

**SURVEY FOR:**  
 SUNCREST HOMES, LLC  
 P.O. BOX 1313  
 TALENT, OR 97540

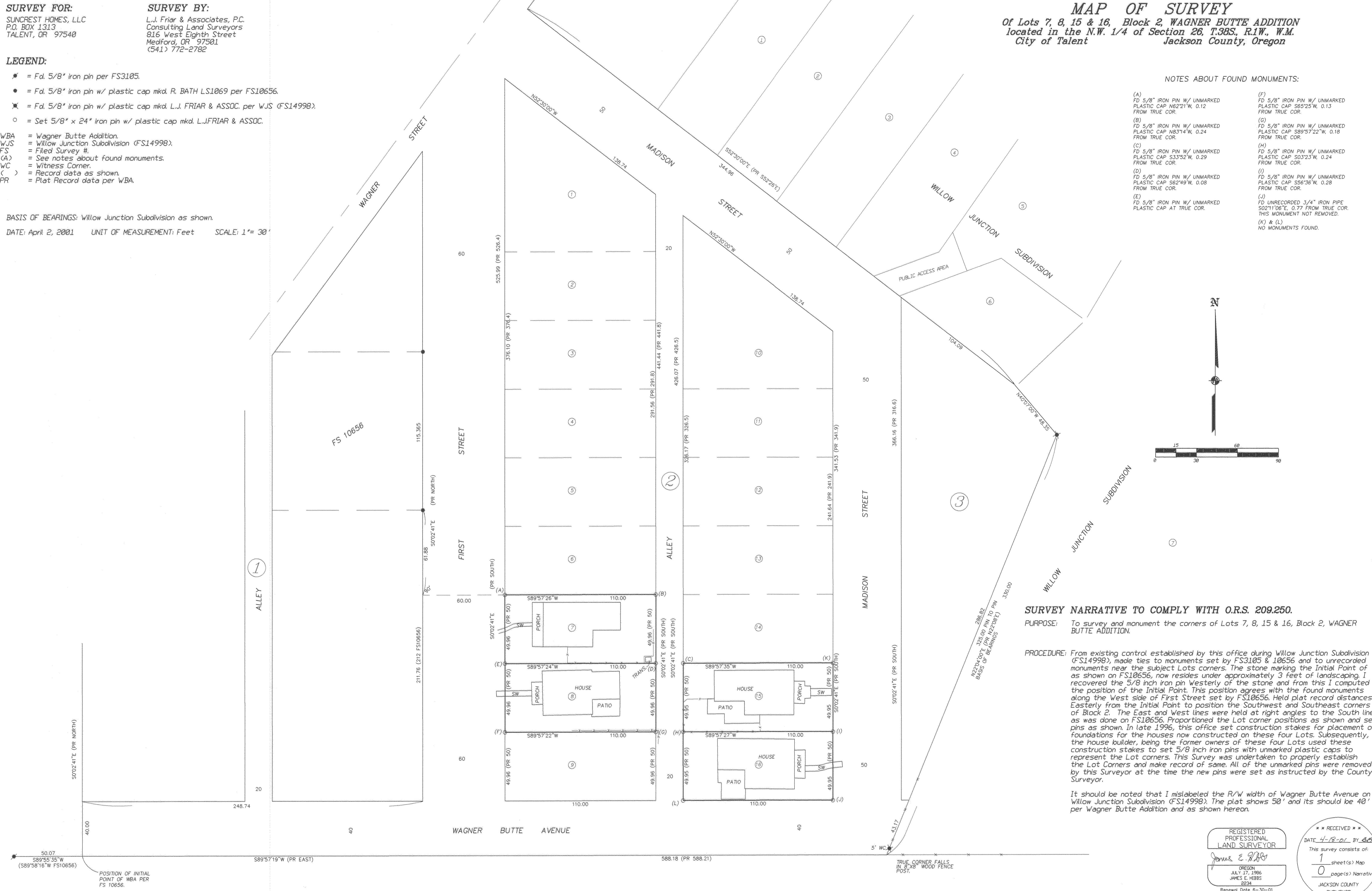
**SURVEY BY:**  
 L.J. Friar & Associates, P.C.  
 Consulting Land Surveyors  
 816 West Eighth Street  
 Medford, OR 97501  
 (541) 772-2782

**MAP OF SURVEY**  
 Of Lots 7, 8, 15 & 16, Block 2, WAGNER BUTTE ADDITION  
 located in the N.W. 1/4 of Section 26, T.38S, R.1W., W.M.  
 City of Talent Jackson County, Oregon

- LEGEND:**
- ✱ = Fd. 5/8" iron pin per FS3105.
  - = Fd. 5/8" iron pin w/ plastic cap mkd. R. BATH LS1069 per FS10656.
  - ✱ = Fd. 5/8" iron pin w/ plastic cap mkd. L.J. FRIAR & ASSOC. per WJS (FS14998).
  - = Set 5/8" x 24" iron pin w/ plastic cap mkd. L.J.FRIAR & ASSOC.
- WBA = Wagner Butte Addition.  
 WJS = Willow Junction Subdivision (FS14998).  
 FS = Filed Survey #.  
 (A) = See notes about found monuments.  
 WC = Witness Corner.  
 ( ) = Record data as shown.  
 PR = Plat Record data per WBA.

BASIS OF BEARINGS: Willow Junction Subdivision as shown.  
 DATE: April 2, 2001 UNIT OF MEASUREMENT: Feet SCALE: 1" = 30'

- NOTES ABOUT FOUND MONUMENTS:**
- |  |  |
|--|--|
| (A) FD 5/8" IRON PIN W/ UNMARKED PLASTIC CAP N62°21'W, 0.12 FROM TRUE COR. | (F) FD 5/8" IRON PIN W/ UNMARKED PLASTIC CAP S65°25'W, 0.13 FROM TRUE COR.                   |
| (B) FD 5/8" IRON PIN W/ UNMARKED PLASTIC CAP N83°14'W, 0.24 FROM TRUE COR. | (G) FD 5/8" IRON PIN W/ UNMARKED PLASTIC CAP S89°57'22"W, 0.18 FROM TRUE COR.                |
| (C) FD 5/8" IRON PIN W/ UNMARKED PLASTIC CAP S33°52'W, 0.29 FROM TRUE COR. | (H) FD 5/8" IRON PIN W/ UNMARKED PLASTIC CAP S03°23'W, 0.24 FROM TRUE COR.                   |
| (D) FD 5/8" IRON PIN W/ UNMARKED PLASTIC CAP S82°49'W, 0.08 FROM TRUE COR. | (I) FD 5/8" IRON PIN W/ UNMARKED PLASTIC CAP S56°38'W, 0.28 FROM TRUE COR.                   |
| (E) FD 5/8" IRON PIN W/ UNMARKED PLASTIC CAP AT TRUE COR.                  | (J) FD UNRECORDED 3/4" IRON PIPE S02°11'06"E, 0.77 FROM TRUE COR. THIS MONUMENT NOT REMOVED. |
|  | (K) & (L) NO MONUMENTS FOUND.  |



**SURVEY NARRATIVE TO COMPLY WITH O.R.S. 209.250.**

**PURPOSE:** To survey and monument the corners of Lots 7, 8, 15 & 16, Block 2, WAGNER BUTTE ADDITION.

**PROCEDURE:** From existing control established by this office during Willow Junction Subdivision (FS14998), made ties to monuments set by FS3105 & 10656 and to unrecorded monuments near the subject Lots corners. The stone marking the Initial Point of as shown on FS10656, now resides under approximately 3 feet of landscaping. I recovered the 5/8 inch iron pin Westery of the stone and from this I computed the position of the Initial Point. This position agrees with the found monuments along the West side of First Street set by FS10656. Held plat record distances Easterly from the Initial Point to position the Southwest and Southeast corners of Block 2. The East and West lines were held at right angles to the South line as was done on FS10656. Proportioned the Lot corner positions as shown and set pins as shown. In late 1996, this office set construction stakes for placement of foundations for the houses now constructed on these four Lots. Subsequently, the house builder, being the former owners of these four Lots used these construction stakes to set 5/8 inch iron pins with unmarked plastic caps to represent the Lot corners. This Survey was undertaken to properly establish the Lot Corners and make record of same. All of the unmarked pins were removed by this Surveyor at the time the new pins were set as instructed by the County Surveyor.

It should be noted that I mislabeled the R/W width of Wagner Butte Avenue on Willow Junction Subdivision (FS14998). The plat shows 50' and its should be 40' per Wagner Butte Addition and as shown hereon.

REGISTERED PROFESSIONAL LAND SURVEYOR  
 JAMES E. HEBBS  
 JULY 17, 1986  
 JAMES E. HEBBS  
 2234  
 Renewal Date 6-30-01

RECEIVED  
 DATE 4-18-01 BY JCH  
 This survey consists of:  
 1 sheet(s) Map  
 0 page(s) Narrative  
 JACKSON COUNTY SURVEYOR