

MAP OF SURVEY

LOCATED IN THE SW 1/4 OF SECTION 3
TOWNSHIP 36 SOUTH, RANGE 1 WEST,
WILLAMETTE MERIDIAN, JACKSON COUNTY

HARNISH WAYSIDE

LISCAD Plus Report: Least Squares Adjustment Report - Network
Variance Factor: 1.12

Pt ID	East	95% Confidence Limits		Err. Ellipse		Orientation
		North	East	Major	Minor	
1	1309841.745	91372.460	0.012	0.028	0.004	157°23'34"
2	1309589.599	90787.527	0.021	0.032	0.004	146°23'58"
14	1309772.536	91135.137	0.016	0.029	0.004	152°03'55"
13	1309658.011	90992.722	0.018	0.031	0.004	150°06'35"

LISCAD Plus Report: Least Squares Adjustment Report - Monument Ties
Variance Factor: 1.66

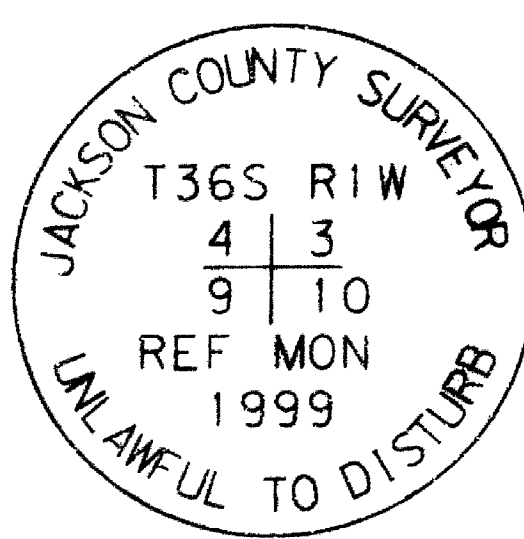
Pt ID	East	95% Confidence Limits		Err. Ellipse		Orientation
		North	East	Major	Minor	
1000	1309642.056	90871.570	0.005	0.010	0.004	7°30'08"
1001	1309654.144	90913.922	0.003	0.010	0.003	2°48'33"
1002	1309667.653	90941.949	0.003	0.010	0.002	169°14'52"
1003	1309794.311	91196.642	0.004	0.010	0.002	19°29'46"
1004	1309839.774	91274.665	0.007	0.010	0.006	25°43'46"
1005	1309861.660	91320.190	0.008	0.010	0.008	25°42'58"
1006	1309827.401	91336.649	0.008	0.010	0.008	15°13'50"
1007	1309758.370	91206.381	0.003	0.010	0.003	168°45'15"
1008	1309739.114	91170.946	0.007	0.008	0.002	136°58'28"
1009	1309722.978	91157.513	0.009	0.005	0.010	114°17'58"
1010	1309700.846	91139.154	0.010	0.003	0.010	93°12'26"
1011	1309708.780	91134.764	0.010	0.002	0.002	89°39'53"
1012	1309717.659	91121.706	0.006	0.010	0.005	24°49'05"
1013	1309624.943	90938.749	0.006	0.009	0.010	31°29'43"
1014	1309610.351	91157.157	0.010	0.006	0.010	97°43'55"

MONUMENT DESCRIPTIONS

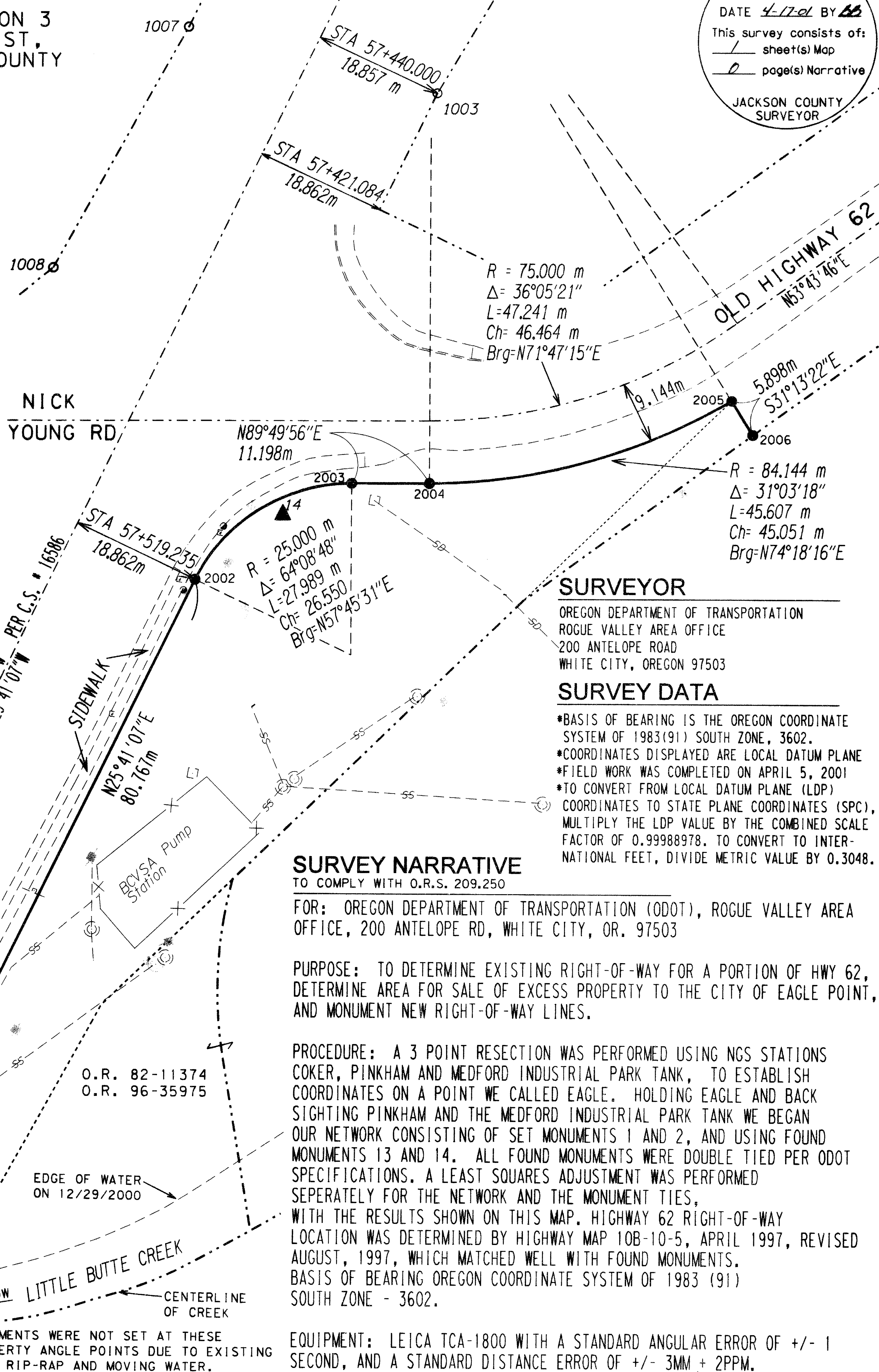
Reference	Description
1	Set Netwk. Pt.
2	Set Mag Nail
13	Set Netwk. Pt.
14	Set Netwk. Pt.
1000	Fd. 3/4" I.R.
1001	Fd. 2" BRASS DISK
1002	Fd. 1/2" BRASS DISK
1003	Fd. I.R. W/ 2" A.C.
1004	Fd. I.R. W/ 2" A.C.
1005	Fd. I.R. W/ 2" A.C.
1006	Fd. I.R. W/ 2" A.C.
1007	Fd. I.R. W/ 2" A.C.
1008	Fd. I.R. W/ 2" A.C.
1009	Fd. I.R. W/ 2" A.C.
1010	Fd. SCREW / WASHER
1011	Fd. I.R. W 2" A.C.
1012	Fd. SCREW / WASHER
1013	Fd. I.R. W/ 2" A.C.
1014	Fd. I.R. W/ 2" A.C.
EAGLE	Fd. 3" BRASS DISK
Pt. ID	NORTHING
2001	1309724.971
2002	1309759.978
2003	1309782.435
2004	1309793.633
2005	1309837.004
2006	1309840.061
	EASTING
2001	91052.455
2002	91125.241
2003	91139.405
2004	91139.438
2005	91151.626
2006	91146.582

CALCULATED POSITION FROM
FOURTH RE-ESTABLISHMENT
JACKSON COUNTY SURVEYOR
JULY 26, 1999

13
1013



T36S, R1W, SW 1/4 SEC 3



RECEIVED
DATE 4/17/01 BY [Signature]
This survey consists of:
1 sheet(s) Map
2 page(s) Narrative
JACKSON COUNTY SURVEYOR

SURVEYOR
OREGON DEPARTMENT OF TRANSPORTATION
ROGUE VALLEY AREA OFFICE
200 ANTELOPE ROAD
WHITE CITY, OREGON 97503

SURVEY DATA
*BASIS OF BEARING IS THE OREGON COORDINATE SYSTEM OF 1983(91) SOUTH ZONE, 3602.
*COORDINATES DISPLAYED ARE LOCAL DATUM PLANE
*FIELD WORK WAS COMPLETED ON APRIL 5, 2001
*TO CONVERT FROM LOCAL DATUM PLANE (LDP) COORDINATES TO STATE PLANE COORDINATES (SPC), MULTIPLY THE LDP VALUE BY THE COMBINED SCALE FACTOR OF 0.99988978. TO CONVERT TO INTERNATIONAL FEET, DIVIDE METRIC VALUE BY 0.3048.

SURVEY NARRATIVE
TO COMPLY WITH O.R.S. 209.250

FOR: OREGON DEPARTMENT OF TRANSPORTATION (ODOT), ROGUE VALLEY AREA OFFICE, 200 ANTELOPE RD, WHITE CITY, OR. 97503

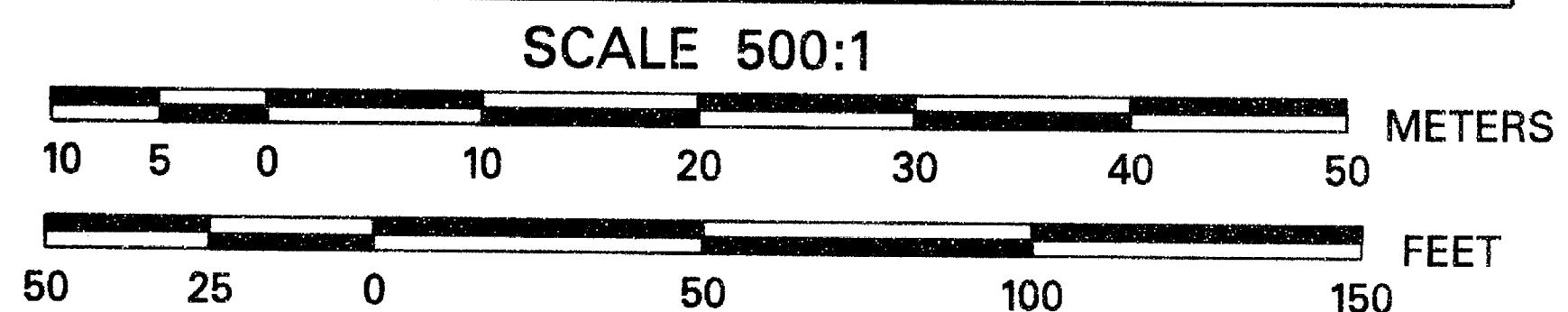
PURPOSE: TO DETERMINE EXISTING RIGHT-OF-WAY FOR A PORTION OF HWY 62, DETERMINE AREA FOR SALE OF EXCESS PROPERTY TO THE CITY OF EAGLE POINT, AND MONUMENT NEW RIGHT-OF-WAY LINES.

PROCEDURE: A 3 POINT RESECTION WAS PERFORMED USING NGS STATIONS COKER, PINKHAM AND MEDFORD INDUSTRIAL PARK TANK, TO ESTABLISH COORDINATES ON A POINT WE CALLED EAGLE. HOLDING EAGLE AND BACK SIGHTING PINKHAM AND THE MEDFORD INDUSTRIAL PARK TANK WE BEGAN OUR NETWORK CONSISTING OF SET MONUMENTS 1 AND 2, AND USING FOUND MONUMENTS 13 AND 14. ALL FOUND MONUMENTS WERE DOUBLE TIED PER ODOT SPECIFICATIONS, A LEAST SQUARES ADJUSTMENT WAS PERFORMED SEPERATELY FOR THE NETWORK AND THE MONUMENT TIES, WITH THE RESULTS SHOWN ON THIS MAP. HIGHWAY 62 RIGHT-OF-WAY LOCATION WAS DETERMINED BY HIGHWAY MAP 10B-10-5, APRIL 1997, REVISED AUGUST, 1997, WHICH MATCHED WELL WITH FOUND MONUMENTS. BASIS OF BEARING OREGON COORDINATE SYSTEM OF 1983 (91) SOUTH ZONE - 3602.

EQUIPMENT: LEICA TCA-1800 WITH A STANDARD ANGULAR ERROR OF +/- 1 SECOND, AND A STANDARD DISTANCE ERROR OF +/- 3MM + 2PPM.

LEGEND

- FND 2" A.C. STAMPED "OTAK INC." PER C.S.#16586 UNLESS OTHERWISE NOTED.
- ▲ SET 16mm X 0.762 m REBAR W/A.C. STAMPED "ODOT HORIZ CONTROL"
- SET 16mm X 0.762 m REBAR W/A.C. STAMPED OREGON DEPT OF TRANSP RIGHT OF WAY
- C.S. FILED SURVEY AT JACKSON COUNTY SURVEYOR'S OFFICE
- R/W ODOT HWY MAP 10B-10-5 DATED APRIL 97. REVISED AUGUST, 1997
- IR IRON ROD
- A.C. ALUMINUM CAP
- RADIAL LINES
- POWER POLE
- SAN. SEWER MANHOLE (BCVSA)
- SD STORM DRAIN PIPE
- SS SAN. SEWER PIPE
- NEW RIGHT OF WAY LINE
- EXISTING PROPERTY LINE
- PREVIOUS RIGHT OF WAY LINE
- CENTERLINE
- TRAFFIC SIGNAL CONTROL BOX
- STEEL POLE W/SIGNAL ARM
- GUY WIRE ANCHOR
- SIGN



OREGON DEPARTMENT OF TRANSPORTATION

HORIZONTAL CONTROL, RECOVERY, AND RETRACEMENT MAP

REGISTERED PROFESSIONAL LAND SURVEYOR
[Signature]
JULY 13, 1999
JOHN R. PARIANI
#5382LS
RENEWS: DEC. 31, 2002

HIGHWAY 62 AT NICK YOUNG RD. EAGLE POINT, OREGON

DATE: APRIL 11, 2001
CADD File: HARNISH-MRM.DGN
1 of 1

