

MAP OF SURVEY

In the S.W. & S.E. 1/4 of Sec. 10, the N.W. & N.E. 1/4 of Sec. 15 & the N.W. 1/4 of Sec. 14, T.36S, R.1W, W.M. Jackson County, Oregon

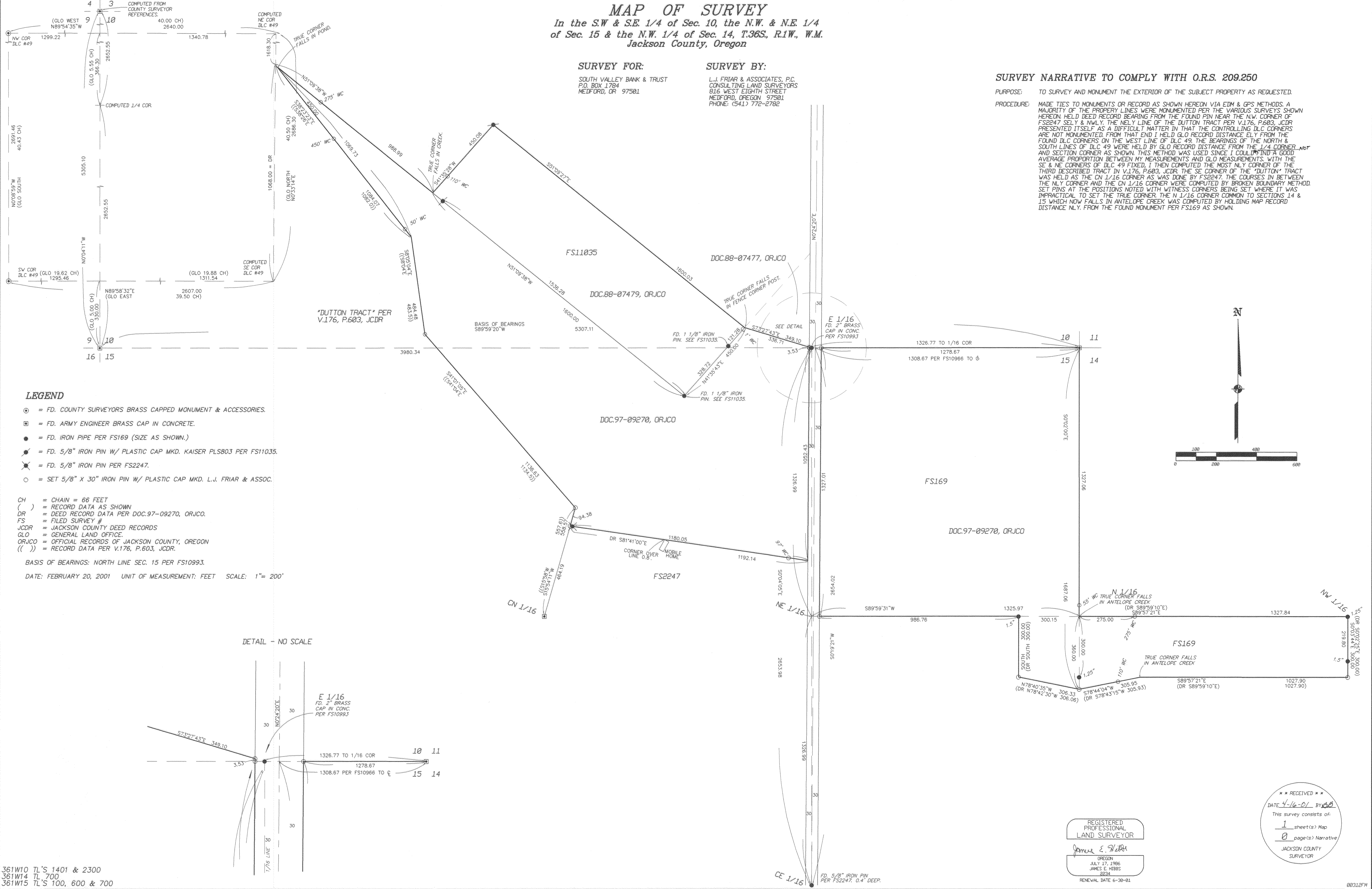
SURVEY FOR:
SOUTH VALLEY BANK & TRUST
P.O. BOX 1784
MEDFORD, OR 97501

SURVEY BY:
L.J. FRIAR & ASSOCIATES, P.C.
CONSULTING LAND SURVEYORS
816 WEST EIGHTH STREET
MEDFORD, OREGON 97501
PHONE: (541) 772-2782

SURVEY NARRATIVE TO COMPLY WITH O.R.S. 209.250

PURPOSE: TO SURVEY AND MONUMENT THE EXTERIOR OF THE SUBJECT PROPERTY AS REQUESTED.

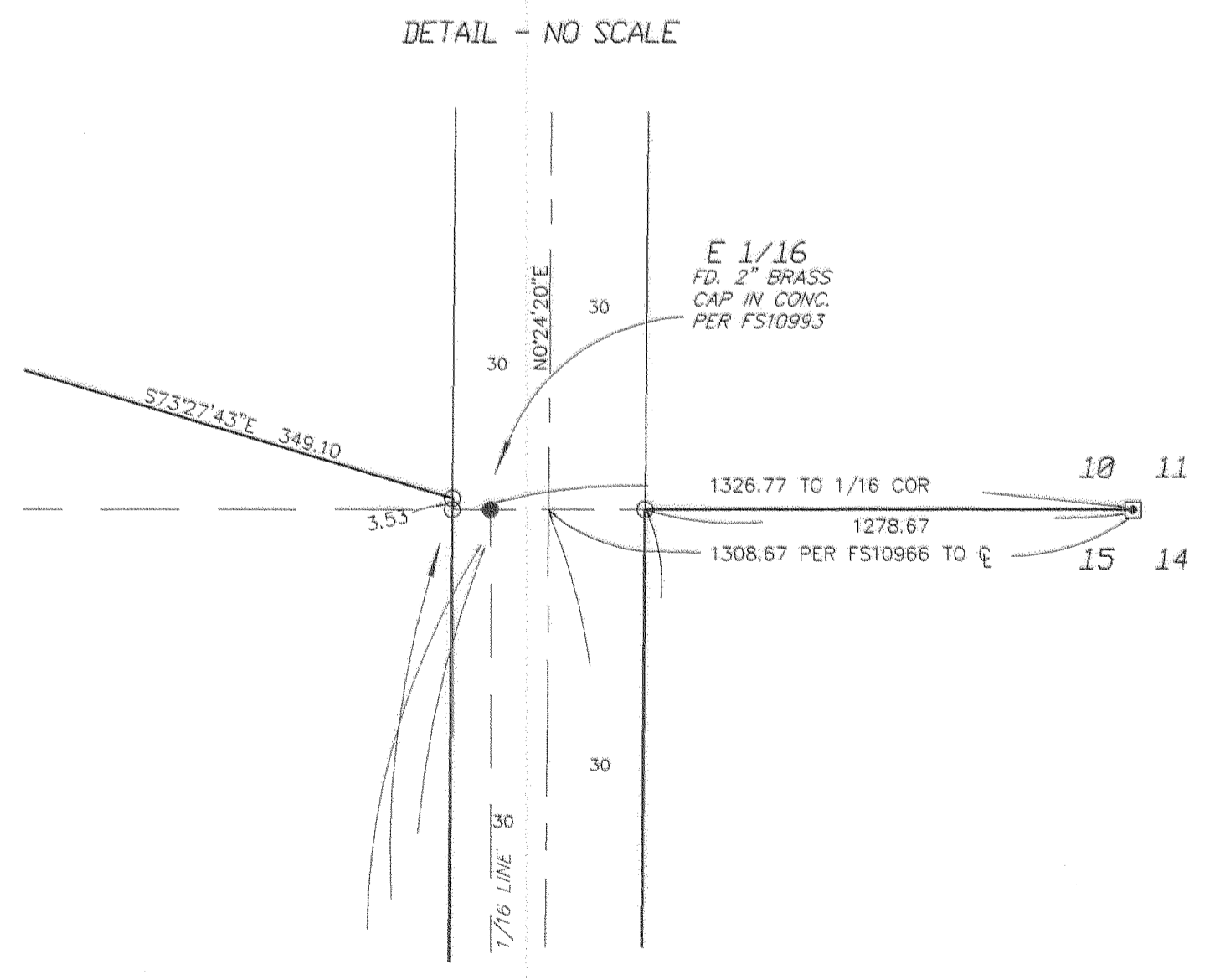
PROCEDURE: MADE TIES TO MONUMENTS OR RECORD AS SHOWN HEREON VIA EDM & GPS METHODS. A MAJORITY OF THE PROPERTY LINES WERE MONUMENTED PER THE VARIOUS SURVEYS SHOWN HEREON. HELD DEED RECORD BEARINGS FROM THE FOUND PIN NEAR THE NW CORNER OF FS2247 SELY & NWLY; THE NELY LINE OF THE DUTTON TRACT PER V.176, P.603, JCDR PRESENTED ITSELF AS A DIFFICULT MATTER IN THAT THE CONTROLLING DLC CORNERS ARE NOT MONUMENTED. FROM THAT END I HELD GLO RECORD DISTANCE ELY FROM THE FOUND DLC CORNERS ON THE WEST LINE OF DLC 49. THE BEARINGS OF THE NORTH & SOUTH LINES OF DLC 49 WERE HELD BY GLO RECORD DISTANCE FROM THE 1/4 CORNER AND SECTION CORNER AS SHOWN. THIS METHOD WAS USED SINCE I COULD FIND A GOOD AVERAGE PROPORTION BETWEEN MY MEASUREMENTS AND GLO MEASUREMENTS. WITH THE SE & NE CORNERS OF DLC 49 FIXED, I THEN COMPUTED THE MOST NLY CORNER OF THE THIRD DESCRIBED TRACT IN V.176, P.603, JCDR. THE SE CORNER OF THE "DUTTON" TRACT WAS HELD AS THE CN 1/16 CORNER AS WAS DONE BY FS2247. THE COURSES IN BETWEEN THE NLY CORNER AND THE CN 1/16 CORNER WERE COMPUTED BY BROKEN BOUNDARY METHOD. SET PINS AT THE POSITIONS NOTED WITH WITNESS CORNERS BEING SET WHERE IT WAS IMPRACTICAL TO SET THE TRUE CORNER. THE N 1/16 CORNER COMMON TO SECTIONS 14 & 15 WHICH NOW FALLS IN ANTELOPE CREEK WAS COMPUTED BY HOLDING MAP RECORD DISTANCE NLY. FROM THE FOUND MONUMENT PER FS169 AS SHOWN.



- LEGEND**
- ⊙ = FD. COUNTY SURVEYORS BRASS CAPPED MONUMENT & ACCESSORIES.
 - ⊠ = FD. ARMY ENGINEER BRASS CAP IN CONCRETE.
 - = FD. IRON PIPE PER FS169 (SIZE AS SHOWN.)
 - ⊙ = FD. 5/8" IRON PIN W/ PLASTIC CAP MKD. KAISER PLS803 PER FS11035.
 - ⊙ = FD. 5/8" IRON PIN PER FS2247.
 - = SET 5/8" X 30" IRON PIN W/ PLASTIC CAP MKD. L.J. FRIAR & ASSOC.

CH = CHAIN = 66 FEET
() = RECORD DATA AS SHOWN
DR = DEED RECORD DATA PER DOC.97-09270, ORJCO.
FS = FILED SURVEY #
JCDR = JACKSON COUNTY DEED RECORDS
GLO = GENERAL LAND OFFICE.
ORJCO = OFFICIAL RECORDS OF JACKSON COUNTY, OREGON
() = RECORD DATA PER V.176, P.603, JCDR.

BASIS OF BEARINGS: NORTH LINE SEC. 15 PER FS10993.
DATE: FEBRUARY 20, 2001 UNIT OF MEASUREMENT: FEET SCALE: 1"= 200'



REGISTERED PROFESSIONAL LAND SURVEYOR
James E. Friar
OREGON JULY 17, 1988
JAMES E. FRIAR 2234
RENEWAL DATE 6-30-01

RECEIVED
DATE 4-16-01 BY [Signature]
This survey consists of:
1 sheet(s) Map
0 page(s) Narrative
JACKSON COUNTY SURVEYOR

361W10 TL'S 1401 & 2300
361W14 TL 700
361W15 TL'S 100, 600 & 700