

I CERTIFY THAT THIS SURVEY WAS PREPARED WITH ARCHIVAL QUALITY MATERIALS AS REQUIRED BY ORS 209.250. SPECIFIC PRODUCTS USED ARE HEWLETT PACKARD INK #51640A ON CONTINENTAL MYLAR #JPC-4M2.

RICHARD F. ALSPACH, PLS 2653

PT."A"
FD 2 1/2" BRASS DISK W/DRILL HOLE
IN STREET MONUMENT CASE
MARKED LS 2271
REF: SET FS 16677

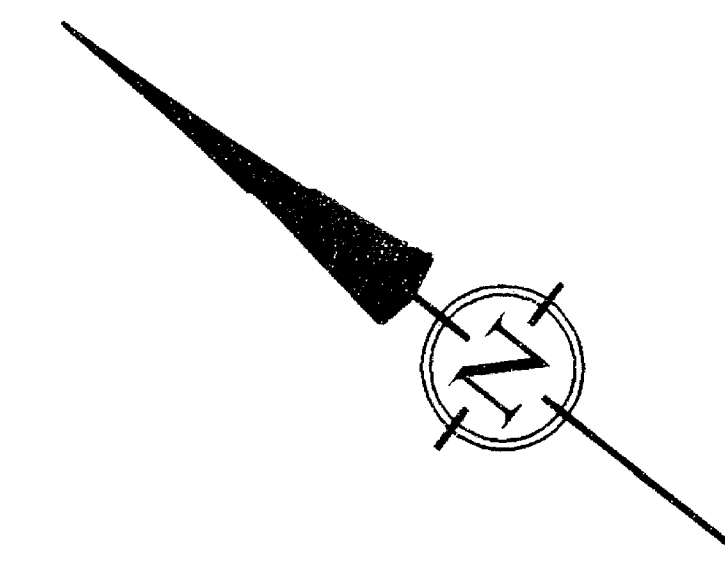
PT."B"
FD 5/8" IRON PIN
NO CAP, 0.5' DEEP
REF: SET FS 3547

MAP OF SURVEY

CENTRAL POINT ELEMENTARY SCHOOL

FOR
JACKSON COUNTY
SCHOOL DISTRICT NO. 6
CENTRAL POINT, OREGON 97502

LOCATED IN
NW 1/4 SECTION 11, TOWNSHIP 37 SOUTH,
RANGE 2 WEST, WILLAMETTE MERIDIAN,
CITY OF CENTRAL POINT, JACKSON COUNTY, OREGON

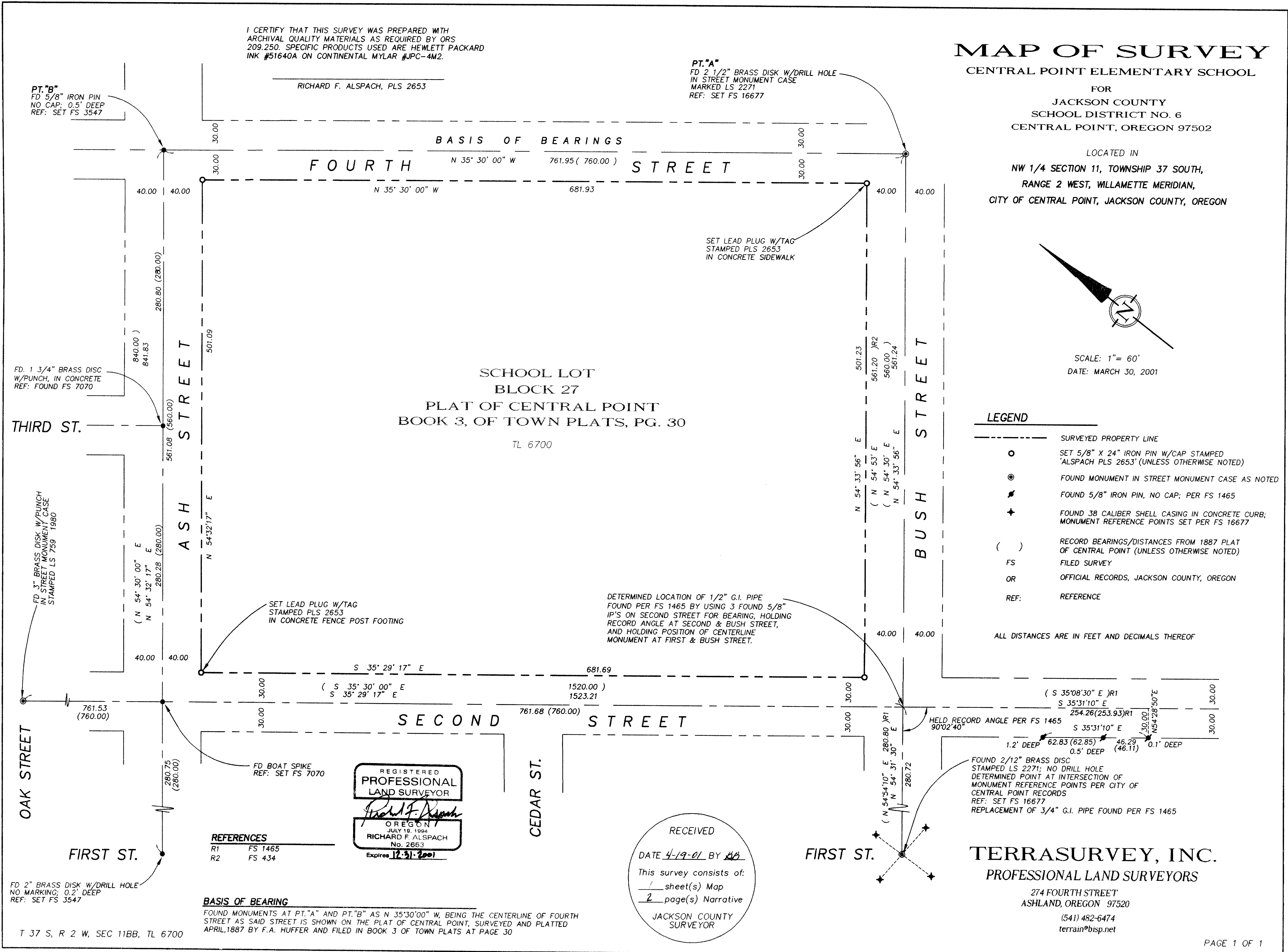


SCALE: 1" = 60'
DATE: MARCH 30, 2001

LEGEND

- SURVEYED PROPERTY LINE
- SET 5/8" X 24" IRON PIN W/CAP STAMPED 'ALSPACH PLS 2653' (UNLESS OTHERWISE NOTED)
- ⊙ FOUND MONUMENT IN STREET MONUMENT CASE AS NOTED
- ⚡ FOUND 5/8" IRON PIN, NO CAP; PER FS 1465
- ⊕ FOUND 3/8 CALIBER SHELL CASING IN CONCRETE CURB; MONUMENT REFERENCE POINTS SET PER FS 16677
- () RECORD BEARINGS/DISTANCES FROM 1887 PLAT OF CENTRAL POINT (UNLESS OTHERWISE NOTED)
- FS FILED SURVEY
- OR OFFICIAL RECORDS, JACKSON COUNTY, OREGON
- REF: REFERENCE

ALL DISTANCES ARE IN FEET AND DECIMALS THEREOF



TERRASURVEY, INC.

PROFESSIONAL LAND SURVEYORS

274 FOURTH STREET
ASHLAND, OREGON 97520

(541) 482-6474
terrain@bisp.net

PROCEDURE:

The school property, Block 27 of the Plat of Central Point, is bounded by Ash Street on the north with a record right of way width of 80', by Fourth Street on the east with a record right of way width of 60', by Bush Street on the south with a record right of way width of 80', and by Second Street on the west with a record right of way width of 60'. This survey proceeded to locate the centerline of these streets and establish sidelines at the respective record widths.

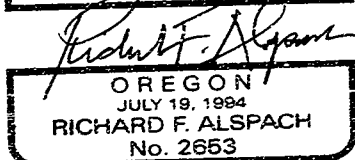
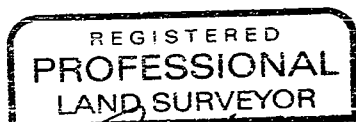
The centerline of Fourth Street was defined by found centerline monuments at the intersection of Fourth Street & Ash Street and the intersection of Fourth Street and Bush Street. The centerline of Bush Street was defined by said found monument at Fourth & Bush and by calculating the position of a 1/2" galvanized iron pipe centerline monument found by FS 1465 at the intersection of Bush Street & Second Street using data from FS 1465.

Said iron pipe centerline monument was found and utilized by Leland Lovejoy, LS in 1952 as a controlling street centerline monument for FS 434 and later used by Lovejoy in 1960 as a controlling monument for FS 1465. This survey searched for but did not find said monument. However property corner monuments shown on FS 1465 were found as was a replacement of the 3/4" iron pipe centerline monument shown on FS 1465 at the intersection of Bush Street and First Street.

Found monuments from FS 1465 did not match well with the published locations, most being out of position by 0.2' to 0.3'. Nonetheless three property corner monuments along the sideline of Second Street did match well for alignment. The alignment of these three sideline monuments was held for the bearing of Second Street and the centerline of Second Street was established at this location parallel with and 30' distant from the sideline monuments. The position of the destroyed 1/2" iron pipe centerline monument was determined by intersecting the centerline of Second Street thus established with the centerline of Bush Street using a bearing from the found centerline monument at Bush Street & First Street which maintains the record centerline intersection angle as shown on FS 1465. An angle point in Second Street exists at this intersection.

The centerline of Second Street bordering Block 27 was defined using the calculated position just mentioned and the found centerline monument at the centerline intersection of Second Street with Oak Street. The centerline of Ash Street was defined using the found centerline monument at Fourth & Ash Street and the found centerline monument at Ash & First Street. The Centerline intersection of Ash Street and Second Street thus defined is occupied by a boat spike set per FS 7070.

Having defined Block 27 sidelines were established at record right of way dimensions and property corner monuments set.

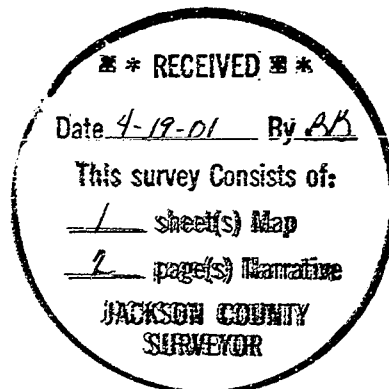


Expires 12-31-2001

April 19, 2001

Richard F. Alspach

Richard F. Alspach, PLS
TerraSurvey, Inc.
274 Fourth Street
Ashland, OR 97520



Survey Number 16879

SURVEY NARRATIVE
TO COMPLY WITH PARAGRAPH 209.250, OREGON REVISED STATUTES

DATE OF SURVEY:

March 30, 2001

SURVEYED BY:

TerraSurvey, Inc.
274 Fourth Street
Ashland, OR 97520

SURVEY FOR:

Jackson County School District No. 6, Central Point, Oregon

LOCATION:

NW 1/4 of Section 11, Township 37 South, Range 2 West, Willamette Meridian, city of Central Point, Jackson County, Oregon

PURPOSE:

To survey and monument exterior boundary property corners of the Central Point Elementary School property being School Lot, Block 27 of the Plat of Central Point, filed in Book 3 of Town Plats at Page 30

BASIS OF BEARINGS:

Found centerline monuments at the intersection of Fourth Street & Ash Street and Fourth Street & Bush Street as N 35° 30' 00" W being the centerline of Fourth Street as shown on the Plat of Central Point, Surveyed and Platted April, 1887 by F.A. Huffer and filed in Book 3 of Town Plats, at page 30

