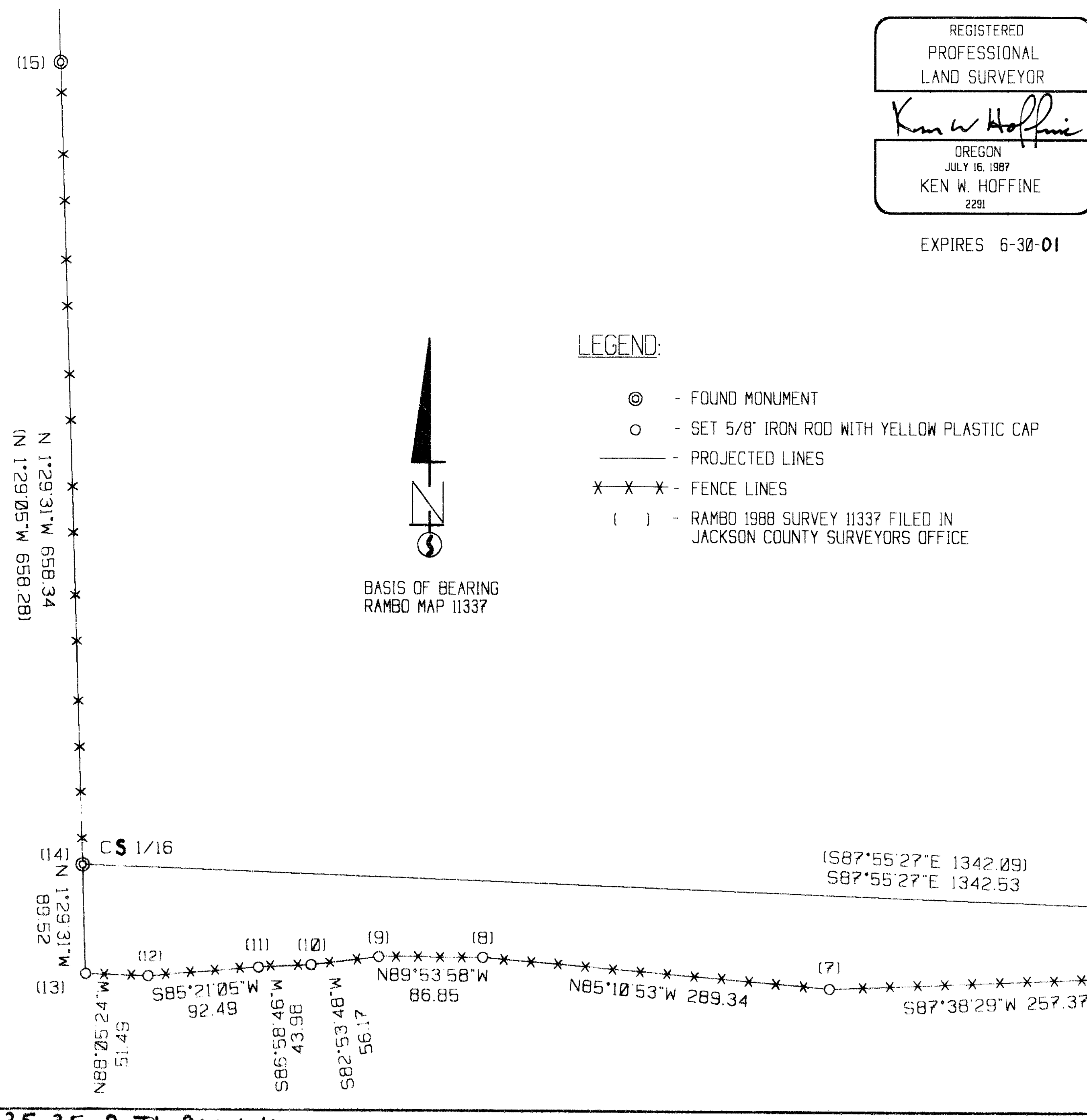


LONE ROCK TIMBER CO.

PO BOX 1127 ROSEBURG OREGON 97470 DATE: FEB. 2001
 SECTION 8, TOWNSHIP 35 SOUTH, RANGE 2 EAST, W.M. JACKSON COUNTY, ORE.
 COAST RANGE RESOURCE TRACT: M-35-2E-8 SCALE: 1" = 100'

NARRATIVE:

THIS SURVEY WAS CONDUCTED TO ESTABLISH PROPERTY CORNERS AND PROPERTY LINES FOR TIMBER CUTTING PURPOSES. NUMEROUS MEANDERING FENCE LINES WERE ESTABLISHED IN THIS AREA APPROXIMATELY 40 YEARS AGO FOR CATTLE CONTAINMENT BETWEEN NEARBY MEADOWS AND TIMBER GROWING PROPERTY. PROPERTY OWNER, DR. LOWELL NICOLAS, HAS REBUILT AND MAINTAINED OLD MEANDERING FENCE LINES SOUTH OF HIS DEEDED S1/2 NW1/4 SE1/4 OF SECTION 8 WHERE IT HAS BENEFITED HIM. FENCE LINES ON THE EAST AND WEST LINES ON THIS PROPERTY HAVE BEEN BUILT AND MAINTAINED CLOSE TO DEED LINE. NICOLAS HAS CLAIMED ADVERSE POSSESSION ON NUMEROUS CORRESPONDENCE WITH THE PREVIOUS OWNER (MEDCO) FOR OVER 10 YEARS TO THIS FENCE LINE. THIS FENCE LINE HAS BEEN MOVING FURTHER SOUTH IN RECENT TIME. THEREFORE TO MONUMENT THE OLD FENCE LINE LOCATION AND TO RESOLVE THIS PROPERTY LINE ISSUE, COAST RANGE RESOURCES AND NICOLAS HAVE SIGNED A BOUNDARY LINE AGREEMENT FILED WITH JACKSON COUNTY CLERK'S OFFICE 01/06/01. WE SET IRON RODS IN THE FENCE LINE AT MAJOR BREAKS IN DIRECTION OF THE FENCE LINE. USING RAMBO'S MAP 11337 AND CORNERS FOUND AS SHOWN HEREON FOR CONTROL, WE RAN A RANDOM TRAVERSE BETWEEN RAMBO'S CORNERS TIEING IN OUR FENCE LINE IRON RODS. I WAS ASSISTED WITH THIS SURVEY BY GARY ANGIOLET, MARK DVORSCAK AND IGNACIO ROMAS USING A NIKON DTM 450 TOTAL STATION.



REGISTERED PROFESSIONAL LAND SURVEYOR
Ken W. Hoffine
 OREGON JULY 16, 1987
 KEN W. HOFFINE 2291
 EXPIRES 6-30-01

- 1/16
- 1) THE SOUTHEAST CORNER OF SECTION 8
 FOUND 5/8" IRON ROD WITH ALUMINUM CAP
 -- 8" OAK BEARS S69°E, 9.2 FEET (RECORD S68 1/2°E, 9.5 FEET) SOME SCRIBING VISIBLE
 -- 8" OAK BEARS N11°E, 8.2 FEET (RECORD N11°E, 8.2 FEET) HEALED FACE
 CORNER LIES 0.9 FEET EAST OF NORTH-SOUTH FENCE LINE ON FLAT ROCKY GROUND.
 - 2) PROPERTY CORNER
 SET 5/8" X 32" IRON ROD WITH YELLOW PLASTIC CAP MARKED LONE ROCK TIMBER PLS 2291.
 -- 11" DOUGLAS FIR BEARS S25°E, 15.2 FEET, WE SCRIBE B.T. AND TAG TREE
 CORNER LIES ON FLAT ROCKY GROUND IN EAST-WEST FENCE LINE 5.9 FEET WEST OF FENCE CORNER, IN MOUND OF STONES.
 - 3) PROPERTY CORNER
 SET 5/8" X 40" IRON ROD WITH YELLOW PLASTIC CAP MARKED LONE ROCK TIMBER PLS 2291.
 -- 13" DOUGLAS FIR BEARS S12 1/2°W, 9.4 FEET, WE SCRIBE B.T. AND TAG TREE
 CORNER LIES ON FLAT ROCKY GROUND IN EAST-WEST FENCE LINE IN MOUND OF STONE.
 - 4) PROPERTY CORNER
 SET 5/8" X 40" IRON ROD WITH YELLOW PLASTIC CAP MARKED LONE ROCK TIMBER PLS 2291.
 -- 14" DOUGLAS FIR BEARS S36 1/2°W, 23.8 FEET, WE SCRIBE B.T. AND TAG TREE
 CORNER LIES ON WEST SLOPE IN FENCE LINE.
 - 5) PROPERTY CORNER
 SET 5/8" X 40" IRON ROD WITH YELLOW PLASTIC CAP MARKED LONE ROCK TIMBER PLS 2291.
 -- 16" DOUGLAS FIR BEARS N75 1/2°W, 7.8 FEET, WE SCRIBE B.T. AND TAG TREE
 CORNER LIES ON WEST FACING ROCKY SLOPE.
 - 6) PROPERTY CORNER
 SET 5/8" X 40" IRON ROD WITH YELLOW PLASTIC CAP MARKED LONE ROCK TIMBER PLS 2291.
 -- 12" DOUGLAS FIR BEARS N5°W, 3.8 FEET, WE SCRIBE B.T. AND TAG TREE
 CORNER LIES APPROXIMATELY 30 FEET WEST OF BIG ROCK OUTCROPPING IN FENCE LINE
 - 7) PROPERTY CORNER
 SET 5/8" X 40" IRON ROD WITH YELLOW PLASTIC CAP MARKED LONE ROCK TIMBER PLS 2291.
 -- 6" DOUGLAS FIR BEARS N32 1/2°W, 3.2 FEET, WE SCRIBE B.T. AND TAG TREE
 CORNER LIES IN FENCE LINE APPROXIMATELY 20 FEET EAST OF DRAW.
 - 8) PROPERTY CORNER
 SET 5/8" X 40" IRON ROD WITH YELLOW PLASTIC CAP MARKED LONE ROCK TIMBER PLS 2291.
 -- 26" DOUGLAS FIR BEARS N82 1/2°W, 10.2 FEET, WE SCRIBE B.T. AND TAG TREE
 CORNER LIES IN DOWN FENCE LINE ON NORTHEAST SLOPE.
 - 9) PROPERTY CORNER
 SET 5/8" X 32" IRON ROD WITH YELLOW PLASTIC CAP MARKED LONE ROCK TIMBER PLS 2291.
 -- 14" DOUGLAS FIR BEARS S46 1/2°W, 22.0 FEET, WE SCRIBE B.T. AND TAG TREE
 CORNER LIES ON RIDGETOP IN MOUND OF STONES IN FENCE LINE.
 - 10) PROPERTY CORNER
 SET 5/8" X 40" IRON ROD WITH YELLOW PLASTIC CAP MARKED LONE ROCK TIMBER PLS 2291.
 -- 11" DOUGLAS FIR BEARS SOUTH 21° FEET, WE SCRIBE B.T. AND TAG TREE
 CORNER LIES ON WEST EDGE OF FLAT RIDGETOP IN MOUND OF STONES IN FENCE LINE.
 - 11) PROPERTY CORNER
 SET 5/8" X 40" IRON ROD WITH YELLOW PLASTIC CAP MARKED LONE ROCK TIMBER PLS 2291.
 -- 12" DOUGLAS FIR BEARS N17°E, 6.0 FEET, WE SCRIBE B.T. AND TAG TREE
 CORNER LIES ON WEST SLOPE IN FENCE LINE.
 - 12) PROPERTY CORNER
 SET 5/8" X 40" IRON ROD WITH YELLOW PLASTIC CAP MARKED LONE ROCK TIMBER PLS 2291.
 -- 25" SUGAR PINE BEARS S3 1/2°E, 9.9 FEET, WE SCRIBE B.T. AND TAG TREE
 CORNER LIES NEAR BOTTOM OF WEST FACING SLOPE IN FENCE LINE.
 - 13) PROPERTY CORNER
 SET 5/8" X 40" IRON ROD WITH YELLOW PLASTIC CAP MARKED LONE ROCK TIMBER PLS 2291.
 -- 22" PONDEROSA PINE BEARS S43°W, 16.3 FEET, WE SCRIBE B.T. AND TAG TREE
 CORNER LIES AT BOTTOM OF WEST FACING SLOPE IN FENCE LINE.
 - 14) THE CENTER-SOUTH 1/16 CORNER OF SECTION 8
 FOUND 5/8" IRON ROD WITH ALUMINUM CAP.
 -- 9" OAK BEARS N39°E, 31.2 FEET (RECORD N37°40'E, 31.2 FEET) HEALED FACE AND TAG
 -- 14" PINE BEARS S20°E, 23.4 FEET (RECORD S19°28'E, 23.3 FEET) HEALED FACE AND TAG
 CORNER LIES 4.5 FEET EAST OF NORTH-SOUTH FENCE LINE, GRASSY OPEN FIELD WEST OF FENCE.
 - 15) THE CENTER-SOUTH -NORTH 1/64 CORNER OF SECTION 8
 FOUND 5/8" IRON ROD WITH ALUMINUM CAP.
 CORNER LIES NEAR NORTH-SOUTH FENCE LINE, GRASSY OPEN FIELD WEST OF FENCE.

RECEIVED
 Date 3/8/01 By BB
 This survey consists of:
 1 sheet(s) Map
 6 page(s) Narrative
 JACKSON COUNTY SURVEYOR

35 2E 8 TL 800+1000