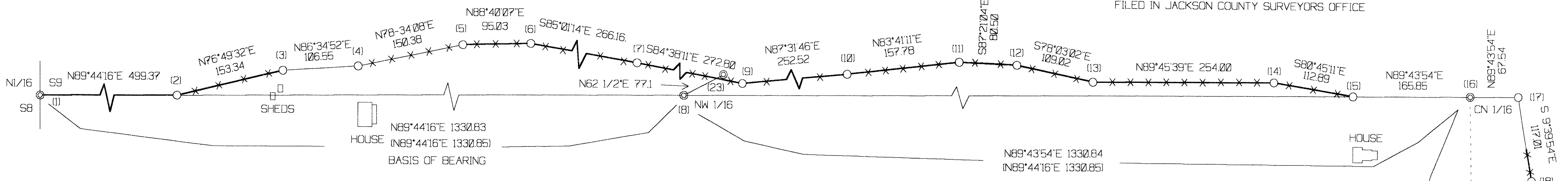


LONE ROCK TIMBER CO.

PO BOX 1127 ROSEBURG OREGON 97470 DATE: MARCH 2001
 SECTION: 9 TOWNSHIP 35 SOUTH RANGE 2 EAST, W.M. JACKSON COUNTY, OREGON
 COAST RANGE RESOURCES TRACT: M-35-2E-9 SCALE 1" = 100'

NARRATIVE:

THIS SURVEY WAS CONDUCTED TO ESTABLISH PROPERTY CORNERS AND PROPERTY LINES FOR TIMBER CUTTING PURPOSES. EXISTING FENCE LINES WERE ESTABLISHED ON PROPERTY LINES ACCORDING TO LOCAL NEIGHBORS FROM AN UNRECORDED SURVEY BY MEDCO NEARLY 50 YEARS AGO. THIS UNRECORDED SURVEY USED FOR CONTROL THE ORIGINAL LOCATION OF THE NORTH 1/4 OF SECTION 9 WHICH HAS BEEN SUBSEQUENTLY LOST AND IS SUBSTANTIALLY DIFFERENT FROM ITS PROPORTIONED POSITION BY RAMBO MAP 8407 ACCORDING TO NEIGHBORS. IN AN EFFORT TO RESOLVE THIS PROPERTY LINE ISSUE, COAST RANGE RESOURCES AND DONALD HENSHAW SIGNED A BOUNDARY LINE AGREEMENT AND FILED IT IN THE JACKSON COUNTY CLERKS OFFICE 01 05239. LONE ROCK SET IRON RODS IN THE EXISTING FENCE LINE AND OTHER AGREEMENT POSITIONS TO MONUMENT THE AGREEMENT PROPERTY LINE BETWEEN THESE TWO OWNERS AS SHOWN HEREON. THIS SURVEY WAS INITIATED AT THE NW 1/16 BETWEEN SECTIONS 8 AND 9 WITH A RANDOM TRAVERSE RUN BETWEEN RAMBO'S 1/16 CORNERS FOUND AS SHOWN AND USED AS CONTROL. I WAS ASSISTED WITH THIS SURVEY BY GARY ANGIOLET AND IGNACIO ROMAN USING A NIKON DTM 450 TOTAL STATION.



- 1) THE NORTH 1/16TH CORNER BETWEEN SECTIONS 8 AND 9
 FOUND 1 1/2" ALUMINUM CAP SET IN RAMBO SURVEY 7839.
 -- 9" OAK BEARS N40 3/4"E, 79.0 FEET (RECORD N40 5/2", 78.5) HEALED DOUBLE BLAZE AND TAG
 -- 18" PINE STUB BEARS N26 1/2"W, 37.5 FEET (RECORD N26 3/1"W, 37.4) SOME VISIBLE SCRIBING
 CORNER LIES ON FLAT BRUSHY GROUND APPROXIMATELY 35 FEET NORTH OF EAST-WEST FENCE LINE.
- 2) PROPERTY CORNER
 SET 5/8" X 3/2" IRON ROD WITH YELLOW PLASTIC CAP MARKED LONE ROCK TIMBER PLS 2291.
 -- 31" OAK BEARS N62 3/4"E, 6.9 FEET, WE SCRIBE B.T. AND TAG TREE
 CORNER LIES ON OLD FENCELINE ON LINE.
- 3) PROPERTY CORNER
 SET 5/8" X 40" IRON ROD WITH YELLOW PLASTIC CAP MARKED LONE ROCK TIMBER PLS 2291.
 -- 12" PINE BEARS N25"W, 5.5 FEET, WE SCRIBE B.T. AND TAG TREE
 CORNER LIES ON NORTHSIDE OF OLD FENCELINE.
- 4) PROPERTY CORNER
 SET 5/8" X 40" IRON ROD WITH YELLOW PLASTIC CAP MARKED LONE ROCK TIMBER PLS 2291.
 -- 7" DOUGLAS FIR BEARS N55 1/2"E, 18.1 FEET, WE SCRIBE B.T. AND TAG TREE
 CORNER LIES ON NORTHSIDE OF OLD FENCELINE.
- 5) PROPERTY CORNER
 SET 5/8" X 40" IRON ROD WITH YELLOW PLASTIC CAP MARKED LONE ROCK TIMBER PLS 2291.
 -- 8" DOUGLAS FIR BEARS N6 1/2"E, 10.4 FEET, WE SCRIBE B.T. AND TAG TREE
 CORNER LIES ON NORTHSIDE OF OLD FENCELINE.
- 6) PROPERTY CORNER
 SET 5/8" X 40" IRON ROD WITH YELLOW PLASTIC CAP MARKED LONE ROCK TIMBER PLS 2291.
 -- 15" DOUGLAS FIR BEARS N70"E, 26.2 FEET, WE SCRIBE B.T. AND TAG TREE
 CORNER LIES ON EAST SIDE OF DRIVEWAY ON NORTHSIDE OF OLD FENCELINE.
- 7) PROPERTY CORNER
 SET 5/8" X 40" IRON ROD WITH YELLOW PLASTIC CAP MARKED LONE ROCK TIMBER PLS 2291.
 -- NORTHWEST 1/16 CORNER BEARS S56"E, 82.3 FEET
 CORNER LIES ON NORTHSIDE OF OLD FENCELINE.
- 8) THE NORTHWEST 1/16 CORNER OF SECTION 9
 FOUND 1 1/2" ALUMINUM CAP SET IN RAMBO SURVEY 8407.
 -- 9" OAK BEARS N18"E, 50.1 FEET (RECORD N18", 49.8 FEET) HEALED FACE AND TAG
 -- 10" OAK BEARS N28 3/4"W, 58.9 FEET (RECORD N28 4/8"W, 58.7 FEET) HEALED FACE AND TAG
 CORNER LIES IN OPEN FLAT GROUND APPROXIMATELY 40.0 FEET SOUTH OF EAST-WEST FENCELINE.
- 9) PROPERTY CORNER
 SET 5/8" X 40" IRON ROD WITH YELLOW PLASTIC CAP MARKED LONE ROCK TIMBER PLS 2291.
 -- 9" PINE BEARS N83 1/4"E, 22.2 FEET, WE SCRIBE B.T. AND TAG TREE
 CORNER LIES ON NORTHSIDE OF OLD FENCELINE AND WEST OF DRAW.
- 10) PROPERTY CORNER
 SET 5/8" X 40" IRON ROD WITH YELLOW PLASTIC CAP MARKED LONE ROCK TIMBER PLS 2291.
 -- 13" CEDAR BEARS N74 1/4"E, 22.8 FEET, WE SCRIBE B.T. AND TAG TREE
 CORNER LIES ON NORTHSIDE OF OLD FENCELINE AND EAST OF DRAW.
- 11) PROPERTY CORNER
 SET 5/8" X 40" IRON ROD WITH YELLOW PLASTIC CAP MARKED LONE ROCK TIMBER PLS 2291.
 -- 5/8" IRON ROD FOR PROPERTY CORNER 12 BEARS S87 1/4"E, 80.5 FEET
 CORNER LIES ON SOUTHSIDE OF OLD FENCELINE.
- 12) PROPERTY CORNER
 SET 5/8" X 40" IRON ROD WITH YELLOW PLASTIC CAP MARKED LONE ROCK TIMBER PLS 2291.
 -- 5/8" IRON ROD FOR PROPERTY CORNER 11 BEARS N87 1/4"W, 80.5 FEET
 CORNER LIES ON NORTHSIDE OF OLD FENCELINE.

- 13) PROPERTY CORNER
 SET 5/8" X 40" IRON ROD WITH YELLOW PLASTIC CAP MARKED LONE ROCK TIMBER PLS 2291.
 -- 9" DOUGLAS FIR BEARS N6 3/4"E, 10.9 FEET, WE SCRIBE B.T. AND TAG TREE
 CORNER LIES ON NORTHSIDE OF OLD FENCELINE.
- 14) PROPERTY CORNER
 SET 5/8" X 40" IRON ROD WITH YELLOW PLASTIC CAP MARKED LONE ROCK TIMBER PLS 2291.
 -- 9" CEDAR BEARS N31 3/4"W, 12.0 FEET, WE SCRIBE B.T. AND TAG TREE
 CORNER LIES ON NORTHSIDE OF OLD FENCELINE.
- 15) PROPERTY CORNER
 SET 5/8" X 40" IRON ROD WITH YELLOW PLASTIC CAP MARKED LONE ROCK TIMBER PLS 2291.
 -- 19" CEDAR BEARS N61"W, 11.3 FEET, WE SCRIBE B.T. AND TAG TREE
 CORNER LIES IN FENCELINE APPROXIMATELY 60 FEET SOUTH OF OLD AQUADUCT ROAD.
- 16) THE CENTER NORTH 1/16 CORNER FOR SECTION 9
 FOUND 1 1/2" ALUMINUM CAP SET IN RAMBO SURVEY 8407 0.5 FEET BELOW GROUND.
 -- 14" DOUGLAS FIR BEARS N42 1/2"E, 31.8 FEET (RECORD N42 1/2"E, 31.8 FEET) WELL HEALED FACE AND TAG
 -- 18" DOUGLAS FIR BEARS N26"W, 56.1 FEET (RECORD N26 2/10"W, 55.9 FEET) WELL HEALED FACE AND TAG
 CORNER LIES UNDER OLD MEDFORD AQUADUCT ROAD.
- 17) PROPERTY CORNER
 SET 5/8" X 40" IRON ROD WITH YELLOW PLASTIC CAP MARKED LONE ROCK TIMBER PLS 2291.
 -- 14" DOUGLAS FIR BEARS S63 1/4"E, 51.5 FEET, THIS IS THE SAME TREE AS 14" DOUGLAS FIR FROM CN 1/16
 CORNER LIES APPROXIMATELY 28 FEET NORTH OF CENTERLINE OF OLD MEDFORD AQUADUCT ROAD.
- 18) PROPERTY CORNER
 SET 5/8" X 40" IRON ROD WITH YELLOW PLASTIC CAP MARKED LONE ROCK TIMBER PLS 2291.
 -- 11" DOUGLAS FIR BEARS S62 1/4"E, 23.2 FEET, WE SCRIBE B.T. AND TAG TREE
 CORNER LIES ON EAST SIDE OF OLD FENCELINE.
- 19) PROPERTY CORNER
 SET 5/8" X 40" IRON ROD WITH YELLOW PLASTIC CAP MARKED LONE ROCK TIMBER PLS 2291.
 -- 14" CEDAR BEARS N78 1/2"E, 23.4 FEET, WE SCRIBE B.T. AND TAG TREE
 CORNER LIES ON EASTSIDE OF OLD FENCELINE.
- 20) PROPERTY CORNER
 SET 5/8" X 40" IRON ROD WITH YELLOW PLASTIC CAP MARKED LONE ROCK TIMBER PLS 2291.
 -- 5/8" IRON ROD FOR PROPERTY CORNER 21 BEARS WEST 77.0 FEET
 CORNER LIES ON EASTSIDE OF OLD FENCELINE.
- 21) PROPERTY CORNER
 SET 5/8" X 40" IRON ROD WITH YELLOW PLASTIC CAP MARKED LONE ROCK TIMBER PLS 2291.
 -- 8" DOUGLAS FIR BEARS N56 1/4"W, 12.0 FEET, WE SCRIBE B.T. AND TAG TREE
 CORNER LIES ON FLAT GROUND APPROXIMATELY 77 FEET WEST OF OLD FENCELINE IN BLAZED NORTH-SOUTH LINE.
- 22) THE CENTER 1/4 CORNER FOR SECTION 9
 FOUND 1 1/2" ALUMINUM CAP SET IN RAMBO SURVEY 8407.
 -- 15" DOUGLAS FIR BEARS S48"W, 25.5 FEET (RECORD S47 4/6"W, 25.1 FEET) HEALED DOUBLE BLAZES AND TAG
 -- 13" DOUGLAS FIR BEARS S46 1/4"E, 17.2 FEET (RECORD S45 2/8"E, 17.0 FEET) HEALED DOUBLE BLAZES AND TAG
 CORNER LIES ON FLAT GROUND BLAZING RUNNING NORTH AND SOUTH FROM CORNER.
- 23) FOUND FENCE POST SET BY MEDCO IN 1950'S FOR THE NW 1/16 CORNER.

LEGEND:

- ⊙ - FOUND MONUMENT
- - SET 5/8" IRON ROD WITH YELLOW PLASTIC CAP MARKED LONE ROCK TIMBER PLS 2291
- - PROJECTED LINES
- - PROPERTY LINES FLAGGED, BLAZED, AND PAINTED
- * * - EXISTING FENCE LINES
- () - ARTHUR RAMBO 1980 SURVEY 8407 FILED IN JACKSON COUNTY SURVEYORS OFFICE

REGISTERED PROFESSIONAL LAND SURVEYOR
Ken W. Hoffine
 OREGON JULY 16, 1987
 KEN W. HOFFINE 2291
 EXPIRES 6-30-01

N
 BASIS OF BEARING FROM 1980 RAMBO SURVEY 8407

**** RECEIVED ****
 Date 3/8/01 By *CS*
 This survey consists of:
 / sheet(s) Map
 0 page(s) Narrative
 JACKSON COUNTY SURVEYOR

