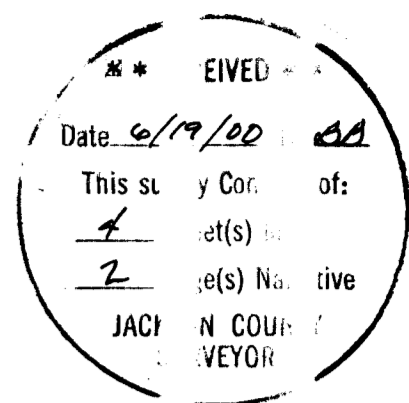
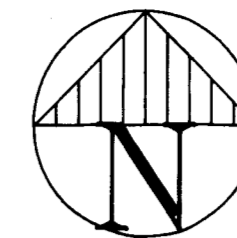


Sheet 4 of 4

Sheet 2 of 4



Official 1888 City Plat
Accepted and Adopted
by the
City Council of the
City of Ashland, Oregon.

Fd. iron bar on West R/W North Main Street
at the N.E. cor. Perrine's Bld'g
formerly the J.M. McCall brick store bld'g. Reference
Vol. 13, Pg. 378 & Vol. 19, Pg. 570
D.R. J.C.O.
This monument was tied by Swain Surveying on
May 24, 1973.
NOT RE-VISITED THIS SURVEY

SURVEYOR

CITY of ASHLAND
Engineering Division
City Hall
Ashland, Oregon 97520
SCALE: 1" = 20'
BASIS OF BEARING:

JUNE 9, 2000
Everett L. Swain, P.L.S.
Assistant City Surveyor

REVISION: 12/07/2000

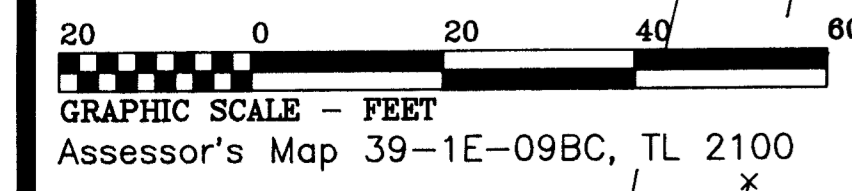
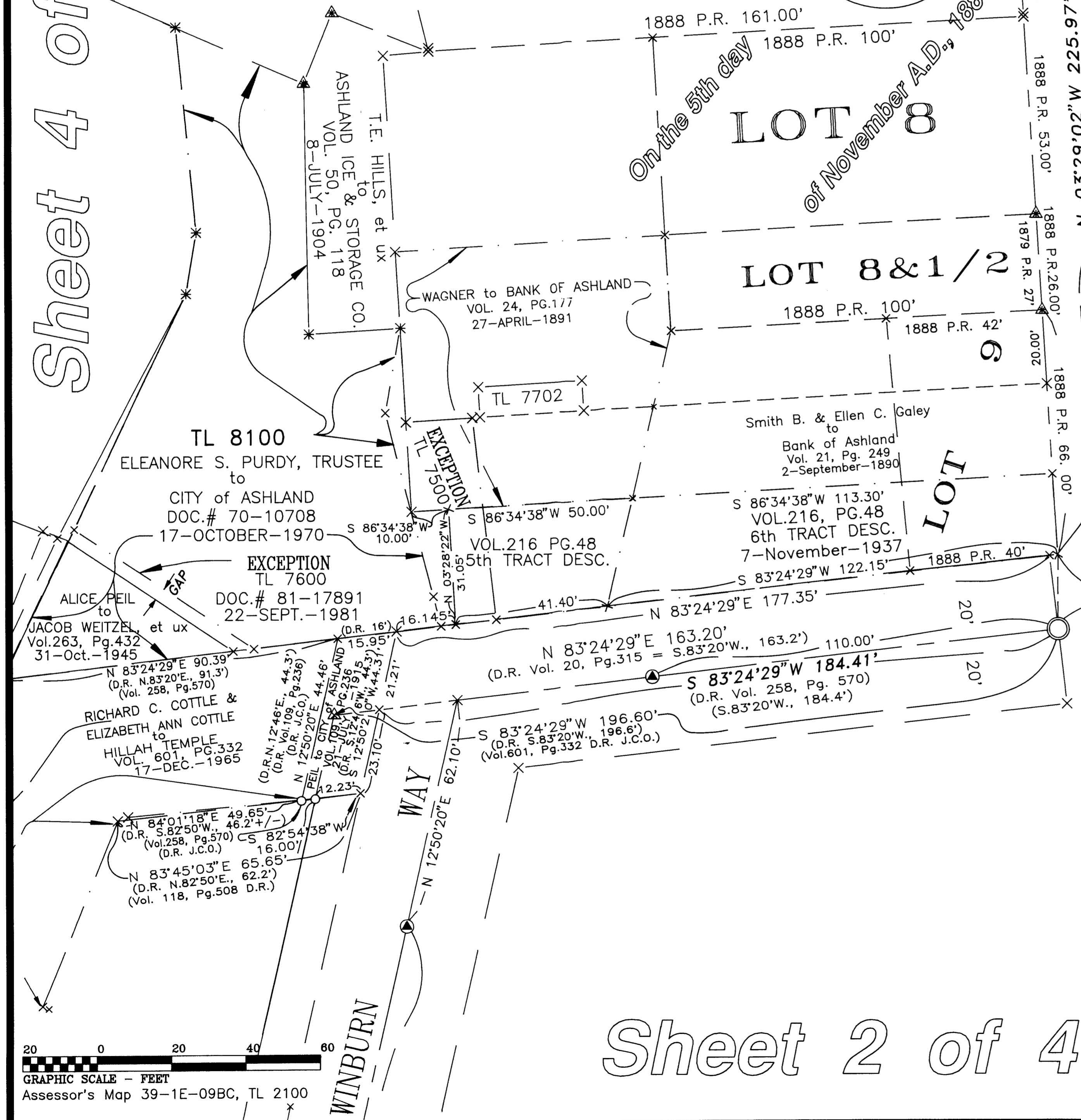
Telephone: 488-5347
TRUE MERIDIAN at the
West line of Sec. 9
(derived from Jackson County Surveyor's)
(N.O.A.A. net established in 1988)

SHEET INDEX

- Northeast Quadrant = Sheet 1 of 4
- Southeast Quadrant = Sheet 2 of 4
- Southwest Quadrant = Sheet 3 of 4
- Northwest Quadrant = Sheet 4 of 4

LEGEND

- Fd. 2.5 inch diam. bronze cap marked +, 3.5 inches below asphaltic surface, unless otherwise shown.
- ✕ Fd. 3/4 inch diam. iron pipe, rusted closed, 5 inches deep. Ref: Vol. 56, Page 399.
- ⊙ Fd. iron monu. at the N.E. Cor. former Perrine Bld'g per intersection tie notes in the possession of the City of Ashland Engineering Division. NOTE: This iron bar monument is called for in the deed from John M. McCall & Mary E. McCall to Henry B. Carter & Dejos R. Mills and set forth in Vol. 13, Page 378 & recorded February 1, 1887. Also, refer to Vol. 19, Page 570 recorded October 2, 1889. M.L. McCall's ledger of surveys, since titled "XX" OLD SURVEYS, SAVE, (VALUABLE) on the front of said ledger, on page 65 describes the type of monument that was set at the N.E. cor. of J.M. McCall's store in Ashland. In the deeds aforementioned, it also calls this bar to be on the West side of Main Street. This bar is described as being: 3-1/2" x 1-1/2" x 1/2".
- ⊗ Computed locations, nothing found or set.
- ⊙ Set 30 inch long by 1 inch diam. iron pipe with 2.5 inch diam. bronze cap marked: SWAIN SURVEYING, Survey Monument and a drill hole all in a Monument Case.
- ⊙ Set 30 inch long by 1 inch diam. iron pipe with 3 inch diam. bronze cap marked: CITY OF ASHLAND, SURVEY MARKER, 2000 and a drill hole, all placed in a monument case.
- ⊙ Set 30 inch long by 1 inch diam. iron pipe with 3 inch diam. bronze cap marked: CITY OF ASHLAND, P.O.T., SURVEY MARKER, 2000, and a drill hole, all placed in a monument case.
- ⊙ Set 30 inch long by 5/8 inch diam. iron rod with a 1.5 inch diam. alumn. cap marked: CITY OF ASHLAND, 3 inches deep.
- ⊙ Set a lead plug with brass nail and brass tag marked: LS 759 in either a concrete footing for a building or in the footing of a concrete wall.
- ⊙ Set a 30 inch long by 5/8 inch diam. iron rod with 1.5 inch diam. alumn. cap marked: CITY OF ASHLAND and a punch hole, flush with parking lot asphaltic surface.
- ⊙ Fd. iron pipe with 3 inch diam. bronze disk marked: CITY of ASHLAND, SURVEY MONUMENT in a monument case. Intersection North Main & Granite St.
- ⊙ Fd. 3/4 inch diam. iron pipe in monument case per City of Ashland INTERSECTION TIES reference book.
- ⊙ Fd. iron pipe with 3 inch diam. bronze disk marked: CITY OF ASHLAND, NO., 1992, LS759, SURVEY MARKER in a monument case. Refer to City of Ashland Survey Field Book #140, Page 27.



Job: C97-33
 Coord. File: C:\CG44C\DATA\C97-33M3\C97R33M3.crd
 SCREEN FILE: C:\CG44C\DATA\C97-33M3\C97R33M2.dwg

	City of Ashland	
	DEPT. OF PUBLIC WORKS • ENGINEERING DIVISION	
	MAP of SURVEY	
	Northwest Quarter of Section 9, Township 39 South, Range 1 East of the Willamette Base and Meridian, JACKSON COUNTY OREGON	
	Drawn by: Everett L. Swain	Date: 6/09/2000
Checked by:	Date:	
Approved: City Engr.	Date:	
Scale: AS SHOWN	Drawing No. 1 of 4	

SURVEY NARRATIVE TO COMPLY WITH PARAGRAPH 209.250

ref: C97-33.nar

Page 2

Granite and High Street was held as was originally measured when both monuments were in place. This re-established point was then checked by trilateration to the remaining found reference points and the position was found to be very acceptable.

BASIS OF BEARING:

True Meridian at the West Line of Section 9, Township 39 South, Range 1 East, as derived from the National Oceanic and Atmospheric Administration (formerly Coast and Geodetic Survey) survey net established in 1968 and filed in the office of the Jackson County Surveyor.

City Survey Crew:

Everett L. Swain, P.L.S.
Assistant City Surveyor/
Party Chief

J. Reid Pallady
Engineering Tech. II

Jeremy Lowe
Engineering Tech. I

Equipment used:

Wild T-2
Lietz Set 4
Wild Invar Subtense Bar
All in good adjustment.

June 9, 2000

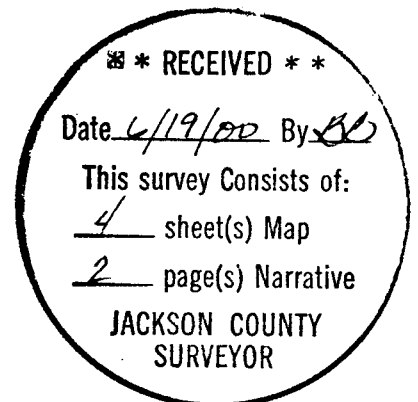
ref: C97-33.nar

City of Ashland
Everett L. Swain, PLS
Assistant City Surveyor
20 East Main Street
Ashland, Oregon 97520



Everett L. Swain
OREGON
JULY 8, 1966
EVERETT L. SWAIN
759

Surveyor's Registration
Renewal Date: June 30, 2000



Survey No. 16742

**SURVEY NARRATIVE TO COMPLY WITH PARAGRAPH 209.250
OREGON REVISED STATUTES**

SURVEY FOR: City of Ashland
City Hall
20 East Main Street
Ashland, Oregon 97520

LOCATION: Situated in Donation Land Claim No. 40 in the Northwest Quarter of Section 9, Township 39 South, Range 1 East of the Willamette Base and Meridian, Jackson County, Oregon.

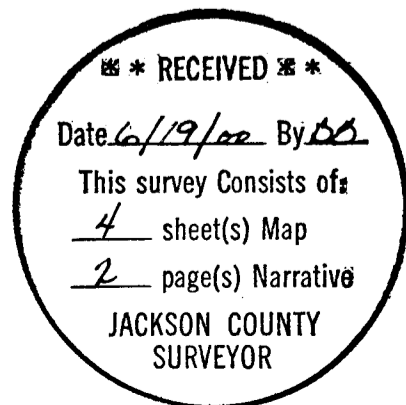
PURPOSE: To survey and monument a portion of the Easterly, Westerly, and the all of the Southerly boundary of the City ownership after the purchase of the HILLAH TEMPLE, A.A.O.N.M.S., A NON PROFIT CHARITABLE ORGANIZATION AKA HILLAH TEMPLE ANCIENT ARABIC ORDER OF THE MYSTIC SHRINE, A CHARITABLE CORPORATION, CITY OF ASHLAND, property.

PROCEDURE: The control for this survey was started from previously established points by Surveyor Swain many years ago, while in private surveying practice. Additional control lines have been established, for various City projects, which were involved in construction only. These new control lines were always tied into and evaluated in relation to Swain's previously established control traverses. These were always found to be acceptable.

First of all, Winburn Way (formerly Mill Street) was retraced by Swain many years ago. Information and deed records from that previous survey were used, along with other data, to establish and monument the Northerly end of said Winburn Way (formerly Mills Street) as shown on the attached map.

The retracement of the Deeds of Record for the previously owned and recently bought City of Ashland property was found to be challenging inasmuch as the deed closures were poor, and in some cases the lack of 'calls' lead to difficulty in the retracement. However, there were 'calls' made in just the right places which allowed me to establish what I thought the overall 'Intent' was for the placement of the boundary lines that I was interested in.

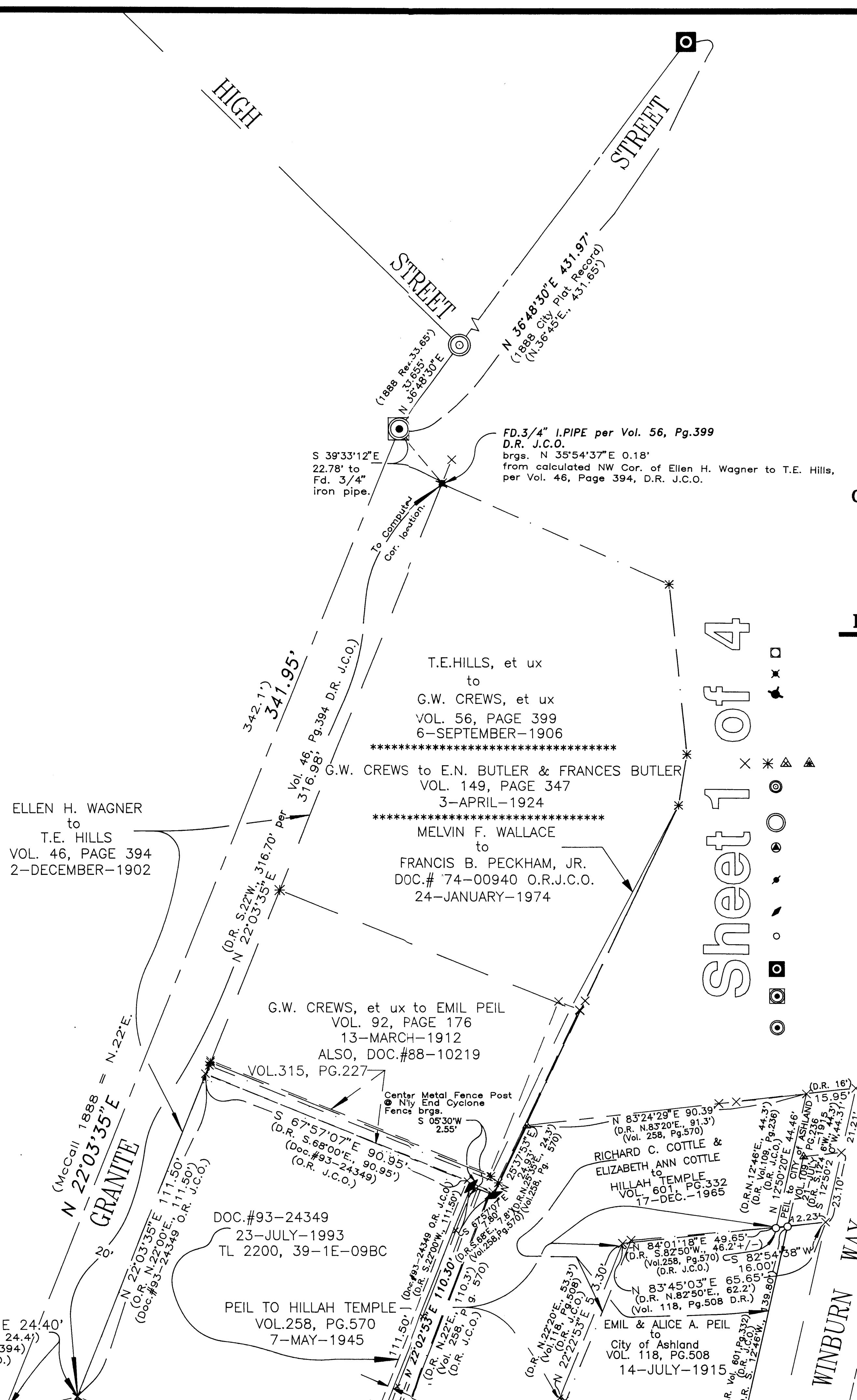
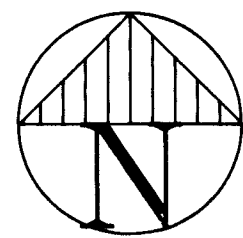
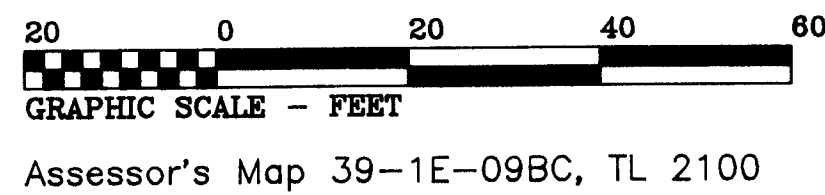
The centerline intersection monument at Granite and High Streets had been referenced out by the survey crew for the City of Ashland some years back. It was looked for because of prior under ground construction in the vicinity of said intersection. In deed it had been destroyed. The monument at the centerline P.I. of Granite Street and the monument at Granite & North Main Street was recovered and utilized for alignment. The distance from the centerline P.I. to the centerline intersection of



LINE

SECTION

Sheet 3 of 4



Sheet 1 of 4

SURVEYOR

CITY of ASHLAND
 Engineering Division
 City Hall
 Ashland, Oregon 97520
 SCALE: 1" = 20'
 BASIS OF BEARING:

JUNE 9, 2000 REVISION: 12/07/2000
 Everett L. Swain, P.L.S.
 Assistant City Surveyor
 Telephone: 488-5347
 TRUE MERIDIAN at the
 West line of Sec.9
 (derived from Jackson County Surveyor's)
 (N.O.A.A. net established in 1968)

LEGEND

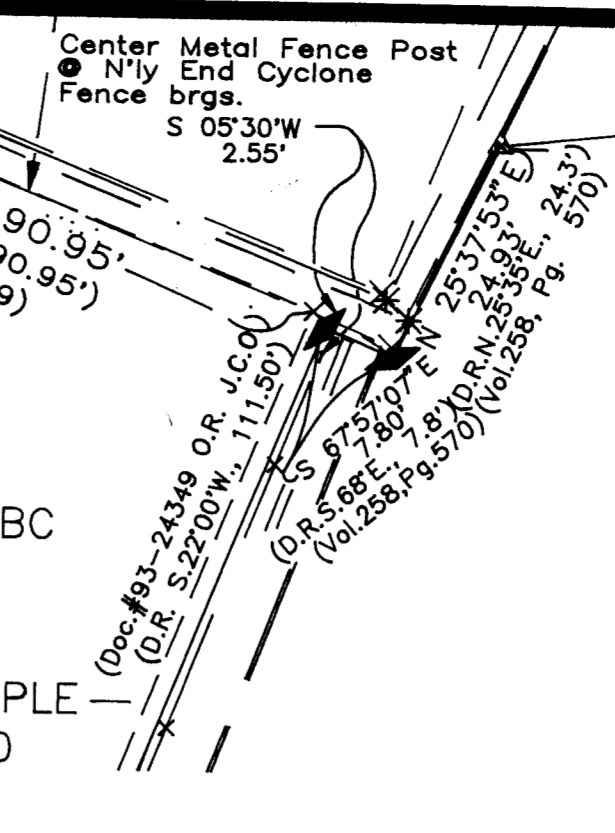
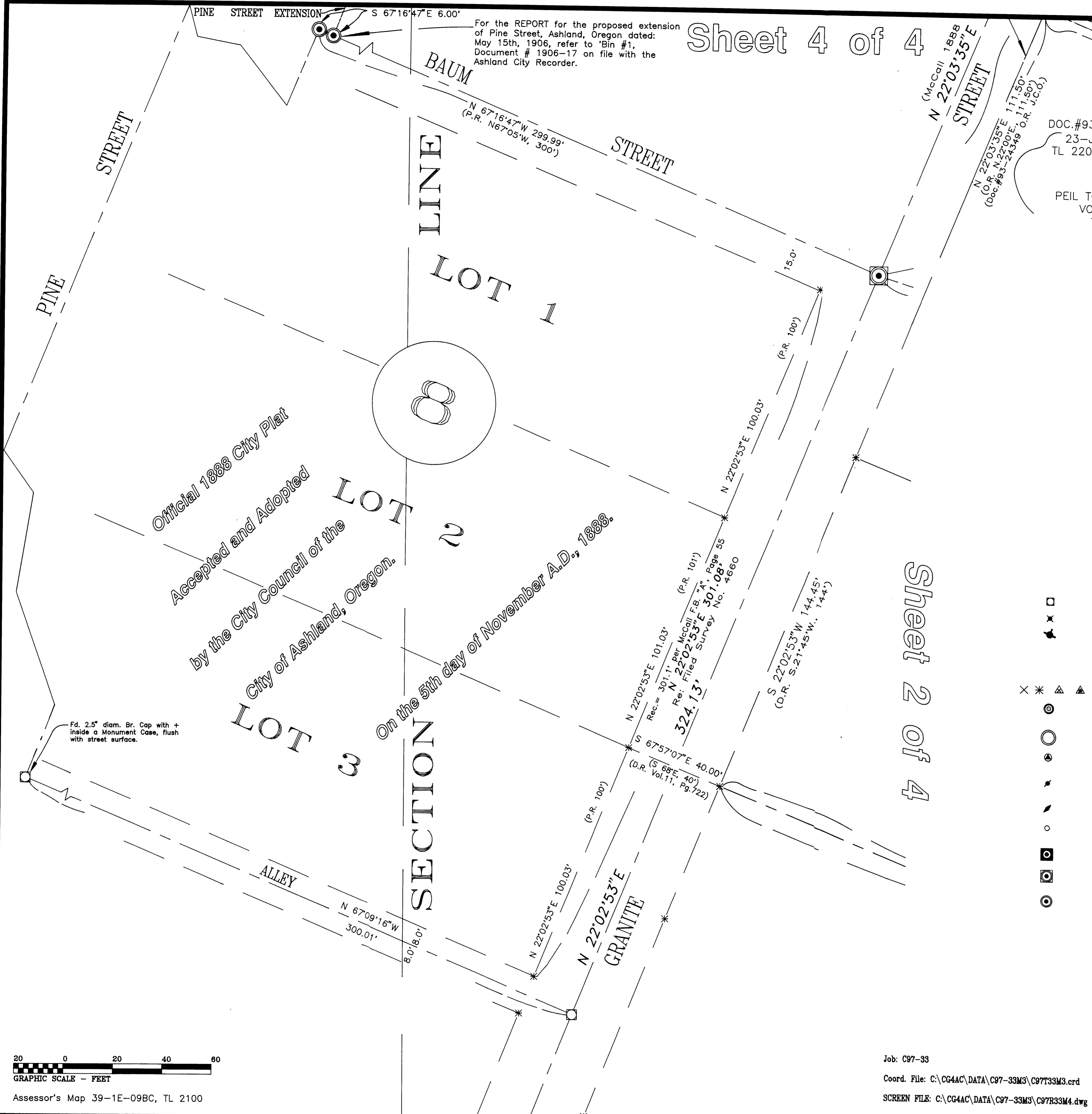
- Fd. 2.5 inch diam. bronze cap marked with +, 3.5 inches below asphaltic surface, unless otherwise shown.
- Fd. 3/4 inch diam. iron pipe, rusted closed, 5 inches deep. Ref: Vol. 56, Page 399.
- Fd. iron monu. at the N.E. Cor. former Perrine Bld'g per intersection tie notes in the possession of the C Engineering Division. NOTE: This iron bar monument is called for in the deed from John M. McCall & Mary E. McCall to Henry B. Carter & Deos R. Mills and set forth in Vol. 13, Page 378 & recorded February 1, 1887. Also, refer to Vol. 19, Page 570 recorded October 2, 1888. M.L. McCall's ledger of surveys, since titled "XX" OLD SURVEYS, SAVE, (VALUABLE) on the front of said ledger, on page 65 describes the type of monume was set at the N.E. cor. of J.M. McCall's store in Ashland. In the deeds aforementioned, it also calls this bar on the West side of Main Street. This bar is described as being: 3-1/2"x 1-1/2"x 1/2".
- Computed locations, nothing found or set.
- Set 30 inch long by 1 inch diam. iron pipe with 2.5 inch diam. bronze cap marked: SWAIN SURVEYING, Survey Monument and a drill hole all in a Monument Case.
- Set 30 inch long by 1 inch diam. iron pipe with 3 inch diam. bronze cap marked: CITY OF ASHLAND, SURVEY MARKER, 2000 and a drill hole, all placed in a monument case.
- Set 30 inch long by 1 inch diam. iron pipe with 3 inch diam. bronze cap marked: CITY OF ASHLAND, P.O.T., SURVEY MARKER, 2000, and a drill hole, all placed in a monument case.
- Set 30 inch long by 5/8 inch diam. iron rod with a 1.5 inch diam. alumn. cap marked: CITY OF ASHLAND, 3 inches deep.
- Set a lead plug with brass nail and brass tag marked: LS 759 in either a concrete footing for a building or in the footing of a concrete wall.
- Set a 30 inch long by 5/8 inch diam. iron rod with 1.5 inch diam. alumn. cap marked: CITY OF ASHLAND and a punch hole, flush with parking lot asphaltic surface.
- Fd. iron pipe with 3 inch diam. bronze disk marked: CITY OF ASHLAND, SURVEY MONUMENT in a monument case. Intersection North Main & Granite St.
- Fd. 3/4 inch diam. iron pipe in monument case per City of Ashland INTERSECTION TIES reference book.
- Fd. iron pipe with 3 inch diam. bronze disk marked: CITY OF ASHLAND, NO., 1992, LS759, SURVEY MARKER in a monument case. Refer to City of Ashland Survey Field Book #140, Page 27.

RECEIVED
 Date: 6/17/00 By: [Signature]
 This survey consists of:
 4 sheets
 1 page(s) narrative
 1 SON COUNTY SURVEY

	City of Ashland	
	DEPT. OF PUBLIC WORKS • ENGINEERING DIVISION	
MAP OF SURVEY		
located in the Northwest Quarter of Section 9, Township 39 South, Range 1 East of the Willamette Base and Meridian, JACKSON COUNTY, OREGON		
Drawn by: Everett L. Swain	Date: 6/09/2000	Drawing No. 4 of 4
Checked by:	Date:	
Approved: City Engr.	Date:	
Surveyor's Registration Renewal Date: June 30, 2002		Scale: AS SHOWN

Sheet 2 of 4

For the REPORT for the proposed extension of Pine Street, Ashland, Oregon dated: May 15th, 1906, refer to 'Bin #1', Document # 1906-17 on file with the Ashland City Recorder.



RECEIVED
Date: 6/19/2000
This drawing is the property of:
4
2
JAC IN COURTY
EVERETT

DOC.#93-24349
23-JULY-1993
TL 2200, 39-1E-09BC

PEIL TO HILLAH TEMPLE
VOL.258, PG.570
7-MAY-1945

SURVEYOR

CITY of ASHLAND
Engineering Division
City Hall
Ashland, Oregon 97520
SCALE: 1" = 20'
BASIS OF BEARING:

JUNE 9, 2000
Everett L. Swain, P.L.S.
Assistant City Surveyor

REVISION: 12/07/2000

Telephone: 488-5347
TRUE MERIDIAN at the
West line of Sec.9
(derived from Jackson County Surveyor's)
(N.O.A.A. net established in 1988)

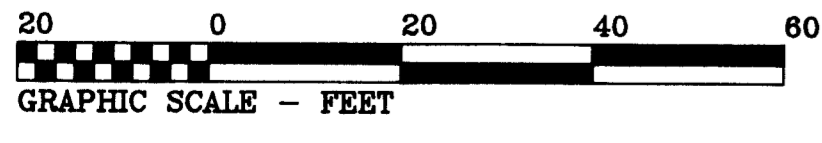
LEGEND

- Fd. 2.5 inch diam. bronze cap marked +, 3.5 inches below asphaltic surface, unless otherwise shown.
- × Fd. 3/4 inch diam. iron pipe, rusted closed, 5 inches deep. Ref: Vol. 56, Page 399.
- ▲ Fd. iron monu. at the N.E. Cor. former Perrine Bld'g per intersection tie notes in the possession of the City of Ashland Engineering Division. NOTE: This iron bar monument is called for in the deed from John M. McCall & Mary E. McCall to Henry B. Carter & Delos R. Mills and set forth in Vol. 13, Page 378 & recorded February 1, 1887. Also, refer to Vol. 19, Page 570 recorded October 2, 1889. M.L. McCall's ledger of surveys, since titled 'XX OLD SURVEYS, SAVE (VALUABLE)' on the front of said ledger, on page 65 describes the type of monument that was set at the N.E. cor. of J.M. McCall's store in Ashland. In the deeds aforementioned, it also calls this bar to be on the West side of Main Street. This bar is described as being: 3-1/2" x 1-1/2" x 1/2".
- △ Computed locations, nothing found or set.
- Set 30 inch long by 1 inch diam. iron pipe with 2.5 inch diam. bronze cap marked: SWAIN SURVEYING, Survey Monument and a drill hole all in a Monument Case.
- Set 30 inch long by 1 inch diam. iron pipe with 3 inch diam. bronze cap marked: CITY of ASHLAND, SURVEY MARKER, 2000 and a drill hole, all placed in a monument case.
- Set 30 inch long by 1 inch diam. iron pipe with 3 inch diam. bronze cap marked: CITY of ASHLAND, P.O.T., SURVEY MARKER, 2000, and a drill hole, all placed in a monument case.
- Set 30 inch long by 5/8 inch diam. iron rod with a 1.5 inch diam. alumn. cap marked: CITY of ASHLAND, 3 inches deep.
- Set a lead plug with brass nail and brass tag marked: LS 759 in either a concrete footing for a building or in the footing of a concrete wall.
- Set a 30 inch long by 5/8 inch diam. iron rod with 1.5 inch diam. alumn. cap marked: CITY of ASHLAND and a punch hole, flush with parking lot asphaltic surface.
- Fd. iron pipe with 3 inch diam. bronze disk marked: CITY of ASHLAND, SURVEY MONUMENT in a monument case. Intersection North Main & Granite St.
- Fd. 3/4 inch diam. iron pipe in monument case per City of Ashland INTERSECTION TIES reference book.
- Fd. iron pipe with 3 inch diam. bronze disk marked: CITY of ASHLAND, NO., 1992, LS759, SURVEY MARKER in a monument case. Refer to City of Ashland Survey Field Book #140, Page 27.

Official 1888 City Plat
Accepted and Adopted
by the City Council of the
City of Ashland, Oregon.

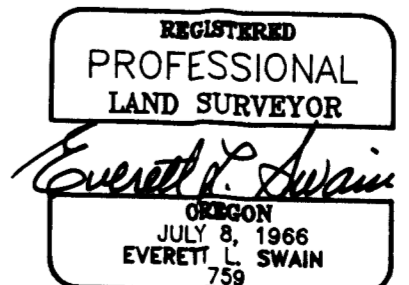
SECTION
On the 5th day of November A.D., 1888.

Sheet 2 of 4



Assessor's Map 39-1E-09BC, TL 2100

Job: C97-33
Coord. File: C:\CG4AC\DATA\C97-33M3\C97T33M3.crd
SCREEN FILE: C:\CG4AC\DATA\C97-33M3\C97R33M4.dwg

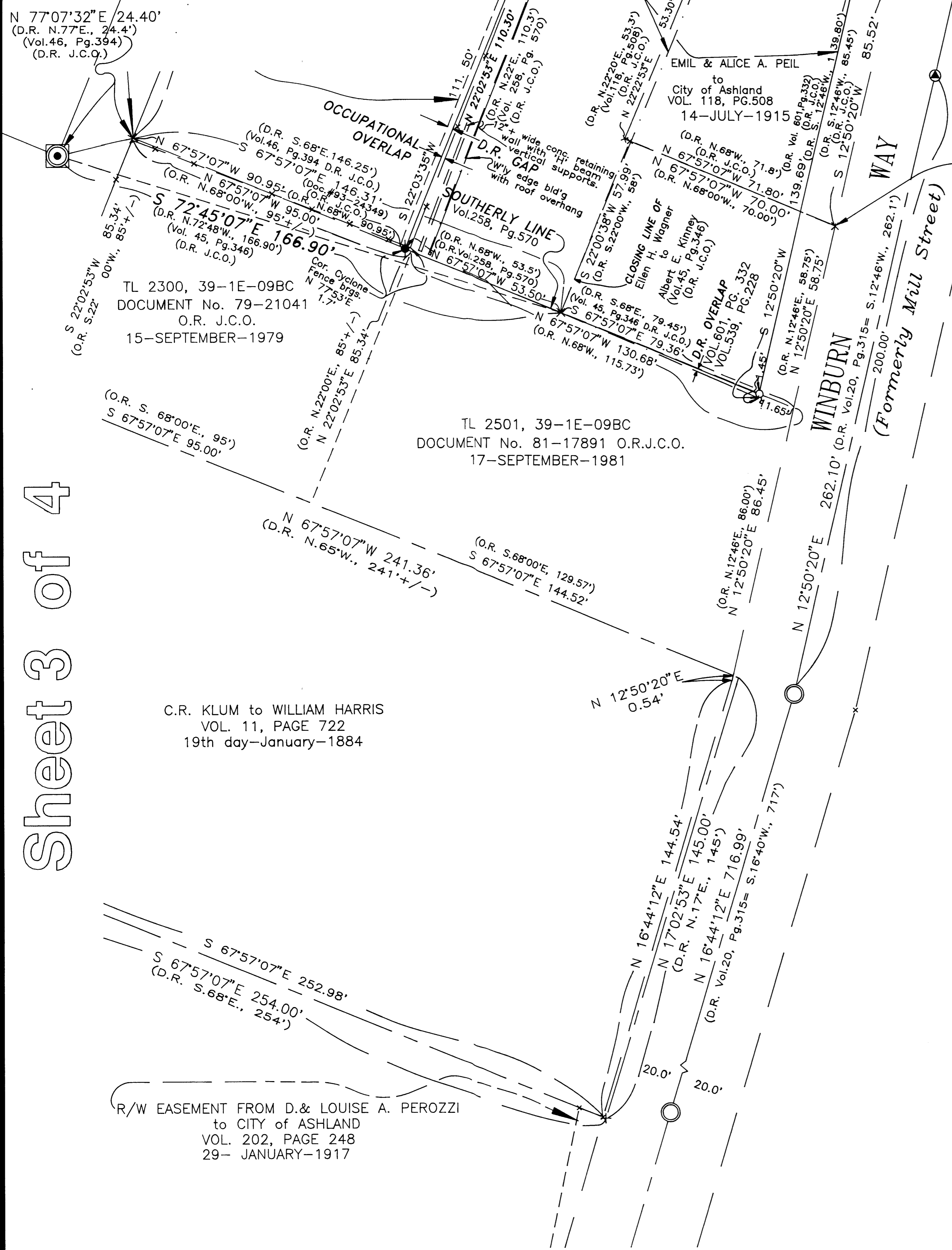


Surveyor's Registration
Renewal Date: June 30, 2002

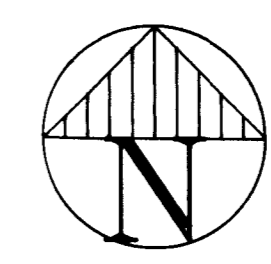
City of Ashland
DEPT. OF PUBLIC WORKS • ENGINEERING DIVISION
MAP of SURVEY
Northwest Quarter of Section 9, Township 39 South, Range 1 East
of the Willamette Base and Meridian,
JACKSON COUNTY OREGON

Drawn by: Everett L. Swain	Date: 6/09/2000	Drawing No.
Checked by:	Date:	3
Approved: City Engr.	Date:	of 4
Scale: AS SHOWN		

RECEIVED
 Date 6/19/00 By
 TT survey consists of:
 1 sheet Map
 2 page Narrative
 JACKSON COUNTY SURVEYOR



ELLEN H. WAGNER
 to
 T.E. HILLS
 VOL. 46, PG. 394
 2-DEC.-1902



SURVEYOR

CITY of ASHLAND
 Engineering Division
 City Hall
 Ashland, Oregon 97520
 SCALE: 1" = 20'
 BASIS OF BEARING:

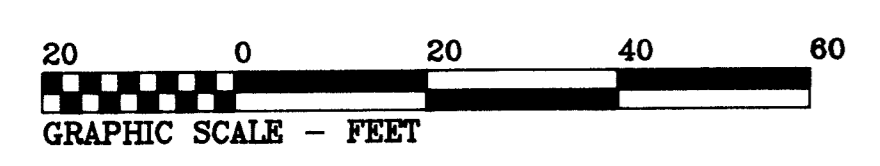
JUNE 9, 2000
 Everett L. Swain, P.L.S.
 Assistant City Surveyor
 Telephone: 488-5347
 TRUE MERIDIAN at the
 West line of Sec. 9
 (derived from Jackson County Surveyor's)
 (N.O.A.A. net established in 1968)

REVISION: 12/07/2000

LEGEND

- Fd. 2.5 inch diam. bronze cap marked +, 3.5 inches below asphaltic surface, unless otherwise shown.
- ✕ Fd. 3/4 inch diam. iron pipe, rusted closed, 5 inches deep. Ref: Vol. 56, Page 399.
- ✕ Fd. iron monu. at the N.E. Cor. former Perrine Bld'g per intersection tie notes in the possession of the City of Ashland Engineering Division. NOTE: This iron bar monument is called for in the deed from John M. McCall & Mary E. McCall to Henry B. Carter & DeLoe R. Mills and set forth in Vol. 13, Page 378 & recorded February 1, 1887. Also, refer to Vol. 19, Page 570 recorded October 2, 1889. M.L. McCall's ledger of surveys, since titled 'XX' OLD SURVEYS, SAVE, (VALUABLE) on the front of said ledger, on page 65 describes the type of monument that was set at the N.E. cor. of J.M. McCall's store in Ashland. In the deeds aforementioned, it also calls this bar to be on the West side of Main Street. This bar is described as being: 3-1/2" x 1-1/2" x 1/2".
- ✕ * △ ▲ Computed locations, nothing found or set.
- ⊙ Set 30 inch long by 1 inch diam. iron pipe with 2.5 inch diam. bronze cap marked: SWAIN SURVEYING, Survey Monument and a drill hole all in a Monument Case.
- ⊙ Set 30 inch long by 1 inch diam. iron pipe with 3 inch diam. bronze cap marked: CITY of ASHLAND, SURVEY MARKER, 2000 and a drill hole, all placed in a monument case.
- ⊙ Set 30 inch long by 1 inch diam. iron pipe with 3 inch diam. bronze cap marked: CITY of ASHLAND, P.O.T., SURVEY MARKER, 2000, and a drill hole, all placed in a monument case.
- ⊙ Set 30 inch long by 5/8 inch diam. iron rod with a 1.5 inch diam. alumn. cap marked: CITY of ASHLAND, 3 inches deep.
- ⊙ Set a lead plug with brass nail and brass tag marked: LS 759 in either a concrete footing for a building or in the footing of a concrete wall.
- ⊙ Set a 30 inch long by 5/8 inch diam. iron rod with 1.5 inch diam. alumn. cap marked: CITY of ASHLAND and a punch hole, flush with parking lot asphaltic surface.
- ⊙ Fd. iron pipe with 3 inch diam. bronze disk marked: CITY of ASHLAND, SURVEY MONUMENT in a monument case. Intersection North Main & Granite St.
- ⊙ Fd. 3/4 inch diam. iron pipe in monument case per City of Ashland INTERSECTION TIES reference book.
- ⊙ Fd. iron pipe with 3 inch diam. bronze disk marked: CITY of ASHLAND, NO., 1992, LS759, SURVEY MARKER in a monument case. Refer to City of Ashland Survey Field Book #140, Page 27.

Sheet 3 of 4



Assessor's Map 39-1E-09BC, TL 2100

Job: C97-33
 Coord. File: C:\CG4AC\DATA\C97-33M3\C97T33M3.crd
 SCREEN FILE: C:\CG4AC\DATA\C97-33M3\C97R33M3.dwg

	City of Ashland	
	DEPT. OF PUBLIC WORKS • ENGINEERING DIVISION	
	MAP of SURVEY	
	located in Northwest Quarter of Section 9, Township 39 South, Range 1 East of the Willamette Base and Meridian, JACKSON COUNTY OREGON	
	Drawn by: <i>Everett L. Swain</i>	Date: 6/09/2000
Checked by:	Date:	
Approved: City Engr.	Date:	
Scale: AS SHOWN	2 of 4	