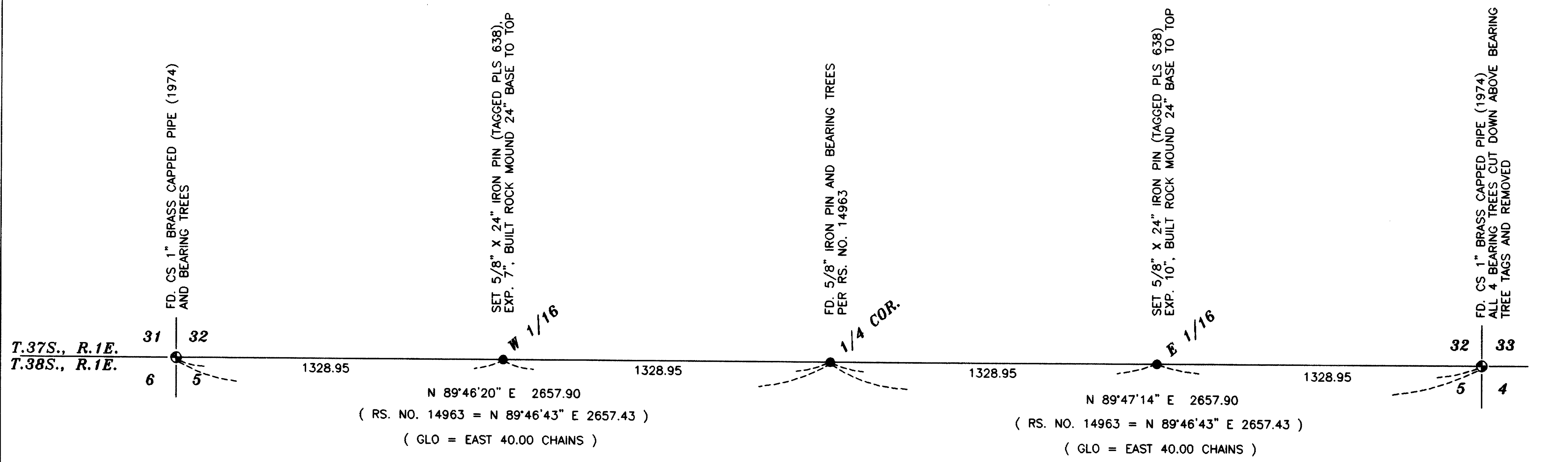


16706



REGISTERED
PROFESSIONAL
LAND SURVEYOR

George Burrell

OREGON
JULY 10, 1964
GEORGE R. BURRELL
638

EXP. 12-31-01

BASIS OF BEARING

STATE PLANE COORDINATES (NAD 83) DERIVED FROM GPS AND ROTATED 1°31'27" CCW AT THE NORTH 1/4 CORNER OF SECTION 5.

DISTANCES SHOWN ARE GRID DIVIDED BY 0.999809



SCALE: 1"=400'

MAP OF SURVEY

LOCATED IN
SECTION 5, T.38S., R.1E., W.M.
JACKSON COUNTY, OREGON

RECEIVED

Date 11/15/00 By REE

This survey consists of:
/ sheet(s) Map
/ page(s) Narrative

JACKSON COUNTY
SURVEYOR

FOR: BARBARA DECKER
BY: GEORGE BURRELL, P.L.S.
PMB 261
2305-C ASHLAND STREET
ASHLAND, OR. 97520

NOVEMBER 3, 2000

T.L. NO. 200 - 38 - 1E - 5

16706

SURVEY NARRATIVE TO COMPLY WITH O.R.S. 209.250

FOR:

Barbara Decker
3303 N. Valley View Road
Ashland, OR 97520

LOCATION:

Section 5, Township 38 South, Range 1 East of the Willamette Meridian, Jackson County, Oregon.

PURPOSE:

To monument the East and West 1/16 section corners common to sections 32 and 5, Township 37 and 38 South, Range 1 East of the Willamette Meridian, and to mark the line between said corners.

PROCEDURE:

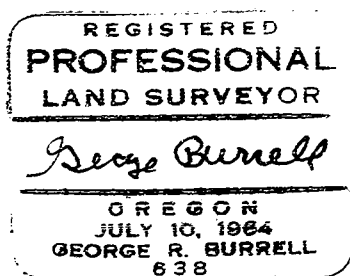
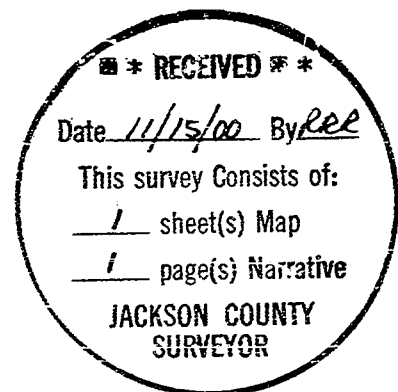
The Northwest, North ¼ and the Northeast corner positions of section 5 were determined from GPS observations, which were reduced to Oregon State Plane coordinates (NAD 83 Datum) using the International definition for the foot. Using supplemental GPS control, the East and West 1/16 corners were then monumented as shown on the accompanying map. The true line between said corners was run and marked with wood stakes.

From the West 1/16 corner, a N-S wire fence bears West 19.5 feet, and a N-S and East fence corner bears North 11° 58' West 122.9 feet.

From the East 1/16 corner, a N-S wire fence bears East 8.4 feet, and a N-S and West fence corner bears South 5° 52' East 47.3 feet.

BY:

George Burrell, PLS
PMB 261
2305-C Ashland Street
Ashland, OR 97520



Exp. 12/31/01