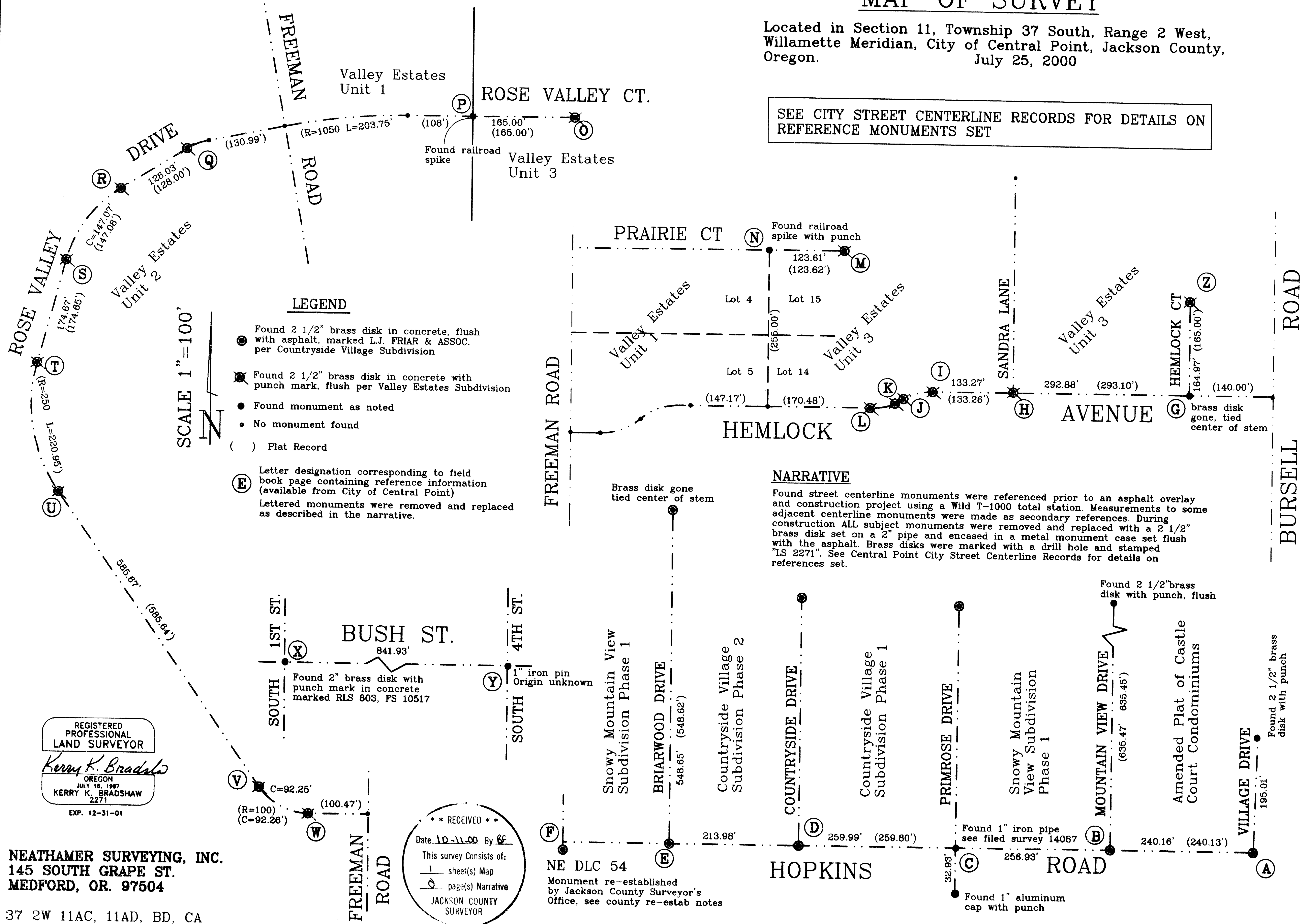


# MAP OF SURVEY

Located in Section 11, Township 37 South, Range 2 West,  
Willamette Meridian, City of Central Point, Jackson County,  
Oregon.  
July 25, 2000

SEE CITY STREET CENTERLINE RECORDS FOR DETAILS ON  
REFERENCE MONUMENTS SET



### LEGEND

- Found 2 1/2" brass disk in concrete, flush with asphalt, marked L.J. FRIAR & ASSOC. per Countryside Village Subdivision
- ⊗ Found 2 1/2" brass disk in concrete with punch mark, flush per Valley Estates Subdivision
- Found monument as noted
- No monument found
- ( ) Plat Record
- (E) Letter designation corresponding to field book page containing reference information (available from City of Central Point)  
Lettered monuments were removed and replaced as described in the narrative.

### NARRATIVE

Found street centerline monuments were referenced prior to an asphalt overlay and construction project using a Wild T-1000 total station. Measurements to some adjacent centerline monuments were made as secondary references. During construction ALL subject monuments were removed and replaced with a 2 1/2" brass disk set on a 2" pipe and encased in a metal monument case set flush with the asphalt. Brass disks were marked with a drill hole and stamped "LS 2271". See Central Point City Street Centerline Records for details on references set.

REGISTERED  
PROFESSIONAL  
LAND SURVEYOR

*Kerry K. Bradshaw*  
OREGON  
JULY 16, 1987  
KERRY K. BRADSHAW  
2271  
EXP. 12-31-01

NEATHAMER SURVEYING, INC.  
145 SOUTH GRAPE ST.  
MEDFORD, OR. 97504

37 2W 11AC, 11AD, BD, CA

**\*\* RECEIVED \*\***  
Date 10-11-00 By BC  
This survey consists of:  
1 sheet(s) Map  
0 page(s) Narrative  
JACKSON COUNTY  
SURVEYOR

NE DLC 54  
Monument re-established  
by Jackson County Surveyor's  
Office, see county re-estab notes