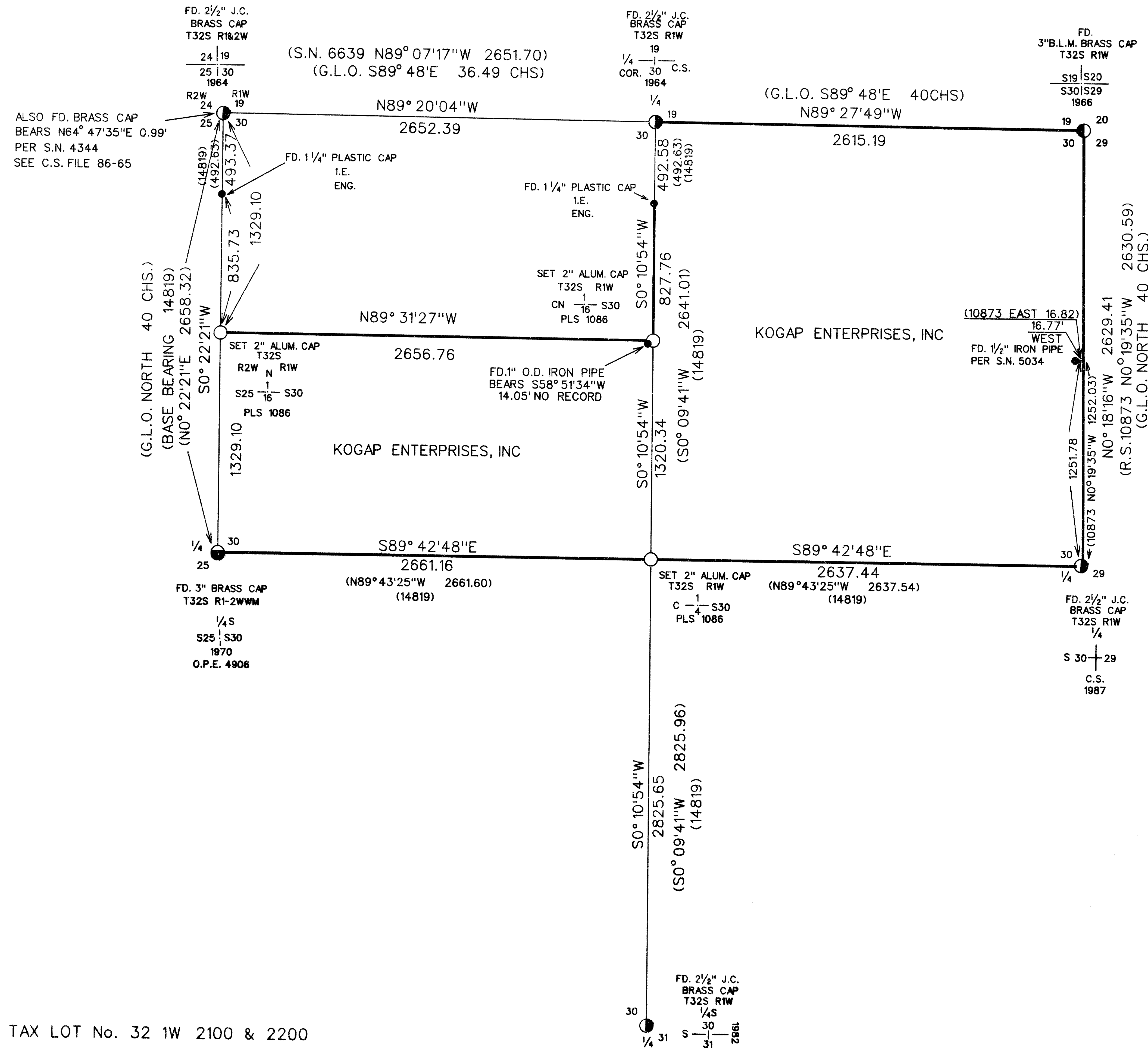


# MAP OF SURVEY LOCATED IN SECTION 30, TOWNSHIP 32 SOUTH, RANGE 1 WEST, WILLAMETTE MERIDIAN



**SURVEY FOR**  
KOGAP ENTERPRISES, INC  
P.O. BOX 1608  
MEDFORD, OREGON 97501

- LEGEND**
- FOUND 2 1/2" JACKSON COUNTY BRASS CAP
  - FOUND 3" BLM BRASS CAP
  - FOUND 3" BRASS CAP PER SURVEY No. 4344
  - FOUND MONUMENT AS INDICATED
  - SET 5/8" BY 30" IRON PIN WITH 2" ALUM. CAP PLS 1086
  - LINE MARKED THIS SURVEY
  - ( ) RECORD DATA

**BASIS OF BEARING**  
SURVEY No. 14819

**SCALE**      **DATE**  
1" = 500'      OCTOBER 16, 2000

**SURVEY BY**  
ARTHUR R. RAMBO  
735 VISTA PARK DRIVE  
EAGLE POINT, OREGON 97524

REGISTERED  
**PROFESSIONAL**  
LAND SURVEYOR  
*Arthur R. Rambo*  
OREGON  
JULY 30, 1976  
ARTHUR R. RAMBO  
NO 1086  
EXPIRES DECEMBER 31, 2000

RECEIVED  
Date 10/17/00 By AR  
This survey consists of:  
1 sheet(s) Map  
2 page(s) Narrative  
JACKSON COUNTY  
SURVEYOR

TAX LOT No. 32 1W 2100 & 2200

## FROM WHICH:

A 7 inch diameter Douglas Fir bears S43°56'W, 20.4 feet, marked N1/16S25 in upper face, BT in lower face.

A 9.5 inch diameter Madrona bears S25°48'E, 58.3 feet marked N1/16S30 in upper face, BT in lower face.

Centernorth one-sixteenth corner Section 30, Township 32 South, Range 1 West. At the corner location I set a 5/8 by 30 inch iron pin with a 2" diameter Aluminum cap marked:  
T32S R1W

1  
CN --- S30  
16  
PLS 1086

## FROM WHICH:

A 6 inch diameter Douglas Fir bears N10°28'W, 40.5 feet marked CN1/16S30 in upper face, BT in lower face.

A 10 inch diameter Maple bears S51°20'E, 16.7 feet marked CN1/16S30 in upper face, BT in lower face.

An unrecorded 1" O.D. iron pipe bears S58°51'34"W, 14.05.

Center one-quarter corner Section 30, Township 32 South, Range 1 West. At the corner location I set a 5/8 by 30 inch iron pin with a 2" diameter Aluminum cap marked:

T32S R1W  
1  
C - S30  
4  
PLS 1086

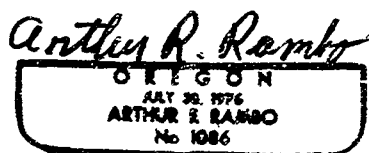
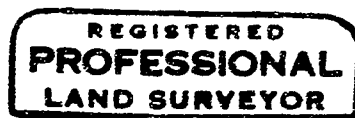
## FROM WHICH:

A 7 inch diameter Yew bears S87°41'E, 47.2 feet marked C1/4S30 in upper face, BT in lower face.

An 8 inch diameter Yew bears S63°21'E, 37.1 feet marked C1/4S30 in upper face, BT in lower face.

A 10 inch diameter Douglas Fir bears N39°38'W, 24.4 feet marked C1/4S30 in upper face, BT in lower face.

A 19 inch diameter White Fir bears N55°37'E, 18.2 feet marked C1/4S30 in upper face, BT in lower face.



Expires December 31, 2000

Tax Lot No. 32 1W 2100 & 2200

## SURVEY NARRATIVE TO COMPLY WITH O.R.S. 209.250

LOCATION: Section 30, Township 32 South, Range 1 West, Willamette Meridian, Jackson County, Oregon.

SURVEY FOR: KOGAP ENTERPRISES, INC.  
P.O. Box 1608  
Medford, Oregon 97501

SURVEY BY: Rambo Surveying  
Arthur R. Rambo  
735 Vista Park Drive  
Eagle Point, Oregon 97524

DATE: October 16, 2000

BASIS OF BEARING: Survey Number 14819

PURPOSE: To survey, mark, and post certain property lines of KOGAP Enterprises, Inc. land as shown on the map to accompany this narrative.

PROCEDURE: A search of records revealed that the original corners needed for control of this survey had been re-established from original evidence. The Northwest corner of Section 30 had been re-established from original evidence by the Jackson County Surveyor in 1965. Another monument was set for this corner on survey number 4344 at a bearing of N64°47'35"E and a distance of 0.99 feet from the Jackson County monument. The Jackson County monument was accepted as the position of the Northwest corner of said section 30 after evaluating the re-establishment notes for this corner. (Also see Jackson County case file 86-65.)

A traverse was ran tying to the Section and Quarter Section corners needed for control of this survey. The subdivision of Section 30 was calculated, monuments were set and lines marked as shown on the plat to accompany this narrative.

CORNERS SET THIS SURVEY:

All measurements to bearing trees are to the center of tree at base. All bearing trees have a Brass washer marked PLS 1086 nailed to lower face.

North one-sixteenth corner common to Section 30, Township 32 South, Range 1 West and Section 25, Township 32 South, Range 2 West. At the corner location I set a 5/8 by 30 inch iron pin with a 2" diameter Aluminum cap marked:

T32S  
R2W R1W  
N  
1  
S25 - - S30  
16  
PLS 1086

