

# LONE ROCK TIMBER CO.

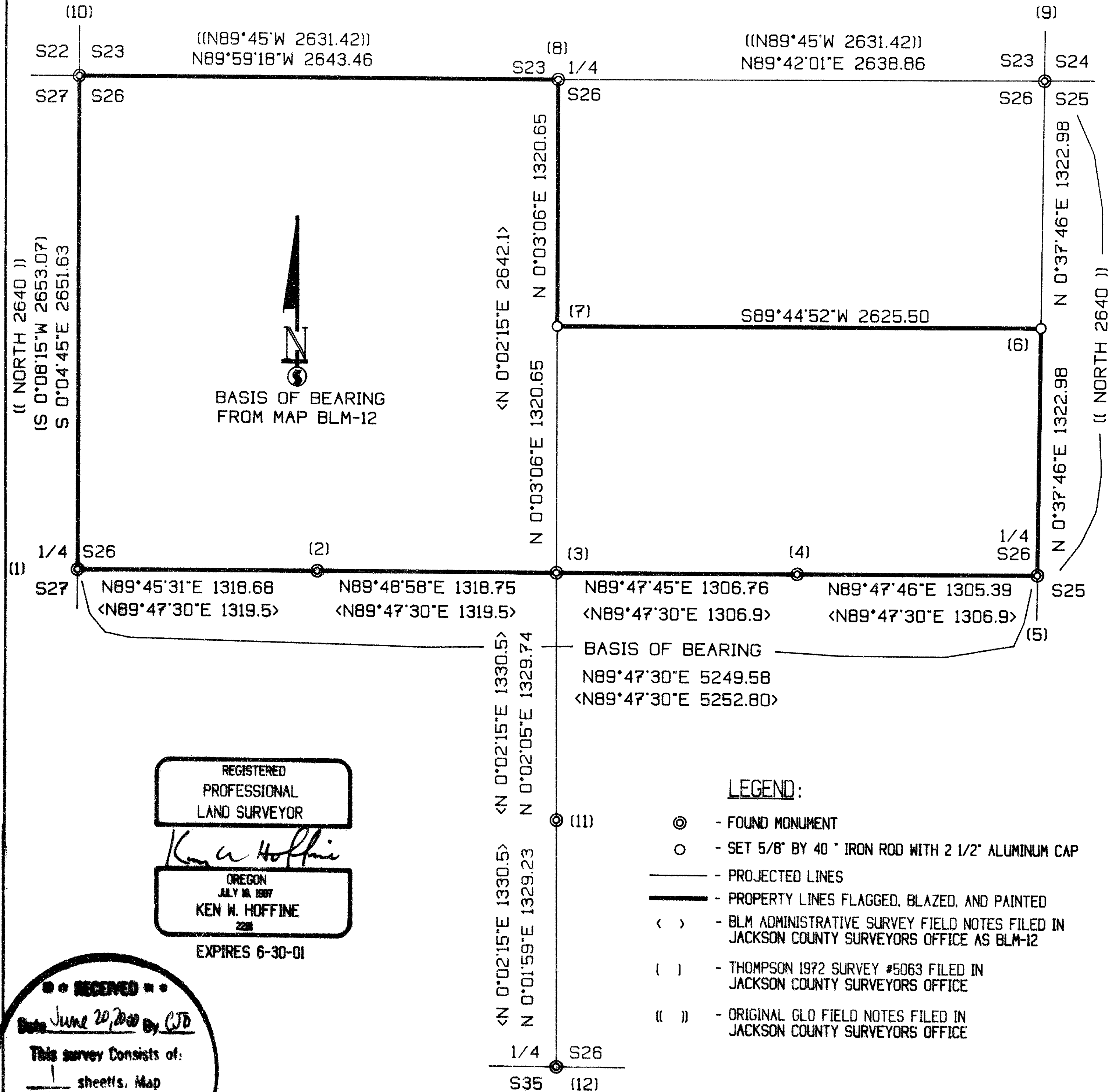
PO BOX 1127 ROSEBURG OREGON 97470 DATE: MAY 2000  
SECTION 26, TOWNSHIP 38 SOUTH, RANGE 3 EAST, W.M. JACKSON COUNTY, OREGON  
LONE ROCK TIMBER TRACT: M 38-3E-26 SCALE: 1" = 600'

## NARRATIVE:

THIS SURVEY WAS CONDUCTED TO ESTABLISH PROPERTY LINES AND PROPERTY CORNERS FOR TIMBER CUTTING PURPOSES. WE INITIATED THIS SURVEY AT THE WEST 1/4 OF SECTION 26, A BLM BCIP SET FROM ORIGINAL EVIDENCE. WE BEGAN A CLOSED LOOP RANDOM TRAVERSE EASTERLY FINDING AND TIEING IN OUR TRAVERSE 5/8" IRON RODS, SET IN A BLM ADMINISTRATIVE SURVEY, FOR THE CW1/16, CENTER 1/4 AND CENTER EAST 1/16. AT THE EAST 1/4 OF SECTION 26 A BLM BCIP SET FROM ORIGINAL EVIDENCE WE THEN TRAVERSED NORTHERLY AND WESTERLY NEAR PROPERTY LINES AS SHOWN HEREON TO THE NORTH 1/4 OF SECTION 26 A BLM BCIP SET FROM ORIGINAL EVIDENCE. WE CONTINUED OUR RANDOM TRAVERSE WESTERLY AND SOUTHERLY TO TIE IN THE NW CORNER OF SECTION 26 A BLM BCIP SET FROM ORIGINAL EVIDENCE. WE THEN MADE A CLOSED LOOP TRAVERSE FROM A SURVEY POINT NEAR AN APPROXIMATE NE1/16 LOCATION TO THE NORTHEAST CORNER OF SECTION 26 A GLO BCIP SET FROM ORIGINAL EVIDENCE. WE ALSO RAN AN OPEN TRAVERSE FROM THE BLM CENTER 1/4 SOUTHERLY TO CHECK LOCATION AND TIE IN THE CENTER SOUTH 1/16 BLM ADMINISTRATIVE CORNER AND THE SOUTH 1/4 OF SECTION 26 A BLM BCIP SET FROM ORIGINAL EVIDENCE.

THE BLM ADMINISTRATIVE SURVEY CORNERS HAVE BEEN USED FOR MANY YEARS BY BOTH PRIVATE AND PUBLIC LAND OWNERS TO DO TIMBER MANAGEMENT ACTIVITIES IN THIS SECTION. THE BLM ADMINISTRATIVE CORNERS ARE WITHIN ERROR LIMITS FOR WHEN THEY WERE SET 23 YEARS AGO. I ACCEPT THE LOCATION OF THE BLM ADMINISTRATIVE CENTER 1/4 TO FURTHER SUBDIVIDE THE SECTION AND SET THE CENTER NORTH 1/16 CORNER AND THE NORTH 1/16 BETWEEN SECTIONS 25 AND 26.

WE MARK THE PROPERTY LINES AS SHOWN HEREON. THIS SURVEY WAS DONE WITH A NIKON TM 450 TOTAL STATION WITH GARY ANGIOLET, MARK DVORSCAK AND IGNACIO ROMAN ASSISTING ME.



## CORNER INFORMATION:

- 1) WEST 1/4 CORNER OF SECTION 26  
FOUND 1958 BLM BRASS CAP 0.6 FEET ABOVE GROUND.  
-- 21" 20 FOOT TALL WHITE FIR SNAG BEARS N68 1/4"W. 37.6 FEET (RECORD N69"W. 37.62 FEET) HEALED FACE AND BLM TAG  
-- 24" BROKEN UP STUMP BEARS N76"E. 17.2 FEET AS PER RECORD SOME VISIBLE SCRIBING  
-- 20" WHITE FIR RECORD S47"E. 9.9 FEET IS DOWN AND UPROOTED  
-- 17" WHITE FIR BEARS S24 1/4"E. 57.7 FEET. WE SCRIBE 1/4 S26 B.T. AND TAG TREE  
-- 37" DOUGLAS FIR BEARS N16 1/2"W. 33.1 FEET. WE SCRIBE 1/4 S27 B.T. AND TAG TREE  
CORNER LIES AT SOUTHWEST CORNER OF RECENT LOGGING UNIT.
- 2) CENTERWEST 1/16 CORNER OF SECTION 26  
FOUND 5/8" IRON ROD FROM BLM ADMINISTRATIVE SURVEY FILE IN JACKSON COUNTY SURVEYORS OFFICE AS BLM-12.  
-- 31" DOUGLAS FIR BEARS N9 3/4"W. 26.9 FEET (RECORD N10 1/4"W. 26.4 FEET) HEALED FACE AND TAG WITH BEARING AND DISTANCE  
-- 32" WHITE FIR BEARS S81 3/4"W. 35.7 FEET (RECORD S80 1/2"W. 36.0 FEET) HEALED FACE AND TAG WITH BEARING AND DISTANCE  
CORNER LIES ON NORTH SIDE OF OLD SKID ROAD THAT RUNS EAST-WEST.
- 3) CENTER 1/4 CORNER OF SECTION 26  
FOUND 5/8" IRON ROD FROM BLM ADMINISTRATIVE SURVEY FILED IN JACKSON COUNTY SURVEYORS OFFICE AS BLM-12.  
-- 28" DOUGLAS FIR BEARS S14 1/4"W. 47.2 FEET (RECORD S13 1/2"W. 48.0 FEET) HEALED FACE AND TAG WITH BEARING AND DISTANCE  
-- 14" DOUGLAS FIR BEARS N70"W. 18.6 FEET (RECORD N70 1/4"W. 18.4 FEET) HEALED FACE AND TAG WITH BEARING AND DISTANCE  
-- 37" DOUGLAS FIR BEARS N50 1/4"E. 57.4 FEET. WE SCRIBE C1/4 S26 B.T. AND TAG TREE  
-- 29" DOUGLAS FIR BEARS N80 3/4"E. 91.6 FEET. WE SCRIBE C1/4 S26 B.T. AND TAG TREE  
CORNER LIES ON SOUTH SIDE OF BROAD FLAT RIDGE APPROXIMATELY 400 FEET EAST OF JEEP ROAD.
- 4) CENTEREAST 1/16 CORNER OF SECTION 26  
FOUND 5/8" IRON ROD FROM BLM ADMINISTRATIVE SURVEY FILED IN JACKSON COUNTY SURVEYORS OFFICE AS BLM-12.  
-- 26" WHITE FIR BEARS S41 1/4"E. 9.2 FEET (RECORD S40 1/2"E. 9.4 FEET) HEALED FACE AND TAG WITH BEARING AND DISTANCE  
-- 18" WHITE FIR BEARS N32"W. 29.2 FEET (RECORD N32 1/2"W. 29.0 FEET) HEALED FACE AND TAG WITH BEARING AND DISTANCE  
CORNER LIES IN OLD SKID ROAD APPROXIMATELY 275 FEET EAST OF MAIN DIRT ROAD.
- 5) EAST 1/4 CORNER OF SECTION 26  
FOUND 1978 BLM BRASS CAP AT GROUND LEVEL.  
-- 26" YEW BEARS N28 1/2"W. 159.9 FEET (RECORD N27 1/2"E. 159.72 FEET) VISIBLE SCRIBING AND BLM TAG  
-- 26" WHITE FIR BEARS N29"E. 33.4 FEET (RECORD N30"E. 33.66 FEET) WELL HEALED FACE AND TAG  
-- ROTTEN PUSHED OVER STUMP BEARS AT APPROXIMATE RECORD BEARING AND DISTANCE (RECORD S75"W. 21.78 FEET) VISIBLE SCRIBE  
CORNER LIES ON GENTLE EAST FACING SLOPE IN OPEN STAND OF MIXED CONIFERS AND OLD STUMPS APPROXIMATELY 100 FEET SOUTH OF DRAW THAT DRAINS SOUTHEAST.
- 6) NORTH 1/16 CORNER BETWEEN SECTIONS 25 AND 26  
SET 5/8" IRON ROD WITH 2 1/2" ALUMINUM CAP MARKED LONE ROCK TIMBER N1/16 S26/S25 2000 PLS 2291.  
-- 16" WHITE FIR BEARS S87 1/2"E. 17.4 FEET. WE SCRIBE N1/16 S25 B.T. AND TAG TREE  
-- 19" WHITE FIR BEARS N30 1/4"W. 7.3 FEET. WE SCRIBE N1/16 S26 B.T. AND TAG TREE  
CORNER LIES ON BROAD FLAT RIDGE RUNNING EAST-WEST IN MOUND OF STONES.
- 7) CENTER NORTH 1/16 CORNER FOR SECTION 26  
SET 5/8" X 40" IRON ROD WITH 2 1/2" ALUMINUM CAP MARKED LONE ROCK TIMBER CN1/16 S26 2000 PLS 2291.  
-- 24" WHITE FIR BEARS N43 1/4"W. 27.5 FEET. WE SCRIBE CN1/16 S26 B.T. AND TAG TREE  
-- 11" DOUGLAS FIR BEARS S81 1/2"E. 25.8 FEET. WE SCRIBE CN1/16 S26 B.T. AND TAG TREE  
CORNER LIES ON NORTH FACING SLOPE APPROXIMATELY 400 FEET SOUTH OF MAIN ROAD.
- 8) NORTH 1/4 OF SECTION 26  
FOUND 1973 BLM BRASS CAP AT GROUND LEVEL IN MOUND OF STONES WITH 1" IRON PIPE ALONG SIDE.  
-- 15" DOUGLAS FIR BEARS S7 3/4"E. 18.2 FEET (RECORD S6 1/2"E. 18.2 FEET) HEALED FACE  
-- 23" DOUGLAS FIR BEARS N39 1/4"W. 9.5 FEET (RECORD N39"W. 9.24 FEET) HEALED FACE AND BLM TAG  
CORNER LIES ON EAST FACING SLOPE IN MOUND OF STONES.
- 9) NORTHEAST CORNER OF SECTION 26  
FOUND 1957 GENERAL LAND OFFICE CAP 0.5 FEET ABOVE GROUND.  
-- 24" WHITE FIR BEARS N39"E. 86.3 FEET (RECORD N39"E. 86.46 FEET) WELL HEALED FACE AND BLM TAG  
-- 22" WHITE FIR BEARS S62 1/2"E. 30.5 FEET (RECORD S62"E. 30.36 FEET) WELL HEALED FACE  
-- 37" WHITE FIR 50 FEET TALL SNAG BEARS N50 1/2"E. 40.1 FEET (RECORD N50"E. 39.6 FEET) HEALED FACE AND BLM TAG  
-- 15" WHITE FIR BEARS N33 3/4"W. 23.2 FEET WELL HEALED FACE AND BT TAG  
CORNER LIES IN BOTTOM OF WIDE FLAT BASIN.
- 10) NORTHWEST SECTION CORNER FOR SECTION 26  
FOUND 1958 BLM BRASS CAP.  
-- 21" WHITE FIR BEARS N52 1/2"E. 34.2 FEET (RECORD N51"E. 34.32 FEET) WELL HEALED FACE  
-- 20" WHITE FIR BEARS S38 1/2"W. 14.1 FEET (B.T. TAG RECORD S37 1/2"W) HEALED FACE AND BLM TAG  
-- 32" DOUGLAS FIR BEARS N19 1/4"W. 61.0 FEET (RECORD N21"W. 61.33 FEET) HEALED FACE  
-- 7 FOOT TALL SNAG WITH VISIBLE SCRIBING BEARS S6 1/4"W. 39.6 FEET AS PER RECORD  
-- 20" WHITE FIR BEARS S21 1/4"E. 129.1 FEET (RECORD FROM TAG S18 1/2"E) WELL HEALED FACE  
CORNER LIES IN MOUND OF STONES APPROXIMATELY 36 FEET SOUTH OF DIRT ROAD AND APPROXIMATELY 108 FEET EAST OF ROCK ROAD.
- 11) CENTERSOUTH 1/16 CORNER FOR SECTION 26  
FOUND 5/8" IRON ROD FROM BLM ADMINISTRATIVE SURVEY FILED IN JACKSON COUNTY SURVEYORS OFFICE AS BLM-12.  
-- 24" SUGAR PINE BEARS S65 3/4"E. 11.8 FEET (RECORD S65 1/2"E. 12.2 FEET) HEALED FACE AND TAG WITH BEARING AND DISTANCE  
-- 24" SUGAR PINE BEARS N46 1/2"W. 28.9 FEET (RECORD N47 3/4"W. 29.0 FEET) HEALED FACE AND TAG WITH BEARING AND DISTANCE  
CORNER LIES ON TIMBER EDGE OF SOUTH SIDE.
- 12) SOUTH 1/4 CORNER OF SECTION 26  
FOUND 1978 BLM BRASS CAP.  
-- 24" WHITE FIR BEARS N5"W. 3.30 FEET AS PER RECORD HEALED FACE AND BLM TAG  
-- 11" WHITE FIR BEARS S46 1/2"W. 32.5 FEET (RECORD S45"W. 32.34 FEET) HEALED FACE AND TAG  
-- 29" FIR STUMP BEARS S65 3/4"W. 16.5 FEET (RECORD S66"W. 15.18 FEET)  
CORNER LIES ON NORTH FACING SLOPE APPROXIMATELY 7 CHAINS EAST OF MAIN ROAD.