

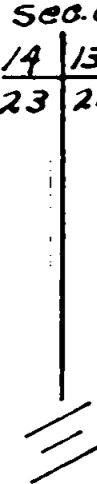
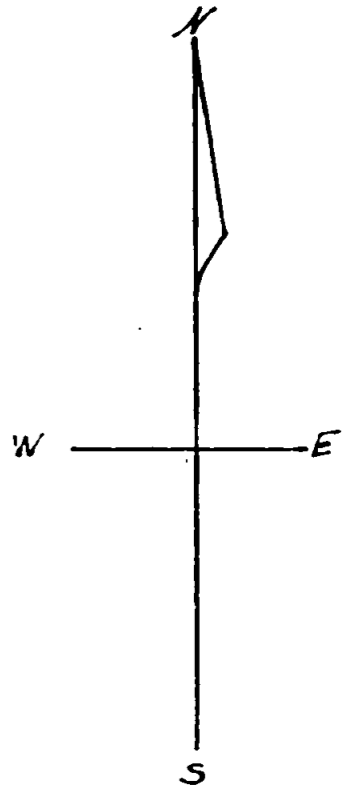
Robert & Beulah Humphrey, Property  
Sec. 24 T35S R2W W.M.

Scale 1" = 100 FT

March 1961

o Iron Pin

Sec. Cor.  
14 13 1" pipe  
23 24



100' WC. Pin

589°56'20" E  
735.82'

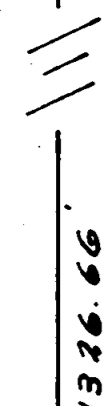
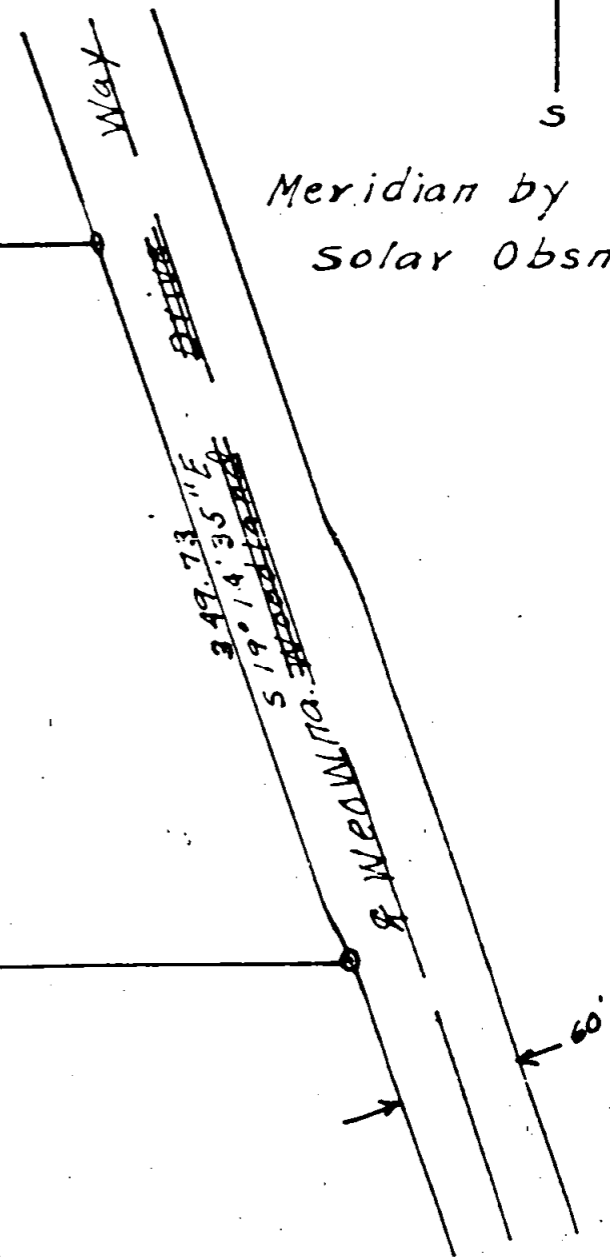
Meridian by  
Solar Obsn.

N0°05'45" E  
330.00'

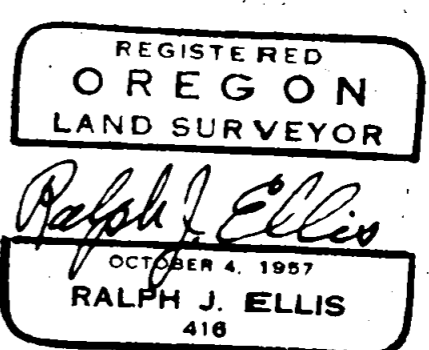
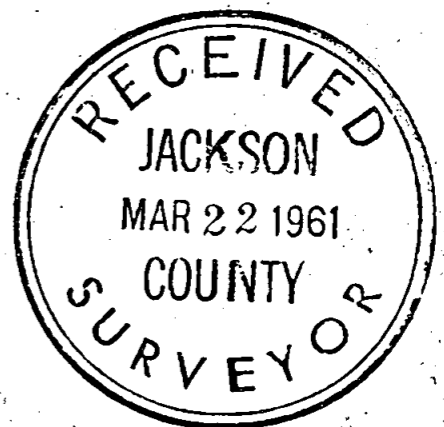
Lot 3  
6.1 Acres

100' WC. Pin

851.69'  
N89°56'20" W



1326.66'



23 24  
25 26  
Sec. Cor.  
2" pipe  
2 BTs

589°56'45" E

24 19  
26 20  
Sec. Cor.  
3/4" pipe  
2 BTs

Survey Narrative to Comply with Paragraph 209.250  
Oregon Revised Statutes

For: Robert and Beulah Humphrey  
Route 2, Box 583 H  
Central Point, Oregon

Purpose: To locate Lot 3 in a tract of land bound on the West by the section line 23/24, on the North by lot 4, on the East by the westerly right of way of Weowna Way and on the South by the approximate North line of the SW 1/4 of SW 1/4 section 24.

Procedure: I did not definitely establish the North line of the SW 1/4 of SW 1/4 section 24 (see survey No. 1646, Robert Humphrey survey of lot 1), for details of the survey to the point of establishing the corners of this lot.

I had previously set the approximate S 1/16 corner on the section line 23/24 and the approximate SW 1/16 corner of section 24. I then established a straight line between the two corners, turned the angle at the S 1/16 corner to this line to establish a bearing, and set a Witness pin 10.0 feet more or less East of the S 1/16 corner on this line, and intersected the westerly right of way of Weowna Way with this line to establish the SE corner of the lot. I had previously established the centerline and right of ways of Weowna Way as directed by Mr. Humphrey. The NW corner was set 330.0 feet along the section line.

I then turned the required angle at the NW corner to give me a parallel line with the south line and ran this line to an intersection with the right of way of Weowna Way. I had previously set a corner 330.0 feet North of the approximate SW 1/16 corner of 24 on the line between the W 1/16 corner section line  $\frac{13}{24}$  and the W 1/16 corner section line  $\frac{24}{25}$ . This gave me a check on the North line of this property for both bearing and distance, as I had previously computed the total length of the line and the bearing.

REGISTERED  
OREGON  
LAND SURVEYOR

*Ralph J. Ellis*  
OCTOBER 4, 1957  
RALPH J. ELLIS  
416

