

GRIFFIN PARK SUBDIVISION

LOCATED IN SEC. 11, T.38 S., R. 2 W., W.M.

CORNER OF
E.S.E. DLG. 46

DEDICATION

KNOWN ALL MEN BY THESE PRESENTS

THAT WE GORDON P. KERSHAW AND AUGUSTA H. KERSHAW ARE THE OWNERS IN FEE SIMPLE OF LANDS HEREON DESCRIBED AND THAT WE HAVE SUBDIVIDED THE SAME INTO LOTS, BLOCKS AND STREETS AS SHOWN HEREON AND THE NUMBER AND SIZE OF LOTS AND THE LENGTH OF ALL LINES ARE PLAINLY SET FORTH, AND THAT THIS PLAT IS A CORRECT REPRESENTATION OF THE SAID SUBDIVISION, AND WE DO HEREBY DEDICATE TO THE PUBLIC FOR PUBLIC USE ALL STREETS, AS SHOWN HEREON AND WE DO HEREBY DESIGNATE SAID SUBDIVISION AS GRIFFIN PARK SUBDIVISION.

IN WITNESS WHEREOF WE SET OUR HANDS AND SEALS THIS 14 DAY OF February 1961
Gordon P. Kershaw Augusta H. Kershaw
STATE OF OREGON)
COUNTY OF JACKSON) ss

February 14 AD. 1961
PERSONALLY APPEARED THE ABOVE NAMED GORDON P. KERSHAW AND AUGUSTA H. KERSHAW AND ACKNOWLEDGED THE FOREGOING INSTRUMENT TO BE THEIR VOLUNTARY ACT AND DEED BEFORE ME.

Mydab Neil
NOTARY PUBLIC FOR OREGON
MY COMMISSION EXPIRES THE 23rd DAY OF November 1964

EXAMINED AND APPROVED BY JACKSON COUNTY PLANNING COMMISSION IN THIS REGULAR SESSION ON 8th DAY OF March 1961

ATTEST: Daniel B. Roney SECRETARY W. H. Hays PRESIDENT

EXAMINED AND APPROVED BY TALENT IRRIGATION DISTRICT IN REGULAR SESSION ON THIS 3rd DAY OF JANUARY 1961

ATTEST: W. H. Hays SECRETARY Harmon Moore PRESIDENT

EXAMINED AND APPROVED THIS 28th DAY OF Feb. 1961
Roy Schumacher
COUNTY ASSESSOR

ALL TAXES PAID IN FULL TO DATE THIS 28th DAY OF February 1961
Joseph D. White
COUNTY SHERIFF

EXAMINED AND RECOMMENDED FOR APPROVAL BY THE COUNTY COURT THIS THE 7th DAY OF MARCH 1961

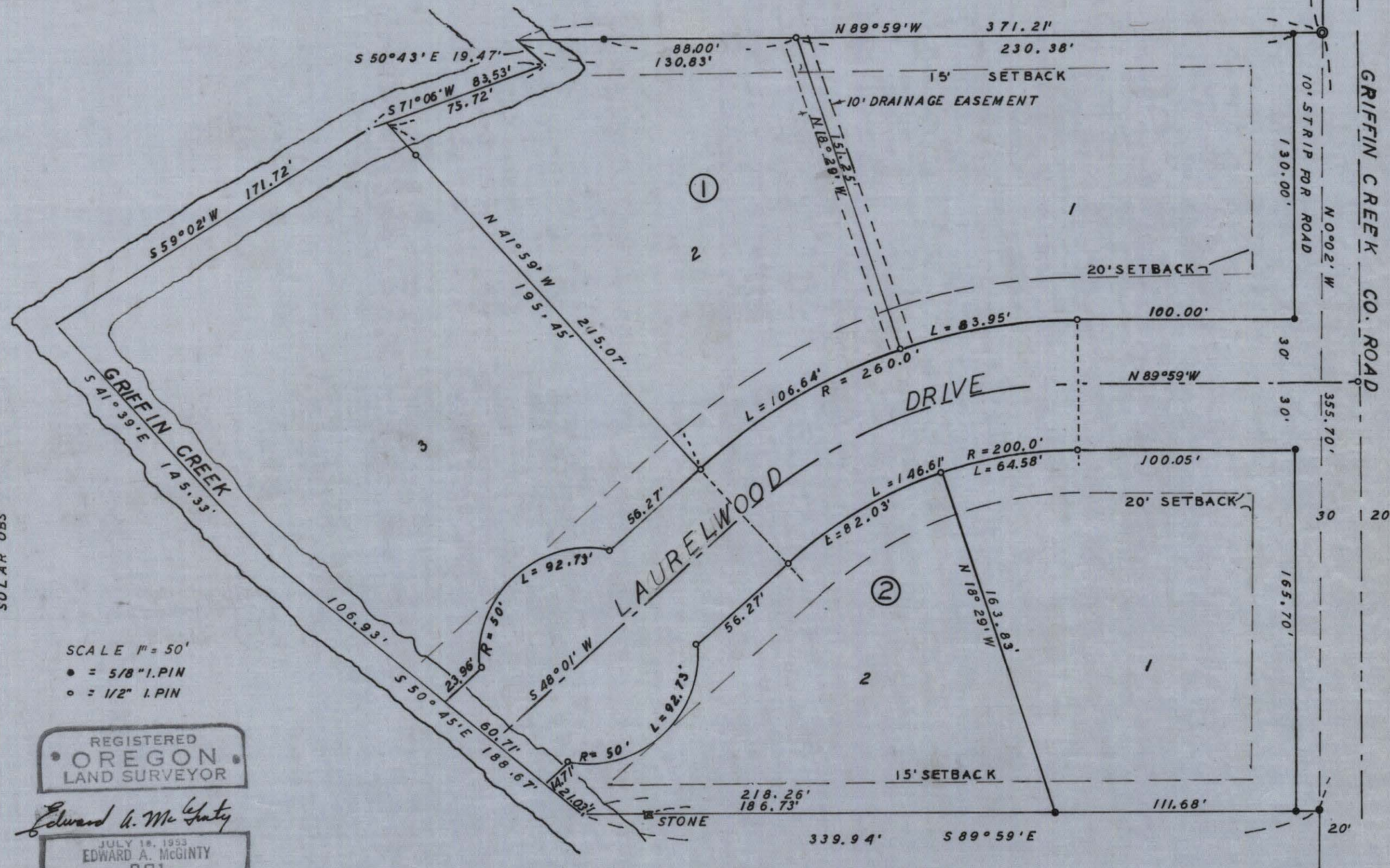
Ed E. Boyden
COUNTY SURVEYOR

FOR THE ORDER OF THE COUNTY COURT APPROVING THIS PLAT SEE VOLUME 53 PAGE 432, OF COUNTY COMMISSIONER'S JOURNAL OF PROCEEDINGS.

Emmadel
COUNTY CLERK

FILES FOR RECORD THIS THE 13th DAY OF March 1961 AT 2:01 O'CLOCK P. M. AND RECORDED IN VOLUME 8 OF PLATS AT PAGE 45 OF RECORDS OF JACKSON COUNTY

Emmadel
COUNTY CLERK



SCALE 1" = 50'
• = 5/8" I.P.I.N
○ = 1/2" I.P.I.N

REGISTERED OREGON LAND SURVEYOR

JULY 18, 1953
EDWARD A. MCGINTY
301

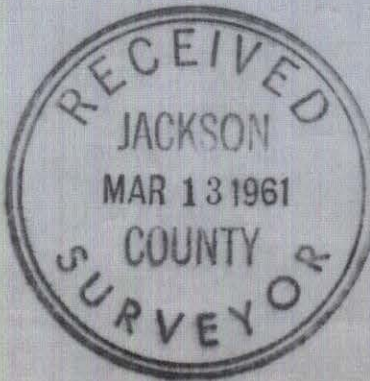
SURVEYORS CERTIFICATE

STATE OF OREGON)
COUNTY OF JACKSON) ss
I, EDWARD A. MCGINTY A. DULY REGISTERED SURVEYOR OF STATE OF OREGON, BEING FIRST DULY SWORN DO HEREBY CERTIFY THAT I HAVE CORRECTLY SURVEYED AND MARKED WITH PROPER MONUMENTS AS PROVIDED BY LAW THE TRACT OF LAND HEREON SHOWN AND SAID PLAT IS A CORRECT REPRESENTATION OF THE SAME AND THE FOLLOWING IS AN ACCURATE DESCRIPTION OF THE BOUNDARY LINES:
COMMENCING AT EAST SOUTH EAST DLG. 46, T.38 S., R.2 W., W.M., JACKSON COUNTY, OREGON; THENCE S.89°59'E., 103.25 FEET; THENCE S.0°02' E., 674.39 FEET TO A 2" IRON PIPE BEING THE INITIAL POINT; THENCE N.89°59'W., 371.21 FEET; THENCE S.50°43'E., 19.47 FEET; THENCE S.71°06'W., 83.53 FEET; THENCE S.59°02'W., 171.72 FEET; THENCE S.41°39'E., 145.33 FEET; THENCE S.50°45'E., 188.67 FEET; THENCE S.89°59'E., 339.94 FEET; THENCE N.0°02'W., 355.70 FEET TO THE POINT OF BEGINNING.

SUBSCRIBED AND SWORN BEFORE ME THIS 10th DAY OF November 1960
Mydab Neil
NOTARY PUBLIC FOR OREGON
MY COMMISSION EXPIRES THE 23rd DAY OF November 1960
Edward A. McGinty
SURVEYOR

I HEREBY CERTIFY THAT THIS TRACING IS AN EXACT COPY OF THE ORIGINAL PLAT FILED WITH THE COUNTY CLERK

Edward A. McGinty
SURVEYOR



SUBJECT: Griffin Park Sub-division.

Compliance with Jackson County Sub-division Ordinance 5.2.3.

Bearing: Solar observation (this varies about 01' from the County Road survey and Survey No. 1469.

Griffin Creek Road was determined from a County Road spike approx. 12 inches deep at P.I. to the north and a 3/4 inch iron pin at P.I. to the south (see survey No. 1469)

The south line was determined from a sandstone found along the south line and holding record angle at the County road. Record angle was determined from a description by the Deputy County surveyor and also the center line of the creek.

Found a 1 1/2 inch Gal. iron pipe at the E. S. E. corner of DLC No. 46.



Edward A. McGinty

