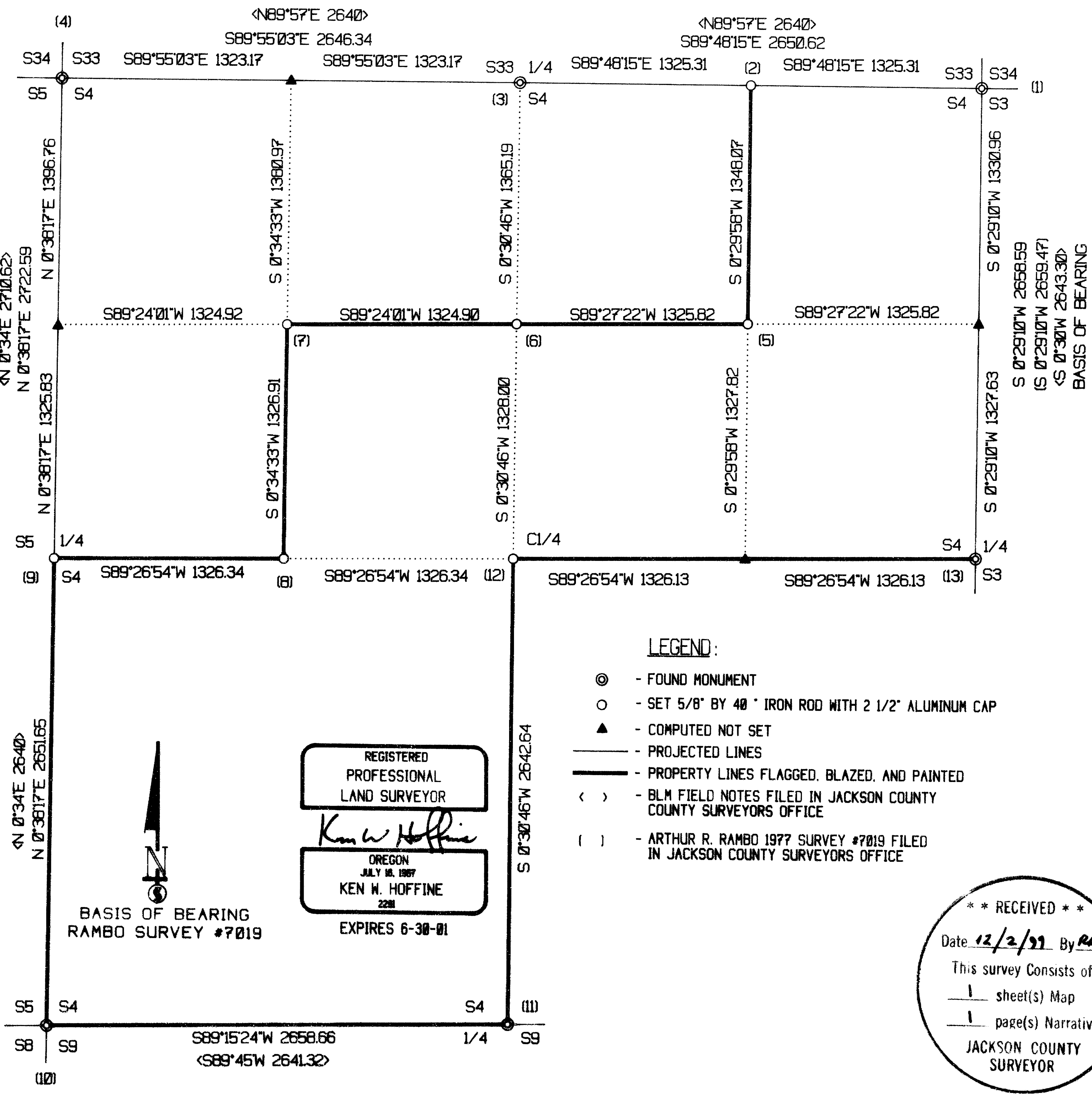


LONE ROCK TIMBER CO.

PO BOX 1127 ROSEBURG OREGON 97470 DATE: NOV. 1999
SECTION 4, TOWNSHIP 39 SOUTH, RANGE 3 EAST, W.M. JACKSON COUNTY, OREGON
LONE ROCK TIMBER TRACT: M 39-3E-4 SCALE: 1" = 600'

CORNER INFORMATION:

- THE NORTHEAST SECTION CORNER FOR SECTION 4
CORNER IS A 1961 JACKSON COUNTY BCIP IN EAST/WEST FENCE LINE
-- 16" WHITE FIR BEARS S25 1/2"E, 7.2 FEET (RECORD S23"E, 7.2 FEET) WELL HEALED FACE
-- 24" WHITE FIR BEARS S16 3/4"W, 30.5 FEET (RECORD S17 1/2"W, 29.4 FEET) WELL HEALED FACE
-- 20" WHITE FIR BEARS N56 3/4"W, 9.2 FEET (RECORD N55 1/2"W, 9.2 FEET) WELL HEALED FACE
-- 20" WHITE FIR SNAG BEARS N66 1/4"E, 21.9 FEET (RECORD N73"E, 22.0 FEET) WELL HEALED FACE
-- 20" WHITE FIR BEARS S57 1/4"E, 8.2 FEET (RECORDS S55"E, 8.0 FEET) CHOPPED OUT FACE AND BLM TAG
-- RECORD 16" DOUGLAS FIR SNAG BEARING S36"W, 20.6 FEET IS NOW DOWN AND ROTTEN WITH TAG VISIBLE
CORNER LIES IN EAST/WEST FENCE LINE APPROXIMATELY 70 FEET NORTH OF OLD DIRT ROAD.
- THE EAST 1/16 CORNER BETWEEN SECTION 4 AND SECTION 33
SET 5/8" X 40" IRON ROD WITH 2 1/2" ALUMINUM CAP MARKED LONE ROCK TIMBER T38S R3E S33 E1/16 T39S R3E S4 1999 PLS 2291.
-- SET 5/8" IRON ROD WITH YELLOW PLASTIC CAP MARKED LONE ROCK TIMBER PLS 2291 BEARS N18 3/4"W, 10.1 FEET
IN NORTH RUNNING FENCE LINE
-- SET 5/8" IRON ROD WITH YELLOW PLASTIC CAP MARKED LONE ROCK TIMBER PLS 2291 BEARS S45 3/4"E, 9.4 FEET
IN EAST RUNNING FENCE LINE
-- FENCE CORNER BEARS S28"W, 6.5 FEET
CORNER LIES ON OPEN FIELD NORTHEAST OF FENCE CORNER.



- LEGEND:**
- ⊙ - FOUND MONUMENT
 - - SET 5/8" BY 40" IRON ROD WITH 2 1/2" ALUMINUM CAP
 - ▲ - COMPUTED NOT SET
 - - PROJECTED LINES
 - - PROPERTY LINES FLAGGED, BLAZED, AND PAINTED
 - < > - BLM FIELD NOTES FILED IN JACKSON COUNTY SURVEYORS OFFICE
 - () - ARTHUR R. RAMBO 1977 SURVEY #7019 FILED IN JACKSON COUNTY SURVEYORS OFFICE

REGISTERED
PROFESSIONAL
LAND SURVEYOR
Ken W. Hoffine
OREGON
JULY 18, 1987
KEN W. HOFFINE
228
EXPIRES 6-30-01

BASIS OF BEARING
RAMBO SURVEY #7019

** RECEIVED **
Date: 12/2/99 By: RAE
This survey consists of:
1 sheet(s) Map
1 page(s) Narrative
JACKSON COUNTY
SURVEYOR

- THE NORTH 1/4 CORNER OF SECTION 4
FOUND 1976 JACKSON COUNTY BRASS CAP.
-- 18" WHITE FIR BEARS N39 3/4"W, 44.5 FEET (RECORD N39 1/4"W, 44.68 FEET) SOME SCRIBING VISIBLE
-- 28" WHITE FIR BEARS S20 1/2"E, 17.0 FEET (RECORD S20"E, 17.35 FEET) WELL HEALED FACE
-- SLABBED OFF WHITE FIR BEARS N50 1/2 W, 11.3 FEET (RECORD N50 W, 11.88 FEET) BLM TAG
CORNER SITS IN MOUND OF STONES APPROXIMATELY 50 FEET WEST OF DIRT ROAD.
- THE NORTHWEST SECTION CORNER OF SECTION 4
FOUND 1978 BLM BRASS CAP 1.0 FEET ABOVE GROUND LEVEL.
-- 21" DOUGLAS FIR BEARS S45 3/4"W, 40.5 FEET (RECORD S46"E, 40.59 FEET) WELL HEALED FACE AND BLM TAG
-- 23" WHITE FIR BEARS N63 3/4"E, 37.2 FEET (RECORD N64"E, 37.29 FEET) HEALED FACE AND BLM TAG
-- 42" DOUGLAS FIR BEARS S50 1/4"W, 4.0 FEET (RECORD S50"W, 3.3 FEET) SAWED OUT FACE AND BLM TAG
-- 11" DOUGLAS FIR BEARS N19"W, 29.1 FEET (RECORD N17 1/2"W, 29.37 FEET) WELL HEALED FACE AND BLM TAG
CORNER LIES APPROX. 1 FOOT SOUTH OF FENCE CORNER, FENCE RUNS NORTH AND WEST.
- THE NORTHEAST 1/16 CORNER OF SECTION 4
SET 5/8" X 40" IRON ROD WITH 2 1/2" ALUMINUM CAP MARKED LONE ROCK TIMBER NE 1/16 S4 1999 PLS 2291.
-- 18" WHITE FIR BEARS N16"W, 26.5 FEET, WE SCRIBE NE 1/16 S4 B.T. AND TAG TREE
-- 14" WHITE FIR BEARS S41"E, 33.5 FEET, WE SCRIBE NE 1/16 S4 B.T. AND TAG TREE
CORNER LIES IN A MOUND OF STONES APPROXIMATELY 175 FEET EAST OF DIRT ROAD.
- THE CENTER NORTH 1/16 CORNER OF SECTION 5
SET 5/8" X 40" IRON ROD WITH 2 1/2" ALUMINUM CAP MARKED LONE ROCK TIMBER CN 1/16 S4 1999 PLS 2291.
-- 18" DOUGLAS FIR BEARS S67 1/4"E, 20.1 FEET, WE SCRIBE CN 1/16 S4 B.T. AND TAG TREE
-- 18" WHITE FIR BEARS N3 3/4"E, 27.2 FEET, WE SCRIBE CN 1/16 S4 B.T. AND TAG TREE
CORNER LIES IN MOUND OF STONES ON SOUTH FACING SLOPE.
- THE NORTHWEST 1/16 CORNER OF SECTION 4
SET 5/8" X 40" IRON ROD WITH 2 1/2" ALUMINUM CAP MARKED LONE ROCK TIMBER NW 1/16 S4 1999 PLS 2291.
-- 29" WHITE FIR BEARS N45 1/4"W, 54.3 FEET, WE SCRIBE NW 1/16 S4 B.T. AND TAG TREE
-- 16" WHITE FIR BEARS S38 1/4"E, 23.4 FEET, WE SCRIBE NW 1/16 S4 B.T. AND TAG TREE
CORNER LIES ON FLAT GROUND APPROX. 150 FEET EAST OF 38-3E-33.3 ROAD IN MOUND OF STONES.
- THE CENTERWEST 1/16 CORNER OF SECTION 4
SET 5/8" X 40" IRON ROD WITH 2 1/2" ALUMINUM CAP MARKED LONE ROCK TIMBER CW 1/16 S4 1999 PLS 2291.
-- 17" WHITE FIR BEARS N5 1/2"W, 26.5 FEET, WE SCRIBE CW 1/16 S4 B.T. AND TAG TREE
-- 14" WHITE FIR BEARS N58"E, 19.7 FEET, WE SCRIBED CW 1/16 S4 B.T. AND TAG TREE
CORNER LIES ON A SOUTH FACING SLOPE IN MOUND OF STONES.
- THE WEST 1/4 CORNER OF SECTION 4
SET 5/8" X 40" IRON ROD WITH 2 1/2" ALUMINUM CAP MARKED LONE ROCK TIMBER T39S R3E S5/S4 1/4 1999 PLS 2291.
-- 27" WHITE FIR BEARS S58 3/4"E, 66.8 FEET, WE SCRIBE 1/4 S4 B.T. AND TAG TREE
-- 15" WHITE FIR BEARS S12 1/2"W, 34.2 FEET, WE SCRIBE 1/4 S4 B.T. AND TAG TREE
-- 14" WHITE FIR BEARS N49 1/2"W, 28.1 FEET, WE SCRIBE 1/4 S4 B.T. AND TAG TREE
-- 13" WHITE FIR BEARS N17"E, 35.3 FEET, WE SCRIBE 1/4 S4 B.T. AND TAG TREE
CORNER LIES IN MOUND OF STONES ON UNMOVABLE ROCK APPROX. 150 FEET EAST OF POND AT END OF 38-3E-33.3 ROAD.
- THE SOUTHWEST SECTION CORNER FOR SECTION 4
FOUND 1972 JACKSON COUNTY BRASS CAP.
-- 35" WHITE FIR N63 1/4"W, 6.1 FEET (RECORD N58 1/2"W, 5.6 FEET) CHOPPED OUT FACE AND BLM TAG
-- 15" ROTTEN STUB 8 FOOT TALL BEARS S58 3/4"W, 19.8 FEET (RECORD S58 3/4"W, 19.8 FEET) VISIBLE SCRIBING AND TAG
-- 17" DOUGLAS FIR BEARS S35 1/4"W, 13.8 FEET (RECORD S37"W, 13.4 FEET) HEALED FACE AND JACKSON COUNTY TAG
-- 17" DOUGLAS FIR BEARS N20 1/2"E, 28.4 FEET (RECORD N22"E, 28.0 FEET) HEALED FACE AND JACKSON COUNTY TAG
-- 31" DOUGLAS FIR BEARS S55 3/4"E, 25.7 FEET (RECORD S54 1/2"E, 25.4 FEET) CHOPPED OUT FACE AND BLM TAG
CORNER LIES 50 FEET WEST OF AND 150 FEET SOUTH OF JEEP ROAD.
- THE SOUTH 1/4 CORNER OF SECTION 4
FOUND 1974 JACKSON COUNTY BRASS CAP.
-- 21" DOUGLAS FIR BEARS S84 3/4"W, 32.4 FEET (RECORD S86"W, 32.85 FEET) WELL HEALED DOUBLE BLAZE
-- 17" WHITE FIR BEARS N26 1/2"E, 35.1 FEET (RECORD N27 1/2"E, 35.21 FEET) WELL HEALED DOUBLE BLAZE
-- 32" WHITE FIR BEARS S31"E, 19.5 FEET (RECORD S31"E, 19.14 FEET) HEALED FACE AND CHOPPED OUT FACE
-- 1 1/2" IRON PIPE BEARS S55"W, 3.8 FEET (RECORD S55"W, 3.95 FEET)
CORNER LIES ON NORTHEAST SLOPE APPROX. 100 FEET EAST OF JEEP ROAD.
- THE CENTER 1/4 CORNER OF SECTION 4
SET 5/8" X 40" IRON ROD WITH 2 1/2" ALUMINUM CAP MARKED LONE ROCK TIMBER T39S R3E C 1/4 S4 1999 PLS 2291.
-- 31" DOUGLAS FIR BEARS N8 1/2"W, 40.1 FEET, WE SCRIBE C 1/4 S4 B.T. AND TAG TREE
-- 9" DOUGLAS FIR BEARS S47 3/4"W, 78.7 FEET, WE SCRIBE C 1/4 S4 B.T. AND TAG TREE
-- SET 5/8" X 40" IRON ROD WITH YELLOW PLASTIC CAP MARKED LONE ROCK TIMBER PLS 2291 BEARS N38 1/2"E, 13.9 FEET
-- SET 5/8" X 40" IRON ROD WITH YELLOW PLASTIC CAP MARKED LONE ROCK TIMBER PLS 2291 BEARS S25 1/4"E, 13.7 FEET
CORNER LIES IN MOUND OF STONES IN LARGE ROCKY FIELD.
- THE EAST 1/4 CORNER OF SECTION 4
FOUND 1967 JACKSON COUNTY BRASS CAP AT GROUND LEVEL.
-- 35" DOUGLAS FIR BEARS N67 3/4"E, 30.0 FEET (RECORD N66"E, 30.4 FEET) CHOPPED OUT FACE
-- 31" DOUGLAS FIR BEARS S37 3/4"E, 37.0 FEET (RECORD S40"E, 36.4 FEET) HEALED FACE
-- 41" CEDAR BEARS S76 1/4"W, 62.2 FEET (RECORD S74"W, 60.7 FEET) HEALED FACE
CORNER LIES APPROX. 300 FEET EAST OF JEEP ROAD.

Survey No. 16350

SURVEY NARRATIVE TO COMPLY WITH O.R.S. 209-250

SURVEY BY & FOR: LONE ROCK TIMBER CO.
P.O. BOX 1127
ROSEBURG, OREGON 97470

LOCATION: Section 4, Township 39 South, Range 3 East, WM,
Jackson County, Oregon.

PURPOSE: To establish and mark fractional sixteenth property lines for
timber cutting purposes and set corners as shown on the
attached map.

PROCEDURE: Ran a closed Random Traverse along lines to be marked and
through the controlling section corners. Offsets were computed
from the Traverse to the true line at all angle points and
intermediate side shot near line points in the Traverse. True
line was flagged, blazed, painted and tagged.

EQUIPMENT & PERSONNEL: This survey was done with a Nikon DTM 450 Total Station
with Gary Angiolet, Mark Dvorscak and Ignacio Roman
assisting me.

DATE: November 18, 1999

