

LONE ROCK TIMBER CO.

PO BOX 1127 ROSEBURG, OREGON 97470 SURVEY: M39-3E-2 TRACT
 SE1/4 SECTION 02, TOWNSHIP 39 SOUTH, RANGE 03 EAST, W.M. JACKSON COUNTY, OREGON
 SCALE 1" = 300' DATE: JULY 1999

LEGEND:

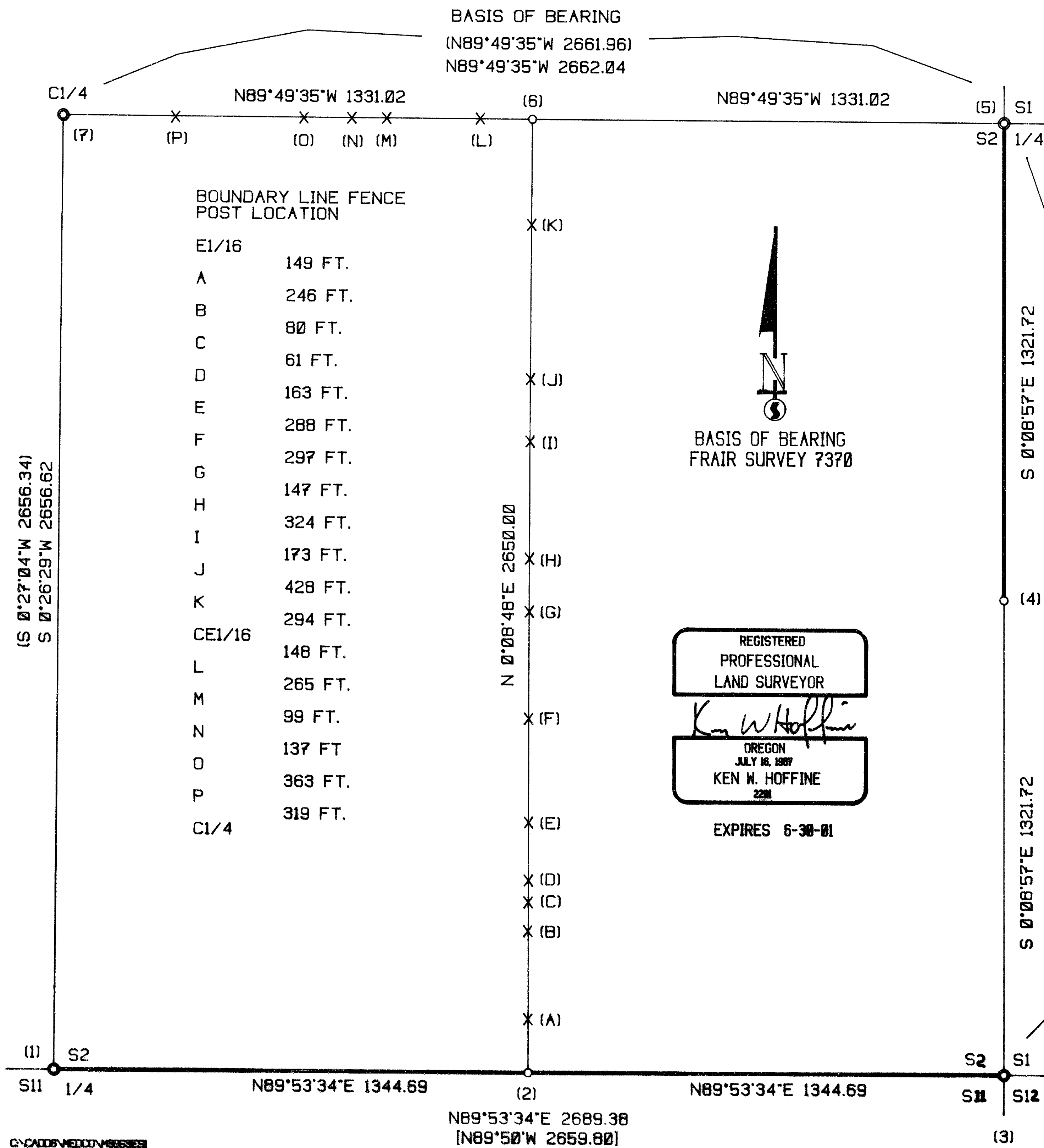
- ⊙ - FOUND MONUMENT
- - SET 5/8" BY 40" IRON ROD WITH PLASTIC CAP
- - PROJECTED LINES
- - BLAZED AND PAINTED LINES
- X - BOUNDARY LINE FENCE POST
- () - FRAIR 1978 SURVEY 7370 FILED IN JACKSON COUNTY SURVEYORS OFFICE
- (()) - FRIAR 1988 SURVEY 3565 FILED IN JACKSON COUNTY SURVEYORS OFFICE
- [] - GLO PLAT MAP

NARRATIVE

THIS SURVEY WAS CONDUCTED TO ESTABLISH PROPERTY CORNERS AND PROPERTY LINES FOR TIMBER CUTTING PURPOSES AND ESTABLISH LINES FOR POSSIBLE SUBDIVISION OF LONE ROCK'S PROPERTY INTO 120 ACRE PARCELS. WE INITIATED THIS SURVEY AT THE EAST 1/4 OF SECTION 2, A COUNTY BCIP SET FROM ORIGINAL EVIDENCE BEGINNING A RANDOM TRAVERSE ALONG AND NEAR PROPERTY LINES TO THE SOUTHEAST CORNER AND SOUTH QUARTER OF SECTION 2 WHICH ARE COUNTY BCIP'S SET FROM ORIGINAL EVIDENCE. WE ALSO RAN A TRAVERSE FROM A POINT NEAR THE EAST 1/16 NORTHERLY TO A POINT NEAR THE CENTER-EAST 1/16, THENCE WESTERLY TO FRIAR'S 1978 CENTER QUARTER CORNER. OUR SURVEY CALCULATIONS WERE WITHIN ACCEPTABLE LIMITS TO FRIAR'S SURVEY THEREFORE WE SET THE CORNERS AS SHOWN HEREON AND PUT FENCE POSTS ON THE EAST AND NORTH LINE OF THE W1/2 SE1/4 AS SHOWN HEREON. THIS SURVEY WAS DONE WITH A NIKON DTM 450 TOTAL STATION WITH GARY ANGIOLET, JERRY RAGON, IGNACIO ROMAN, AND PAT KELLY ASSISTING ME.

CORNER INFORMATION

- 1) SOUTH 1/4 CORNER OF SECTION 2
 FOUND 1967 COUNTY BRASS CAP 0.4 FEET ABOVE GROUND.
 -- 24" WHITE FIR SNAG BEARS N45°3/4 W, 42.7 FEET (RECORD N47°W, 42.2 FEET) CHOPPED OUT FACE AND BLM TAG
 -- 18" WHITE FIR SNAG BEARS N61 1/2°E, 16.0 FEET (RECORD N63°E, 15.5 FEET) WELL HEALED FACE AND WITNESS TAG
 -- 15" WHITE FIR BEARS S4°E, 27.0 FEET (RECORD S3°E, 26.8 FEET) WELL HEALED FACE AND WITNESS TAG
 CORNER LIES ON NORTHWEST EDGE OF LARGE ROCK ON EAST EDGE OF 80 FOOT ROUND FLAT RIDGETOP.
- 2) EAST 1/16 CORNER BETWEEN SECTION 2 AND SECTION 11
 SET 5/8" X 40" IRON ROD WITH 2 1/2" ALUMINUM CAP MARKED LONE ROCK TIMBER E 1/16 S2/S11 1999 PLS 2291 1.5 FEET ABOVE GROUND AND PILE MOUND OF STONES AROUND CAP.
 -- 18" WHITE FIR BEARS N63 3/4°W, 18.1 FEET, WE SCRIBE E 1/16 S2 B.T. AND TAG TREE
 -- 13" WHITE FIR BEARS S25 3/4°W, 30.9 FEET, WE SCRIBE E 1/16 S11 B.T. AND TAG TREE CORNER LIES ON RIDGETOP FLAT APPROXIMATELY 300 FEET NORTH OF TURN AROUND AT END OF GRAVEL ON THE 39-3E-111 ROAD.
- 3) SOUTHEAST SECTION CORNER OF SECTION 2
 FOUND COUNTY BRASS CAP 0.3 FEET ABOVE GROUND.
 -- 14" WHITE FIR SNAG BEARS S49 1/4°W, 12.6 FEET (RECORD S50°W, 12.5 FEET) VISIBLE SCRIBING IN CHOPPED OUT BLAZE AND B.T. TAG
 -- 32" WHITE FIR SNAG BEARS S65 1/2°W, 38.9 FEET (RECORD S65°W, 38.0 FEET) WELL HEALED FACE AND B.T. TAG
 -- 48" WHITE FIR BEARS S73 1/4°E, 25.2 FEET (RECORD S74°E, 23.3 FEET), WELL HEALED FACE AND B.T. TAG
 -- 30" WHITE FIR BEARS N29 1/2°E, 9.6 FEET (RECORD N32°E, 8.5 FEET) WELL HEALED FACE AND B.T. TAG
 -- 18" DOUGLAS FIR BEARS NORTH 19.2 FEET (RECORD N1°W, 19.0 FEET) WELL HEALED FACE CORNER LIES ON NORTH FACING SLOPE.
- 4) SOUTH 1/16 CORNER BETWEEN SECTION 1 AND SECTION 2
 SET 5/8" X 40" IRON ROD WITH 2 1/2" ALUMINUM CAP MARKED LONE ROCK TIMBER S1/16 S1/S2 1999 PLS 2291 0.5 FEET ABOVE GROUND.
 -- 18" WHITE FIR BEARS N45°W, 33.3 FEET, WE SCRIBE S1/16 S2 B.T. AND TAG TREE
 -- 11" WHITE FIR BEARS S13°E, 23.9 FEET, WE SCRIBE S1/16 S1 B.T. AND TAG TREE CORNER LIES APPROXIMATELY 100 FEET EAST OF SMALL DRAW. WOODEN POST FOR APPROXIMATELY 1/16 CORNER BEARS NORTHWEST 0.8 FEET.
- 5) EAST 1/4 CORNER OF SECTION 2
 FOUND COUNTY BRASS CAP AT GROUND LEVEL.
 -- 12" WHITE FIR BEARS S69 1/2°W, 14.5 FEET (RECORD S70 1/2°W, 14.4 FEET) WELL HEALED FACE B.T. TAG BUT NO INFORMATION ON TAG
 -- 14" WHITE FIR BEARS N10°W, 19.3 FEET (RECORD N10°W, 19.2 FEET) WELL HEALED FACE CORNER LIES ON NORTH EDGE OF MAIN RIDGETOP. BLM CLEARCUT TO THE EAST
- 6) CENTEREAST 1/16 CORNER FOR SECTION 2
 SET 5/8" X 40" IRON ROD WITH 2 1/2" ALUMINUM CAP MARKED LONE ROCK TIMBER CE 1/16 S2 1999 PLS 2291.
 -- 14" DOUGLAS FIR BEARS N58 3/4°W, 9.2 FEET, WE SCRIBE CE 1/16 S2 B.T. AND TAG TREE
 -- 14" WHITE FIR BEARS N62 1/2°E, 59.4 FEET, WE SCRIBE CE 1/16 S2 B.T. AND TAG TREE CORNER LIES APPROXIMATELY 30 FEET EAST OF SKID ROAD AND 200 FEET NORTH OF MAIN DIRT HALL ROAD.
- 7) CENTER 1/4 CORNER FOR SECTION 2
 FOUND 1" IRON PIPE WITH PLASTIC CAP INSIDE IN MOUND OF STONES. CORNER IS BENT TO THE NORTH.
 -- 16" WHITE FIR BEARS S44 3/4°W, 48.2 FEET (RECORD S 45°20'W, 48.0 FEET) WELL HEALED FACE AND B.T. TAG
 -- 17" DOUGLAS FIR BEARS S69 1/2°E, 45.6 FEET (RECORD S69°45'E, 45.4 FEET) WELL HEALED FACE AND B.T. TAG
 CORNER IS APPROXIMATELY 7 FEET WEST OF WEST EDGE OF DIRT ROAD AND APPROXIMATELY 200 FEET EAST OF MAIN HOWARD PRAIRIE / HYATT LAKE HIGHWAY.



**** RECEIVED ****
 Date 7-28-99 By [Signature]
 This survey consists of:
 — sheet(s) Map
 — page(s) Narrative
 JACKSON COUNTY SURVEYOR