

MAP of SURVEY

Situated in

Donation Land Claim No. 38 &
the Northwest Quarter of Section 5,
Township 39 South, Range 1 East of the
Willamette Base & Meridian, Jackson County, Oregon.

Survey Narrative to comply with O.R.S. 209.250
Oregon Revised Statutes

SURVEYOR

CITY of ASHLAND
Engineering Division
20 East Main Street
Ashland, Oregon, 97520
SCALE: 1" = 10'
Basis of Bearing:

MARCH 20, 1999
Everett L. Swain, P.L.S.
Assistant City Surveyor
Field Crew Assistants: Reid Pallady, Eng. Tech. II
and Jeremy Lowe, Eng. Tech. I
Telephone: (541) 488-5347
True Meridian at the
N-S Centerline Sec. 5
(derived from Jackson County Surveyor's
(N.D.A.A. net established in 1968)

City of Ashland

20 East Main St.
Ashland, Oregon 97520

Field investigation of Blossom View Estates, a Planned Community in the City of Ashland and the Northwest Quarter of Section 5 Township 39 South, Range 1 East of the Willamette Meridian, revealed that the monument for the Southwest Corner of Donation Land Claim 38, T.39S, R.1E, Jackson County had been disturbed in construction and reset some 2 ft. out of position by parties unknown. Also found were three (3) of four reference monuments in good condition. The fourth reference monument appeared to have been damaged in construction. These reference monuments were previously established by the City of Ashland Survey Crew.

The Reference monuments and location of the DLC corner were coordinated and stored in a C&G data collector. A hub tack was set at the edge of new concrete gutter for a temporary control point and measurements taken to the three good reference monuments using a Wild T-2 theodolite and Wild Invar Subtense Bar, both in good repair. Utilizing a distance resection with these measurements yielded very good results. The location of the temporary control point was also stored, for use in replacing the DLC monument.

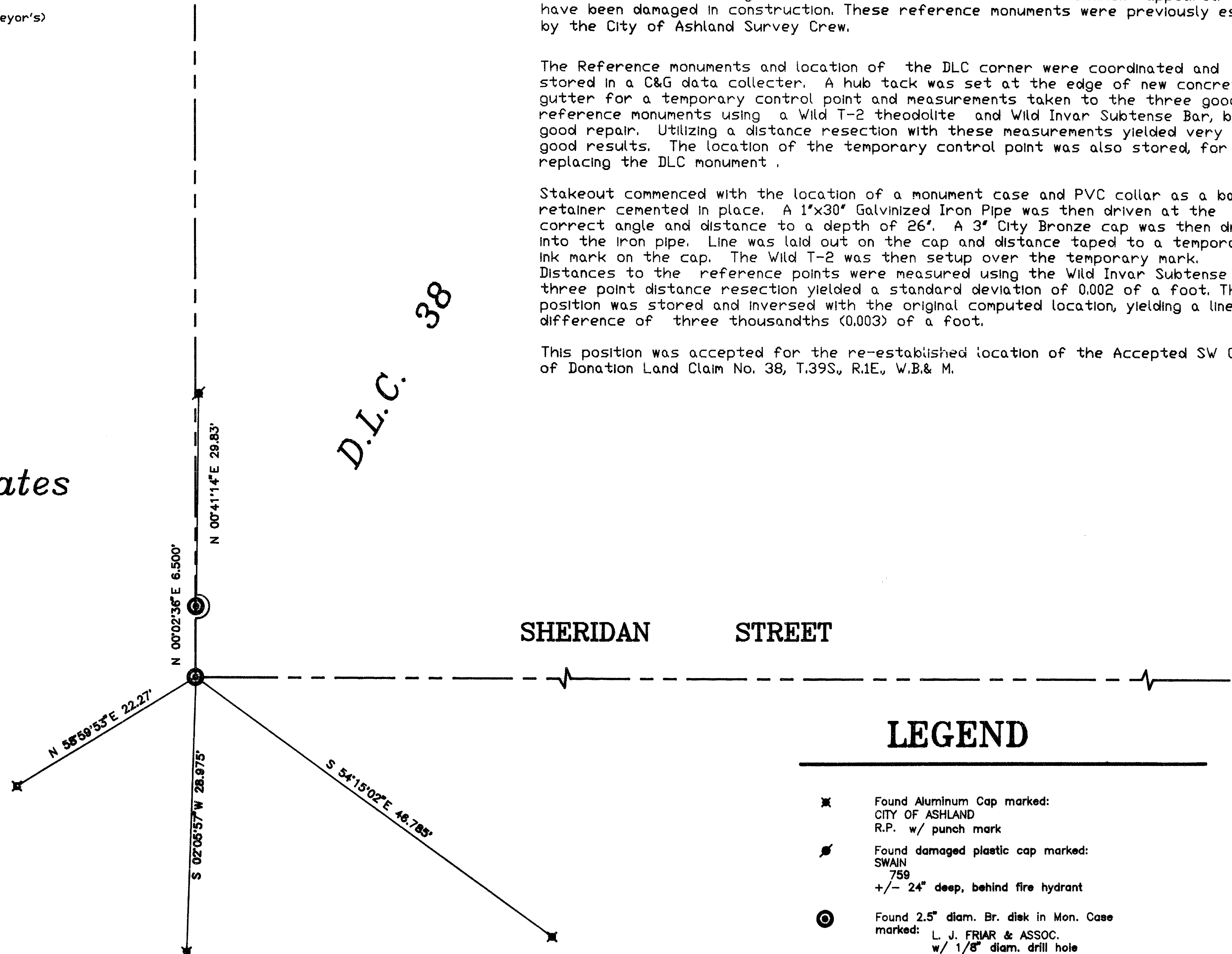
Stakeout commenced with the location of a monument case and PVC collar as a bank retainer cemented in place. A 1"x30" Galvanized Iron Pipe was then driven at the correct angle and distance to a depth of 26". A 3" City Bronze cap was then driven into the iron pipe. Line was laid out on the cap and distance taped to a temporary ink mark on the cap. The Wild T-2 was then setup over the temporary mark. Distances to the reference points were measured using the Wild Invar Subtense bar. A three point distance resection yielded a standard deviation of 0.002 of a foot. This position was stored and inverted with the original computed location, yielding a linear difference of three thousandths (0.003) of a foot.

This position was accepted for the re-established location of the Accepted SW Corner of Donation Land Claim No. 38, T.39S, R.1E, W.B.& M.

Blossom View Estates

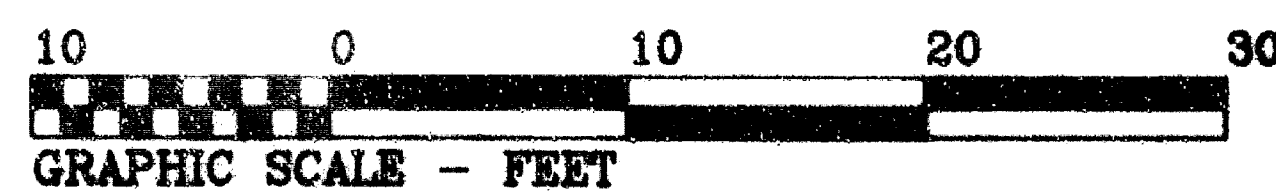
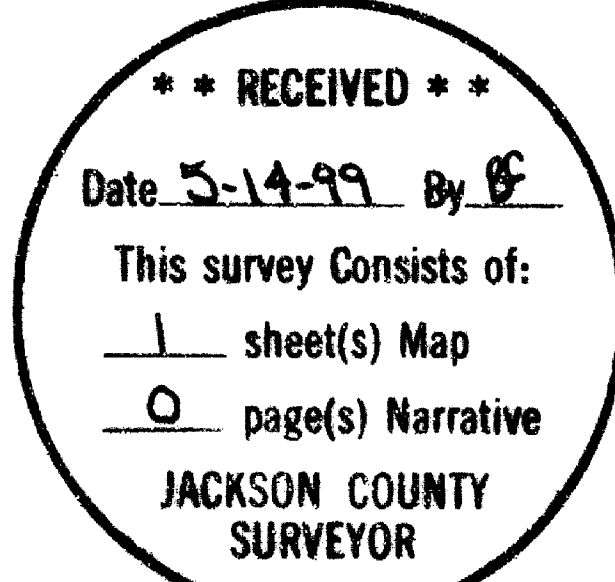
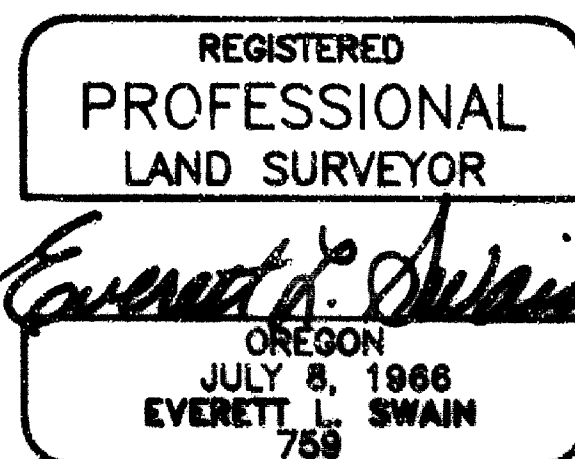
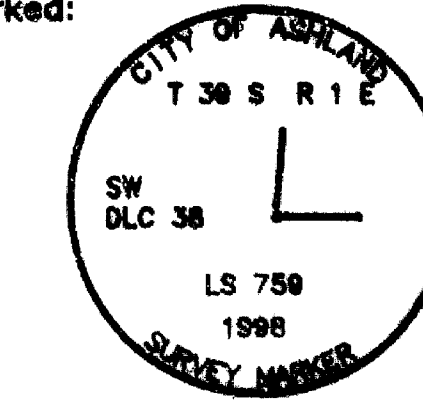
D.L.C. 38

SHERIDAN STREET



LEGEND

- ✕ Found Aluminum Cap marked:
CITY OF ASHLAND
R.P. w/ punch mark
- ✕ Found damaged plastic cap marked:
SWAIN
759
+/- 24" deep, behind fire hydrant
- ⊙ Found 2.5" diam. Br. diek in Mon. Case
marked:
L. J. FRIAR & ASSOC.
w/ 1/8" diam. drill hole
- ⊙ Set 1"x30" Galvanized Iron Pipe
w/ 3" diam. bronze diek in Monu. Case
marked:



T 39 S R 1 E 5BD

Surveyor's Registration
Renewal Date: June 30, 2000