

# MAP OF SURVEY

## LOCATED IN THE NORTHWEST QUARTER OF SECTION 6, TOWNSHIP 35 SOUTH, RANGE 2 EAST, WILLAMETTE MERIDIAN, JACKSON COUNTY, OREGON

### SURVEY NARRATIVE

**PURPOSE:**

TO SET THE SOUTHEAST CORNER OF GOVERNMENT LOT 4 OF SECTION 6 AND TO MARK THE EAST LINE OF SAID GOVERNMENT LOT 4 AS SHOWN ON THIS PLAT.

**PROCEDURE:**

A SEARCH OF RECORDS REVEALED THAT THE WEST ONE-SIXTEENTH CORNER COMMON TO S.31, T.34S., R.2E. AND S. 6, T. 35 S. R. 2 E. HAD BEEN ESTABLISHED ON SURVEY NUMBER 6333. THE CENTERWEST ONE-SIXTEENTH CORNER OF SECTION 6 HAD BEEN ESTABLISHED ON SURVEY NUMBER 7839. A SEARCH IN THE FIELD REVEALED THAT THE MONUMENT FOR THE CENTERWEST ONE-SIXTEENTH CORNER WAS GONE. THE CORNER WAS RE-ESTABLISHED FROM THE BEARING TREES MARKED ON SURVEY NUMBER 7839. A TRAVERSE WAS RUN FROM THE CENTERWEST ONE-SIXTEENTH CORNER OF SECTION 6 TYING TO THE WEST ONE-SIXTEENTH CORNER COMMON TO SECTION 31 AND SECTION 6. THE NORTHWEST ONE-SIXTEENTH CORNER OF SECTION 6 WAS THEN CALCULATED AND SET BY PROPORTIONATE MEASUREMENT. THE EAST LINE OF GOVERNMENT LOT 4 WAS THEN MARKED.

**MONUMENTS SET:**

MEASUREMENTS TO THE BEARING TREE ARE TO THE CENTER OF TREE AT BASE.  
BEARING TREES HAVE A BRASS WASHER MARKED PLS 1086 NAILED TO LOWER FACE.

CENTERWEST ONE-SIXTEENTH CORNER SECTION 6.

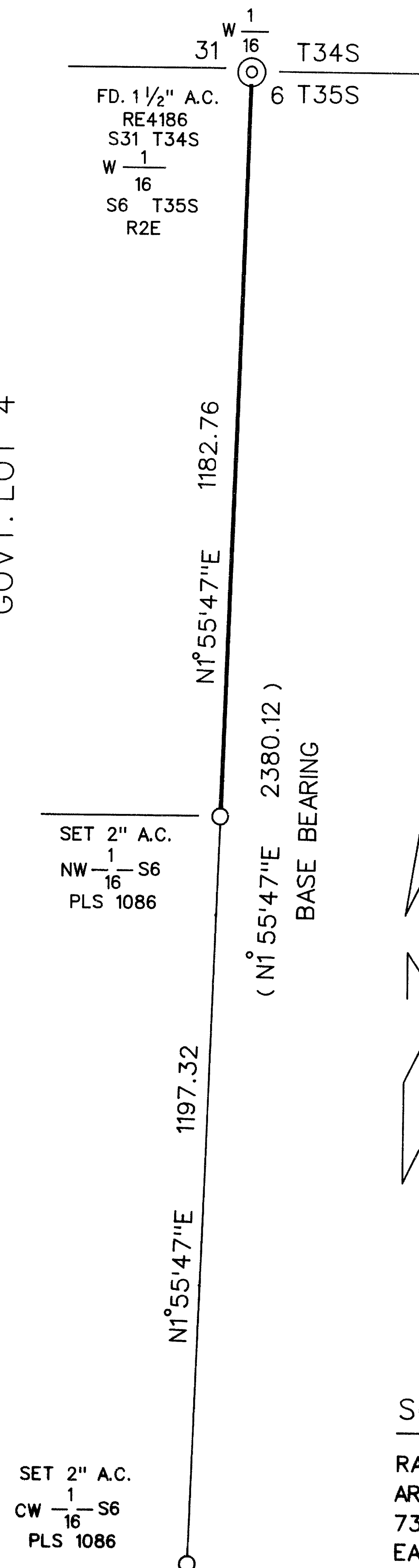
- FROM WHICH:
- A12" DIAMETER PONDEROSA PINE BEARS S77°06'E, 84.96 FEET HEALED UPPER FACE, IRON MARKS IN PARTIALLY HEALED LOWER FACE.
  - A12" DIAMETER PONDEROSA PINE BEARS N64°57'E, 71.77 FEET (RECORD N65 09'E, 71.77 FEET) IRON MARKS IN PARTIALLY HEALED UPPER FACE, HEALED LOWER FACE.

NORTHWEST ONE-SIXTEENTH CORNER SECTION 6.

- FROM WHICH I MARK:
- A 7" DIAMETER OAK BEARS S9°20'E, 6.89 FEET MARKED NW1/16S6 IN UPPER FACE, BT IN LOWER FACE.
  - A 6" DIAMETER OAK BEARS N52°43'E, 13.81 FEET MARKED NW1/16S6 IN UPPER FACE, BT IN LOWER FACE.

TAX LOT No. 35-2E-1100

GOVT. LOT 4



SURVEY FOR

DAN MILLER  
701 SOUTH OAKDALE  
MEDFORD, OREGON 97501

LEGEND

- ⊙ FOUND 1/2" ALUMINUM CAP SET SURVEY NUMBER 6333
- SET 2" ALUMINUM CAP ON 5/8" IRON PIN
- ( ) RECORD DATA SURVEY NUMBER 7839

— LINE MARKED AND POSTED THIS SURVEY

BASIS OF BEARING

SURVEY NUMBER 7839

SCALE

1" = 200'

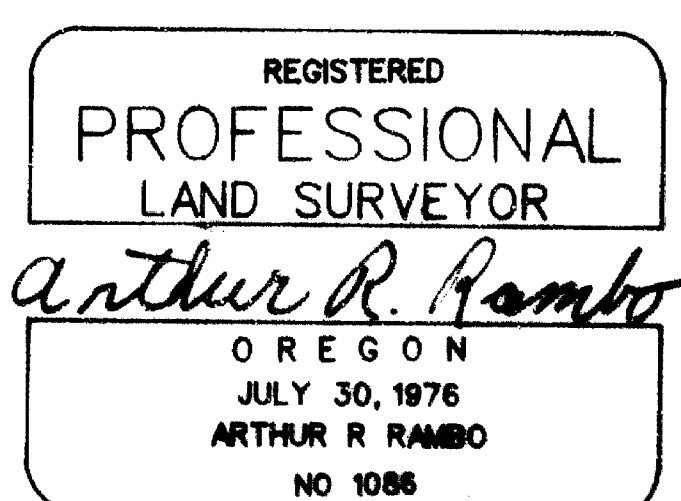
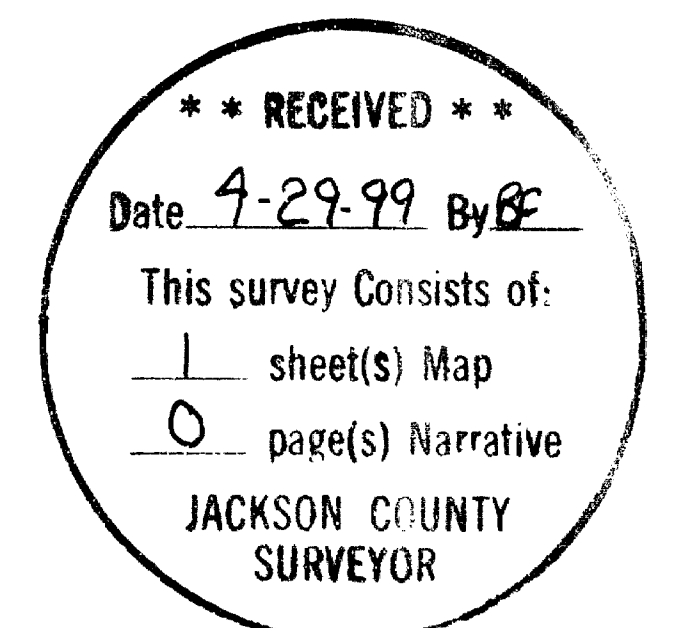
DATE

APRIL 28, 1999



SURVEY BY

RAMBO SURVEYING  
ARTHUR R. RAMBO  
735 VISTA PARK DRIVE  
EAGLE POINT, OREGON 97524



EXPIRES DECEMBER 31, 2000