

LONE ROCK TIMBER CO.

PO BOX 1127 ROSEBURG OREGON 97470 DATE: MARCH 1999
 SECTION 24, TOWNSHIP 34 SOUTH, RANGE 3 EAST, V.A. JACKSON COUNTY, OREGON
 LONE ROCK TIMBER TRACT - A-34-3E-24 SCALE: 1" = 500'

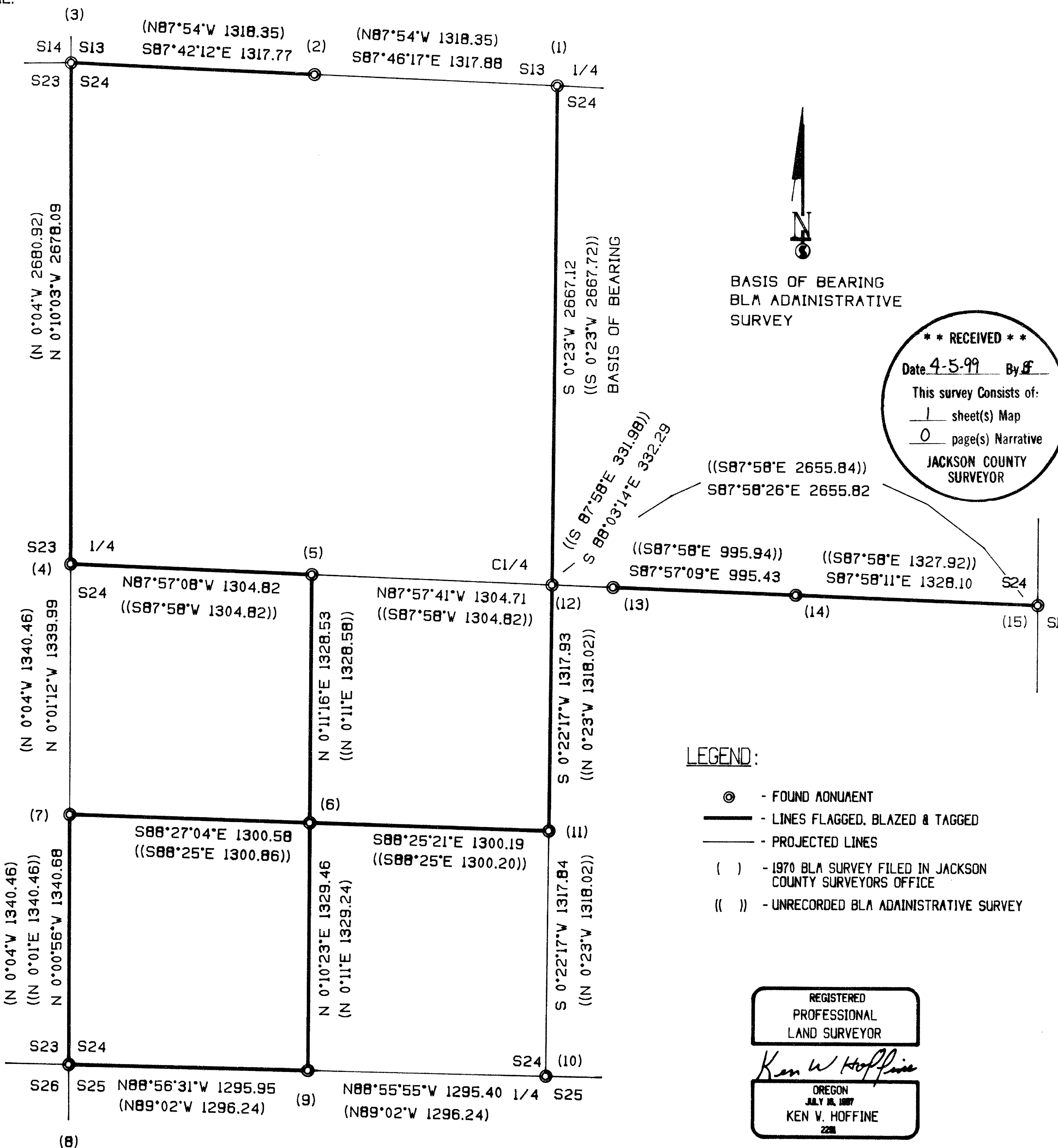
NARRATIVE

THIS SURVEY WAS CONDUCTED TO ESTABLISH PROPERTY CORNERS AND PROPERTY LINES FOR TIMBER CUTTING PURPOSES. WE INITIATED THIS SURVEY AT THE NW/4 OF SECTION 24 A BLA BCIP SET BY PROPORTION. WE BEGAN A RANDOM CLOSED TRAVERSE TO TIE IN THE EXTERIOR CORNERS OF SECTION 24 AS SHOWN HEREON. ALL BLA BCIP'S RENEVED FROM ORIGINAL OR SET BY PROPORTION IN A BLA CADASTRAL SURVEY IN 1970. WE FOUND DURING THE COURSE OF THIS SURVEY THE FOLLOWING 5/8" IRON RODS FOR THE INTERIOR CORNERS OF SECTION 24 AS SHOWN HEREON. THESE WERE SET BY AN INDEPENDENT CONTRACTOR FOR A BLA ADMINISTRATIVE SURVEY IN 1972. A MAP OF THE ADMIN. SURVEY WAS OBTAINED FROM THE MEDFORD BLA OFFICE. WE ACCEPTED THE BLA ADMINISTRATIVE CORNERS AS THEY ARE VERY CLOSE TO OUR CALCULATED POSITIONS AND HAVE BEEN USED FOR PROPERTY CORNERS FOR OVER 20 YEARS OF TIMBER MANAGEMENT ACTIVITIES BY ADJACENT OWNERS. WE MARKED PROPERTY LINES AS SHOWN HEREON. THIS SURVEY WAS DONE WITH A NIKON 450 TOTAL STATION WITH GARY ANGIOLET, JERRY RAGON AND PAT KELLY ASSISTING ME.

CORNER INFORMATION

THE FOLLOWING IS A RECORD OF ALL CORNERS FOUND OR SET DURING THE COURSE OF THIS SURVEY

- 1) NORTH 1/4 CORNER BETWEEN SECTIONS 13 AND 24
 FOUND 2" BLA BCIP IN GOOD CONDITION AT GROUND LEVEL.
 -- 20" WHITE FIR BEARS S75°W, 10.4 FEET (RECORD S76 1/2"W, 10.23 FEET), WELL HEALED FACE AND BLA TAG
 -- 17" DOUGLAS FIR BEARS N6°E, 16.95 FEET (RECORD N9°E, 17.16 FEET), WELL HEALED FACE AND BLA TAG
 -- 7" YEW BEARS N48°E, 3.6 FEET WITH 1976 MEDCO TAG
 CORNER LIES ON 50% SIDE SLOPE APPROXIMATELY 0.5 CHAINS SOUTH OF SMALL CREEK FLOWING NORTHWEST.
- 2) WEST 1/16 CORNER BETWEEN SECTIONS 13 AND 24
 FOUND 2" BLA BCIP 0.4 FEET ABOVE GROUND.
 -- 16" 7" HIGH SLOPED OFF STUMP BEARS S8°E, 29.8 FEET (RECORD S11 1/2"E, 29.7 FEET) WELL HEALED FACE AND TAG
 -- 25" CEDAR BEARS N7°W, 43.8 FEET (RECORD N8 1/2"W, 43.7 FEET)
 CORNER LIES ON 15% WESTERLY FACING SLOPE.
- 3) NORTHWEST SECTION CORNER FOR SECTION 24
 FOUND 1970 2" BLA BCIP 0.4 FEET ABOVE GROUND IN MOUND OF STONES.
 -- 21" DOUGLAS FIR BEARS N37°E, 59.8 FEET (RECORD N33 °E, 60.06 FEET), WELL HEALED FACE AND BLA TAG
 -- 17" DOUGLAS FIR BEARS S46 1/2"W, 45.35 FEET (RECORD S49°W, 45.2 FEET) WELL HEALED FACE, NO TAG
 -- 21" DOUGLAS FIR BEARS N80°W, 73.5 FEET (RECORD N81 3/4"W, 73.3 FEET) WELL HEALED FACE, NO TAG
 -- 24" DOUGLAS FIR BEARS S4°E, 85.6 FEET (RECORD S3 3/4"E, 85.8 FEET) WELL HEALED FACE, NO TAG
 CORNER LIES ON BROAD FLAT IN OLD BURN AREA HEAVY IN CHINKAPIN AND LIGHT 50 YEAR OLD DOUGLAS FIR TIMBER.
- 4) WEST 1/4 CORNER BETWEEN SECTIONS 23 AND 24
 FOUND 1970 BLA BRASS CAP 0.4 FEET ABOVE GROUND.
 -- 42" DOUGLAS FIR BEARS N80°W, 6.6 FEET AS PER RECORD, WELL HEALED FACE AND BLA TAG
 -- 15" CEDAR BEARS S47°W, 16.2 FEET (RECORD S46°W, 16.5 FEET) WELL HEALED FACE AND BLA TAG
 CORNER LIES ON FLAT GROUND, COMMERCIALY THINNED GROUND TO NORTHEAST, BLA TIMBER TO WEST AND SOUTH.
- 5) CENTERWEST 1/16 CORNER FOR SECTION 24
 FOUND 5/8" IRON ROD SET BY BLA ADMINISTRATIVE SURVEY
 -- 17" WHITE FIR BEARS S43°W, 41.25 FEET, WE SCRIBE CW1/16 S24 BT AND TAG TREE
 -- 13" WHITE FIR BEARS N8°W, 15.6 FEET (BLA LOCATION TAG N7°W, 15.4 FEET) WE SCRIBE CW1/16 S24 BT
 MAIN GRAVEL ROAD RUNNING NORTH-SOUTH BEARS EAST 1.6 CHAINS.
- 6) SOUTHWEST 1/16 CORNER FOR SECTION 24
 FOUND 5/8" IRON ROD SET BY BLA ADMINISTRATIVE SURVEY 1.0 FEET ABOVE GROUND.
 -- 20" DOUGLAS FIR BEARS S59°E, 36.2 FEET WE SCRIBE SW1/16 S24 BT AND TAG TREE
 -- 26" CEDAR BEARS N15°W, 17.9 FEET (BLA LOCATION TAG N11 3/4"W, 18.2 FEET) WE SCRIBE SW1/16 S24 BT
 MAIN GRAVEL ROAD BEARS WEST 60 FEET AND NORTH 80 FEET.
- 7) SOUTH 1/16 CORNER BETWEEN SECTIONS 23 AND 24
 FOUND 1970 BLA BCIP 0.75 FEET ABOVE GROUND.
 -- 25" DOUGLAS FIR BEARS N35°E, 43.75 FEET (RECORD N37°E, 43.56 FEET) WELL HEALED FACE AND BLA TAG
 -- 11" DOUGLAS FIR BEARS S26°W, 5.25 FEET (RECORD S23°W, 5.6 FEET) WELL HEALED FACE AND BLA TAG
 CORNER LIES ON FLAT GROUND WITH BLA TIMBER TO WEST AND NORTH, COMMERCIALY THINNED GROUND TO SOUTHEAST.
- 8) SOUTHWEST SECTION CORNER OF SECTION 24
 FOUND 1970 BLA BCIP WITH METAL FENCE POST ALONGSIDE.
 -- 40" DOUGLAS FIR STUMP BEARS S36 E, 29.0 FEET (RECORD S34 1/4 , 29.04 FEET) CHOPPED OUT FACE AND BLA TAG
 -- 30" CEDAR STUMP BEARS N29°E, 20.35 FEET (RECORD N32 3/4"E, 20.8 FEET) VISIBLE SCRIBING, NO TAG
 -- 17" DOUGLAS FIR BEARS S77°W, 63.2 FEET (RECORD S77°W, 63.4 FEET) HEALED FACE AND BLA TAG
 -- 16" WHITE FIR BEARS N65°W, 70.8 FEET (RECORD N65°W, 70.95 FEET) WELL HEALED FAC, NO TAG
 -- 25" WHITE FIR BEARS S40°E, 13.4 FEET (RECORD S40 1/2"E, 13.2 FEET) CHOPPED OUT FACE AND BLA TAG
 -- 7" DOUGLAS FIR BEARS N72°E, 49.8 FEET (RECORD FROM BLA TAG N76°E, 49.7 FEET) HEALED FACE AND RED BLA TAG
 -- 8" DOUGLAS FIR BEARS N5°E, 18.5 FEET (RECORD FROM BLA TAG N4 1/4"E, 18.5 FEET) HEALED FACE AND RED BLA TAG
 CORNER LIES AT SW CORNER OF LOGGED UNIT WITH BLA TIMBER TO WEST AND SOUTH.
- 9) WEST 1/16 CORNER BETWEEN SECTIONS 24 AND 25
 FOUND 1970 BLA BCIP 0.3 FEET ABOVE GROUND.
 -- 14" WHITE FIR BEARS N44°E, 21.85 FEET (RECORD N43 1/2"E, 21.11 FEET) HEALED FACE AND BLA TAG
 -- 24" CEDAR BEARS S41°E, 7.5 FEET (RECORD S41°E, 7.26 FEET) WELL HEALED FACE AND BLA TAG
 CORNER LIES AT SOUTHEAST CORNER OF LOGGED UNIT, BLA TIMBER TO SOUTH AND EAST.
- 10) 1/4 CORNER BETWEEN SECTIONS 24 AND 25
 FOUND 1964 BLA BCIP IN MOUND OF STONE
 -- 22" WHITE FIR BEARS N26°E, 26.4 FEET AS PER RECORD, WELL HEALED FACE AND BLA TAG
 -- BT TO SOUTHWEST IS LOW STUMP REMAINS NO MARKS
 CORNER LIES ON NORTH FACING SLOPE APPROXIMATELY 500 FEET SOUTH OF STREAM.
- 11) CENTERSOUTH 1/16 CORNER FOR SECTION 24
 FOUND 5/8" IRON ROD FROM BLA ADMINISTRATIVE SURVEY 0.8 FEET ABOVE GROUND.
 -- 22" DOUGLAS FIR BEARS N15°W, 8.5 FEET (BLA LOCATION TAG N15°W, 8.3 FEET) WE SCRIBE CS1/16 S24 BT
 -- 17" WHITE FIR BEARS S70°E, 12.0 FEET, WE SCRIBE CS1/16 S24 BT AND TAG TREE
 CORNER LIES ON FLAT BENCH LOGGED UNIT TO NORTHWEST, BLA TIMBER TO EAST AND SOUTH.
- 12) CENTER 1/4 CORNER FOR SECTION 24
 FOUND 5/8" IRON ROD FROM BLA ADMINISTRATIVE SURVEY 0.6 FEET ABOVE GROUND.
 -- 10" CEDAR BEARS S46°W, 17.8 FEET, WE SCRIBE C1/4 S24 BT AND TAG TREE
 -- 30" DOUGLAS FIR BEARS S80°E, 15.4 FEET (BLA LOCATION TAG S80 1/2"E, 15.3 FEET) WE SCRIBE C1/4 S24 BT
 -- 24" DOUGLAS FIR BEARS N76°E, 30.9 FEET, WE SCRIBE C1/4 S24 BT AND TAG TREE
 -- NO TREE TO MARK IN NORTHWEST QUADRANT
 CORNER LIES APPROX. 50 FEET SOUTH OF ROCK ROAD JUNCTION AND 100 FEET NORTH OF CREEK.
- 13) CENTERWEST VEST EAST 1/256 CORNER
 FOUND 5/8" IRON ROD SET FROM BLA ADMINISTRATIVE 0.6 FEET ABOVE GROUND.
 -- 10 1/2" DOUGLAS FIR BEARS S13°W, 11.7 FEET (BLA LOCATION TAG S12°W, 11.0 FEET) WE SCRIBE BT
 CORNER LIES 16.0 FEET SOUTH OF CREEK.
- 14) CENTEREAST 1/16 CORNER BETWEEN SECTIONS 24 AND 19
 FOUND 5/8" IRON ROD SET FROM BLA ADMINISTRATIVE SURVEY
 -- 35" DOUG FIR BEARS N88°W, 12.1 FEET (BLA LOCATION TAG N89°W 11.8 FEET) WE SCRIBE CE 1/16 S24 BT
 -- 11" WHITE FIR BEARS N61°E, 13.5 FEET WE SCRIBE CE 1/16 S24 BT AND TAG TREE
 CORNER LIES ON NORTH FACING SLOPE APPROXIMATELY 150 FEET SOUTH OF STREAM.
- 15) 1/4 CORNER BETWEEN SECTIONS 24 AND 19
 FOUND 1970 BLA BCIP WITH SURVEY MONUMENT SIGN POST ALONGSIDE
 -- 25" DOUGLAS FIR BEARS N45°E, 28.3 FEET (RECORD N47°E, 28.1 FEET) WELL HEALED FACE AND BLA TAG
 -- 28" PINE BEARS N70°W, 29.0 FEET, (RECORD N59°W 28.7 FEET) WELL HEALED FACE AND BLA TAG
 CORNER LIES ON FLAT BENCH FOREST SERVICE BLAZING RUNNING NORTH AND EAST FROM CORNER.



BASIS OF BEARING
BLA ADMINISTRATIVE
SURVEY

**** RECEIVED ****
 Date 4-5-99 By JF
 This survey consists of:
1 sheet(s) Map
0 page(s) Narrative
 JACKSON COUNTY
 SURVEYOR

LEGEND:

- ⊙ - FOUND MONUMENT
- - LINES FLAGGED, BLAZED & TAGGED
- - - - - PROJECTED LINES
- () - 1970 BLA SURVEY FILED IN JACKSON COUNTY SURVEYORS OFFICE
- (()) - UNRECORDED BLA ADMINISTRATIVE SURVEY

REGISTERED
PROFESSIONAL
LAND SURVEYOR
Ken W. Hoffine
OREGON
JULY 18, 1987
KEN V. HOFFINE
228

EXPIRES 6-30-99