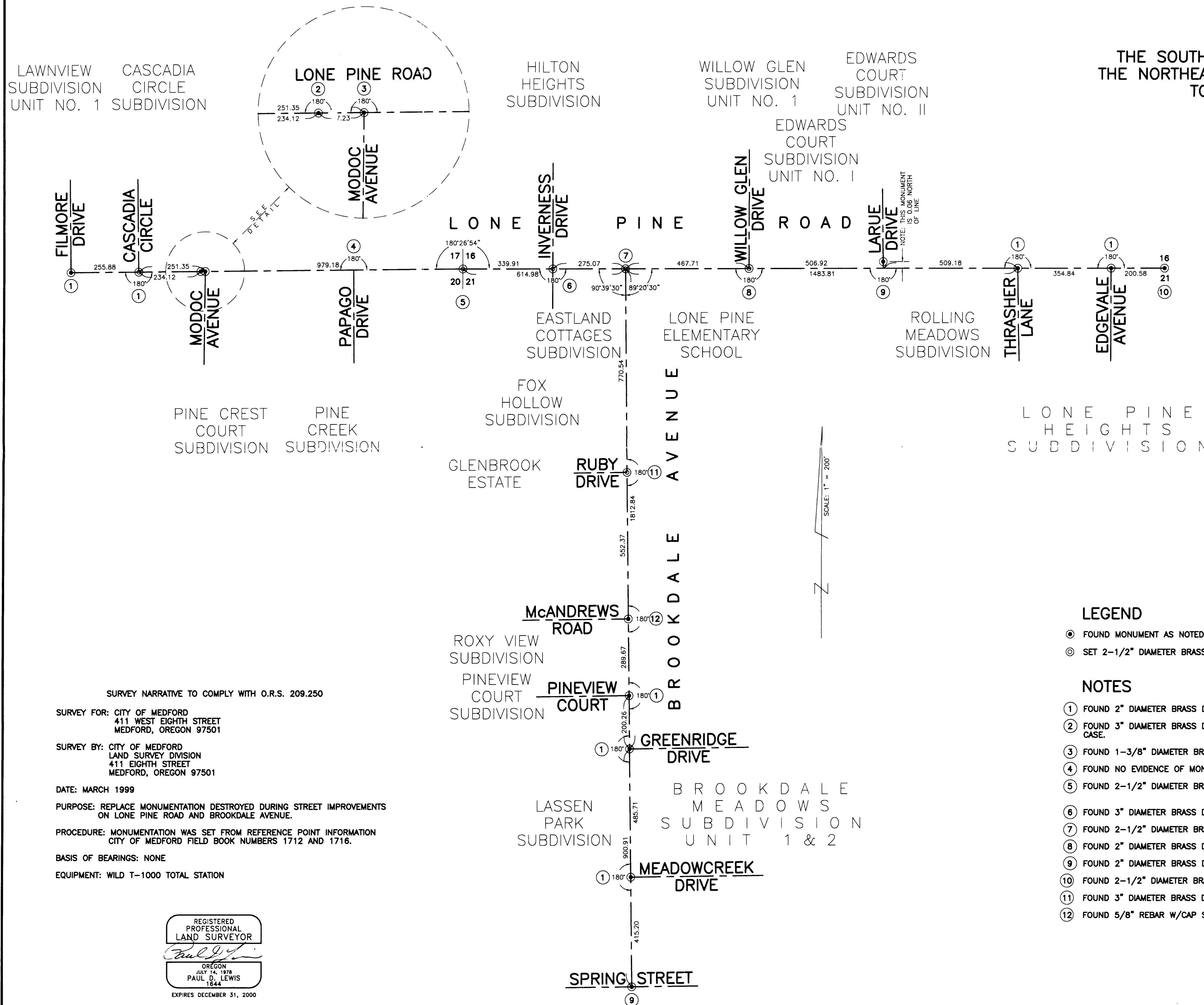


MAP OF SURVEY

OF
 LONE PINE ROAD
 BETWEEN FILLMORE DRIVE AND FOOTHILL ROAD
 AND
 BROOKDALE AVENUE
 BETWEEN SPRING STREET AND LONE PINE ROAD
 LOCATED IN

THE SOUTH HALF OF SECTION 16, THE SOUTHEAST QUARTER OF SECTION 17,
 THE NORTHEAST QUARTER OF SECTION 20 AND THE NORTH HALF OF SECTION 21,
 TOWNSHIP 37 SOUTH, RANGE 1 WEST, WILLAMETTE MERIDIAN
 CITY OF MEDFORD, JACKSON COUNTY, OREGON



LEGEND

- ⊙ FOUND MONUMENT AS NOTED.
- ⊙ SET 2-1/2" DIAMETER BRASS DISC W/DRILL HOLE STAMPED "CITY OF MEDFORD SURVEYOR" IN A 2" DIAMETER IRON PIPE IN MONUMENT CASE.

NOTES

- ① FOUND 2" DIAMETER BRASS DISC W/PUNCH MARK STAMPED "L.S. 1913" (FLUSH) IN CONCRETE.
- ② FOUND 3" DIAMETER BRASS DISC W/PUNCH MARK STAMPED "T.37S. R.1W. N.W. COR. D.L.C. NO. 63 1990 L.S. 1913" (3" DOWN) IN MONUMENT CASE.
- ③ FOUND 1-3/8" DIAMETER BRASS DISC W/PUNCH MARK STAMPED "L.S. 1913" (FLUSH) IN CONCRETE.
- ④ FOUND NO EVIDENCE OF MONUMENT.
- ⑤ FOUND 2-1/2" DIAMETER BRASS DISC W/PUNCH MARK STAMPED "T.37S. R.1W. 17|16 C.S. 1963 A161" (FLUSH) IN CONCRETE.
20|21
- ⑥ FOUND 3" DIAMETER BRASS DISC W/PUNCH MARK (8" DOWN) IN MONUMENT CASE.
- ⑦ FOUND 2-1/2" DIAMETER BRASS DISC W/PUNCH MARK & SLASHES STAMPED "CITY OF MEDFORD" (7" DOWN) IN MONUMENT CASE.
- ⑧ FOUND 2" DIAMETER BRASS DISC W/PUNCH MARK (FLUSH) IN CONCRETE.
- ⑨ FOUND 2" DIAMETER BRASS DISC W/CHISEL "X" STAMPED L.S. 1913" (FLUSH) IN CONCRETE.
- ⑩ FOUND 2-1/2" DIAMETER BRASS DISC W/PUNCH MARK STAMPED "T.37S. R.1W. 1/4S. 16/21 C.S. 1992" (3" DOWN) IN MONUMENT CASE.
- ⑪ FOUND 3" DIAMETER BRASS DISC W/PUNCH MARK & SLASHES STAMPED "L.S. 2189" (FLUSH) IN CONCRETE.
- ⑫ FOUND 5/8" REBAR W/CAP STAMPED "MEDFORD CITY SURVEYOR" (FLUSH).

SURVEY NARRATIVE TO COMPLY WITH O.R.S. 209.250

SURVEY FOR: CITY OF MEDFORD
 411 WEST EIGHTH STREET
 MEDFORD, OREGON 97501

SURVEY BY: CITY OF MEDFORD
 LAND SURVEY DIVISION
 411 EIGHTH STREET
 MEDFORD, OREGON 97501

DATE: MARCH 1999

PURPOSE: REPLACE MONUMENTATION DESTROYED DURING STREET IMPROVEMENTS ON LONE PINE ROAD AND BROOKDALE AVENUE.

PROCEDURE: MONUMENTATION WAS SET FROM REFERENCE POINT INFORMATION CITY OF MEDFORD FIELD BOOK NUMBERS 1712 AND 1716.

BASIS OF BEARINGS: NONE

EQUIPMENT: WILD T-1000 TOTAL STATION

