

RECORD OF SURVEY

W 1/2 SEC. 32, T. 38S., R. 1E., W.M.
E 1/2 SEC. 31, T. 38S., R. 1E., W.M.
JACKSON COUNTY, OREGON
NOVEMBER 1998

EAGLE MILL ROAD RELOCATED R/W CENTER LINE

NUMBER	DELTA ANGLE (Δ)	T (M)	R (M)
C20	24°49'52"	29.720	135.000
C21	06°2'21"	55.522	1000.000
C22	66°23'57"	40.814	62.371

NUMBER	DIRECTION	DISTANCE
L20	S 88°55'01" E	40.142
L21	S 66°50'7" E	260.339
L22	S 59°53'47" E	62.214
L23	N 53°42'17" E	29.491

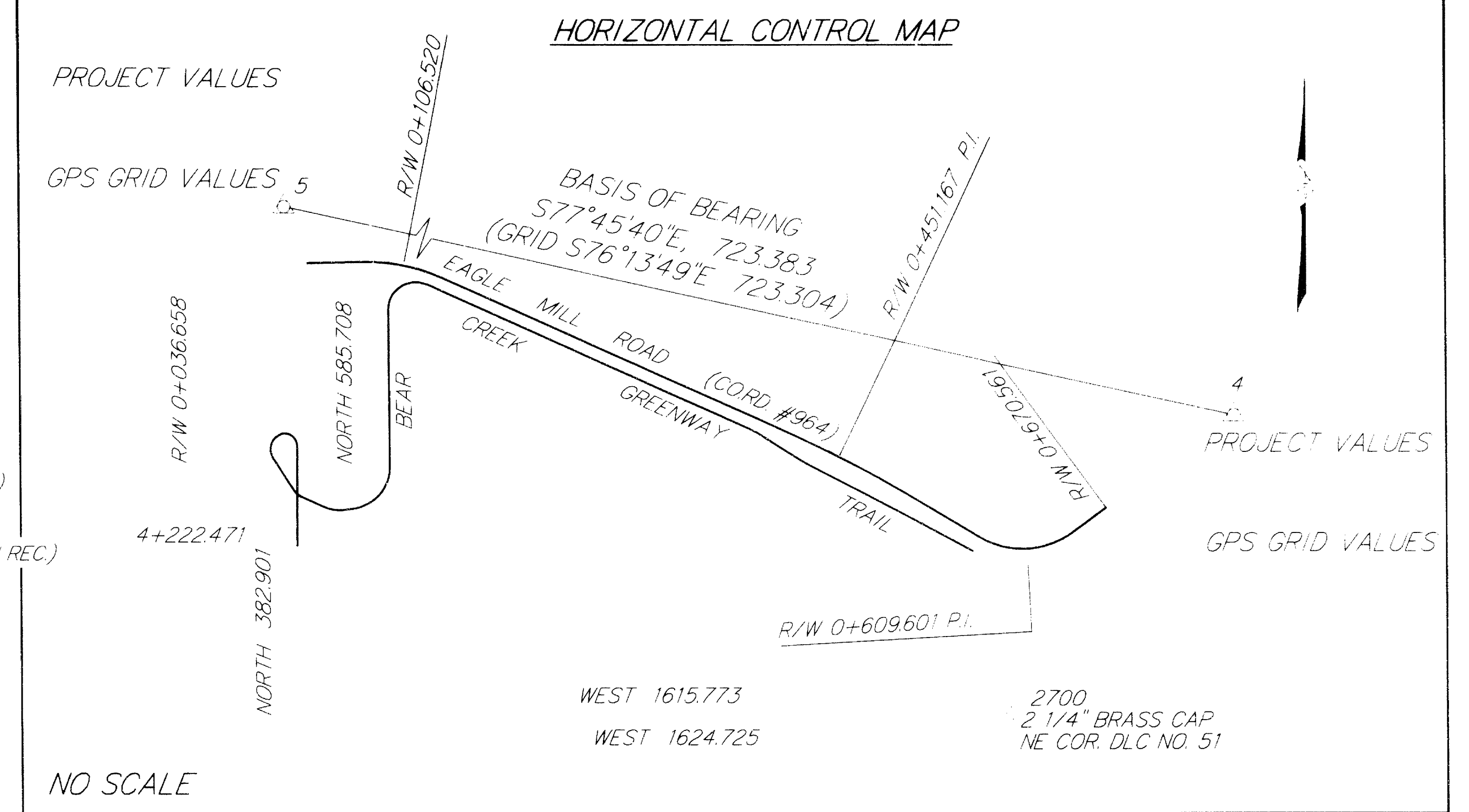
CONTROL POINTS SET

POINT #	NORTH	EAST
122	64 009.9120	1 315 636.7710
123	63 972.0420	1 315 537.3520
124	64 052.8680	1 315 406.3650
125	64 130.0250	1 315 232.7710
126	64 183.6040	1 315 086.5140
127	64 126.9220	1 315 046.4110
128	64 031.1560	1 315 020.3000
130	64 034.2790	1 314 992.0450

FOUND MONUMENTS

POINT #	NORTH	EAST	DESCRIP
2331	63 989.4730	1 315 471.0860	5/8" IR (**)
2332	64 007.9090	1 315 459.5040	5/8" IR (***)
2333	64 023.7550	1 315 468.5720	5/8" IR (***)
2340	63 998.6930	1 315 449.6540	5/8" IR (**)
2504	64 175.2290	1 315 080.6540	5/8" IR (**)
2531	64 142.2380	1 315 074.8250	5/8" IR (**)
2540	64 096.8180	1 315 049.4190	5/8" IR (**)
2567	64 128.6150	1 315 001.9290	PK (UNKNOWN REC.)
2605	64 015.2980	1 315 019.2260	5/8" IR (**)
1027	64 172.5120	1 315 109.3130	5/8" IR (**)
1028	64 257.9120	1 314 997.4740	3/4" IP (UNKNOWN REC.)
1032	64 008.4530	1 315 430.3580	5/8" IR (**)
1033	63 975.9690	1 315 498.2470	5/8" IR (**)
1034	63 973.8980	1 315 509.2370	5/8" IR (**)
1035	63 973.7020	1 315 515.6170	5/8" IR (**)
5598	63 980.3480	1 315 487.2140	5/8" IR (**)
5599	64 029.2660	1 315 399.7310	PK (*)
5600	64 070.3260	1 315 324.5180	5/8" IR (**)
5021	64 026.6010	1 315 581.2100	5/8" IR (***)

(*) SEE C.S. 11875, CAPS MKD. FRIAR PLS 961
(**) SEE C.S. 10704, CAPS MKD. FRIAR PLS 961
(***) JACKSON CO. PUBLIC WORKS R/W MON.



LEGEND:

- SET 16MM (5/8") X 762MM (30") IRON ROD W/YELLOW PLASTIC CAP MARKED "OBEC PLS1937" UNLESS OTHERWISE NOTED
- ⊠ CONTROL POINT, SET 16MM (5/8") IRON ROD W/RED PLASTIC CAP MARKED "OBEC TRAVERSE PT."
- FOUND MONUMENT
- COMPUTED POINT - NOTHING FOUND NOR SET
- () RECORD INFORMATION
- ▨ RIGHT OF WAY ACQUISITION

MONUMENTED POINTS

POINT#	NORTH	EAST
*7401	64 165.6110	1 315 013.4020
*7476	64 238.4260	1 315 012.0260
7480	64 069.3894	1 315 397.9907
7481	64 119.5523	1 315 211.8713
7482	64 178.5648	1 315 145.3586
7483	64 207.6339	1 315 101.9146
7484	64 206.5264	1 315 052.0368
7485	64 181.8017	1 315 027.0985
7486	64 182.2538	1 315 060.5301
7487	64 166.0331	1 315 095.6226
7488	64 167.5263	1 315 100.9521
7489	64 161.1770	1 315 060.1603
7490	64 161.2017	1 315 070.6603
7491	64 118.5052	1 315 060.2603
7492	64 068.4959	1 315 056.3776
7493	64 048.5175	1 315 070.9244
7494	64 048.5143	1 315 058.9244
7495	64 024.8896	1 315 039.1888
7496	64 013.0806	1 315 041.3211
7497	64 012.0093	1 315 035.3880
7498	64 023.8184	1 315 033.2558
7499	64 025.5480	1 315 019.1472
*7500	64 014.6038	1 315 014.2256
*7501	64 021.5970	1 314 992.8364
*7502	64 026.5681	1 314 988.2452
*7503	64 049.5624	1 314 973.0525
7504	64 079.2451	1 314 979.9131
*7505	63 992.2087	1 314 992.6722

• FALSE CALLS - POINTS NOT MONUMENTED
** POINTS FALL IN CREEK, TREE OR SIGNAL FTG., NOT MONUMENTED

FOUND MONUMENTS PER C.S. 11875

NUMBER	DIRECTION	DISTANCE	(RECORD C.S. 11875)
L30	S61°22'09"E	85.691	(S61°20'05"E, 281.14')
L31	S55°48'05"E	370.30	(S55°45'58"E, 121.49')
L32	S63°10'10"E	21.624	(S63°08'07"E, 71.06')
L33	S66°43'22"E	23.331	(S66°57'26"E, 76.25')
L34	S60°29'58"E	18.530	(S60°44'02"E, 60.80')
L35	S68°21'06"E	11.870	(S67°39'33", 39.24')
L36	S79°19'26"E	11.180	(S79°24'10"E, 36.63')
L37	S88°14'14"E	6.383	(S88°02'52"E, 20.93')

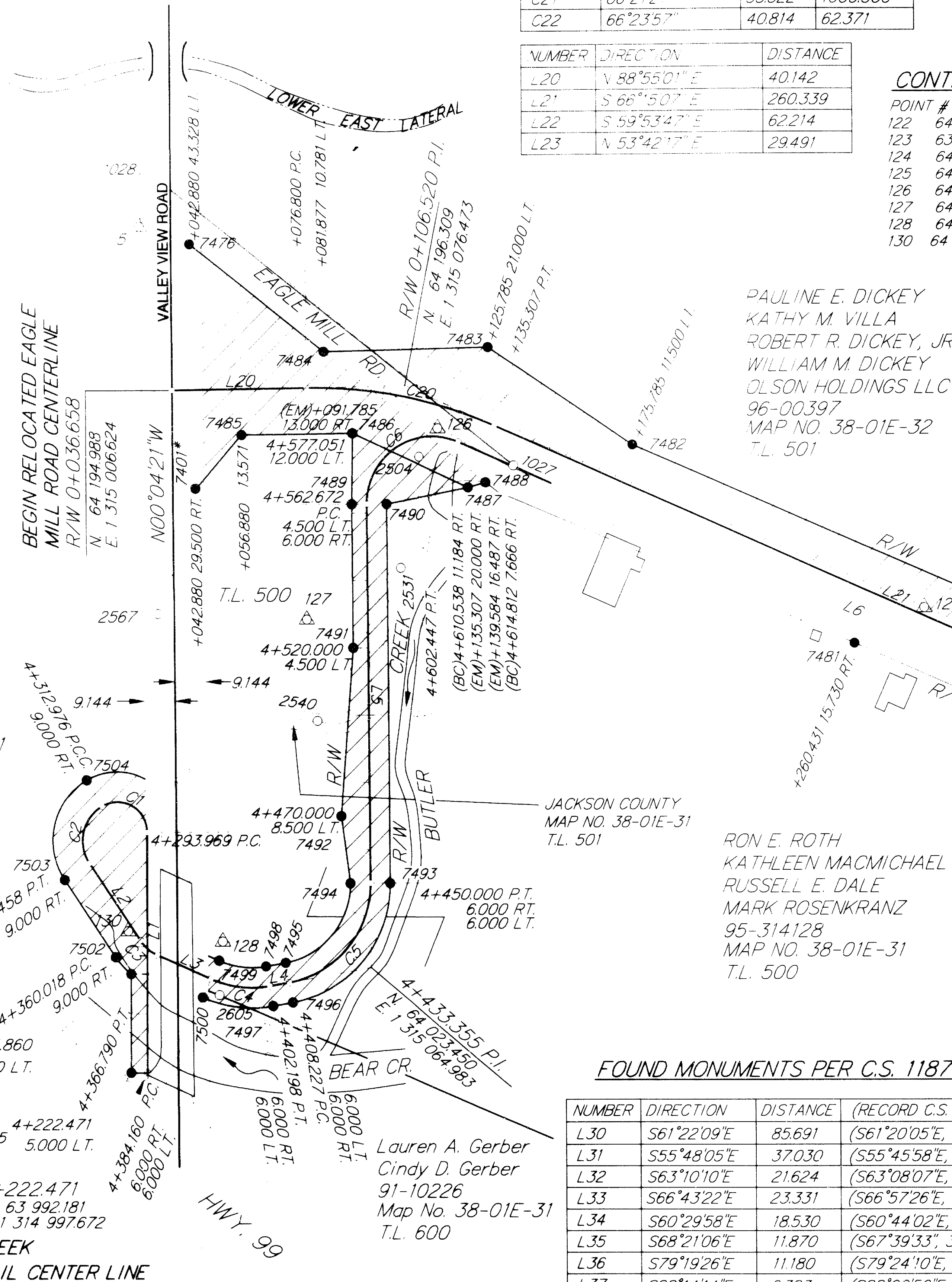
NARRATIVE

THE PURPOSE OF THIS SURVEY IS TO SHOW THE RIGHT OF WAY MONUMENTATION FOR A SECTION OF EAGLE MILL RD. AND THE BEAR CREEK GREENWAY TRAIL. THE SURVEY ALSO SHOWS RIGHT OF WAY MONUMENTS AND PRIVATE PROPERTY MONUMENTS RECOVERED AS WELL AS TRAVERSE CONTROL MONUMENTS SET. THIS SURVEY IS THEREFORE INTENDED TO PROVIDE FOR PERPETUATION OF THESE LOCATIONS WHICH MAY BE DISTURBED BY THE CONSTRUCTION OF THIS HIGHWAY PROJECT. IT IS THE INTENT OF THIS SURVEY TO MEET THE REQUIREMENTS AS SET FORTH IN ORS 209.150 AND ORS 209.250.

THIS PROJECT WAS SURVEYED AND DRAFTED IN METERS AND MEETS THE ODOT AND FHWA METRIC CONVERSION PLAN (1 METER = 3280.83989501 INT. FT.). THIS DRAWING REFLECTS A LOCAL DATUM PLANE (LDP) WHICH IS RELATIVE TO THE OREGON COORDINATE SYSTEM, SOUTH ZONE, (NAD83-91) WITH RESPECT TO THE LOCAL LATITUDE AND GROUND ELEVATION. METRIC VALUES WERE SUPPLIED TO THIS PROJECT BY MENASHA CORP. VIA GPS SURVEY. TRAVERSE POINTS SET DURING THIS SURVEY WERE NOT SET ON AND DO NOT REPRESENT PROPERTY LINES, OR RIGHT OF WAY LINES, AND ARE INTENDED FOR USE BY OBEC IN SUPPORT OF THIS CONSTRUCTION PROJECT. IT IS NOT THE INTENT OF OBEC TO PERPETUATE THESE TRAVERSE POINTS AS MONUMENTS.

THE NEW RIGHT OF WAY CENTER LINE OF EAGLE MILL RD. MATCHED TO EXISTING COUNTY RIGHT OF WAY CENTER LINE AT STATION 0+533.401 WHICH EQUALS THE OLD STATION POT (17+50) MAKING A CONTINUOUS ALIGNMENT. THE RIGHT OF WAY ALIGNMENTS VARY FROM THE CONSTRUCTION ALIGNMENTS (SEE CONSTRUCTION PLANS).

NOTE: ALL DISTANCES ARE IN METERS UNLESS OTHERWISE NOTED.



BEAR CREEK GREENWAY TRAIL CENTER LINE

NUMBER	DIRECTION	DISTANCE	NUMBER	DELTA ANGLE (Δ)	T (M)	R (M)	P.I. STATION	P.I. NORTHING	P.I. EASTING
L1	N 00°19'13" E	71.498	C1	120°50'07"	15.876	9.012	4+309.845	64 079.553	1 314 998.160
L2	S 33°27'12" E	27.561	C2	92°56'17"	12.643	12.011	4+325.618	64 065.072	1 314 973.592
L3	S 65°47'11" E	17.370	C3	32°19'59"	3.479	12.000	4+363.497	64 028.627	1 314 997.672
L4	N 79°45'54" E	6.029	C4	34°26'55"	9.301	30.000	4+393.461	64 016.261	1 315 025.169
L5	N 00°08'04" W	112.610	C5	79°53'57"	25.128	30.000	4+433.355	64 023.450	1 315 064.983
			C6	113°56'45"	30.765	20.000	4+593.437	64 191.953	1 315 064.588

REFERENCES

- BARGAIN AND SALE DEED (DICKEY) RECORDED JULY 15, 1997 IN FILE NO. 11402802, INSTRUMENT NO. 97-26592, JACKSON COUNTY OFFICIAL RECORDS.
- BARGAIN AND SALE DEED (GERBER) RECORDED DECEMBER 03, 1997 IN FILE NO. 11402805, INSTRUMENT NO. 97-45219, JACKSON COUNTY OFFICIAL RECORDS.
- BARGAIN AND SALE DEED (ROTH) RECORDED AUGUST 25, 1997 IN FILE NO. 11402803, INSTRUMENT NO. 97-31802, JACKSON COUNTY OFFICIAL RECORDS.
- BARGAIN AND SALE DEED (ROTH) RECORDED IN FILE NO. 11402803P4, INSTRUMENT NO. 97-06176, JACKSON COUNTY OFFICIAL RECORDS.
- BARGAIN AND SALE DEED (ROTH) RECORDED NOVEMBER 7, 1997 IN FILE NO. 11402803, INSTRUMENT NO. 97-42027, JACKSON COUNTY OFFICIAL RECORDS.
- BARGAIN AND SALE DEED (MENCAS) RECORDED NOVEMBER 12, 1997 IN FILE NO. 11402804, INSTRUMENT NO. 97-42453, JACKSON COUNTY OFFICIAL RECORDS.

11/19/98
REGISTERED PROFESSIONAL LAND SURVEYOR
MARK L. ARMSTRONG
JULY 17, 1991
EXPIRES 12/31/99

OBEC Consulting Engineers
244 COUNTRY CLUB ROAD
EUGENE, OREGON 97401
FAX (541) 683-6576
TEL (541) 683-6090

EAGLE MILL ROAD AND BEAR CR. GREENWAY TRAIL
JACKSON COUNTY ROAD DEPARTMENT
JACKSON COUNTY, OREGON

Right of Way Monumentation Survey
DESIGNED: M.L.A. PROJ. NO. 114-288 SHT. 1 OF 1
DRAWN: A.D. FILE NO. 92915