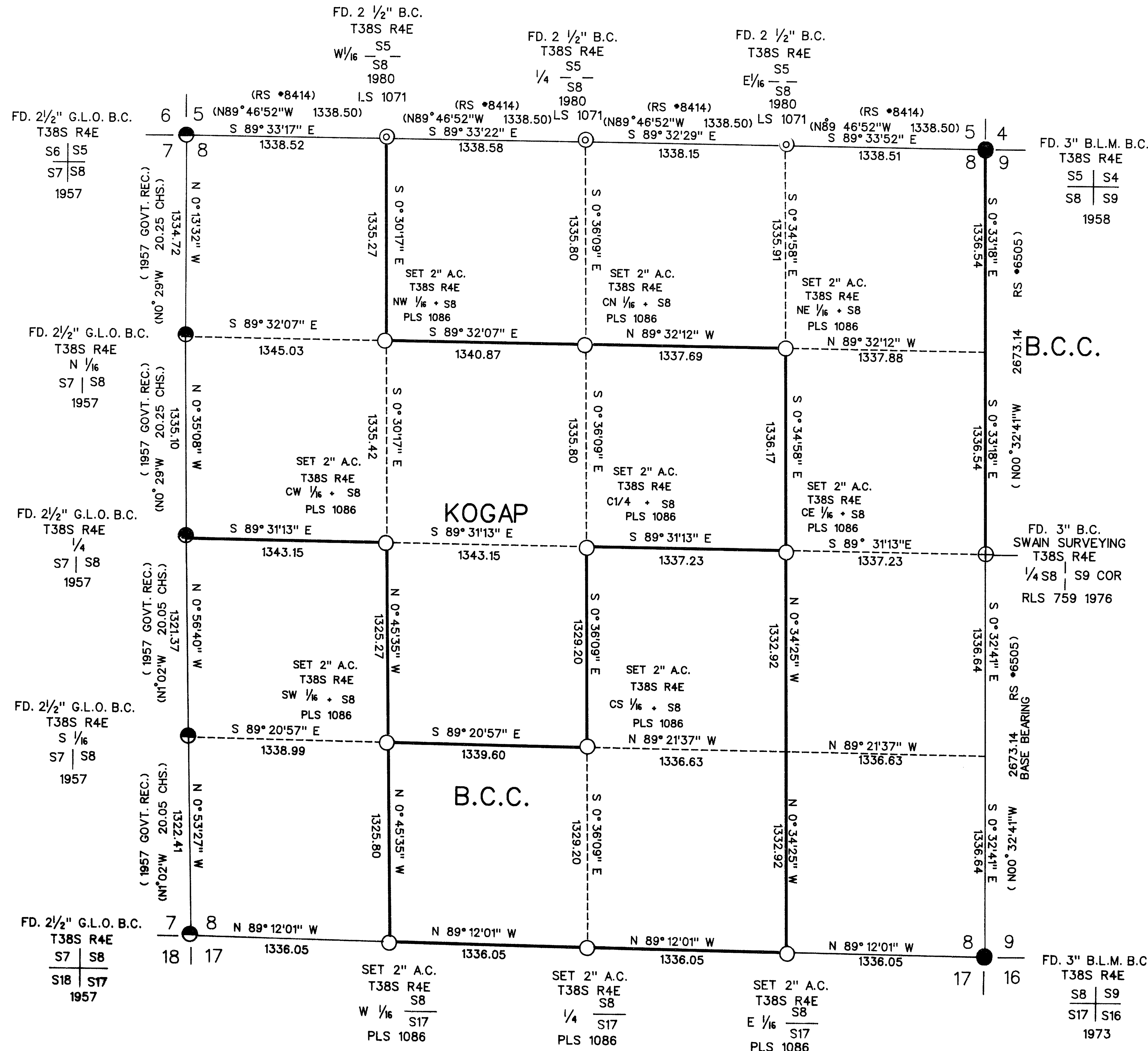


MAP OF SURVEY LOCATED IN SECTION 8, TOWNSHIP 38 SOUTH, RANGE 4 EAST, WILLAMETTE MERIDIAN



SURVEY FOR

BOISE CASCADE
TIMBER AND WOOD PRODUCTS GROUP
P.O. BOX 100
MEDFORD, OREGON 97501

KOGAP ENTERPRISES INC.
P.O. BOX 1608
MEDFORD, OREGON 97501

LEGEND

- ⊕ FOUND 2 1/2" BRASS CAP SET SURVEY NUMBER 6505
- FOUND 2 1/2" GENERAL LAND OFFICE BRASS CAP
- ⊙ FOUND 2 1/2" BRASS CAP SET SURVEY NUMBER 8418
- FOUND 3" BLM BRASS CAP
- SET 2" DIAMETER ALUM. CAP ON 5/8" BY 30" IRON PIN
- () RECORD DATA

— LINE MARKED AND POSTED THIS SURVEY

BASIS OF BEARING

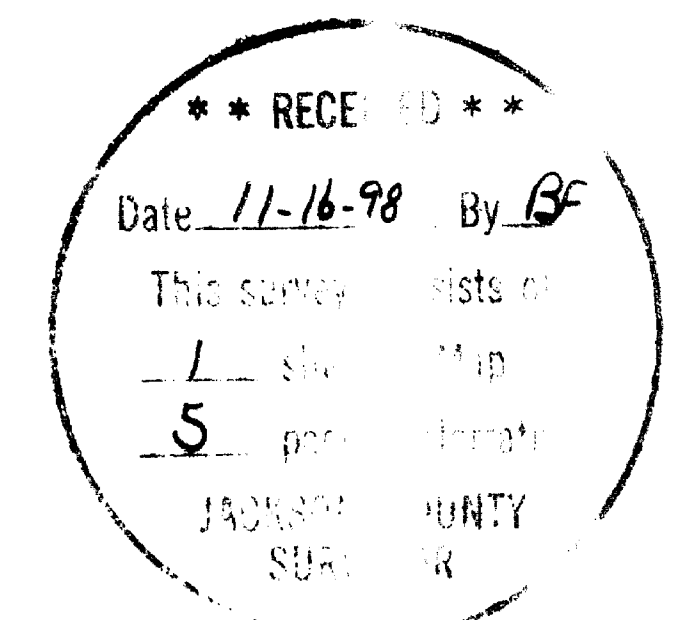
SURVEY NUMBER 6505
SOUTH HALF OF EAST LINE

SCALE

1" = 600'

DATE

NOVEMBER 10, 1998



SURVEY BY

RAMBO SURVEYING
ARTHUR R. RAMBO
735 VISTA PARK DRIVE
EAGLE POINT, OREGON 97524

REGISTERED
PROFESSIONAL
LAND SURVEYOR

Arthur R. Rambo
OREGON
JULY 30, 1976
ARTHUR R. RAMBO
NO 1086

EXPIRES DECEMBER 31, 1998

TAX LOT No. 38-4E-(1008)-(2500)-(2900)

SURVEY NARRATIVE TO COMPLY WITH O.R.S. 209.250

LOCATION: SECTION 8 TOWNSHIP 38 SOUTH, RANGE 4 EAST,
WILLAMETTE MERIDIAN, JACKSON COUNTY,
OREGON.

SURVEY FOR: BOISE CASCADE
TIMBER AND WOOD PRODUCTS GROUP
P.O. BOX 100
MEDFORD, OREGON 97501

AND

KOGAP ENTERPRISES INC.
P.O. BOX 1608
MEDFORD, OREGON 97501

SURVEY BY: RAMBO SURVEYING
ARTHUR R. RAMBO LS1086
735 VISTA PARK DRIVE
EAGLE POINT, OREGON 97524

DATE: NOVEMBER 10, 1998

BASIS OF BEARING: SURVEY NUMBER 6505 (SOUTH HALF OF EAST
LINE)

PURPOSE: TO MARK AND POST CERTAIN BOISE CASCADE AND
KOGAP ENTERPRISES INC. BOUNDARY LINES
ALONG THE EAST AND SOUTH SECTION LINES,
AND CERTAIN INTERIOR LINES OF SAID SECTION
8 PER THE DIRECTION OF BOISE CASCADE
CORPORATION AND KOGAP ENTERPRISES INC. AS
SHOWN ON THE PLAT TO ACCOMPANY THIS
NARRATIVE.

PROCEDURE: A SEARCH OF RECORDS REVEALED THAT ALL THE
EXTERIOR CORNERS, EXCEPT THE ONE-QUARTER
CORNER COMMON TO SECTION 8 AND SECTION
17, OF SAID SECTION 8 NEEDED FOR CONTROL
OF THIS SURVEY WERE REESTABLISHED FROM
ORIGINAL EVIDENCE OR PROPORTIONATE
MEASUREMENT. COUNTY RECORDS REVEALED THAT
THE ONE-QUARTER CORNER COMMON TO SECTION 8
AND SECTION 17 HAD BEEN SEARCHED FOR AND
NOT FOUND.

I RAN A TRAVERSE TYING TO THE CORNERS
NEEDED FOR CONTROL OF THIS SURVEY. A
POSITION FOR THE ONE-QUARTER CORNER
COMMON TO SECTION 8 AND SECTION 17 WAS
THEN CALCULATED AND I CONDUCTED
ANOTHER SEARCH FOR SAID ONE-QUARTER
CORNER. NO EVIDENCE OF THE
ORIGINAL CORNER COULD BE FOUND (A BLM
K-TAG MARKED [AT CORNER] WAS FOUND AT
THE SEARCH SITE OF THE CALCULATED
POSITION OF CORNER). AFTER NOT FINDING
ANY ORIGINAL EVIDENCE OF THE CORNER I
SET A MONUMENT AT THE PROPORTIONATE
LOCATION FOR THE SAID ONE-QUARTER
CORNER.

THEN TRAVERSES WERE RAN TYING TO THE CONTROL SURVEY OF THIS PROJECT. THE LINES WERE THEN MARKED AND POSTED AS SHOWN ON THE PLAT TO ACCOMPANY THIS NARRATIVE.

NEW TREES MARKED AT EXISTING CORNERS

ALL TREES ARE MEASURED TO THE CENTER OF THE TREE AT THE BASE UNLESS OTHER WISE STATED. ALL TREES HAVE A BRASS WASHER MARKED PLS 1086 NAILED TO THE LOWER FACE.

AT THE NORTH ONE-SIXTEENTH CORNER COMMON TO SECTION 7 AND SECTION 8. I FOUND A 2 1/2" DIAMETER GLO BRASS CAP.

FROM WHICH:

I MARK A NEW TREE. A 7 1/2" INCH DIAMETER DOUGLAS FIR BEARS S57°01'E, 42.7 FEET MARKED N1/16S8 IN UPPER FACE, BT IN LOWER FACE.

CORNERS SET THIS SURVEY

ALL TREES ARE MEASURED TO THE CENTER OF THE TREE AT THE BASE UNLESS OTHER WISE STATED. ALL TREES HAVE A BRASS WASHER MARKED PLS 1086 NAILED TO THE LOWER FACE.

ONE-QUARTER CORNER COMMON TO SECTION 8 AND SECTION 17. AT THE CORNER LOCATION I SET A 5/8 BY 30 INCH IRON PIN WITH A 2 INCH DIAMETER ALUMINUM CAP, MARKED:

T38S R4E
S8
1/4 ----
S17
PLS 1086

FROM WHICH:

A 13 INCH DIAMETER WHITE FIR BEARS N28°27'W, 12.9 FEET MARKED 1/4S8 IN UPPER FACE, BT IN LOWER FACE.

A 14 INCH DIAMETER WHITE FIR BEARS N28°21'E, 20.7 FEET MARKED 1/4S8 IN UPPER FACE, BT IN LOWER FACE.

A 10 1/2 INCH DIAMETER WHITE FIR BEARS S2°27'E, 43.0 FEET MARKED 1/4S17 IN UPPER FACE, BT IN LOWER FACE.

A 13 1/2 INCH DIAMETER DOUGLAS FIR BEARS S75°35'W, 6.8 FEET MARKED 1/4S17 IN UPPER FACE, BT IN LOWER FACE.

EAST ONE-SIXTEENTH CORNER COMMON TO SECTION 8 AND SECTION 17. AT THE CORNER LOCATION I SET A 5/8 BY 30 INCH IRON PIN WITH A 2 INCH DIAMETER ALUMINUM CAP, MARKED:

T38S R4E
S8
E1/16----
S17
PLS 1086

FROM WHICH:

A 10 1/2 INCH DIAMETER PONDEROSA PINE
BEARS N25°47'W, 98.6 FEET MARKED E1/16S8
IN UPPER FACE, BT IN LOWER FACE.

A 15 1/2 INCH DIAMETER PONDEROSA PINE
BEARS S69°18'W, 122.2 FEET MARKED E1/16S17
IN UPPER FACE, BT IN LOWER FACE.

CENTREAST ONE-SIXTEENTH CORNER SECTION 8.
AT THE CORNER LOCATION I SET A 5/8 BY 30
INCH IRON PIN WITH A 2 INCH DIAMETER
ALUMINUM CAP, MARKED:

T38S R4E
CE1/16 + S8
PLS 1086

FROM WHICH:

A 10 INCH DIAMETER PONDEROSA PINE BEARS
S29°54'W, 52.9 FEET MARKED CE1/16S8 IN
UPPER FACE, BT IN LOWER FACE.

A 7 1/2 INCH DIAMETER PONDEROSA PINE BEARS
N54°13'W, 53.8 FEET MARKED CE1/16S8 IN
UPPER FACE, BT IN LOWER FACE.

NORTHEAST ONE-SIXTEENTH CORNER SECTION 8.
AT THE CORNER LOCATION I SET A 5/8 BY 30
INCH IRON PIN WITH A 2 INCH DIAMETER
ALUMINUM CAP, MARKED:

T38S R4E
NE1/16 + S8
PLS 1086

FROM WHICH:

A 12 INCH DIAMETER WHITE FIR BEARS
N26°52'W, 11.9 FEET MARKED NE1/16S8 IN
UPPER FACE, BT IN LOWER FACE.

A 14 1/2 INCH DIAMETER WHITE FIR BEARS
S54°13'E, 5.2 FEET MARKED NE1/16S8 IN
UPPER FACE, BT IN LOWER FACE.

CENTERNORTH ONE-SIXTEENTH CORNER SECTION
8. AT THE CORNER LOCATION I SET A 5/8 BY
30 INCH IRON PIN WITH A 2 INCH DIAMETER
ALUMINUM CAP, MARKED:

T38S R4E
CN1/16 + S8
PLS 1086

FROM WHICH:

A 12 1/2 INCH DIAMETER WHITE FIR BEARS
S86°47'E 40.5 FEET MARKED CN1/16S8 IN
UPPER FACE, BT IN LOWER FACE.

A 14 1/2 INCH DIAMETER WHITE FIR BEARS
S28°29'W, 14.9 FEET MARKED CN1/16S8 IN
UPPER FACE, BT IN LOWER FACE.

NORTHWEST ONE-SIXTEENTH CORNER SECTION 8.
AT THE CORNER LOCATION I SET A 5/8 BY 30
INCH IRON PIN WITH A 2 INCH DIAMETER
ALUMINUM CAP, MARKED:

T38S R4E
NW1/16 + S8
PLS 1086

FROM WHICH:

A 9 INCH DIAMETER WHITE FIR BEARS S45°54'W
12.6 FEET MARKED NW1/16S8 IN UPPER FACE,
BT IN LOWER FACE.

AN 8 INCH DIAMETER WHITE FIR BEARS
N72°29'W, 12.4 FEET MARKED NW1/16S8 IN
UPPER FACE, BT IN LOWER FACE.

CENTER ONE-QUARTER CORNER SECTION 8. AT
THE CORNER LOCATION I SET A 5/8 BY 30 INCH
IRON PIN WITH A 2 INCH DIAMETER ALUMINUM
CAP, MARKED:

T38S R4E
C1/4 + S8
PLS 1086

FROM WHICH:

A 14 1/2 INCH DIAMETER WHITE FIR BEARS
N26°45'W 128.8 FEET MARKED C1/4S8 IN UPPER
FACE, BT IN LOWER FACE.

A 13 1/2 INCH DIAMETER WHITE FIR BEARS
N63°11'E, 31.4 FEET MARKED C1/4S8 IN UPPER
FACE, BT IN LOWER FACE.

A 16 INCH DIAMETER PONDEROSA PINE BEARS
S42°37'E, 16.6 FEET MARKED C1/4S8 IN UPPER
FACE, BT IN LOWER FACE.

A 9 INCH DIAMETER PONDEROSA PINE BEARS
S1°36'W, 48.9 FEET MARKED C1/4S8 IN UPPER
FACE, BT IN LOWER FACE.

CENTERSOUTH ONE-SIXTEENTH CORNER SECTION
8. AT THE CORNER LOCATION I SET A 5/8 BY
30 INCH IRON PIN WITH A 2 INCH DIAMETER
ALUMINUM CAP, MARKED:

T38S R4E
CS1/16 + S8
PLS 1086

FROM WHICH:

AN 8 1/2 INCH DIAMETER WHITE FIR BEARS
S13°57'W 35.5 FEET MARKED CS1/16S8 IN
UPPER FACE, BT IN LOWER FACE.

A 7 1/2 INCH DIAMETER PONDEROSA PINE BEARS
N20°17'E, 28.2 FEET MARKED CS1/16S8 IN
UPPER FACE, BT IN LOWER FACE.

SOUTHWEST ONE-SIXTEENTH CORNER SECTION 8.
AT THE CORNER LOCATION I SET A 5/8 BY 30
INCH IRON PIN WITH A 2 INCH DIAMETER
ALUMINUM CAP, MARKED:

T38S R4E
SW1/16 + S8
PLS 1086

FROM WHICH:

AN 11 INCH DIAMETER LODGEPOLE PINE BEARS
N28°44'E 82.4 FEET MARKED SW1/16S8 IN
UPPER FACE, BT IN LOWER FACE.

A 12 1/2 INCH DIAMETER LODGEPOLE PINE
BEARS S59°03'W, 83.7 FEET MARKED SW1/16S8
IN UPPER FACE, BT IN LOWER FACE.

CENTERWEST ONE-SIXTEENTH CORNER SECTION 8.
 AT THE CORNER LOCATION I SET A 5/8 BY 30
 INCH IRON PIN WITH A 2 INCH DIAMETER
 ALUMINUM CAP, MARKED:
 T38S R4E
 CW1/16 + S8
 PLS 1086

FROM WHICH:

A 6.1/2 INCH DIAMETER WHITE FIR BEARS
 N36°04'W 7.5 FEET MARKED CW1/16S8 IN UPPER
 FACE, BT IN LOWER FACE.

A 7 INCH DIAMETER YEW WOOD BEARS
 N26°34'E, 12.4 FEET MARKED CW1/16S8 IN
 UPPER FACE, BT IN LOWER FACE.

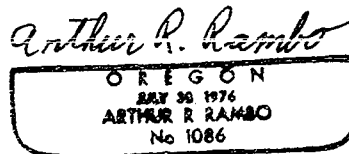
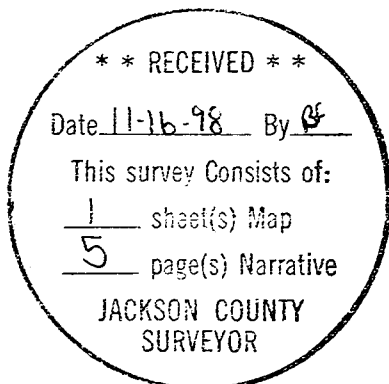
WEST ONE-SIXTEENTH CORNER COMMON TO
 SECTION 8 AND SECTION 17. AT THE CORNER
 LOCATION I SET A 5/8 BY 30 INCH IRON PIN
 WITH A 2 INCH DIAMETER ALUMINUM CAP,
 MARKED:

T38S R4E
 S8
 W1/16 -----
 S17
 PLS 1086

FROM WHICH:

AN 18 INCH DIAMETER PONDEROSA PINE BEARS
 S80°06'E 140.7 FEET MARKED W1/16S17 IN
 UPPER FACE, BT IN LOWER FACE.

A 13 INCH DIAMETER PONDEROSA PINE BEARS
 N5°37'W, 105.5 FEET MARKED W1/16S8 IN
 UPPER FACE, BT IN LOWER FACE.



REGISTRATION EXPIRES
 DECEMBER 31, 1998

TAX LOT 38-4E- (1008)-(2500)-(2900)- (800)