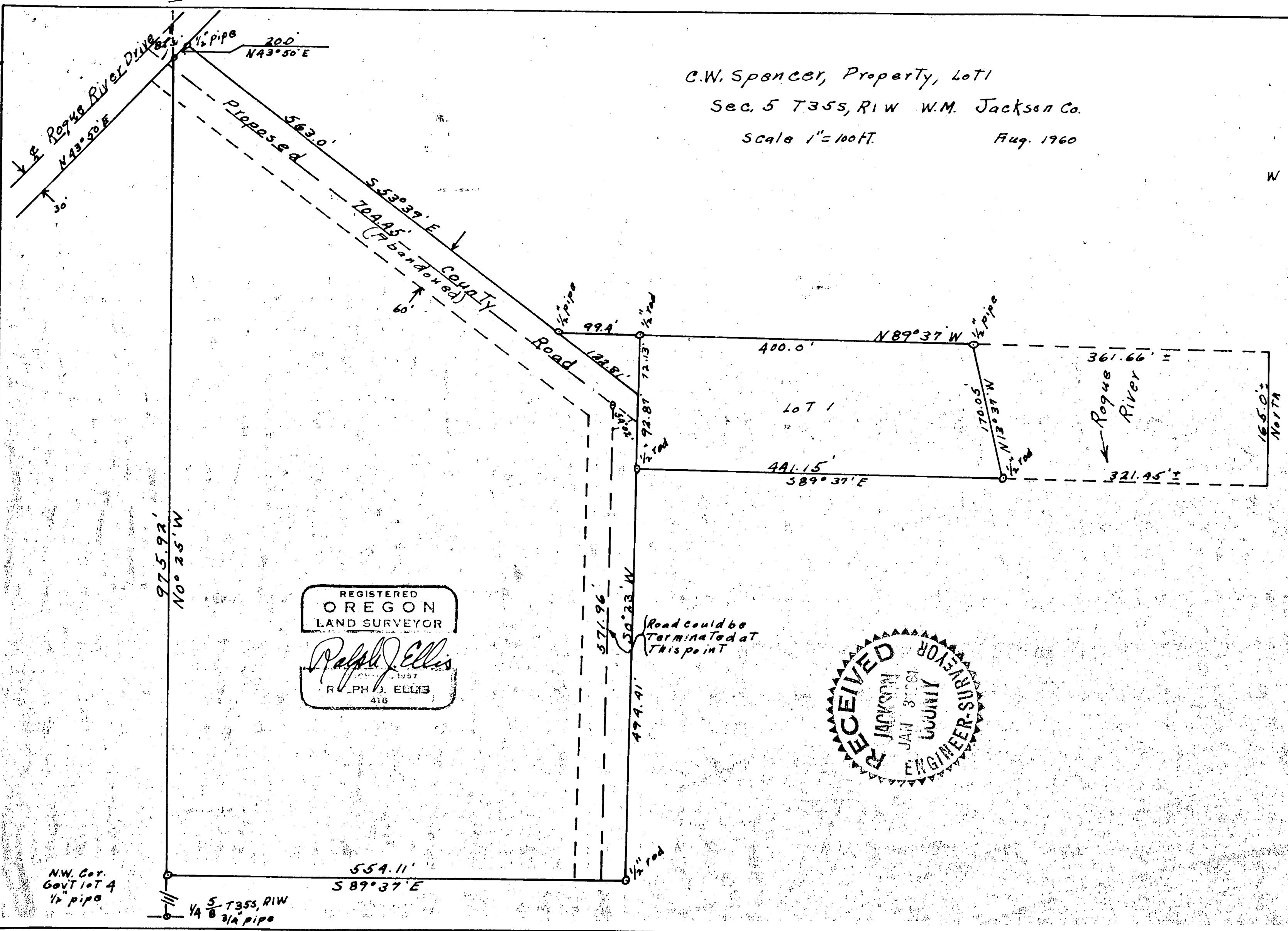
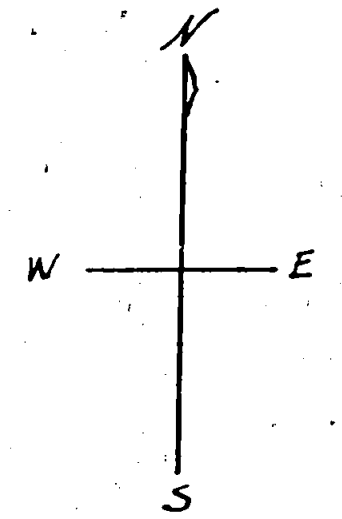
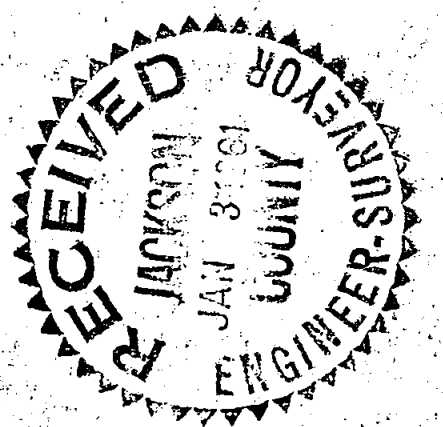


C.W. Spencer, Property, Lot 1  
 Sec. 5 T35S, R1W W.M. Jackson Co.  
 Scale 1" = 100ft. Aug. 1960



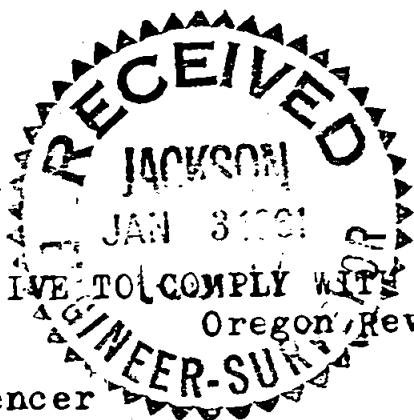
REGISTERED  
 OREGON  
 LAND SURVEYOR  
*Ralph J. Ellis*  
 RALPH J. ELLIS  
 416



Road could be terminated at this point

N.W. Cor. Govt lot 4 1/2" pipe

1/4 Sec 5 T35S, R1W 3/4" pipe



SURVEY NARRATIVE TO COMPLY WITH PARAGRAPH 209.250  
Oregon Revised Statutes

For: C.W. Spencer

Purpose:

to locate lot one in a row of three lots, the lot size designated by the owner and bound on the East by the Rogue River.

Procedure:

I had previously made a survey of the original area to be divided into the 3 lots (see survey made for C.W. Spencer in Oct. 1958) I knew the location of the N.W. corner of government lot 4, the corners I had set on the East right of way of Rogue River Drive and the corner on the North side of the whole property which established the North line of the lots to the river. I chained 99.4 feet along the said North line and set a 1/2" rod, then turned a 90° to the South as directed by the owner and intersected this line with a line produced from the N.W. corner previously set on the Right of way of Rogue River Drive through an angle corner previously set on the North line of the property and chained the distance. I then continued on the South line mentioned and chained 92.87 feet to make the West line of said lot 165.0 feet. I then turned a 90° to the left and chained the distance to a point on the right bank of the river, I then turned an angle to the pipe which I had set in 1958 as the N.E. corner of the property on the bank of the river and chained the distance for a closure as I had chained the North line of this property in 1958.

The two lines across the river are extensions of the two lines on land and the distances were computed, using the data obtained for the original survey.

