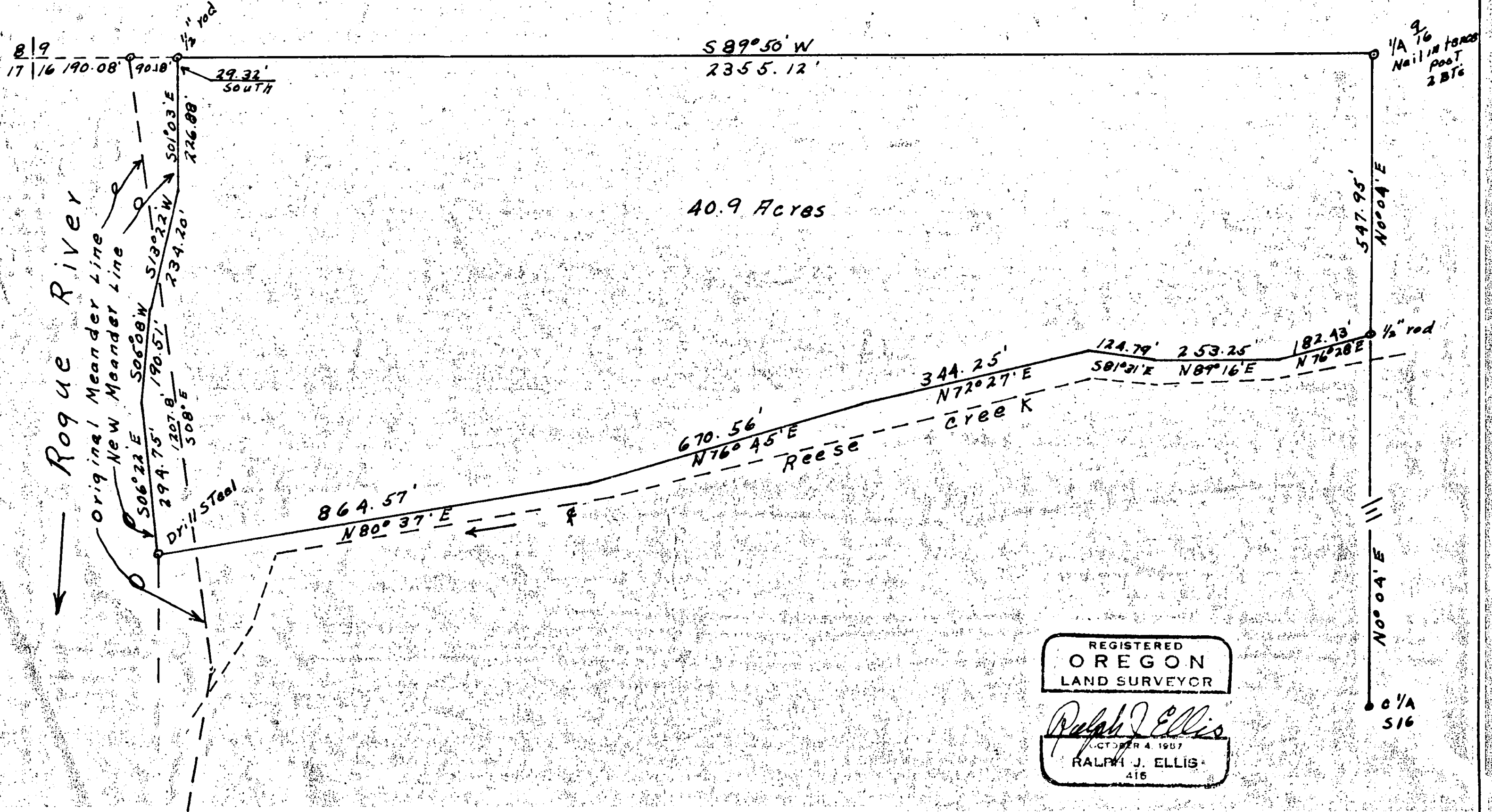
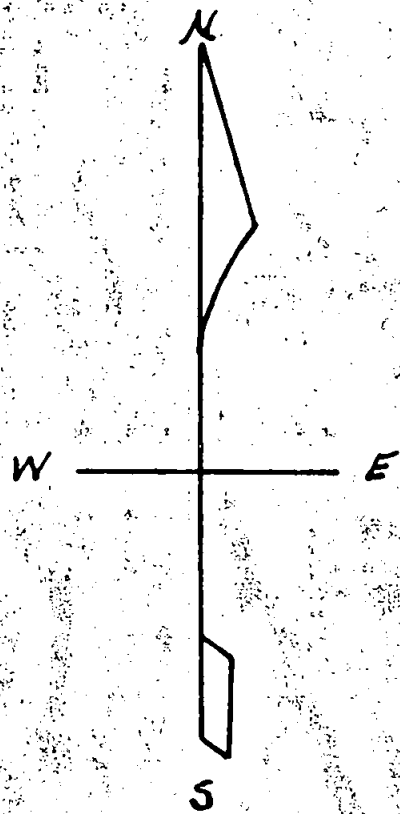
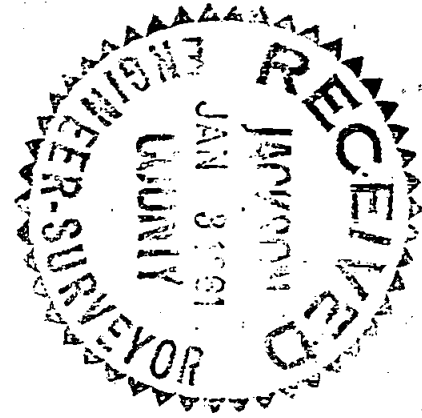


J. N. Gates Property

Sec. 16 T35S, R1W, W.M.

Jackson County, Ore.

Scale 1" = 200 FT.



SURVEY NARRATIVE TO COMPLY WITH PARAGRAPH 209.250
Oregon Revised Statutes

For: J.N. Gates

Purpose:

To locate 40 acres more or less out of a large tract, to be bound on the south by a line down Reese creek, on the East by the property line, on the North by the property line and on the West by the left bank of the Rogue River.

Procedure:

Mr. Gates showed me the 1 1/2" pipe that marks the C 1/4 of section 16. From the information I could find, I found the 1/4 ⁹/₁₆ since I had the bearing and distance between the two said corners I had a check on both. Since I had to establish two other tracts south of this tract I ran the line from the C 1/4 to the 1/4 establishing a point 547.95' south of the 1/4 and on the line designated for Reese creek. At the 1/4 ^{cor.} I turned the angle that gave me the bearing of the section line between section 9 and section 16 and chained the distance to a point on the left bank of the Rogue River. The section corner following in the river or having been washed out was not found.

I then followed a meander course down the left bank of the river to a point designated by the owner to mark the Reese creek line, I then followed a line up Reese creek designated by the owner, to the point of beginning.

