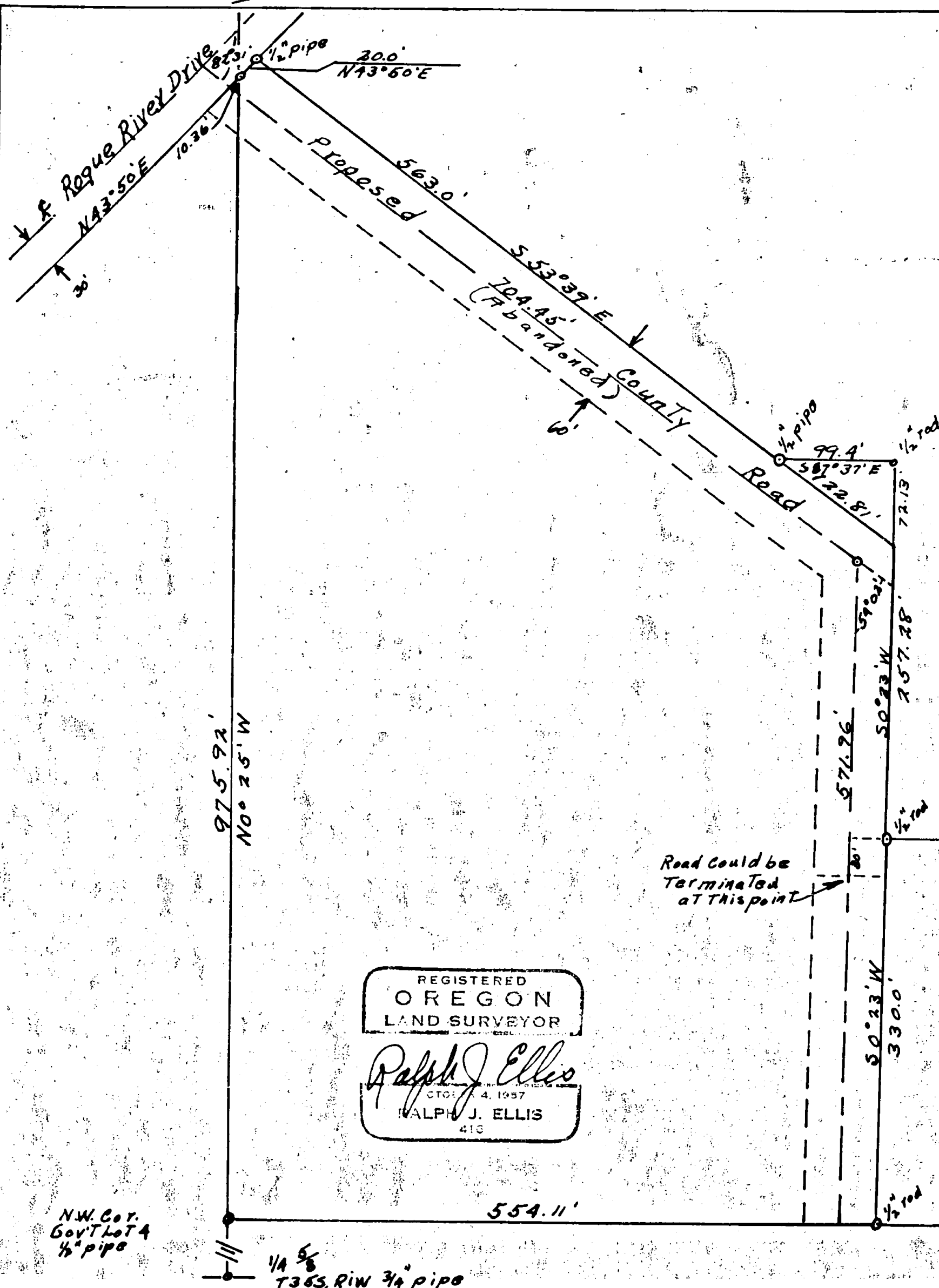
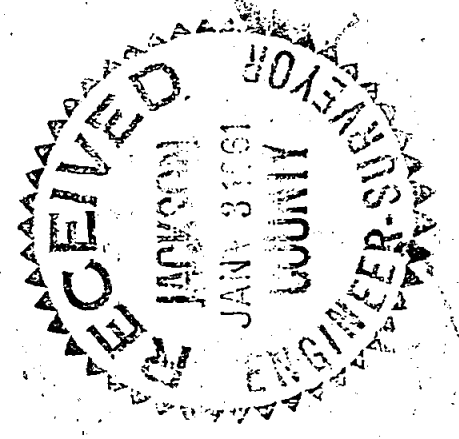
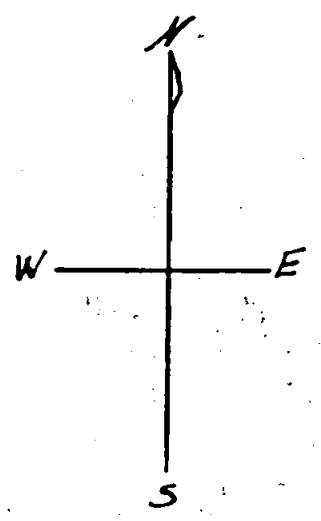


0651

OC 1/4 Sec. 5



c.w. Spencer, Property, Lot 3
 Sec. 5 T355, RIW W.M. Jackson Co.
 Scale 1"=100 ft. Aug. 1960



REGISTERED
 OREGON
 LAND SURVEYOR
Ralph J. Ellis
 CTO: 4, 1957
 RALPH J. ELLIS
 413

Road could be terminated at this point

N.W. Cor. Gov't Lot 4
 1/2" pipe

1/4 Sec. 5
 T355, RIW 3/4" pipe

Roque River

LOT 3

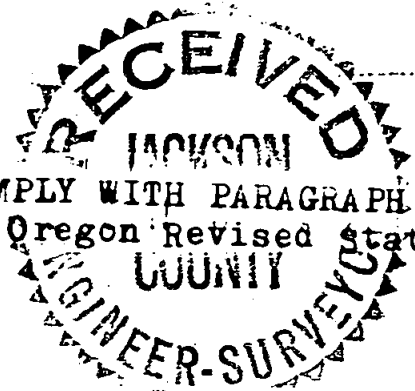
1590

1590

REGISTERED
OREGON
LAND SURVEYOR

Ralph J. Ellis

SURVEY NARRATIVE TO COMPLY WITH PARAGRAPH 209.250
RALPH J. ELLIS
416



Survey No. 1590

For: C.W. Spencer

Purpose:

To locate lot three in a row of three lots, the lot size designated by the owner and bound on the East by the Rogue River.

Procedure:

I had previously made a survey of the original area to be divided into the 3 lots (see survey made for C.W. Spencer in Oct. 1958) I knew the location of the N.W. corner of Government lot 4, the corners I had set on the East right of way of Rogue River Drive and the corner on the North side of the whole property which established the North line of the lots to the river. I chained 99.4 feet along the said North line and set a 1/2" rod, then turned a 90° to the South as directed by the owner and intersected this line with a line produced from the N.W. corner previously set on the right of way of Rogue River Drive through an angle corner previously set on the North line of the property and chained the distance. I then continued on the South line mentioned and chained the distance to set the N.W. corner, then continued South to an intersection on the South boundary of the property, said line was established in 1958. I then chained along the mentioned South boundary to a pipe that had been set in 1958 on the river bank, then turned an angle chained along the river bank to a point of angle on the bank, then continued into the point previously set for a corner of lot 2 for a closeure, having previously chained the South line of Lot 2.

The two lines across the river are extensions of the two lines on land and the distances were computed, using the data obtained for the original survey.

(See Albert A. and Violet Farris for Lot 2 survey)