

ROYAL HEIGHTS

A RE-SUBDIVISION OF PART OF LOTS 5 & 6 AMY'S COTTAGE ADDITION TO CENTRAL POINT, JACKSON COUNTY, OREGON.

DEDICATION

KNOW ALL MEN BY THESE PRESENTS, That we N.A. MEAD and Rachel M. Mead, are the owners in fee simple of the lands hereon described, and that we have subdivided the same into lots, blocks and streets as shown hereon, and the number and size of the lots and lengths of all lines are plainly set forth, and that this plat is a correct representation of the said subdivision, and we do hereby dedicate to the public for public use all streets and alleys and easements for public utilities, shown hereon, and we do hereby designate said subdivision as ROYAL HEIGHTS.

IN WITNESS WHEREOF we have hereunto set our hands and seals this 28 day of Jan 1959

H. H. Shaw WITNESS *N. A. Mead*
Thomas C. Lyons WITNESS *Rachel M. Mead*

SEAL
SEAL

STATE OF OREGON }
COUNTY OF JACKSON } s.s.
January 28 A.D. 1959

Personally appeared the above named N.A. Mead and Rachel M. Mead and acknowledged the foregoing instrument to be their voluntary act and deed. Before me:

Stewart Dallaire
NOTARY PUBLIC FOR OREGON.

My commission expires the 15th day of September, 1962

SURVEYOR'S CERTIFICATE

STATE OF OREGON }
COUNTY OF JACKSON } s.s.

I, L.N. Dow, a duly registered surveyor of the State of Oregon, being first duly sworn do hereby certify that I have correctly surveyed and marked with proper monuments as provided by law the tract of land hereon shown and the said plat is a correct representation of the same, and the following is an accurate description of the boundary lines: Beginning at a concrete monument with lead tablet set six inches below the surface of the ground on the west line of Upton Road at a point N 0° 16' W 648.00 feet from the east 1/16th corner on the east-west centerline of Section 3, said 1/16th corner being S 89° 53' 50" W 1330.9 feet from the 1/4 Section corner on the east line of Section 3, Township 37 South, Range 2 West, Willamette Meridian, Jackson County, Oregon; thence S 0° 16' E along the west line of Upton Road 648.00 feet to the east 1/16th corner on the east-west centerline of Section 3, thence S 89° 53' 50" W 762.00 feet, thence N 0° 16' W 648.00 feet, thence N 89° 53' 50" E 762.00 feet to the point of beginning.

Subscribed and sworn to before me this 26 day of January, 1959
L. N. Dow
SURVEYOR

My commission expires the 6th day of September, 1960
John C. Smith
NOTARY PUBLIC FOR OREGON

Examined and approved by the City of Central Point Planning Commission in regular session this the 27th day of January, 1959

Attest:
John H. Smock
SECRETARY

Del Bartley
PRESIDENT

Examined and approved by the Rogue River Valley Irrigation District in regular session this the 6 day of February, 1959

Attest:
Harold W. Supton
SECRETARY

Otto Bohmert
PRESIDENT

Examined and approved this 13th day of Feb., 1959

Ray Schumacher
COUNTY ASSESSOR

All taxes paid in full to date this the 13th day of February, 1959

Joseph D. Walsh
COUNTY SHERIFF

Examined and recommended for approval of the County Court.

Paul B. Jennings
COUNTY SURVEYOR

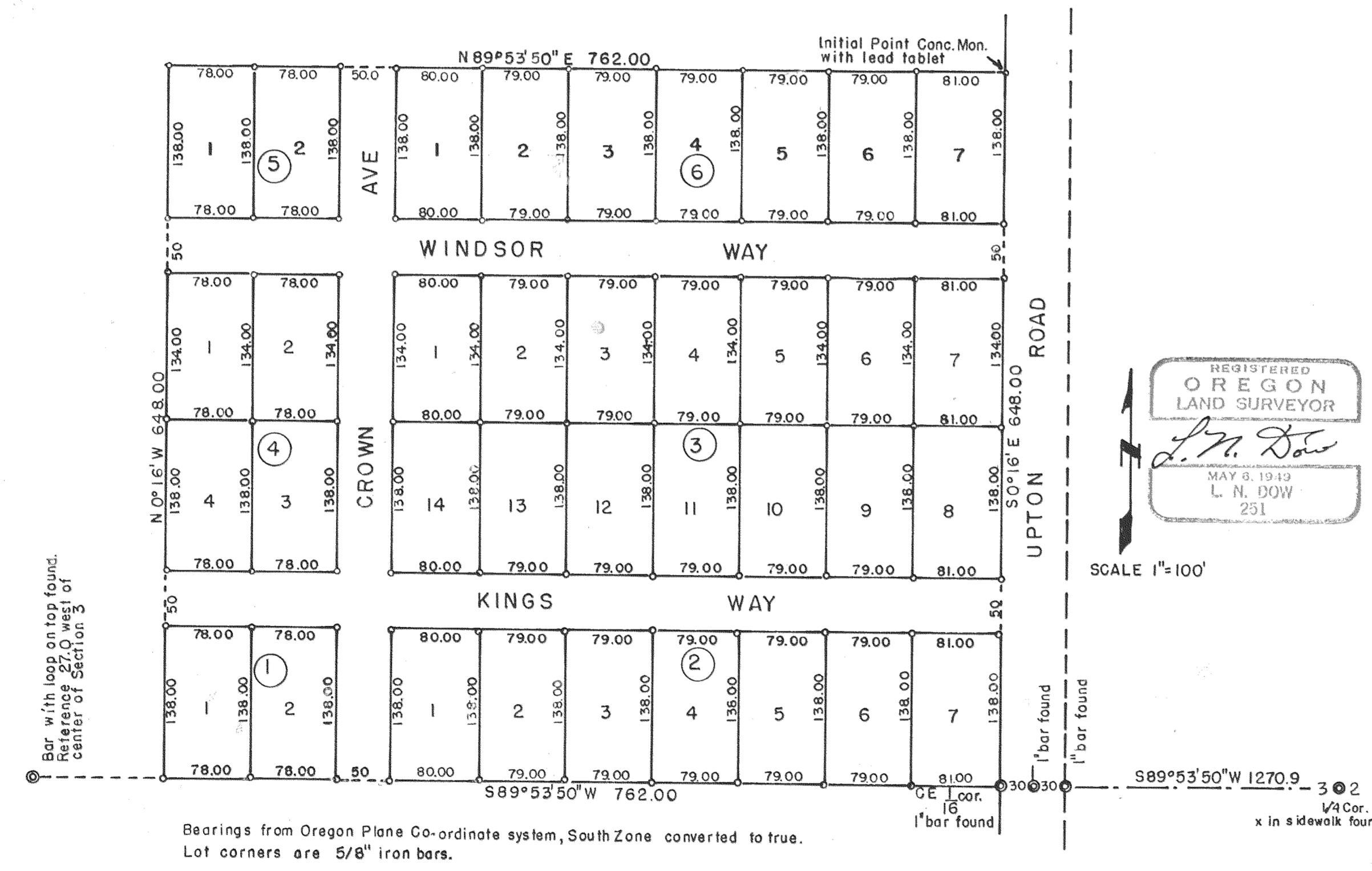
For order of the County Court approving this plat see Volume 48 Page 656, of County Commissioners' Journal of Proceedings

E. M. Madda
COUNTY CLERK

462216
Filed for record this 20 day of February, 1959, at 10:42 o'clock A.M. and recorded in 8 Volume of Plats at Page 22 of records of Jackson County, Oregon.

E. M. Madda
COUNTY RECORDER

I hereby certify that this tracing is an exact copy of the original plat filed with the County Clerk.
L. N. Dow



Written narrative to accompany plat for survey of Royal Heights Subdivision.

Survey completed November 1960.

For N.A. Mead, Central Point, Oregon.

Procedure: Having previously laid out Royal Heights Subdivision and having the corners intact with ties to 1/4 Section Corner on the east line of Section 3, also having tied the center of section (pipe now slid into creek) it became necessary to locate the north line of Lot 7 Amy's Cottage Addition, for the north line of this subdivision. This was done was done by survey, mapped and filed as survey NO. 1556 on file at the office of the County Surveyor, Jackson County, Oregon.

Then by using the existing points of Royal Heights Subdivision we set a concrete monument at the northwest corner of said subdivision for the initial point and ran N 0° 16' W 324.36 feet and set a concrete monument with tablet on the north line, which point was to have been the northeast corner of this unit of lots, it turned out however that the owner requested all lots in this tier to be completed to the west end of his property, which is the north and south center of Section 3. We then produced control points westerly from previous survey control and staked all lots as shown on the subdivision plat.

REGISTERED
 OREGON
 LAND SURVEYOR

L. N. Dow

MAY 6, 1949
 L. N. DOW
 251

RECEIVED
 JACKSON
 DEC 23 1960
 COUNTY
 ENGINEER-SURVEYOR