

PROPERTY SURVEY:

SECTION 35, T.33 S., R.2 W., W.M.
SECTION 10,11,12,13, & 14, T. 34 S., R. 2 W., W.M.
JACKSON COUNTY, OREGON
AUGUST, 1998

SURVEY BY:
TONY HOSTETTER
540 EVERETT ST.
COOS BAY, OR 97420

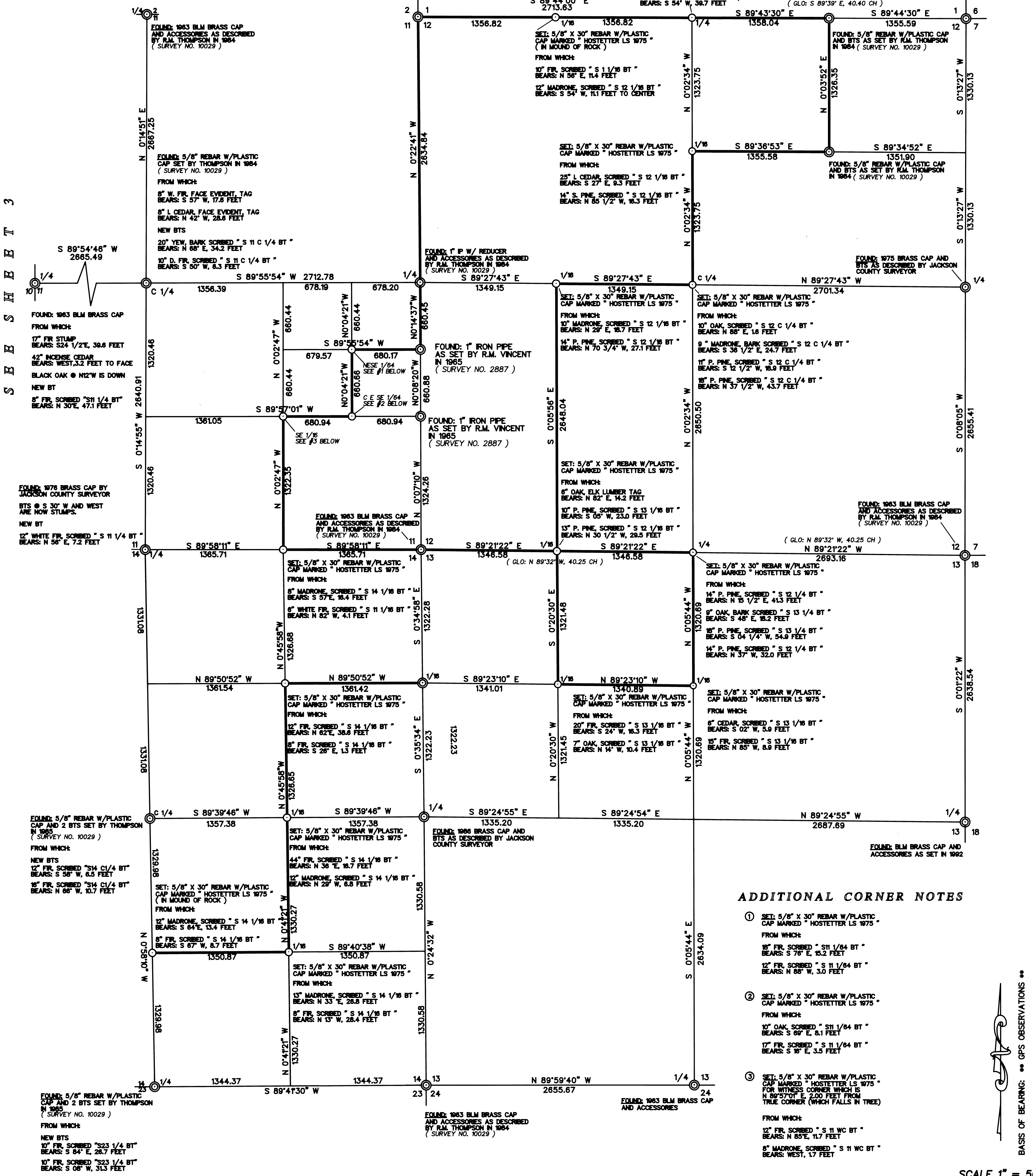
SURVEY FOR:
BOISE CASCADE CORPORATION
PO BOX 100
MEDFORD, OREGON 97501

STATE PLANE COORDINATES

OREGON SOUTH ZONE, NAD 83
BASED ON GPS TIE TO JACKSON COUNTY
STATION NO. 102 ON LONG BRANCH ROAD,
WHICH WAS ESTABLISHED IN 1993 BY
EAGLE GPS SURVEY CORP.

W 1/4 CORNER SECTION 11 N 360150.08 E 4271202.33
S 1/4 CORNER SECTION 13 N 351980.11 E 4279058.93
E 1/4 CORNER SECTION 13 N 354508.93 E 4281814.86

S E E S H E E T 2



ADDITIONAL CORNER NOTES

- 1 SET: 5/8" X 30" REBAR W/PLASTIC CAP MARKED "HOSTETTER LS 1975"
FROM WHICH:
18" FIR SCRIBED "S 11/64 BT"
BEARS: S 78° E, 16.2 FEET
12" FIR SCRIBED "S 11/64 BT"
BEARS: N 88° W, 3.0 FEET
- 2 SET: 5/8" X 30" REBAR W/PLASTIC CAP MARKED "HOSTETTER LS 1975"
FROM WHICH:
18" OAK SCRIBED "S 11/64 BT"
BEARS: S 89° E, 8.1 FEET
17" FIR SCRIBED "S 11/64 BT"
BEARS: S 10° E, 3.5 FEET
- 3 SET: 5/8" X 30" REBAR W/PLASTIC CAP MARKED "HOSTETTER LS 1975"
FOR WITNESS CORNER WHICH IS N 89° 01' E 2.00 FEET FROM TRUE CORNER (WHICH FALLS IN TREE)
FROM WHICH:
12" FIR SCRIBED "S 11 WC BT"
BEARS: N 85° E, 11.7 FEET
8" MADRONE SCRIBED "S 11 WC BT"
BEARS: WEST, 1.7 FEET

BASIS OF BEARING: ** GPS OBSERVATIONS **

SCALE 1" = 500'

NARRATIVE:
THIS SURVEY WAS PERFORMED IN ORDER TO DETERMINE PROPERTY BOUNDARIES AS SHOWN.
OFFSETS TO TRUE LINE WERE CALCULATED. LINE WAS MARKED BY BLUE FLAGGING AND BOTH SIDES OF LINE WERE BLAZED AND PAINTED. ALUMINUM TAGS PLACED INTERMITTENTLY ALONG LINE WERE NAILED ON ROOT COLLARS BELOW BLAZES (ONLY PLACED ON TREES WITHIN 1 FOOT OF TRUE LINE).
BEARING TREE MEASUREMENTS TO ORIGINAL AND OTHER FOUND BTS ARE LISTED TO THE CENTER OF THE TREE UNLESS OTHERWISE NOTED. MEASUREMENTS LISTED FOR BTS MARKED IN THIS SURVEY ARE TO THE HEAD OF 6" SPIKES PLACED IN ROOT COLLARS (BELOW FACE). TAGS PLACED ON ALL NEW BEARING TREES LIST BEARING AND DISTANCE FROM SPIKE TO CORNER MONUMENT.
EQUIPMENT USED INCLUDED A NIKON DTM-730 TOTAL STATION AND 3 ASHTECH DIMENSION GPS RECEIVERS. BEARINGS ARE BASED ON GPS OBSERVATIONS AND HAVE BEEN ROTATED -137°56". AVERAGE COMBINED SCALE FACTOR 1.0001387 APPLIED TO GPS MEASUREMENTS.

- LEGEND:**
- CORNER FOUND: (Symbol: circle with dot)
 - CORNER SET: (Symbol: circle)
 - LINE BLAZED: (Symbol: horizontal line)
 - PREVIOUS SURVEY RECORD: (Symbol: parentheses)

RECEIVED

Date: 9-3-98 By: [Signature]

This survey consists of 3 sheet(s) Map
0 page(s) Narrative

JACKSON COUNTY SURVEYOR

REGISTERED PROFESSIONAL LAND SURVEYOR

OREGON

TONY HOSTETTER 1975

EXPIRES: 6/30/99

BWELLPLGCD

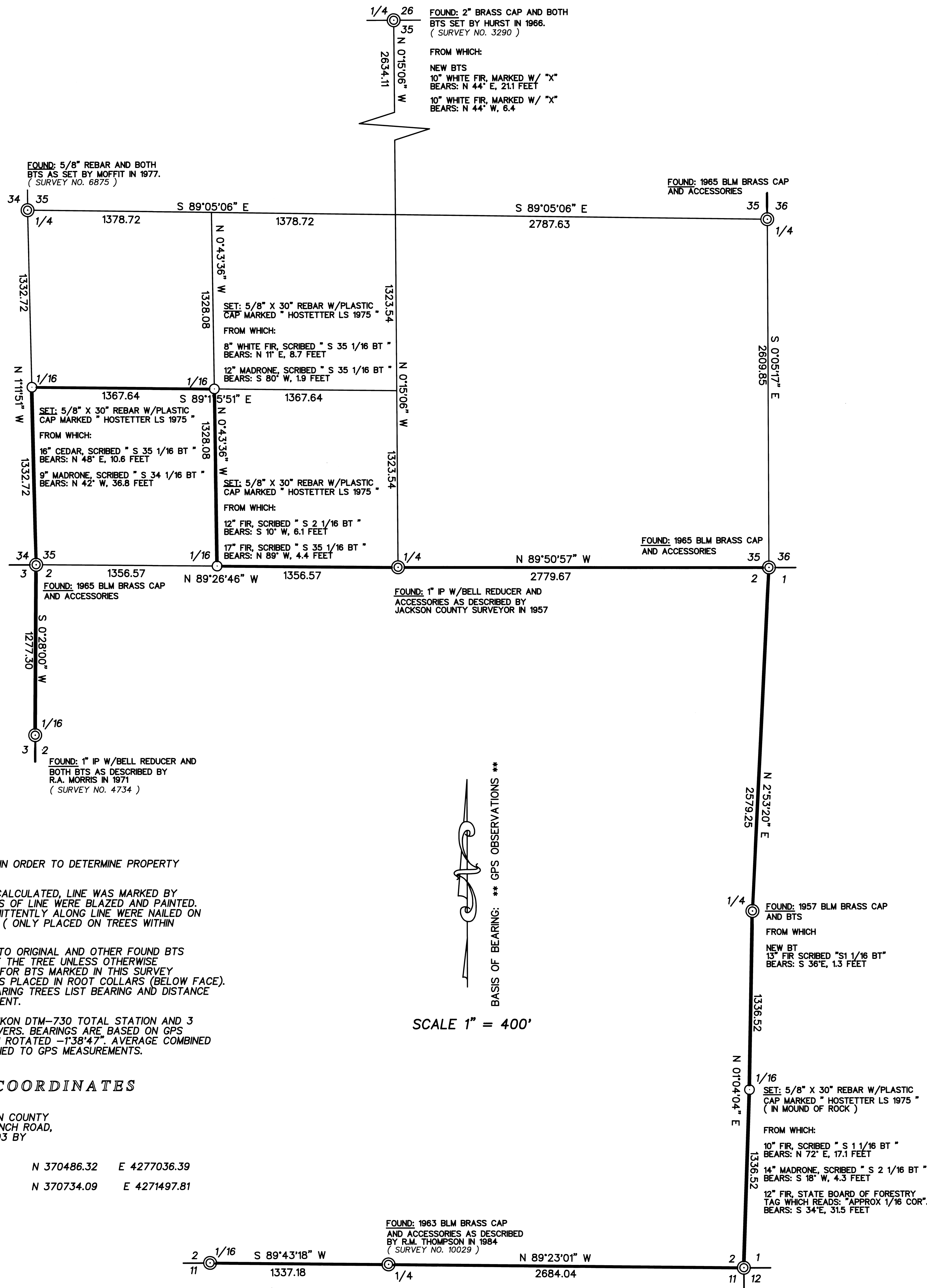
15873

PROPERTY SURVEY:

SECTION 2,10,11,12,13,& 14, T. 34 S., R. 2 W., W.M.
SECTION 35, T. 33 S., R. 2 W., W.M.
JACKSON COUNTY, OREGON
AUGUST, 1998

SURVEY BY: TONY HOSTETTER
540 EVERETT ST.
COOS BAY, OR 97420

SURVEY FOR: BOISE CASCADE CORPORATION
PO BOX 100
MEDFORD, OR 97501



NARRATIVE:

THIS SURVEY WAS PERFORMED IN ORDER TO DETERMINE PROPERTY BOUNDARIES AS SHOWN.

OFFSETS TO TRUE LINE WERE CALCULATED, LINE WAS MARKED BY BLUE FLAGGING AND BOTH SIDES OF LINE WERE BLAZED AND PAINTED. ALUMINUM TAGS PLACED INTERMITTENTLY ALONG LINE WERE NAILED ON ROOT COLLARS BELOW BLAZES (ONLY PLACED ON TREES WITHIN 1 FOOT OF TRUE LINE).

BEARING TREE MEASUREMENTS TO ORIGINAL AND OTHER FOUND BTS ARE LISTED TO THE CENTER OF THE TREE UNLESS OTHERWISE NOTED. MEASUREMENTS LISTED FOR BTS MARKED IN THIS SURVEY ARE TO THE HEAD OF 6" SPIKES PLACED IN ROOT COLLARS (BELOW FACE). TAGS PLACED ON ALL NEW BEARING TREES LIST BEARING AND DISTANCE FROM SPIKE TO CORNER MONUMENT.

EQUIPMENT USED INCLUDED A NIKON DTM-730 TOTAL STATION AND 3 ASHTECH DIMENSION GPS RECEIVERS. BEARINGS ARE BASED ON GPS OBSERVATIONS AND HAVE BEEN ROTATED -138'47". AVERAGE COMBINED SCALE FACTOR 1.0001730 APPLIED TO GPS MEASUREMENTS.

STATE PLANE COORDINATES

OREGON SOUTH ZONE, NAD 83
BASED ON GPS TIE TO JACKSON COUNTY
STATION NO. 102 ON LONG BRANCH ROAD,
WHICH WAS ESTABLISHED IN 1993 BY
EAGLE GPS SURVEY CORP.

E 1/4 CORNER, SECTION 35	N 370486.32	E 4277036.39
W 1/4 CORNER SECTION 35	N 370734.09	E 4271497.81

LEGEND:

CORNER FOUND:

CORNER SET:

LINE BLAZED:

PREVIOUS SURVEY RECORD:

SCALE 1" = 400'

S E E S H E E T 1



PROPERTY SURVEY:

SECTION 35, T. 33 S., R. 2 W., W.M.
 SECTION 2,10,11,12,13,& 14, T. 34 S., R. 2 W., W.M.
 JACKSON COUNTY, OREGON
 AUGUST, 1998

SURVEY BY: TONY HOSTETTER
 540 EVERETT ST.
 COOS BAY, OR 97420

SURVEY FOR: BOISE CASCADE CORPORATION
 PO BOX 100
 MEDFORD, OR 97501

NARRATIVE:

THIS SURVEY WAS PERFORMED IN ORDER TO DETERMINE PROPERTY BOUNDARIES AS SHOWN.

OFFSETS TO TRUE LINE WERE CALCULATED, LINE WAS MARKED BY BLUE FLAGGING AND BOTH SIDES OF LINE WERE BLAZED AND PAINTED. ALUMINUM TAGS PLACED INTERMITTENTLY ALONG LINE WERE NAILED ON ROOT COLLARS BELOW BLAZES (ONLY PLACED ON TREES WITHIN 1 FOOT OF TRUE LINE).

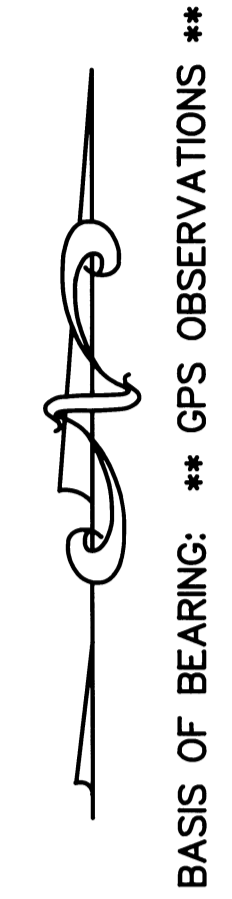
BEARING TREE MEASUREMENTS TO ORIGINAL AND OTHER FOUND BTS ARE LISTED TO THE CENTER OF THE TREE UNLESS OTHERWISE NOTED. MEASUREMENTS LISTED FOR BTS MARKED IN THIS SURVEY ARE TO THE HEAD OF 6" SPIKES PLACED IN ROOT COLLARS (BELOW FACE). TAGS PLACED ON ALL NEW BEARING TREES LIST BEARING AND DISTANCE FROM SPIKE TO CORNER MONUMENT.

EQUIPMENT USED INCLUDED A NIKON DTM-730 TOTAL STATION AND 3 ASHTECH DIMENSION GPS RECEIVERS. BEARINGS ARE BASED ON GPS OBSERVATIONS AND HAVE BEEN ROTATED -1°39'13". AVERAGE COMBINED SCALE FACTOR 1.0001790 APPLIED TO GPS MEASUREMENTS.

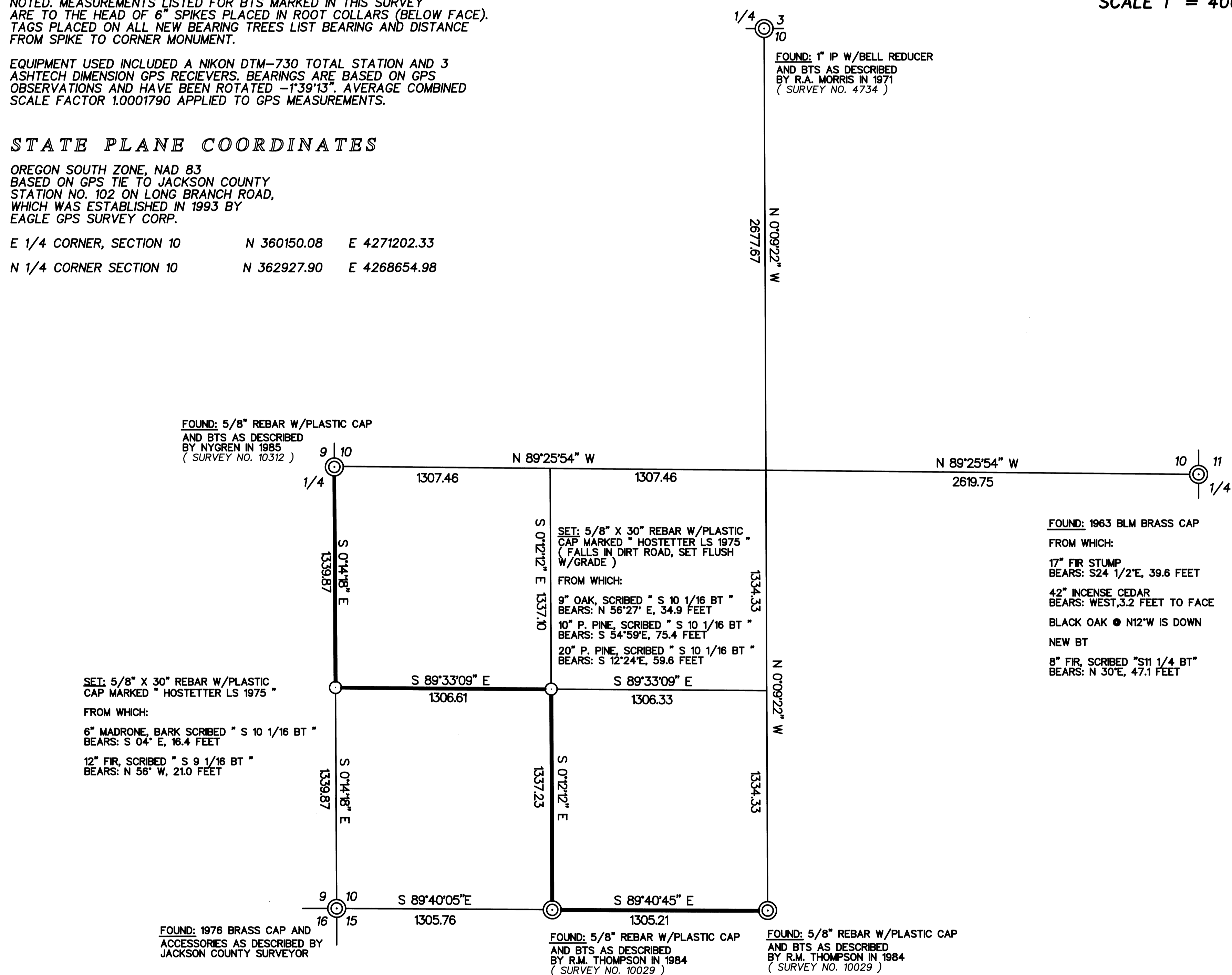
STATE PLANE COORDINATES

OREGON SOUTH ZONE, NAD 83
 BASED ON GPS TIE TO JACKSON COUNTY
 STATION NO. 102 ON LONG BRANCH ROAD,
 WHICH WAS ESTABLISHED IN 1993 BY
 EAGLE GPS SURVEY CORP.

E 1/4 CORNER, SECTION 10 N 360150.08 E 4271202.33
 N 1/4 CORNER SECTION 10 N 362927.90 E 4268654.98



SCALE 1" = 400'



- LEGEND:**
- CORNER FOUND:
 - CORNER SET:
 - LINE BLAZED:
 - PREVIOUS SURVEY RECORD:



15873