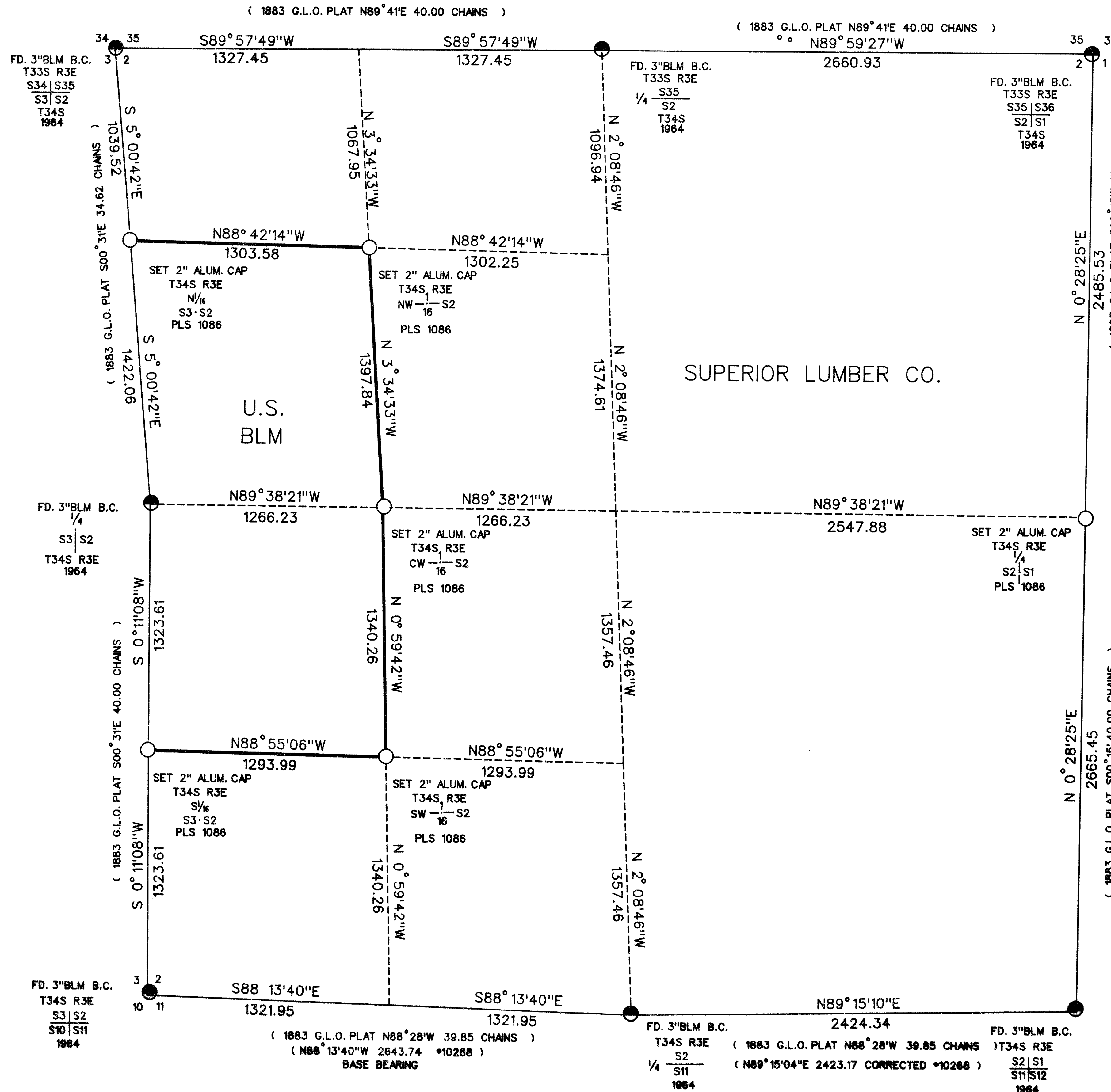


MAP OF SURVEY LOCATED IN THE WEST HALF OF SEC. 2, TWP. 34 SOUTH, RANGE 3 EAST, WILLAMETTE MERIDIAN



SURVEY FOR
SUPERIOR LUMBER CO.
P.O. BOX 250
GLENDALE, OREGON 97442

SURVEY BY
ARTHUR R. RAMBO
735 VISTA PARK DRIVE
EAGLE POINT, OREGON 97524

LEGEND

- FOUND 3" BLM BRASS CAP
- SET 5/8" BY 30" IRON PIN WITH 2" ALUM. CAP MARKED PLS 1086
- LINE MARKED AND POSTED THIS SURVEY
- () RECORD DATA

BASIS OF BEARING

SURVEY NUMBER 10268

SCALE

1" = 500'

DATE

JULY 14, 1998

REGISTERED
**PROFESSIONAL
LAND SURVEYOR**
Arthur R. Rambo
OREGON
JULY 30, 1976
ARTHUR R. RAMBO
NO 1086

EXPIRES DECEMBER 31, 1998

** RECEIVED **
Date 7-15-98 By AR
This survey consists of:
1 sheet(s) Map
4 page(s) Narrative
JACKSON COUNTY
SURVEYOR

TAX LOT No. 34-3E-00200

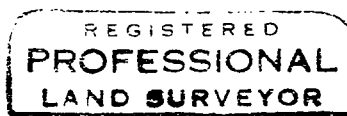
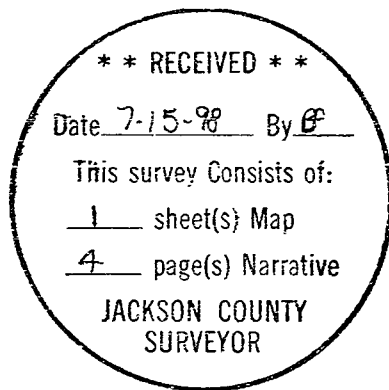
SOUTH ONE-SIXTEENTH CORNER COMMON TO SECTION 2 AND SECTION 3
 TOWNSHIP 34 SOUTH RANGE 3 EAST. AT THE CORNER POINT I SET A
 5/8" BY 30" IRON PIN WITH A 2" DIAMETER ALUM. CAP MARKED:

T34S R3E
 S
 1
 S3--- ---S2
 16
 PLS 1086

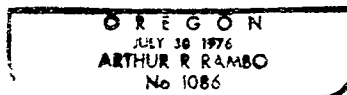
FROM WHICH:

A 9 INCH DIAMETER FIR BEARS N84°27'E, 10.9 FEET
 MARKED S1/16S2 IN UPPER FACE, BT IN LOWER FACE.

A 22 INCH DIAMETER FIR BEARS S15°11'W, 15.1 FEET
 MARKED S1/16S3 IN UPPER FACE, BT IN LOWER FACE.



Arthur R. Rambo



REGISTRATION EXPIRES
 DECEMBER 31, 1998

TAX LOT 34-3E-00200

FROM WHICH:

A 7.5 INCH DIAMETER FIR BEARS S40° 36'E, 16.4 FEET MARKED N1/16S2 IN UPPER FACE, BT IN LOWER FACE.

AN 12 INCH DIAMETER FIR BEARS S47° 11'E, 35.8 FEET MARKED N1/16S3 IN UPPER FACE, BT IN LOWER FACE.

NORTHWEST ONE-SIXTEENTH CORNER SECTION 2 TOWNSHIP 34 SOUTH RANGE 3 EAST. AT THE CORNER POINT I SET A 5/8" BY 30" IRON PIN WITH A 2" DIAMETER ALUM. CAP MARKED:

T34S R3E
1
NW--- ---S2
16
PLS 1086

FROM WHICH:

A 14 INCH DIAMETER FIR BEARS S13° 01'W, 48.4 FEET MARKED NW1/16S2 IN UPPER FACE, BT IN LOWER FACE.

A 9 INCH DIAMETER FIR BEARS N12° 59'E, 31.6 FEET MARKED NW1/16S8 IN UPPER FACE, BT IN LOWER FACE.

CENTER WEST ONE-SIXTEENTH CORNER SECTION 2 TOWNSHIP 34 SOUTH RANGE 3 EAST. AT THE CORNER POINT I SET A 5/8" BY 30" IRON PIN WITH A 2" DIAMETER ALUM. CAP MARKED:

T34S R3E
1
CW--- ---S2
16
PLS 1086

FROM WHICH:

A 13 INCH DIAMETER FIR BEARS S29° 08'W, 19.1 FEET MARKED CW1/16S2 IN UPPER FACE, BT IN LOWER FACE.

A 6.5 INCH DIAMETER FIR BEARS N03° 58'W, 12.9 FEET MARKED CW1/16S2 IN UPPER FACE, BT IN LOWER FACE.

SOUTHWEST ONE-SIXTEENTH CORNER SECTION 2 TOWNSHIP 34 SOUTH RANGE 3 EAST. AT THE CORNER POINT I SET A 5/8" BY 30" IRON PIN WITH A 2" DIAMETER ALUM. CAP MARKED:

T35S R3W
1
SW--- ---S2
16
PLS 1086

FROM WHICH:

AN 11.5 INCH DIAMETER FIR BEARS N34° 04'E, 25.4 FEET MARKED SW1/16S2 IN UPPER FACE, BT IN LOWER FACE.

A 9 INCH DIAMETER FIR BEARS N61° 39'W, 42.1 FEET MARKED SW1/16S2 IN UPPER FACE, BT IN LOWER FACE.

FROM WHICH:

I MARK NEW TREE.
AN 8.5 INCH DIAMETER HEMLOCK BEARS
S11° 33' E, 47.1 FEET MARKED 1/4S2 IN UPPER
FACE, BT IN LOWER FACE.

AT THE SECTION CORNER COMMON TO SECTION
34 AND 35 TOWNSHIP 33 SOUTH RANGE 3 EAST,
AND SECTION 2 AND 3 TOWNSHIP 34 SOUTH
RANGE 3 EAST I FOUND A 3" DIAMETER BLM
BRASS CAP.

FROM WHICH:

I MARK NEW TREE.
AN 8.5 INCH DIAMETER YEW BEARS N35° 26' E,
64.9 FEET MARKED S35 IN UPPER FACE, BT IN
LOWER FACE.
A 9 INCH DIAMETER FIR BEARS S51° 20' W,
53.7 FEET MARKED S3 IN UPPER FACE, BT IN
LOWER FACE.

CORNERS SET THIS SURVEY

ALL MEASUREMENTS TO BEARING TREES ARE TO THE CENTER OF
TREE AT BASE UNLESS OTHERWISE STATED. BEARING TREES
HAVE A BRASS WASHER MARKED LS1086 NAILED TO LOWER
FACE.

ONE-QUARTER CORNER COMMON TO SECTION 1 AND SECTION 2 TOWNSHIP
34 SOUTH RANGE 3 EAST. AT THE CORNER POINT I SET A 5/8 BY 30
INCH IRON PIN WITH A 2 INCH DIAMETER ALUM. CAP MARKED:

T34S R3E
1/4
S2 + S1
PLS 1086

FROM WHICH:

A 4.5 INCH DIAMETER FIR BEARS N32° 26' W, 38.0 FEET
MARKED 1/4S2 IN UPPER FACE, BT IN LOWER FACE.

A 6 INCH DIAMETER FIR BEARS N39° 51' E, 29.9 FEET
MARKED 1/4S1 IN UPPER FACE, BT IN LOWER FACE.

A 13 INCH DIAMETER FIR BEARS S54° 31' E, 43.5 FEET
MARKED 1/4S1 IN UPPER FACE, BT IN LOWER FACE.

AN 8 INCH DIAMETER CEDAR BEARS S18° 31' , 15.9 FEET
MARKED 1/4S2 IN UPPER FACE, BT IN LOWER FACE.

A 2 INCH DIAMETER IRON PIPE BEARS S42° 26' W, 40.2
FEET MARKED
M
E
S2 D S1
C
O

NORTH ONE-SIXTEENTH CORNER COMMON TO SECTION 2 AND 3 TOWNSHIP
34 SOUTH RANGE 3 EAST. AT THE CORNER POINT I SET A 5/8 BY 30
INCH IRON PIN WITH A 2 INCH DIAMETER ALUM. CAP MARKED:

T34S R3E
N
1
S3 --- ---S2
16
PLS 1086

SURVEY NARRATIVE TO COMPLY WITH O.R.S. 209.250

LOCATION: WEST HALF OF SECTION 2, TOWNSHIP 34 SOUTH,
RANGE 3 EAST, WILLAMETTE MERIDIAN, JACKSON
COUNTY, OREGON.

SURVEY FOR: SUPERIOR LUMBER CO.
P.O. BOX 250
GLENDALE, OREGON 97442

SURVEY BY: RAMBO SURVEYING
ARTHUR R. RAMBO LS1086
735 VISTA PARK DRIVE
EAGLE POINT, OREGON 97524

DATE: JULY 14, 1998

BASIS OF BEARING: SURVEY NUMBER 10268

PURPOSE: TO MARK AND POST THE BOUNDARY LINE AND SET
THE CORNERS COMMON TO SUPERIOR LUMBER CO.
AND THE BUREAU OF LAND MANAGEMENT (MEDFORD
DISTRICT) OWNERSHIP WITHIN SECTION 2,
TOWNSHIP 34 SOUTH, RANGE 3 EAST, AS SHOWN
ON THE PLAT TO ACCOMPANY THIS NARRATIVE.

PROCEDURE: A SEARCH OF RECORDS REVEALED THAT ALL THE
EXTERIOR CORNERS OF SAID SECTION 2, EXCEPT
FOR THE ONE-QUARTER CORNER COMMON TO
SECTION 1 AND 2, NEEDED FOR CONTROL OF
THIS SURVEY WERE REESTABLISHED FROM
ORIGINAL EVIDENCE.

I RAN A TRAVERSE TYING TO THE CORNERS
NEEDED FOR CONTROL OF THIS SURVEY.

THE SUBDIVISION OF SAID SECTION 2 WAS THEN
COMPUTED. THEN LINES NEEDED WERE RAN,
CORNERS WERE SET, AND THE LINES WERE
MARKED AND POSTED.

NEW TREES MARKED AT EXISTING CORNERS

ALL TREES ARE MEASURED TO THE CENTER OF
THE TREE AT THE BASE UNLESS OTHER WISE
STATED. ALL TREES HAVE A BRASS WASHER
MARKED PLS 1086 NAILED TO THE LOWER FACE.

AT THE ONE-QUARTER CORNER COMMON TO
SECTION 35, TOWNSHIP 33 SOUTH, RANGE 3
EAST, AND SECTION 2, TOWNSHIP 34 SOUTH,
RANGE 3 EAST, I FOUND A 3" DIAMETER BLM
BRASS CAP.