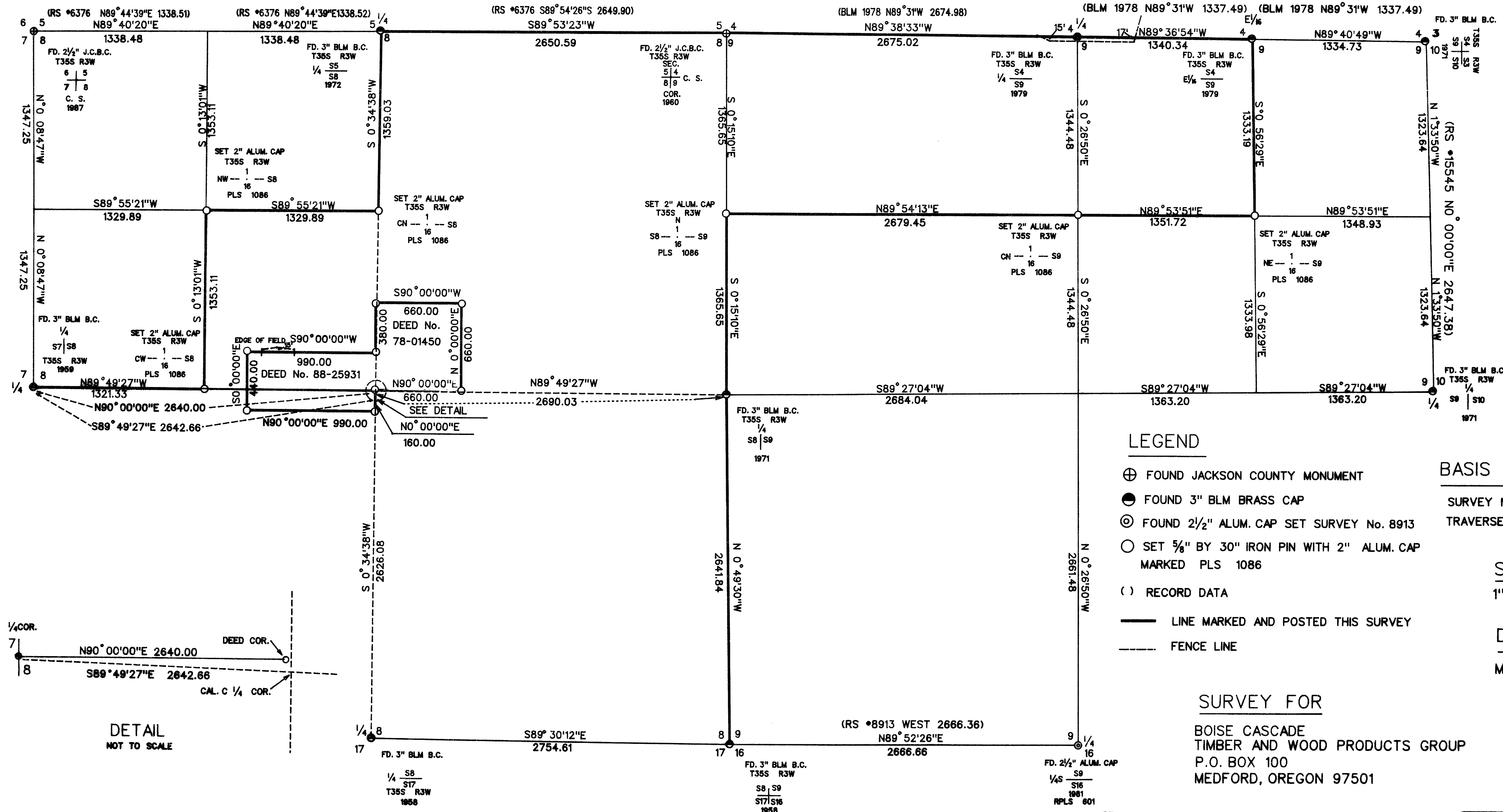


MAP OF SURVEY LOCATED IN SEC. 8 AND THE NORTH HALF OF SEC. 9 TOWNSHIP 35 SOUTH RANGE 3 WEST WILLAMETTE MERIDIAN



LEGEND

- ⊕ FOUND JACKSON COUNTY MONUMENT
- FOUND 3" BLM BRASS CAP
- ⊙ FOUND 2 1/2" ALUM. CAP SET SURVEY No. 8913
- SET 5/8" BY 30" IRON PIN WITH 2" ALUM. CAP MARKED PLS 1086
- () RECORD DATA
- LINE MARKED AND POSTED THIS SURVEY
- - - FENCE LINE

BASIS OF BEARING

SURVEY NUMBER 15625
TRAVERSE POINTS

SCALE
1" = 600'

DATE
MAY 12, 1998

SURVEY FOR

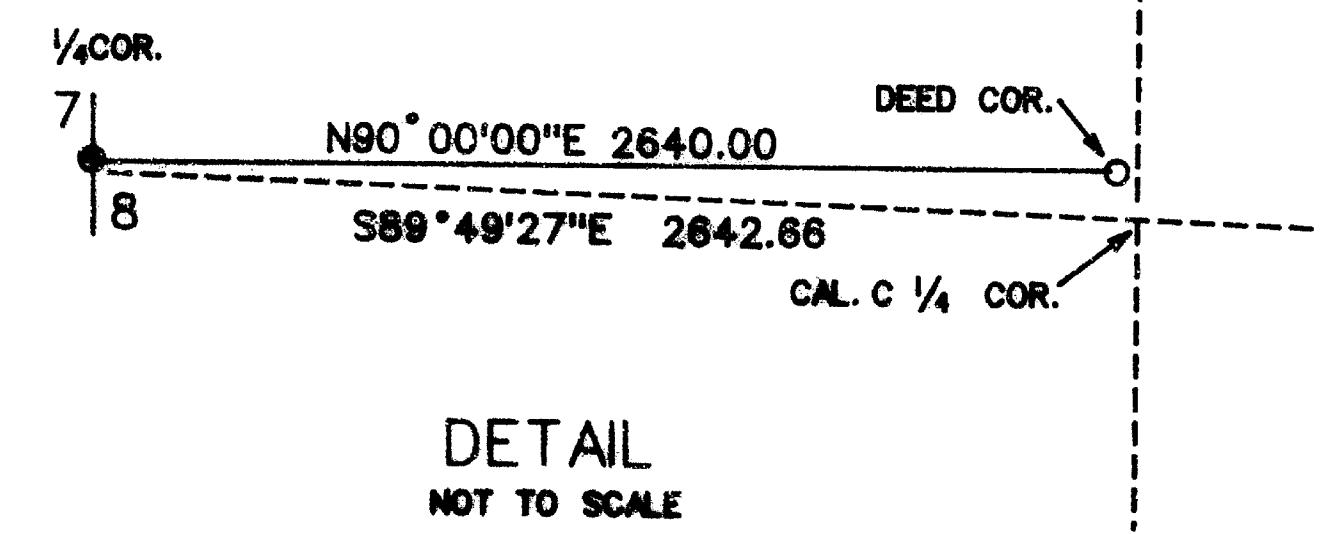
BOISE CASCADE
TIMBER AND WOOD PRODUCTS GROUP
P.O. BOX 100
MEDFORD, OREGON 97501

SURVEY BY

RAMBO SURVEYING
ARTHUR R. RAMBO
735 VISTA PARK DRIVE
EAGLE POINT, OREGON 97524

RECEIVED
Date 5-21-98 By
This survey consists of:
1 sheet of Map
4 sheets Narrative
JACKSON COUNTY
SURVEYOR

REGISTERED
PROFESSIONAL
LAND SURVEYOR
Arthur R. Rambo
OREGON
JULY 30, 1976
ARTHUR R. RAMBO
NO 1086
EXPIRES DECEMBER 31, 1998



TAX LOT No. 35-3W-B (3900, 4100, & 4200)

15746

FROM WHICH:

A 9 1/2 INCH DIAMETER FIR BEARS N33°39'W, 22.8 FEET MARKED CN1/16S9 IN UPPER FACE, BT IN LOWER FACE.

A 10 INCH DIAMETER FIR BEARS N00°13'E, 30.0 FEET MARKED CN1/16S9 IN UPPER FACE, BT IN LOWER FACE.

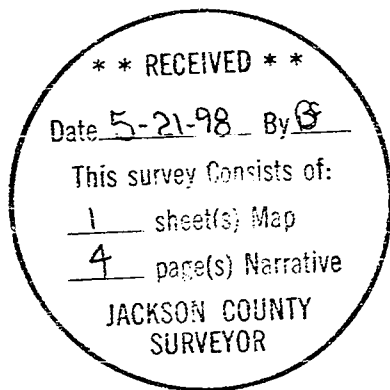
NORTH EAST ONE-SIXTEENTH CORNER SECTION 9 TOWNSHIP 35 SOUTH RANGE 3 WEST. AT THE CORNER POINT I SET A 5/8" BY 30" IRON PIN WITH A 2" DIAMETER ALUM. CAP MARKED:

T35S R3W
1
NE--- ---S9
16
PLS 1086

FROM WHICH:

AN 8 INCH DIAMETER MADRONA BEARS N12°46'W, 11.9 FEET MARKED NE1/16S9 IN UPPER FACE, BT IN LOWER FACE.

A 12 1/2 INCH DIAMETER MADRONA BEARS S33°49'W, 18.8 FEET MARKED NE1/16S9 IN UPPER FACE, BT IN LOWER FACE.



REGISTRATION EXPIRES DECEMBER 31, 1998

TAX LOT 35-3W-B (3900,4100,&4200)

NORTHWEST ONE-SIXTEENTH CORNER SECTION 8 TOWNSHIP 35 SOUTH
RANGE 3 WEST. AT THE CORNER POINT I SET A 5/8" BY 30" IRON
PIN WITH A 2" DIAMETER ALUM. CAP MARKED:

T35S R3W
1
NW--- ---S8
16
PLS 1086

FROM WHICH:

A 6 INCH DIAMETER OAK BEARS $S85^{\circ} 14'E$, 46.3 FEET
MARKED NW1/16S8 IN UPPER FACE, BT IN LOWER FACE.

AN 8 INCH DIAMETER OAK BEARS $S76^{\circ} 17'W$, 24.6
FEET MARKED NW1/16S8 IN UPPER FACE, BT IN LOWER
FACE.

CENTER WEST ONE-SIXTEENTH CORNER SECTION 8 TOWNSHIP 35 SOUTH
RANGE 3 WEST. AT THE CORNER POINT I SET A 5/8" BY 30" IRON
PIN WITH A 2" DIAMETER ALUM. CAP MARKED:

T35S R3W
1
CW--- ---S8
16
PLS 1086

FROM WHICH:

A 6 INCH DIAMETER OAK BEARS $N67^{\circ} 23'W$, 41.1 FEET
MARKED CW1/16S8 IN UPPER FACE, BT IN LOWER FACE.

A 12 INCH DIAMETER MADRONA BEARS $S67^{\circ} 21'W$, 41.7
FEET MARKED CW1/16S8 IN UPPER FACE, BT IN LOWER
FACE.

NORTH ONE-SIXTEENTH CORNER COMMON TO SECTION 8 AND SECTION 9
TOWNSHIP 35 SOUTH RANGE 3 WEST. AT THE CORNER POINT I SET A
5/8" BY 30" IRON PIN WITH A 2" DIAMETER ALUM. CAP MARKED:

T35S R3W
N
1
S8--- ---S9
16
PLS 1086

FROM WHICH:

A 7 INCH DIAMETER FIR BEARS $S26^{\circ} 09'E$, 16.9 FEET
MARKED N1/16S9 IN UPPER FACE, BT IN LOWER FACE.

A 4 1/2 INCH DIAMETER OAK BEARS $S22^{\circ} 00'W$, 22.2
FEET MARKED N1/16S8 IN UPPER FACE, BT IN LOWER
FACE.

CENTER NORTH ONE-SIXTEENTH CORNER SECTION 9 TOWNSHIP 35 SOUTH
RANGE 3 WEST. AT THE CORNER POINT I SET A 5/8" BY 30" IRON
PIN WITH A 2" DIAMETER ALUM. CAP MARKED:

T35S R3W
1
CN--- ---S9
16
PLS 1086

FROM WHICH:

I MARK NEW TREES.

A 7 INCH DIAMETER CEDAR BEARS N66°51'W,
27.8 FEET MARKED 1/4S8 IN UPPER FACE, BT
IN LOWER FACE.

A 14 1/2 INCH DIAMETER FIR BEARS
N11°08'E, 21.6 FEET MARKED 1/4S8 IN UPPER
FACE, BT IN LOWER FACE.

AT THE ONE-QUARTER CORNER COMMON TO
SECTION 5 AND SECTION 8 I FOUND A 3"
DIAMETER BLM BRASS CAP.

FROM WHICH:

A 17 1/2 INCH DIAMETER MADRONA BEARS
N53°11'E, 46.8 FEET MARKED 1/4S5 IN UPPER
FACE, BT IN LOWER FACE.

AT THE ONE-QUARTER CORNER COMMON TO
SECTION 4 AND SECTION 9 I FOUND A 3"
DIAMETER BLM BRASS CAP.

FROM WHICH:

AN 11 INCH DIAMETER FIR BEARS S20°49'E,
43.8 FEET MARKED 1/4S9 IN UPPER FACE, BT
IN LOWER FACE.

AT THE SECTION CORNER COMMON TO SECTION
8, 9, 16, AND 17 I FOUND A 3" DIAMETER BLM
BRASS CAP.

FROM WHICH:

A 9 INCH DIAMETER FIR BEARS S35°25'E, 34.9
FEET MARKED S16 IN UPPER FACE, BT IN LOWER
FACE.

A 7 1/2 INCH DIAMETER FIR BEARS N77°06'W,
19.0 FEET MARKED S8 IN UPPER FACE, BT IN
LOWER FACE.

CORNERS SET THIS SURVEY

ALL MEASUREMENTS TO BEARING TREES ARE TO THE CENTER OF
TREE AT BASE UNLESS OTHERWISE STATED. BEARING TREES
HAVE A BRASS WASHER MARKED LS1086 NAILED TO LOWER
FACE.

CENTER NORTH ONE-SIXTEENTH CORNER SECTION 8 TOWNSHIP 35 SOUTH
RANGE 3 WEST. AT THE CORNER POINT I SET A 5/8 BY 30 INCH
IRON PIN WITH A 2 INCH DIAMETER ALUM. CAP MARKED:

T35S R3W
1
CN --- ---S8
16
PLS 1086

FROM WHICH:

A 10 INCH DIAMETER MADRONA BEARS N73°15'W, 10.6
FEET MARKED CN1/16S8 IN UPPER FACE, BT IN LOWER
FACE.

AN 8 INCH DIAMETER MADRONA BEARS N06°05'E, 27.7
FEET MARKED CN1/16S8 IN UPPER FACE, BT IN LOWER
FACE.

SURVEY NARRATIVE TO COMPLY WITH O.R.S. 209.250

LOCATION: SECTION 8 AND THE NORTH HALF OF SECTION 9,
TOWNSHIP 35 SOUTH, RANGE 3 WEST,
WILLAMETTE MERIDIAN, JACKSON COUNTY,
OREGON.

SURVEY FOR: BOISE CASCADE
TIMBER AND WOOD PRODUCTS GROUP
P.O. BOX 100
MEDFORD, OREGON 97501

SURVEY BY: RAMBO SURVEYING
ARTHUR R. RAMBO LS1086
735 VISTA PARK DRIVE
EAGLE POINT, OREGON 97524

DATE: MAY 12, 1998

BASIS OF BEARING: SURVEY NUMBER 15625 (TRAVERSE POINTS)

PURPOSE: TO MARK AND POST BOISE CASCADE BOUNDARY
LINES AND SET PROPERTY CORNERS AROUND THAT
PROPERTY DESCRIBED IN JACKSON COUNTY DEED
RECORDS (DEED NUMBER 78-01450 AND
DEED NUMBER 88-25931). TO MARK AND
POST CERTAIN BOUNDARY LINES AND SET
CORNERS PER THE DIRECTION OF BOISE
CASCADE CORPORATION AS SHOWN ON THE PLAT
TO ACCOMPANY THIS NARRATIVE.

PROCEDURE: A SEARCH OF RECORDS REVEALED THAT THE
EXTERIOR CORNERS OF SAID SECTION 8 AND
SECTION 9 NEEDED FOR CONTROL OF THIS
SURVEY WERE REESTABLISHED FROM ORIGINAL
EVIDENCE OR PROPORTIONATE MEASUREMENT.

I RAN A TRAVERSE TYING TO THE CORNERS
NEEDED FOR CONTROL OF THIS SURVEY. THEN
CLOSED TRAVERSES WERE RAN TYING TO
THE CONTROL SURVEY OF THIS PROJECT.

THE SUBDIVISION OF SAID SECTION 8 AND
SECTION 9 WAS THEN COMPUTED. THEN LINES
NEEDED WERE RAN, CORNERS WERE SET, AND THE
LINES WERE MARKED AND POSTED.

NEW TREES MARKED AT EXISTING CORNERS

ALL TREES ARE MEASURED TO THE CENTER OF
THE TREE AT THE BASE UNLESS OTHER WISE
STATED. ALL TREES HAVE A BRASS WASHER
MARKED PLS 1086 NAILED TO THE LOWER FACE.

AT THE ONE-QUARTER CORNER COMMON TO
SECTION 8 AND SECTION 17 I FOUND A 3"
DIAMETER BLM BRASS CAP.