

# MAP OF SURVEY

FOR

R. M. ELROD

IN SECTION 5, T. 39S. R. 1W., WM., JACKSON CO. ORE.

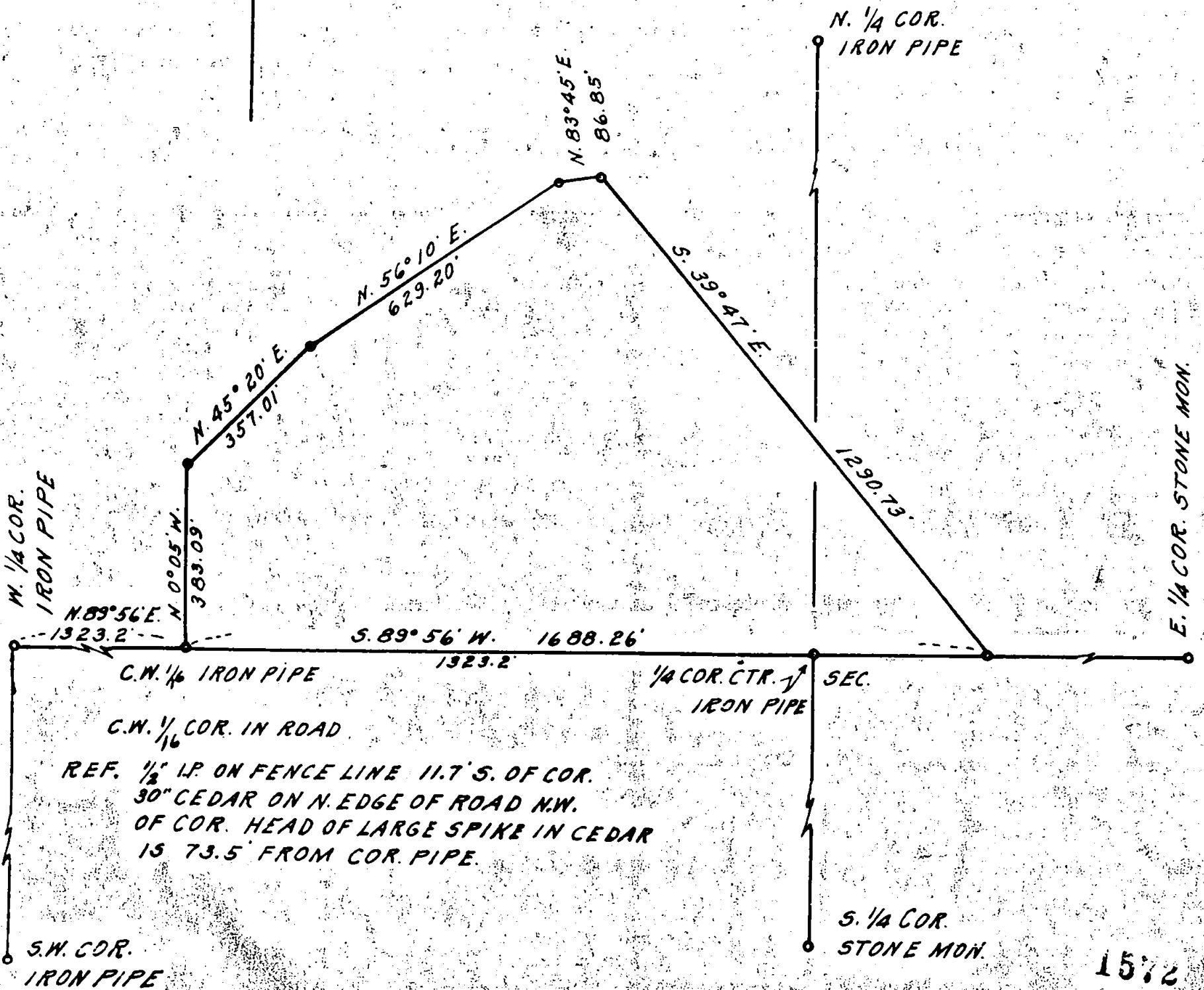
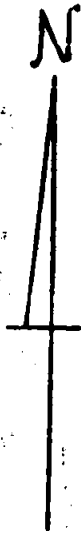
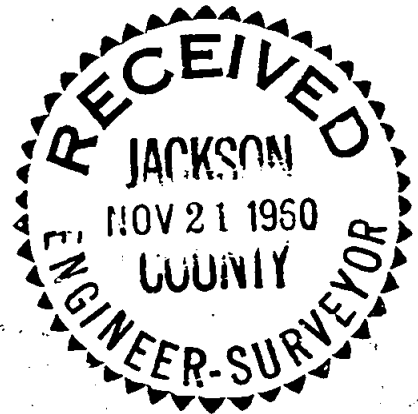
SOLAR DATUM

DATE: 11-8-60

SCALE: 1" = 300'

REGISTERED  
OREGON  
LAND SURVEYOR

MARCH 10, 1944  
L. E. AGER  
21



Survey narrative to comply with Section 87-330, Oregon State Law of 1947

For: R. M. Elrod

Purpose: to establish the corners of tract shown on accompanying map.

Procedure: Set the C  $1/4$  corner at the intersection of the true lines from the West and East Quarter corners and the North and South  $1/4$  corners and set the CW $1/16$  corner at a point midway between the N.  $1/4$  cor. and the C  $1/4$  corner and surveyed the boundaries of the property as shown on accompanying map.  
All corners shown on map are bounded by original witness trees except the north  $1/4$  corner which was prorated in from a traverse from the Northeast corner to the Northwest corner. Stones shown are scribed  $1/4$ .  
I did not subdivide the NW $1/4$  or the NE $1/4$  of the Section.

REGISTERED  
OREGON  
LAND SURVEYOR

*L. E. Ager*  
MARCH 10, 1944  
L. E. AGER  
21

