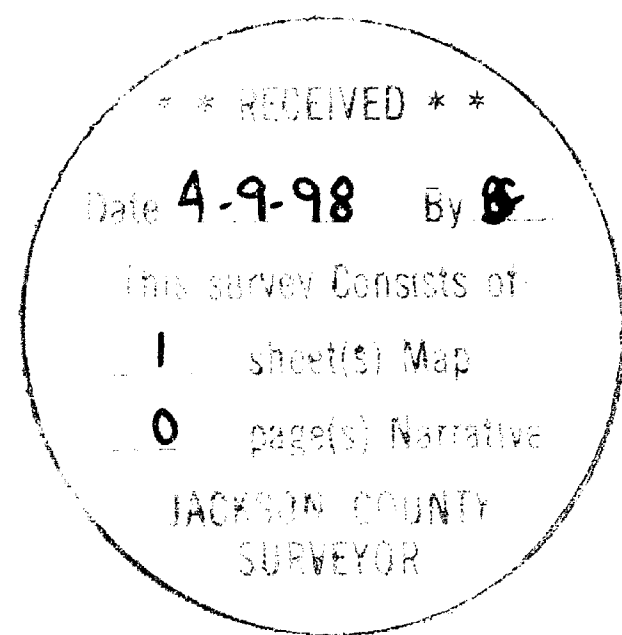


LONE ROCK TIMBER CO.

PO BOX 1127 ROSEBURG OREGON 97478 DATE: APRIL 1998
 SECTION 10, TOWNSHIP 34 SOUTH, RANGE 3 EAST, W.M. JACKSON COUNTY, OREGON
 LONE ROCK TIMBER TRACT: M - 34 - 3E - 10 SCALE 1" = 600'

NARRATIVE

THIS SURVEY WAS CONDUCTED TO ESTABLISH PROPERTY CORNERS AND PROPERTY LINES FOR TIMBER CUTTING PURPOSES. WE INITIATED THIS SURVEY AT THE WEST 1/4 OF SECTION 10 A BLM BCIP SET FROM ORIGINAL EVIDENCE. WE BEGAN A RANDOM TRAVERSE LINE SOUTHERLY TO A POINT NEAR THE SOUTHWEST CORNER WHICH IS A BLM BCIP SET FROM ORIGINAL EVIDENCE. THE CORNER NOW IN A POND 6 FEET DEEP. WE TIED IN THE BEARING TREES AND CALCULATED THE LOCATION OF THIS CORNER FROM THE INTERSECTION OF RECORD DISTANCES. WE THEN CONTINUED OUR SURVEY EASTERLY AND THEN NORTHERLY TO TIE IN THE SOUTH 1/4, SOUTHEAST CORNER, EAST 1/4 AND NORTH 1/4 OF SECTION 10, ALL BLM BCIP SET FROM ORIGINAL EVIDENCE. WE CLOSED OUR TRAVERSE BACK FROM THE NORTH 1/4 TO THE WEST 1/4 WITH GPS. BASED ON OUR CALCULATIONS WE SET THE WEST 1/16 CORNER AND TRAVERSED AROUND THE SE 1/4 SW 1/4 OF SECTION 10 TO SET THE SW 1/16 AND CENTER-SOUTH 1/16 AND MARK PROPERTY LINES AS SHOWN HEREON. THIS SURVEY WAS DONE WITH A NIKON 450 AND TRIMBLE GPS PROXR DECIMETER GPS WITH GARY ANGIOLET, JERRY RAGON AND IGNACIO ROMAN ASSISTING ME.

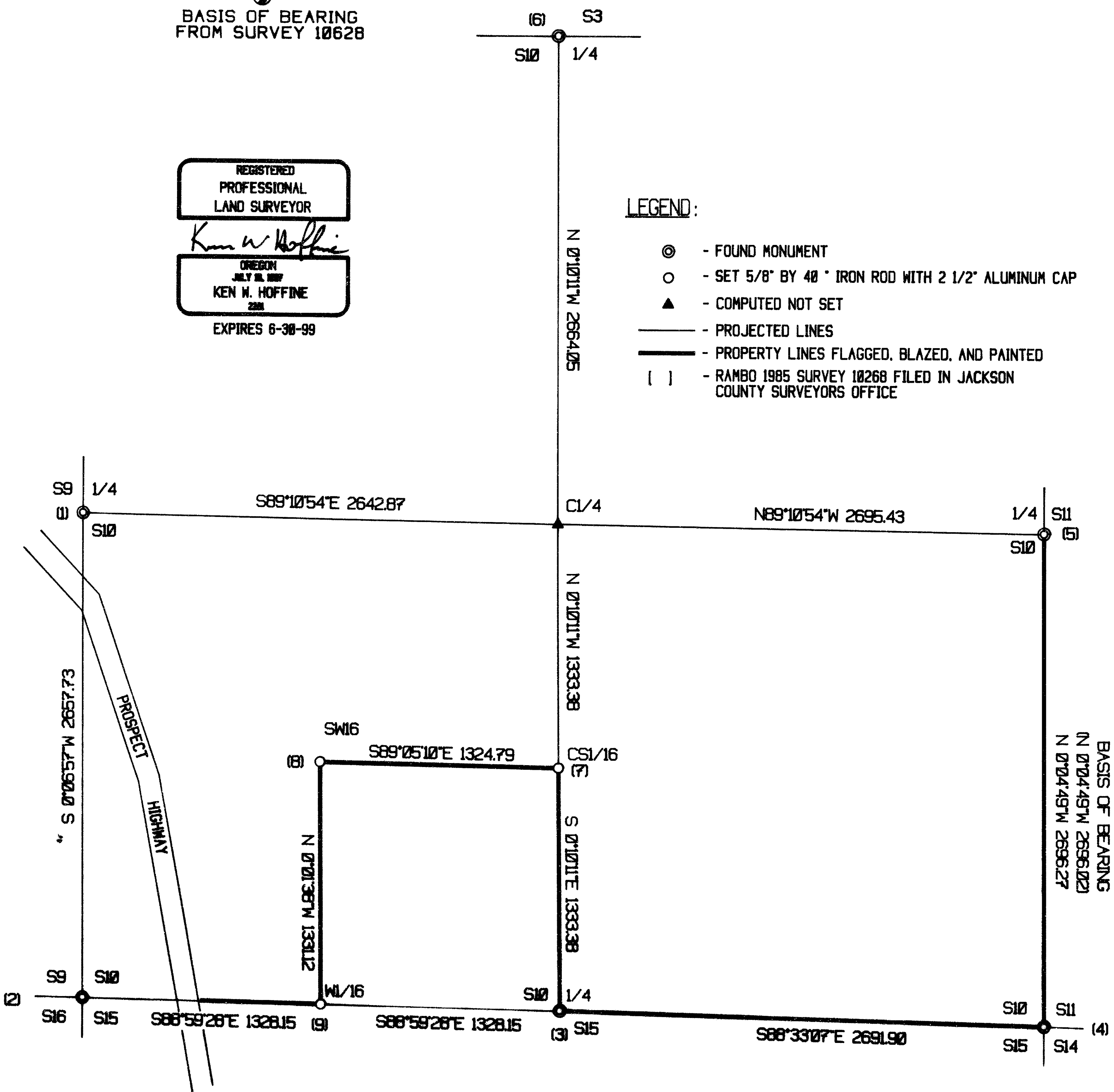


BASIS OF BEARING FROM SURVEY 10628

REGISTERED PROFESSIONAL LAND SURVEYOR
Ken W. Hoffine
 OREGON JULY 18, 1987
 KEN W. HOFFINE
 2281
 EXPIRES 6-30-99

LEGEND:

- ⊙ - FOUND MONUMENT
- - SET 5/8" BY 40" IRON ROD WITH 2 1/2" ALUMINUM CAP
- ▲ - COMPUTED NOT SET
- - PROJECTED LINES
- - PROPERTY LINES FLAGGED, BLAZED, AND PAINTED
- [] - RAMBO 1985 SURVEY 10268 FILED IN JACKSON COUNTY SURVEYORS OFFICE



CORNER INFORMATION

THE FOLLOWING IS A RECORD OF ALL CORNERS FOUND OR SET DURING THE COURSE OF THIS SURVEY.

- 1) WEST 1/4 OF SECTION 10
 FOUND: 2" 1964 BRASS CAP WITH STONE ALONG SIDE.
 -- 11" DOUGLAS FIR BEARS N21 1/4"E, 62.5 FEET (NO RECORD B.T. TAG SAYS N20"E, 62.8 FEET)
 -- 30" WHITE FIR BEARS S20"W, 22.5 FEET (RECORD S20"W, 22.44 FEET) WELL HEALED FACE AND B.T. TAG
 -- 30" CEDAR STUMP BEARS S81 3/4"W, 18.2 FEET (RECORD S82"W, 17.82 FEET) WELL HEALED FACE AND B.T. TAG
 CORNER LIES 2 FEET EAST OF TOP OF WEST EDGE OF THRU CUT FOR OLD RAILROAD GRADE.
- 2) SOUTHWEST SECTION CORNER OF SECTION 10
 CORNER IS NOW UNDER WATER IN POND. LAND OWNER SAYS DUCK DECOY IS TIED TO CORNER.
 -- 36" DOUGLAS FIR STUMP BEARS S57 1/2"W, 100.00 FEET (RECORD S58"W, 104.94 FEET)
 -- 30" CEDAR BEARS N42 3/4"W, 214.50 FEET (RECORD N41"W, 214.50 FEET) WELL HEALED FACE AND B.T. TAG
 -- 35" CEDAR BEARS S43 1/2"W, 145.86 FEET (RECORD S46"W, 145.86 FEET) WELL HEALED FACE
 CORNER POSITION WAS DETERMINED BY A DISTANCE INTERSECT FROM THE TWO CEDAR BEARING TREES.
- 3) SOUTH 1/4 CORNER OF SECTION 10
 FOUND: 1964 BLM BRASS CAP WITH STONE ALONG SIDE.
 -- 32" PINE STUMP BEARS S75 3/4"W, 9.9 FEET, NO RECORD OLD B.T. TAG UNREADABLE
 -- 21" WHITE FIR BEARS N17 1/2"W, 21.8 FEET (RECORD N17"W, 21.12 FEET) WELL HEALED FACE NO TAG
 -- 15" DOUGLAS FIR BEARS S10 3/4"W, 20.6 FEET (RECORD S11"W, 20.46 FEET) WELL HEALED FACE, NO TAG
 CORNER LIES AT WEST EDGE OF LARGE BENCH.
- 4) SOUTHEAST SECTION CORNER OF SECTION 10
 FOUND: 1964 BLM BRASS CAP WITH STONE ALONG SIDE.
 -- 13" DOUGLAS FIR BEARS S60"W, 26.7 FEET (RECORD S61"W, 26.73 FEET) WELL HEALED FACE, NO TAG
 -- 53" CEDAR STUMP BEARS S27 1/4"W, 7.2 FEET (RECORD S28"W, 5.28 FEET) OLD UNREADABLE TAG
 -- 11" DOUGLAS FIR BEARS N67 3/4"W, 2.9 FEET (NO RECORD B.T. TAG READS N88"W, 5.41 FEET) B.T. TAG, NO FACE
 -- 25" WHITE FIR BEARS N26"E, 7.1 FEET (RECORD N26"E, 6.6 FEET) WELL HEALED FACE AND B.T. TAG
 -- 31" PONDEROSA PINE BEARS N19 3/4"E, 59.6 FEET (RECORD N22"E, 59.4 FEET)
 CORNER LIES ON FLAT GROUND APPROXIMATELY 600 FEET EAST OF LODGEPOLE ROAD NEAR 1 MILE MARKER.
- 5) EAST 1/4 CORNER OF SECTION 10
 FOUND: 1964 BLM BRASS CAP IN MOUND OF STONES.
 -- 11" WHITE FIR BEARS S40 1/2"E, 13.3 FEET (RECORD S39"E, 1.32 FEET) WELL HEALED FACE AND B.T. TAG
 -- 17" WHITE FIR BEARS N6 1/2"W, 18.7 FEET (RECORD N6"W, 18.48 FEET) WELL HEALED FACE AND B.T. TAG
 -- ROTTEN PINE STUMP BEARS N63 1/4"W, 31.0 FEET (RECORD N63"W, 30.36 FEET) VISIBLE SCRIBING AND B.T. TAG
 CORNER LIES IN MOUND OF STONES.
- 6) NORTH 1/4 CORNER OF SECTION 10
 FOUND: 1964 BLM BRASS CAP WITH STONE ALONG SIDE.
 -- 22" WHITE FIR BEARS N14 1/2"E, 53.7 FEET (RECORD N15"E, 53.46 FEET) WELL HEALED FACE AND B.T. TAG
 -- 24" WHITE FIR BEARS S6 1/2"W, 90.6 FEET (RECORD S6"W, 89.76 FEET) WELL HEALED FACE AND B.T. TAG
 -- 14" DOUGLAS FIR 4 FOOT TALL STUMP WITH LOCATION TAG BEARS S78 1/4"W, 4.6 FEET
 CORNER LIES ON SOUTH FACING SLOPE APPROXIMATELY N37"W, 375.0 FEET FROM LANDING AT END OF ROAD.
- 7) CENTER SOUTH 1/16 CORNER OF SECTION 10
 SET 5/8" X 40" IRON ROD WITH 2 1/2" ALUMINUM CAP MARKED LONE ROCK TIMBER CS 1/16 S10 1998 PLS 2291 0.2 FEET ABOVE GROUND.
 -- 13" DOUGLAS FIR BEARS S74 3/4"E, 22.6 FEET, WE SCRIBE CS 1/16 S10 B.T. AND TAG TREE
 -- 17" DOUGLAS FIR BEARS N14 1/2"W, 27.3 FEET, WE SCRIBE CS 1/16 S10 B.T. AND TAG TREE
 CORNER LIES ON FLAT GROUND, OLD CAT ROAD IS APPROXIMATELY 25 FEET SOUTH OF CORNER.
- 8) SOUTHWEST 1/16 CORNER OF SECTION 10
 SET 5/8" X 40" IRON ROD WITH 2 1/2" ALUMINUM CAP MARKED LONE ROCK TIMBER SW 1/16 S10 1998 PLS 2291 0.3 FT. ABOVE GROUND.
 -- 13" DOUGLAS FIR BEARS N74"E, 27.0 FEET, WE SCRIBE SW 1/16 S10 B.T. AND TAG TREE
 -- 18" DOUGLAS FIR BEARS S56"E, 29.4 FEET, WE SCRIBE SW 1/16 S10 B.T. AND TAG TREE
 CORNER LIES ON 25% WESTERLY SLOPE.
- 9) WEST 1/16 CORNER OF SECTION 10
 SET 5/8" X 40" IRON ROD WITH 2 1/2" ALUMINUM CAP MARKED LONE ROCK TIMBER W1/16 S10 S15 1998 PLS 2291 0.2 FT. ABOVE GROUND.
 -- 11" WHITE FIR BEARS N56 3/4"E, 23.8 FEET, WE SCRIBE W1/16 S10 B.T. AND TAG TREE
 -- 10" WHITE FIR BEARS S0 1/2"W, 19.6 FEET, WE SCRIBE W1/16 S10 B.T. AND TAG TREE
 CORNER LIES ON FLAT GROUND NEAR FOOT OF MODERATE WEST FACING SLOPE