

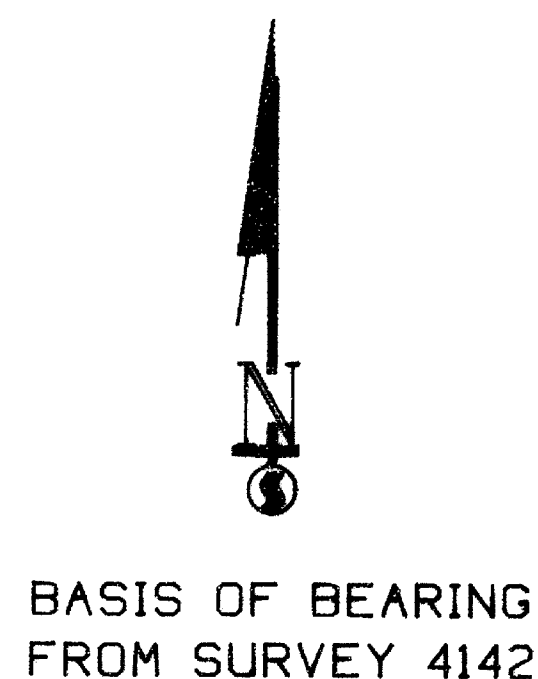
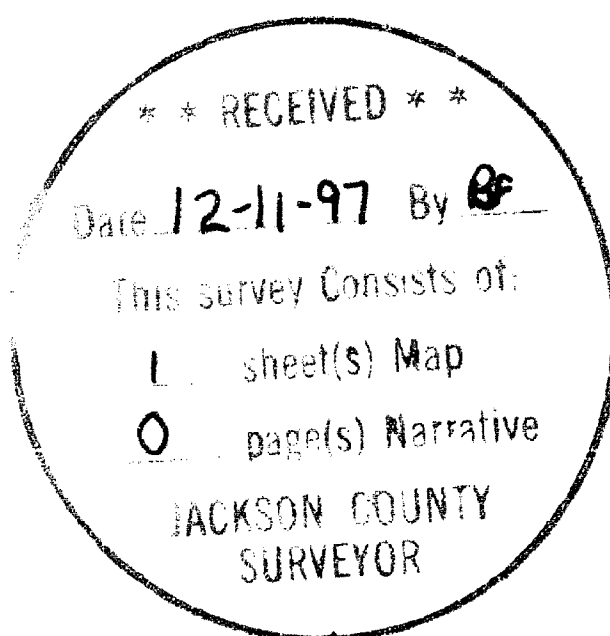
LONE ROCK TIMBER CO.

PO BOX 1127 ROSEBURG OREGON 97470
 SECTION 24, TOWNSHIP 33 SOUTH, RANGE 02 EAST, W.M.
 LONE ROCK TIMBER TRACT - M-33-2E-24

DATE: NOV. 1997
 JACKSON COUNTY, OREGON
 SCALE 1" = 500'

NARRATIVE :

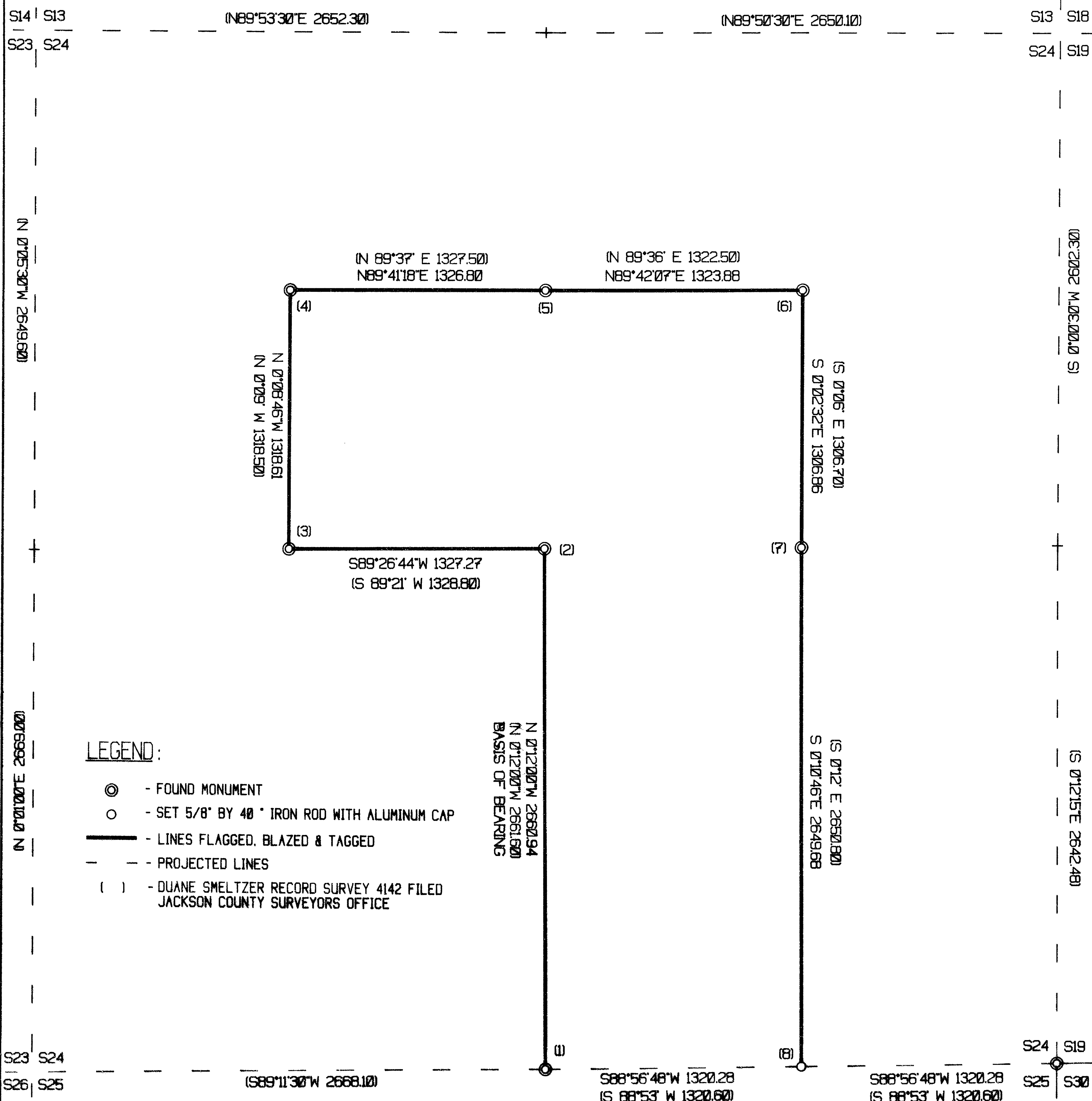
THIS SURVEY WAS CONDUCTED TO SET PROPERTY CORNERS AND MARK PROPERTY LINES FOR TIMBER CUTTING PURPOSES. WE INITIATED THIS SURVEY AT THE SOUTH 1/4 OF SECTION 24, A BLM BRASS CAP SET FROM ORIGINAL EVIDENCE. WE BEGAN A RANDOM CLOSED LOOP TRAVERSE TO THE INTERIOR CORNERS (2)-(7) AS SHOWN HEREON AND SET BY DON SMELTZER IN 1969. THE IRON ROD SET FOR THE EAST 1/16 CORNER TO SECTION 24 AND 25 WAS FOUND OUT OF POSITION DUE TO LOGGING ACTIVITY. SINCE THE EAST 1/16 HAD ONLY ONE BEARING TREE MARKED BY SMELTZER AND DISCREPANCY OF BEARINGS MARKED ON THE TREE. WE DECIDED TO TIE THE SOUTHWEST CORNER OF SECTION 24 A BLM BCIP SET FROM ORIGINAL EVIDENCE (9) WITH A CLOSED TRAVERSE TO RESET THE EAST 1/16. PROPERTY LINES WERE FLAGGED, BLAZED, PAINTED AND TAGGED AS SHOWN HEREON. THIS SURVEY WAS DONE WITH A NIKON DTM 450 WITH GARY ANGIOLET, JERRY RAGON AND IGNACIO ROMAN ASSISTING ME.



REGISTERED PROFESSIONAL LAND SURVEYOR

Ken W Hoffine
 OREGON JULY 16, 1967
 KEN W. HOFFINE
 2291

EXPIRES 6-30-99



CORNER INFORMATION :

THE FOLLOWING IS A RECORD OF ALL CORNERS FOUND OR SET DURING THE COURSE OF THIS SURVEY

- SOUTH 1/4 CORNER OF SECTION 24
 FOUND 1965 BLM BRASS CAP 0.5 FEET ABOVE GROUND.
 -- 14" WHITE FIR BEARS N6 1/2"E, 91.6 FEET (RECORD N7"E, 91.74) WELL HEALED FACE AND BLM TAG
 -- 26" WHITE FIR BEARS S71"W, 9.9 FEET (RECORD S71"W, 9.24 FEET) CHOPPED OUT FACE AND BLM TAG
 -- 26" FIR BEARS S15 1/2"E, 10.0 FEET (RECORD S19 1/4"E, 9.9 FEET) BLM TAG AND WELL HEALED FACE
 CORNER LIES APPROXIMATELY 150 FEET SOUTH OF ROAD. LOCATION TAG ON SOUTH SIDE OF ROAD.
- CENTER 1/4 CORNER OF SECTION 24
 FOUND 1 1/2" ALUMINUM CAP FROM SMELTZER'S SURVEY 4142.
 -- 19" DOUGLAS FIR BEARS S67"W, 33.2 FEET (RECORD S74"W, 33.6 FEET) B.T. TAG AND WELL HEALED FACE
 -- 18" DOUGLAS FIR BEARS N22 3/4"E, 18.6 FEET (B.T. TAG READS N27"E, 20.0 FEET) B.T. TAG AND WELL HEALED FACE
 CORNER IS LOCATED ON 30% NORTHERLY SLOPE.
- CENTERWEST 1/16 CORNER OF SECTION 24
 FOUND 1 1/2" ALUMINUM CAP FROM SMELTZER'S SURVEY 4142.
 -- 17" DOUGLAS FIR BEARS N2"W, 8.4 FEET (RECORD N5"W, 7.9 FEET) MEDCO TAG AND WELL HEALED FACE
 -- 9" WHITE FIR BEARS S66"E, 17.7 FEET (RECORD S66"E, 17.8 FEET) MEDCO TAG AND VISIBLE SCRIBING
 CORNER IS APPROXIMATELY 100 FEET WEST OF DIRT ROAD.
- NORTHWEST CORNER OF SECTION 24
 FOUND 1 1/2" ALUMINUM CAP FROM SMELTZER'S SURVEY 4142.
 -- 10" WHITE FIR BEARS N15"E, 5.8 FEET (RECORD N10"E, 5.8 FEET) LOCATION TAG AND WELL HEALED FACE
 -- 12" WHITE FIR BEARS S17 3/4"E, 22.3 FEET (RECORD S23"E, 22.6 FEET) BEARING TREE TAG AND WELL HEALED FACE
 CORNER LIES ON FLAT BENCH.
- CENTER NORTH 1/16 CORNER OF SECTION 24
 FOUND 1 1/2" ALUMINUM CAP FROM SMELTZER'S SURVEY 4142.
 -- 14" WHITE FIR BEARS N38 1/4"W, 12.6 FEET (RECORD N42"W, 12.8 FEET) TORN MEDCO TAG AND WELL HEALED FACE
 -- 20" WHITE FIR BEARS S31 1/2"E, 33.9 FEET (RECORD S30"E, 35.1 FEET) NO TAG AND WELL HEALED FACE
 CORNER LIES ON WEST SLOPE APPROXIMATELY 200 FEET EAST OF DRAW.
- NORTHEAST 1/16 CORNER OF SECTION 24
 FOUND 1/2" ALUMINUM CAP FROM SMELTZER'S SURVEY 4142.
 -- 13" WHITE FIR BEARS N12"E, 12.3 FEET (RECORD N6"E, 12.2 FEET) NO TAG, WELL HEALED FACE
 -- 16" HEMLOCK BEARS S6 1/2"E, 45.7, WE SCRIBE NE1/16 S24 B.T. AND TAG TREE
 CORNER LIES ON NORTH SLOPE AT WEST EDGE OF CUTTING AREA.
- CENTER EAST 1/16 CORNER OF SECTION 24
 FOUND 1 1/2" ALUMINUM CAP FROM SMELTZER'S SURVEY 4142.
 -- 17" WHITE FIR BEARS N62 3/4"W, 20.8 FEET (RECORD N60"W, 21.0 FEET) B.T. TAG AND WELL HEALED FACE
 -- 6" WHITE FIR BEARS S88 1/4"W, 17.4 FEET (RECORD WEST 17.6 FEET) NO TAG AND WELL HEALED FACE
 CORNER LIES ON FLAT GROUND, GROUND TO NORTH SLOPES NORTH.
- EAST 1/16 CORNER BETWEEN SECTION 24 AND 25
 SET 5/8" X 40" IRON ROD WITH 2 1/2" ALUM. CAP MARKED LONE ROCK TIMBER E1/16 S24/S25 1997 PLS 2291.
 FOUND IRON ROD SET BY SMELTZER UPROOTED AND OUT OF PLACE.
 -- 17" WHITE FIR BEARS S67 3/4"W, 38.75 FEET (RECORD S66"W, 39.0 FEET) WELL HEALED FACE
 -- 11" PINE N17 3/4"W, 18.5 FEET, WE SCRIBE E1/16 S24 B.T. AND TAG TREE
 -- 7" DOUGLAS FIR BEARS S47 1/4"E, 4.1 FEET, WE SCRIBE E1/16 S25 B.T. AND TAG TREE
 CORNER LIES ON 35% EAST FACING SLOPE APPROXIMATELY 400 FEET WEST OF DIRT ROAD.
- SOUTHEAST SECTION CORNER OF SECTION 24
 FOUND 1965 BLM BRASS CAP.
 -- 38" WHITE FIR SNAG BEARS N45"W, 6.3 FEET (RECORD N41"W, 5.94 FEET) CHOPPED OUT FACE
 -- 20" WHITE FIR SNAG 10 FEET TALL BEARS S23 1/4"W, 11.9 FEET (RECORD S24"W, 11.88 FEET) OPEN FACE
 -- 17" WHITE FIR BEARS S74 1/2"E, 23.3 FEET (RECORD S72"E, 23.1 FEET) WELL HEALED FACE AND BLM TAG
 -- 24" WHITE FIR BEARS N48"E, 30.4 FEET (RECORD N49"E, 30.36 FEET) WELL HEALED FACE AND BLM TAG
 -- FOUND DOWN DOGWOOD AS PER BLM NOTES
 -- 18" WHITE FIR WITH BROKEN TOP RECORD N14"W, 52.8 FACE
 CORNER LIES AT SOUTHEAST EDGE OF CUTTING UNIT IN GROVE OF SNAGS AND BLOWDOWN.