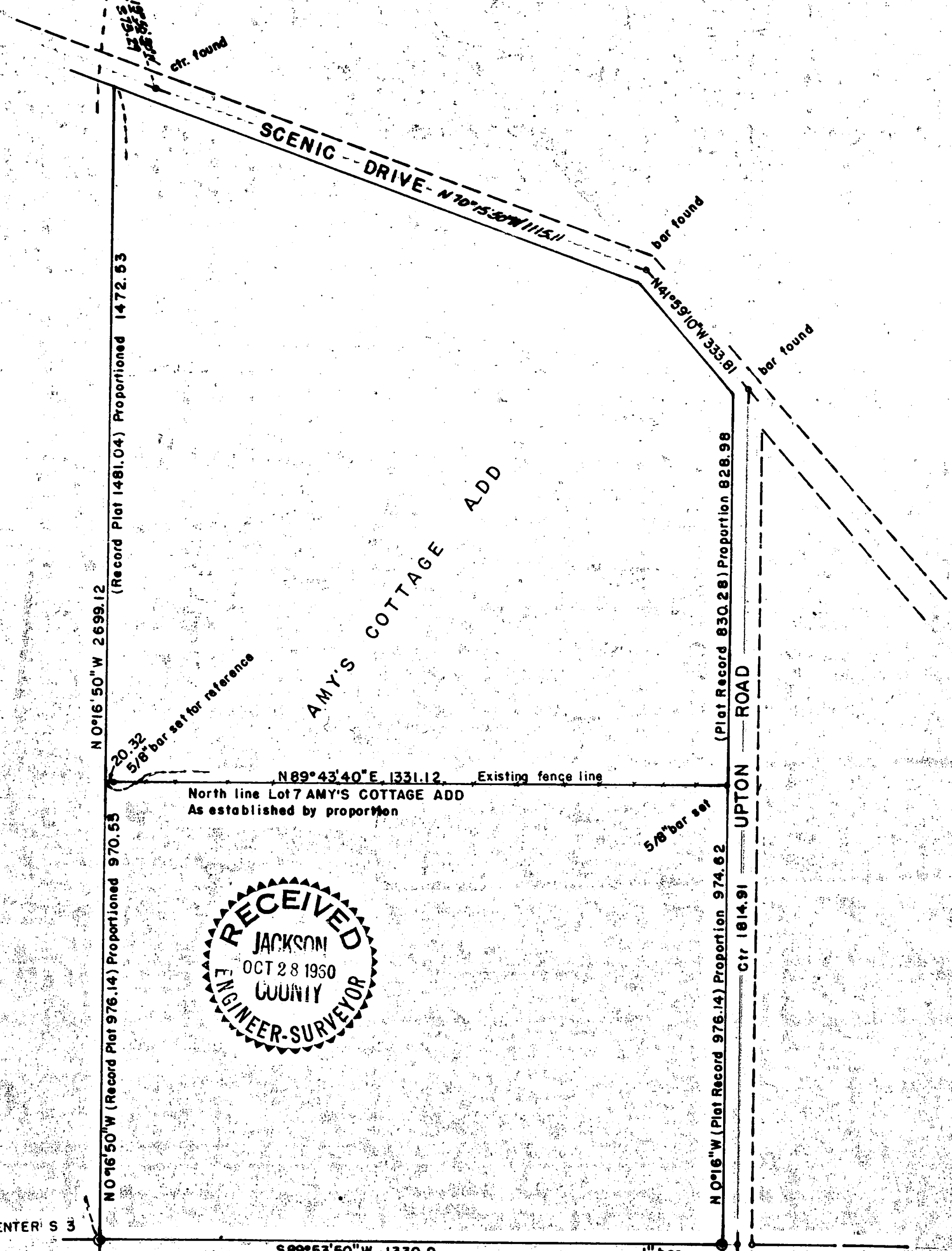


N 1/4 Cor. Stone with cross  
SEC. 3, T. 37 S. R. 2 W.



RECEIVED  
 JACKSON  
 OCT 28 1960  
 COUNTY  
 ENGINEER-SURVEYOR

SURVEY FOR MR. N.A. MEAD, CENTRAL POINT, OREGON.  
 Boundary of Lots 5-6 & 7 AMY'S COTTAGE ADDITION to  
 CENTRAL POINT, OREGON.  
 DATE, OCTOBER 1960 SCALE 1"=200'  
 BEARINGS From OREGON CO-ORDINATE SYSTEM (SOUTH ZONE) Converted to true.

REGISTERED  
 OREGON  
 LAND SURVEYOR  
*L. N. Dow*  
 MAY 6, 1949  
 L. N. DOW  
 251

Written narrative to accompany plat for Survey No.

Survey for Mr. N.A. Mead, Central Point, Oregon.

Date October, 1960.

Purpose: to locate the North line of Amys Cottage Addition or rather the north line of Lot 7, Amys Cottage Addition.

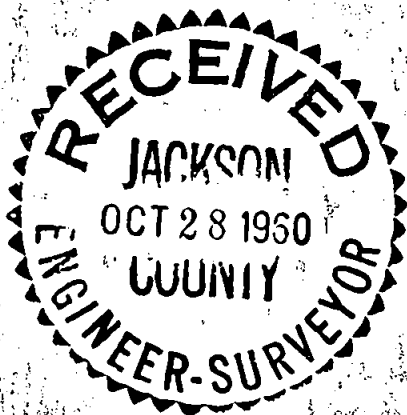
Procedure, An early look at Survey No. 248 on file at the office of the County Surveyor, Jackson County, Oregon, related the the Amys Cottage Addition Plat indicates immediately a very large differences in distances.

A survey was started from a tie made to the point that was located at the center of Section 3 ( this point has since slid into the creek). We then ran N 89°53'50"E 1360.9 feet to the center of Upton Road, thence N 0° 16'W along the center of Upton Road 1814.91 feet to a bar found at the intersection of Scenic Drive, thence ran N 41° 59'10"W 333.81 feet to a bar found, thence ran along the center of Scenic Drive N 70°15' 50"W 1115.11 feet to a road center found, thence ran N 19° 50' 30"W 273.29 feet to a stone with cross at the 1/4 section corner on the north line of Section 3, T.37S. R 2 W.

From the coordinates of his traverse tie we determined the actual distance from corner to corner on the line through the center of Section 3. We also determined the true distance for the frontage on Upton Road.

We then ran from the 1" bar marked Center E 1/16 Cor on the map, N 0° 16'W along the west line of Upton Road a proportioned distance of 974.62 feet to locate the northeast corner, and set a 5/8" bar tight against the north side of the corner post for the east and west fence. We then established a point on proportioned line on the east line of Crown Avenue extended north from Royal Heights Subdivision as a check point. We then ran from the first bar set on the west line of Upton Road S 89°43'40"W 1310.80 feet and set a 5/8" bar on top of the creek bank for a reference corner, this point being 20.32 feet from the true corner.

The existing property line fence is said to have been in this location for near 35 years, the line we have established by this proportioned survey runs down the fence and actually splits many of the fence posts, and could only have been placed in this position by a previous survey made from proportioned distances.



*L. N. Dow*

