

Map of Survey

Property Line Adjustment

Located in a portion of Forest Glen, Phase VII, in the northeast quarter of Section 11, Township 37 South, Range 2 West of the Willamette Meridian, City of Central Point, Jackson County, Oregon.

James C. Governor

P.O. Box 3337
Central Point, Oregon 97502

The Meadows

Vol. 15, Plats, Pg. 60
S/N 10600

ALL LOTS
ADJUSTED BY
INSTRUMENT No.
97-31906
OFFICIAL RECORDS
JACKSON COUNTY
OREGON

Legend:

- Basis of Bearing is NAD-83 True North as established by global positioning satellite observations.
- S/N is survey number on file at the Jackson County Surveyor's Office, Oregon.
- Vol., Pg. are volume and page of the Records of Jackson County as indicated.
- () record per Forest Glen, Phase VI, S/N 14759.
- <> record per Partition Plat No. P-77-1993, S/N 13653.
- indicates Lot line before adjustment.
- found monument as indicated.
- △ found monument per Forest Glen, Phase VI, S/N 14759.
- ∅ found monument per Forest Glen, Phase VII, S/N 15344.
- set 5/8 by 24 inch iron pin monument with yellow plastic cap marked "FARBER PLS 2189".

SURVEY NARRATIVE TO COMPLY WITH O.R.S. 209.250

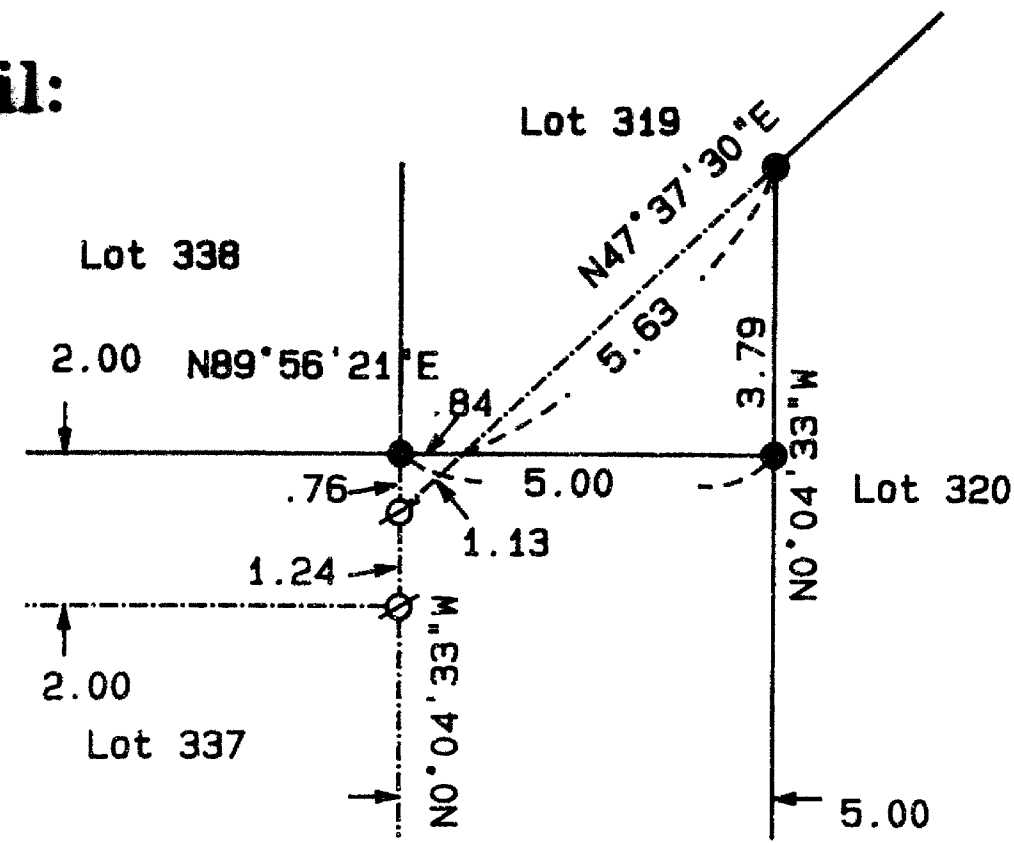
Purpose: To survey and monument the property line adjustments to a portion of the Lots contained in Forest Glen, Phase VII as shown hereon and as approved by the City of Central Point Planning Commission.

Zone Clearance by the City of Central Point

Herbert A. Farber Deputy Planning Director August 7, 1997 Date

Procedure: Utilizing control establish by this office on several other projects in the area, I locate the affected Lots and set the adjusted property corners as shown.

Detail:



fnd. 5/8" iron pin monument per S/N 7820 buried 0.6'

Snowy Mountain View Subdivision, Phase 1
Vol. 22, Plats, Pg. 12
S/N 15386

fnd. 5/8" iron pin monument mkd. "L. J. Frier & Assoc." bears: S12°17'49"W 0.12'

fnd. 5/8" iron pin monument per S/N 14142 Castle Court Condominium Stage I

Portion Forest Glen, Phase VII
Vol. 22, Plats, Pg. 10
S/N 15344

Curve Data:

CURVE	RADIUS	DELTA	LENGTH	BEARING	LONG CHORD & DISTANCE
A	125.00	12°51'40"	28.06	S83°37'49"E	28.00
B	125.00	13°45'04"	30.00	S70°19'29"E	29.93
C	125.00	13°53'58"	30.32	S56°29'57"E	30.25
D	125.00	7°28'52"	16.32	S45°48'29"E	16.31
E	100.00	47°59'33"	83.76	S66°03'53"E	81.34
F	75.00	47°59'33"	62.82	S66°03'53"E	61.00
G	20.00	90°01'02"	31.42	N44°55'53"E	28.29

ADJUSTED AREAS

	Before adjustment	After adjustment
216	4660 sq. ft.	5450 sq. ft.
217	4760 sq. ft.	4620 sq. ft.
218	4554 sq. ft.	4696 sq. ft.
219	5801 sq. ft.	5271 sq. ft.
220	11802 sq. ft.	11739 sq. ft.
307	5032 sq. ft.	4524 sq. ft.
308	3865 sq. ft.	4171 sq. ft.
310	5372 sq. ft.	4868 sq. ft.
311	4992 sq. ft.	4171 sq. ft.
312	3855 sq. ft.	4171 sq. ft.
313	3855 sq. ft.	3792 sq. ft.
314	6893 sq. ft.	8094 sq. ft.
319	4675 sq. ft.	4682 sq. ft.
320	3493 sq. ft.	3287 sq. ft.
321	4727 sq. ft.	4504 sq. ft.
322	5416 sq. ft.	5163 sq. ft.
323	4169 sq. ft.	3915 sq. ft.
324	6508 sq. ft.	5674 sq. ft.
335	3465 sq. ft.	3972 sq. ft.
336	3465 sq. ft.	3630 sq. ft.
337	4200 sq. ft.	3630 sq. ft.
338	3675 sq. ft.	3465 sq. ft.

Portion Parcel No. 1
Partition Plat No. P-77-1993
S/N 13653

**** RECEIVED ****
Date 8-29-97 By *[Signature]*
This survey consists of:
1 sheet(s) Map
0 page(s) Narrative
JACKSON COUNTY SURVEYOR

REGISTERED
PROFESSIONAL
LAND SURVEYOR

Herbert A. Farber
OREGON
JULY 26, 1985
HERBERT A. FARBER
2189

RENEWAL DATE 12-31-97

SURVEYED BY:
FARBER & SONS, INC.
dba FARBER SURVEYING
(541) 776-0846

OFFICE LOCATION: 120 MISTLETOE MEDFORD, OREGON 97501
MAILING ADDRESS: P.O. BOX 5206 CENTRAL POINT, OREGON 97502

COMPUTED BY: faf ROTATION: 0°
SCALE: 1 inch = 40 feet JOB No. 226-911
DATE: 28 JUL 1997

ORIGIN: 11500.000 N 10660.000 E