

**CERTIFIED RECORD OF MONUMENTATION**

15467

**HISTORY OF ORIGINAL MONUMENT ESTABLISHMENT:**

Section corner common to Sections 19, 20, 29 and 30, Township 37 South, Range 1 West, W.M. Reportly sut by the City of Medford circa 1955.

**DESCRIPTION OF MONUMENT EVIDENCE FOUND:**

Found 2-1/2 diameter brass disc with punch mark and 4-way slash in monument case (8" down) in the East bound traffic lane of Jackson Street near street addresses "1320" and "1324" and Hedrick Middle School play field.

**DESCRIPTION OF MONUMENT USED TO PERPETUATE THE ORIGINAL LOCATION OF THIS MONUMENT:**

Utilizing the above found location and two lead plug and tack per Second Re-Establishment Notes dated January 1996, set 2-1/2" diameter brass disc with punch mark in 2" diameter iron pipe in monument case stamped, "T37S R1W 19|20 30|29 C.S. 1997". Also set two 38 Cal. shells in top of curb and in sidewalk for reference points.

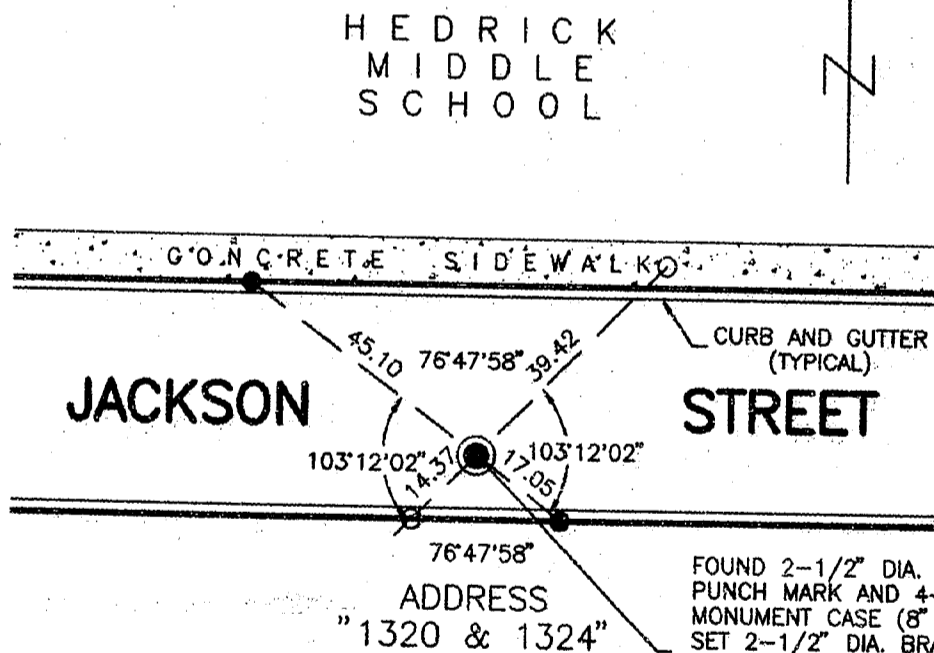
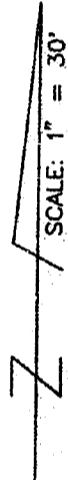
**REFERENCES:**

1. County of Jackson - Re-Establishment Notes dated January 1996
2. City of Medford - Monument References - Field Book 1718 Page 2

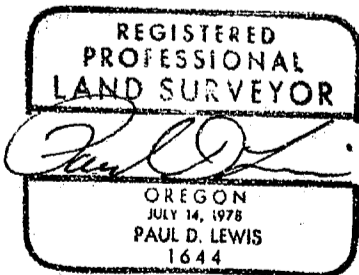
**SKETCH:**

**LEGEND**

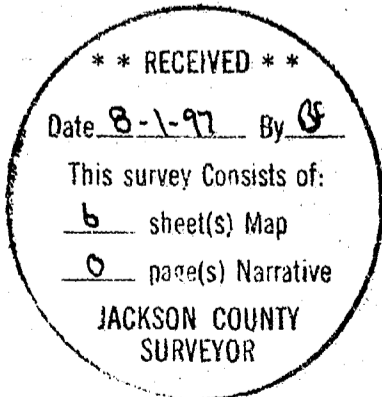
- FOUND LEAD AND TACK IN TOP OF CURB
- SET 0.38 CAL. SHELLS



FOUND 2-1/2" DIA. BRASS DISC WITH PUNCH MARK AND 4-WAY SLASH IN MONUMENT CASE (8" DOWN)  
 SET 2-1/2" DIA. BRASS DISC WITH PUNCH MARK IN 2" DIA. IRON PIPE IN MONUMENT CASE STAMPED "T37S R1W 19|20 30|29 C.S. 1997"



EXPIRES 12/31/97



**SURVEY BY:**  
 CITY OF MEDFORD  
 LAND SURVEY DIVISION  
 411 WEST EIGHTH STREET  
 MEDFORD, OREGON 97501

JUNE 1997

15467

CERTIFIED RECORD OF MONUMENTATION

15467

HISTORY OF ORIGINAL MONUMENT ESTABLISHMENT:

No record of monuments ever being set at this location. The most probable origin of these monuments are the City of Medford.

DESCRIPTION OF MONUMENT EVIDENCE FOUND:

Monuments at the intersection of Grape Street and Third Street:

1. Found 7/8" diameter pin with no mark in monument well.
2. Also found concrete monument without brass rivet - 24" down.

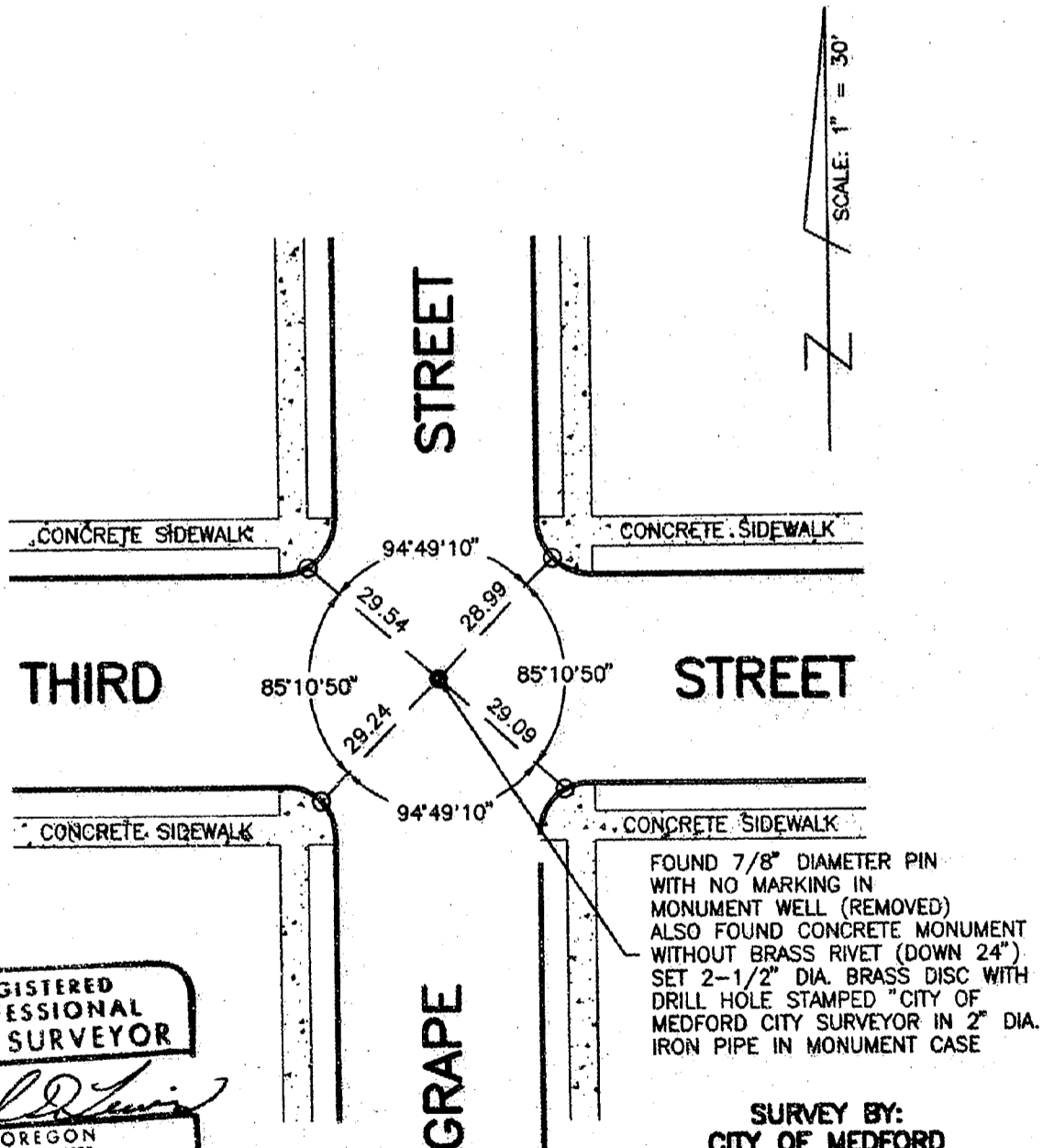
DESCRIPTION OF MONUMENT USED TO PERPETUATE THE ORIGINAL LOCATION OF THIS MONUMENT:

Utilizing the above found location, set 2-1/2" diameter brass disc with drill hole stamped "City of Medford City Surveyor" in 2" diameter iron pipe in monument case. Also set four 0.38 Cal. shells in top of curb for reference points.

REFERENCES:

1. City of Medford - Field Book 60 Page 52
2. City of Medford - North Grape Only - Field Book 83A Page 0
3. City of Medford - Third Street Only - Field Book
4. City of Medford - Monument References - Field Book 1687 Page 21

SKETCH:



REGISTERED  
PROFESSIONAL  
LAND SURVEYOR

*Paul D. Lewis*

OREGON  
JULY 14, 1978  
PAUL D. LEWIS  
1644

EXPIRES 12/31/97

FOUND 7/8" DIAMETER PIN WITH NO MARKING IN MONUMENT WELL (REMOVED) ALSO FOUND CONCRETE MONUMENT WITHOUT BRASS RIVET (DOWN 24") SET 2-1/2" DIA. BRASS DISC WITH DRILL HOLE STAMPED "CITY OF MEDFORD CITY SURVEYOR" IN 2" DIA. IRON PIPE IN MONUMENT CASE

SURVEY BY:  
CITY OF MEDFORD  
LAND SURVEY DIVISION  
411 WEST EIGHTH STREET  
MEDFORD, OREGON 97501

FEBRUARY 1997

15467

CERTIFIED RECORD OF MONUMENTATION

15467

HISTORY OF ORIGINAL MONUMENT ESTABLISHMENT:

No record of monuments ever being set at this location. The most probable origin of these monuments are the City of Medford.

DESCRIPTION OF MONUMENT EVIDENCE FOUND:

Monuments at the intersection of Grape Street and Second Street:

1. Found 7/8" diameter iron pin with no mark in monument case (down 2").
2. Also found brass rivet with punch mark in concrete (down 24") in monument case (down 12").

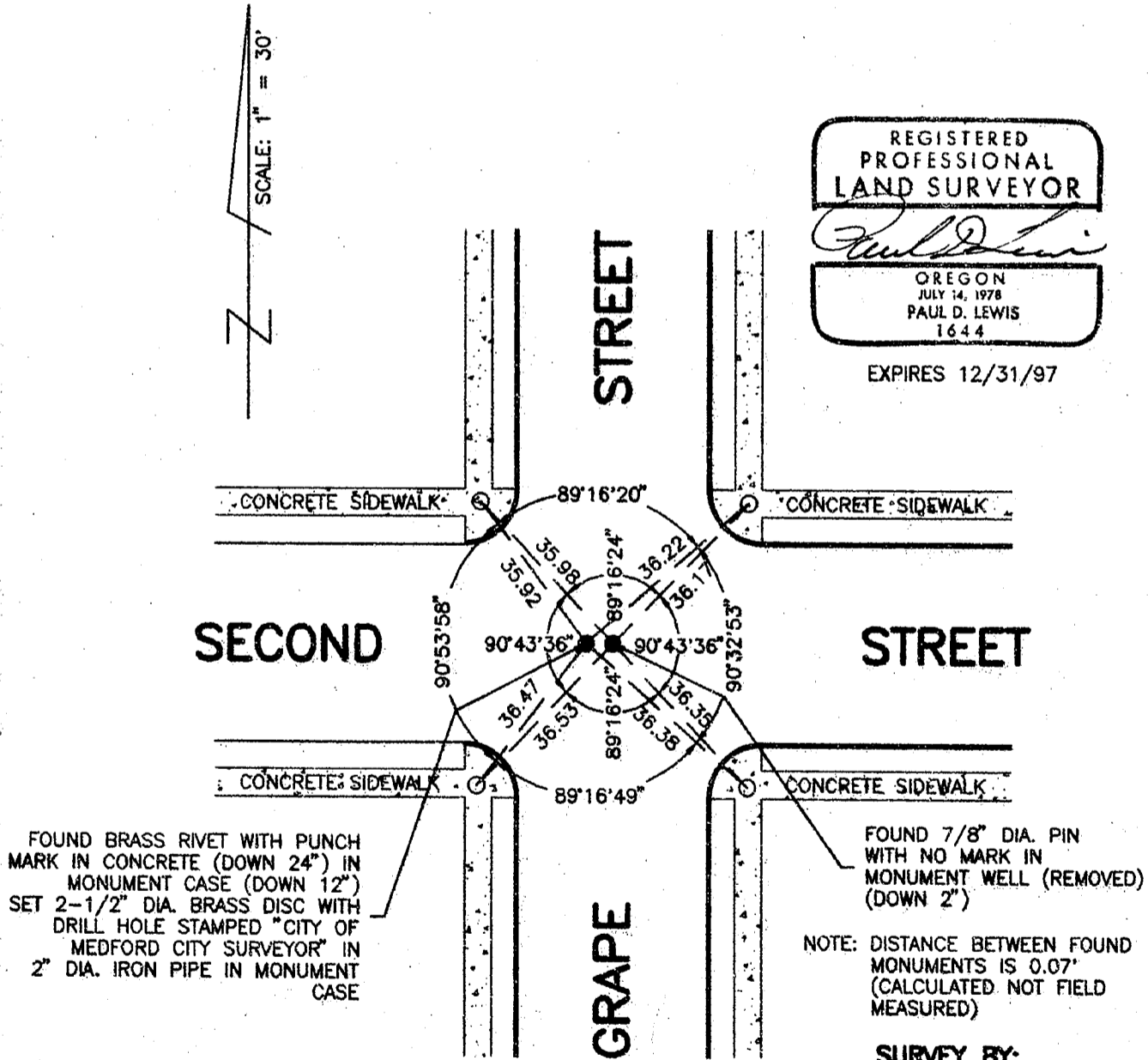
DESCRIPTION OF MONUMENT USED TO PERPETUATE THE ORIGINAL LOCATION OF THIS MONUMENT:

Utilizing the above found location(2.), set 2-1/2" diameter brass disc with drill hole stamped, "City of Medford City Surveyor" in 2" diameter iron pipe in monument case. Also set four 38 Cal. shells in sidewalk for reference points.

REFERENCES:

1. City of Medford - Field Book 60 Page 52
2. City of Medford - North Grape Only - Field Book 83A Page 0
3. City of Medford - Monument References - Field Book 1705 Page 23

SKETCH:



FOUND BRASS RIVET WITH PUNCH MARK IN CONCRETE (DOWN 24") IN MONUMENT CASE (DOWN 12") SET 2-1/2" DIA. BRASS DISC WITH DRILL HOLE STAMPED "CITY OF MEDFORD CITY SURVEYOR" IN 2" DIA. IRON PIPE IN MONUMENT CASE

FOUND 7/8" DIA. PIN WITH NO MARK IN MONUMENT WELL (REMOVED) (DOWN 2")

NOTE: DISTANCE BETWEEN FOUND MONUMENTS IS 0.07' (CALCULATED NOT FIELD MEASURED)

SURVEY BY:  
CITY OF MEDFORD  
LAND SURVEY DIVISION  
411 WEST EIGHTH STREET  
MEDFORD, OREGON 97501

FEBRUARY 1997

15467

CERTIFIED RECORD OF MONUMENTATION

15467

HISTORY OF ORIGINAL MONUMENT ESTABLISHMENT:

Being a brass disc with punch mark in monument case at the intersection of Aspen Street and Peach Street as shown upon Sellards Subdivision, filed in Volume 13 of Plats Page 14, Records of Jackson County, Oregon.

DESCRIPTION OF MONUMENT EVIDENCE FOUND:

Found brass disc with punch mark in monument case at the intersection of Aspen Street and Peach Street.

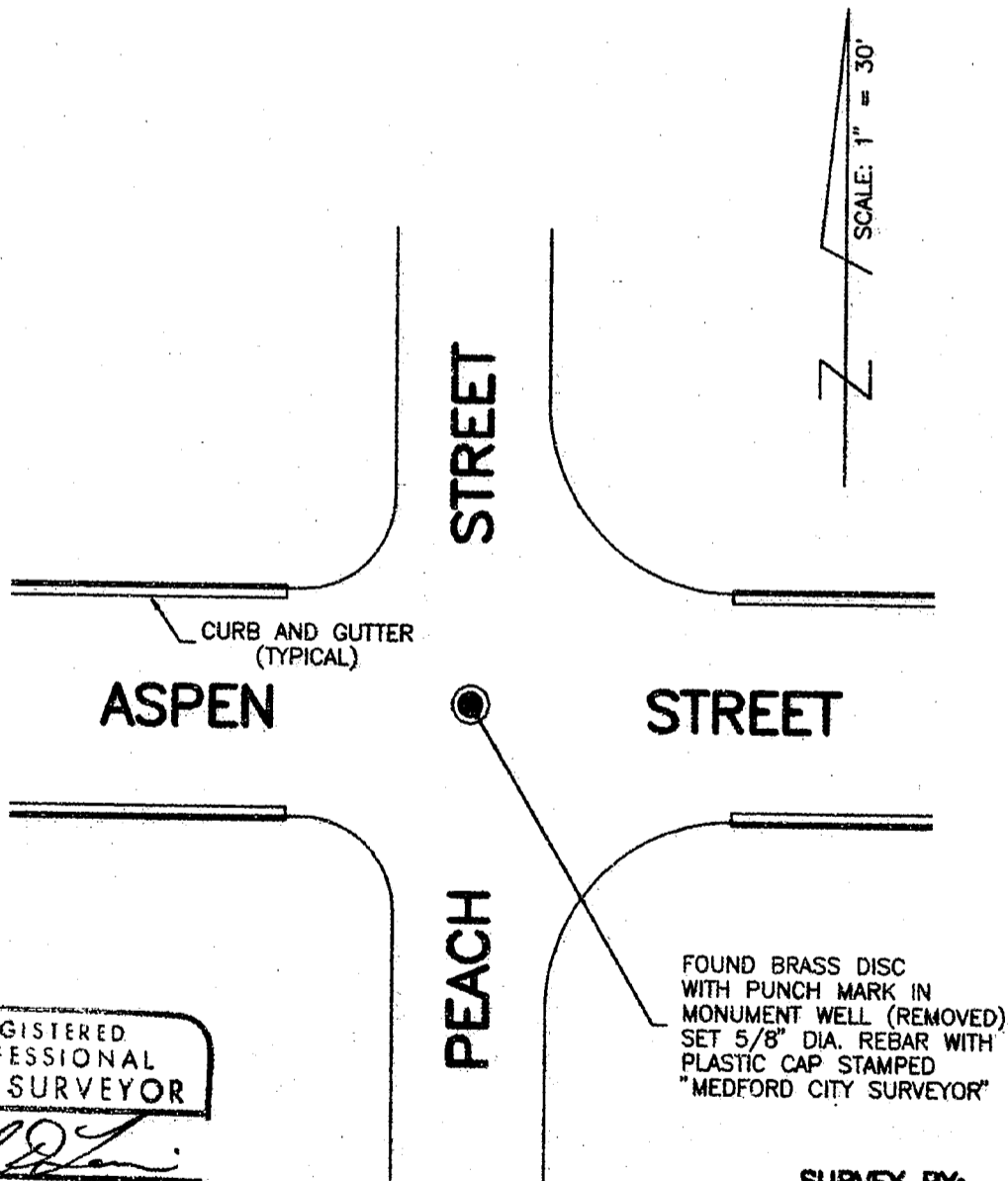
DESCRIPTION OF MONUMENT USED TO PERPETUATE THE ORIGINAL LOCATION OF THIS MONUMENT:

Utilizing the above found location, set substandard monument, 5/8" diameter rebar with plastic cap stamped "Medford City Surveyor" due to future street improvements on Peach Street.

REFERENCES:

1. Sellards Subdivision - Volume 13 of Plats Page 14, Records of Jackson County, Oregon
2. City of Medford - Peach Street - Field Book 1699 Pages 5-6 & 19

SKETCH:



REGISTERED  
PROFESSIONAL  
LAND SURVEYOR

*Paul D. Lewis*

OREGON  
JULY 14, 1978  
PAUL D. LEWIS  
1644

EXPIRES 12/31/97

SURVEY BY:  
CITY OF MEDFORD  
LAND SURVEY DIVISION  
411 WEST EIGHTH STREET  
MEDFORD, OREGON 97501

APRIL 1997

T.37S. R.2W. 36DB

PAGE 3 OF 6

15467

CERTIFIED RECORD OF MONUMENTATION

15467

HISTORY OF ORIGINAL MONUMENT ESTABLISHMENT:

No record of monument ever being set at this location. The most probable origin of this monument is the City of Medford.

DESCRIPTION OF MONUMENT EVIDENCE FOUND:

Found 7/8" diameter pin without mark (down 2") outside of monument case at the intersection of Holly Street and Second Street.

DESCRIPTION OF MONUMENT USED TO PERPETUATE THE ORIGINAL LOCATION OF THIS MONUMENT:

Utilizing the above found location, set 2-1/2" diameter brass disc with drill hole in 2" diameter iron pipe in monument case stamped, "City of Medford City Surveyor". Also set three 38 Cal. shells in top of curb and in sidewalks for reference points.

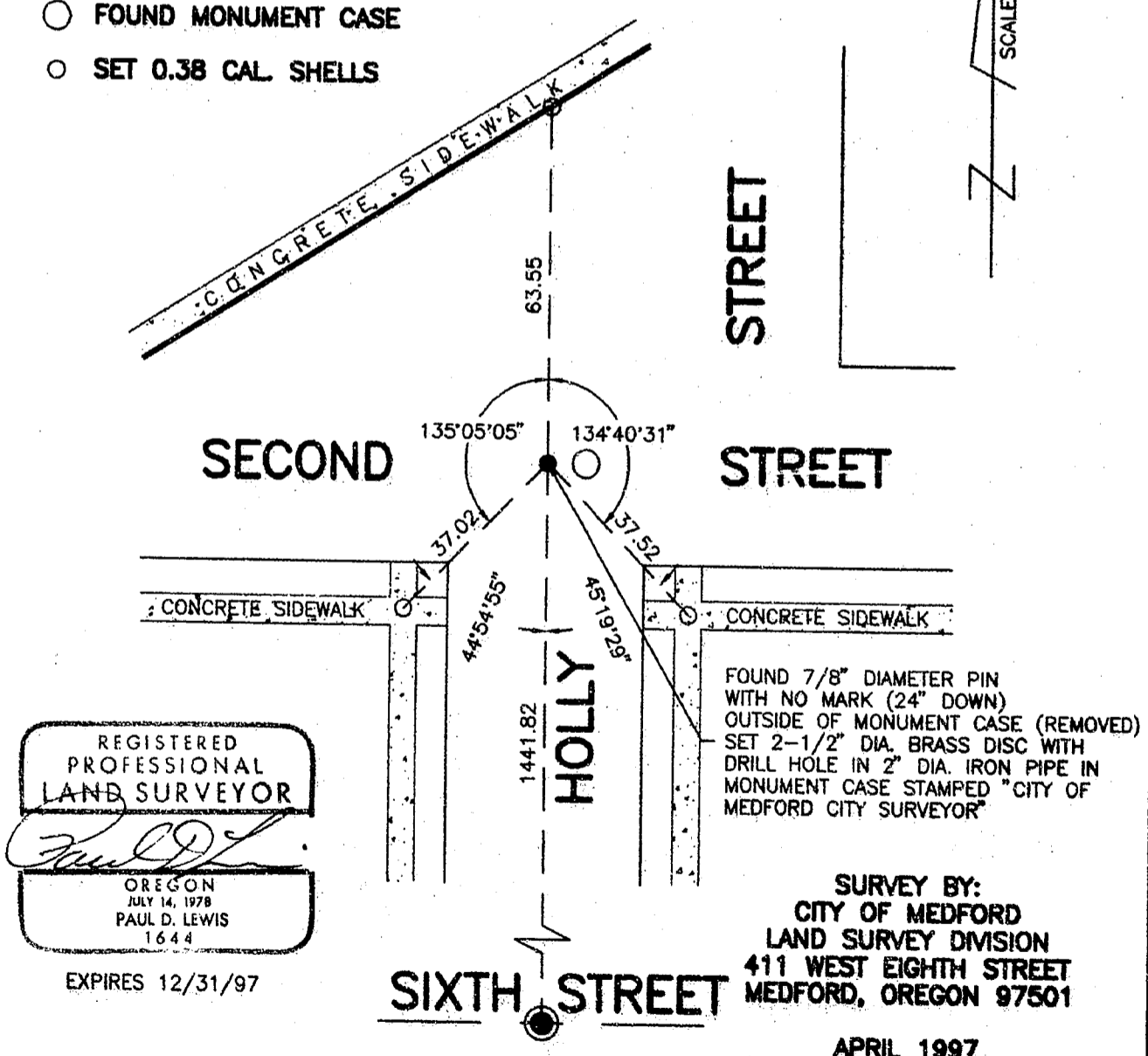
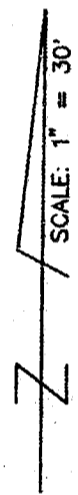
REFERENCES:

1. City of Medford - Monument References - Field Book 1687 Page 33

SKETCH:

LEGEND

- FOUND 7/8" DIA. SMOOTH PIN WITH "X" IN MONUMENT CASE (DOWN 2")
- FOUND MONUMENT CASE
- SET 0.38 CAL. SHELLS



15467

CERTIFIED RECORD OF MONUMENTATION

15467

HISTORY OF ORIGINAL MONUMENT ESTABLISHMENT:

One-Quarter corner common to Sections 20 and 29, Township 37 South, Range 1 West, W.M.

DESCRIPTION OF MONUMENT EVIDENCE FOUND:

Found 2-1/2 diameter brass disc with punch mark in concrete (down 1") stamped "T37S R1W 1/4 S 20/29 C.S. 1980", also found 1" diameter iron pipe destroyed during removal in concrete (down 18") at the intersection of Jackson Street and Sunrise Avenue.

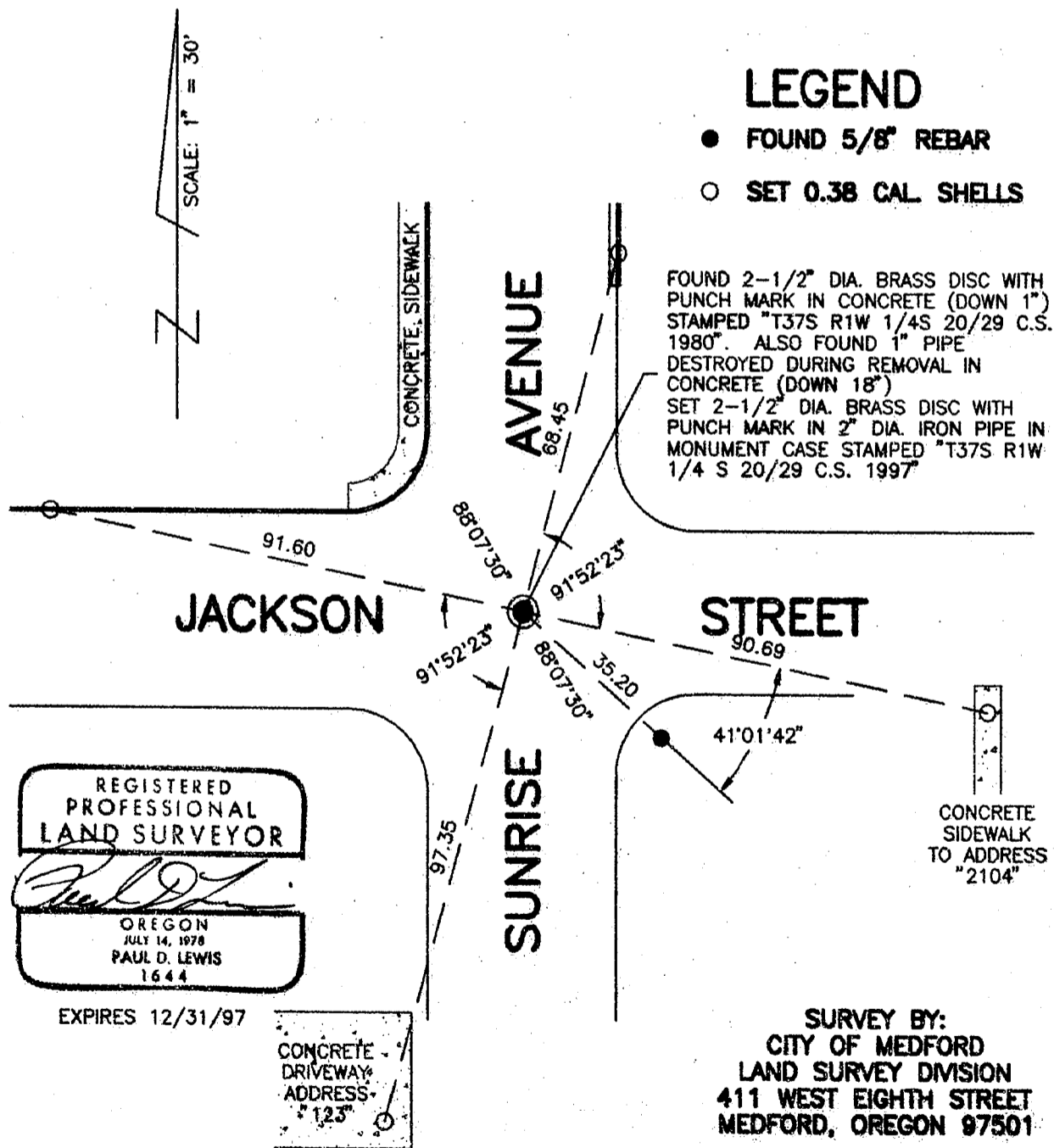
DESCRIPTION OF MONUMENT USED TO PERPETUATE THE ORIGINAL LOCATION OF THIS MONUMENT:

Utilizing the above found location and 5/8" rebar per Second Re-Establishment Notes dated July 31, 1980, set 2-1/2" diameter brass disc with punch mark in 2" diameter iron pipe in monument case stamped, "T37S R1W 20/29 C.S. 1997". Also set four 3/8 Cal. shells in top of curb (2), sidewalk and driveway for reference points.

REFERENCES:

1. County of Jackson - Re-Establishment Notes dated January 1997
2. City of Medford - Monument References - Field Book 1704 Page 34

SKETCH:



SURVEY BY:  
 CITY OF MEDFORD  
 LAND SURVEY DIVISION  
 411 WEST EIGHTH STREET  
 MEDFORD, OREGON 97501

JUNE 1997

15467