

SURVEYOR

CITY OF ASHLAND
 Engineering Division
 City Hall
 Ashland, Oregon 97520
 SCALE: 1" = 10'
 BASIS OF BEARING:

APRIL 1, 1997
 Everett L. Swain, P.L.S.
 Assistant City Surveyor
 Telephone: 1-541-488-5347
 True Meridian at the
 N-S Centerline Sec. 9
 (derived from Jackson County Surveyor's)
 (N.O.A.A. not established in 1968)

MAP of SURVEY
 located in
 Donation Land Claim Nos. 41, 42, and 43 in the
 Southeast Quarter of Section 4,
 Township 39 South, Range 1 East of the
 Willamette Base & Meridian, Jackson County, Oregon.

City of Ashland

20 East Main St.
 Ashland, Oregon 97520

Survey Narrative to comply with O.R.S. 209.250
Oregon Revised Statutes

Field investigation of the Southeast corner of Donation Land Claim No. 41, Township 39 South, Range 1 East of the Willamette Base and Meridian, Jackson County, Oregon, revealed a sanitary sewer manhole rim and lid that closely resembled that detail shown on Filed Survey No. 13679, filed in the office of the Jackson County Surveyor. Also, found were three (3) of the four (4) reference monuments and the North five foot (5') Witness Monument from the same filed survey. The fourth (4th) reference monument and the West five foot (5') Witness Monument had been destroyed during installation of utilities in the immediate area, by others.

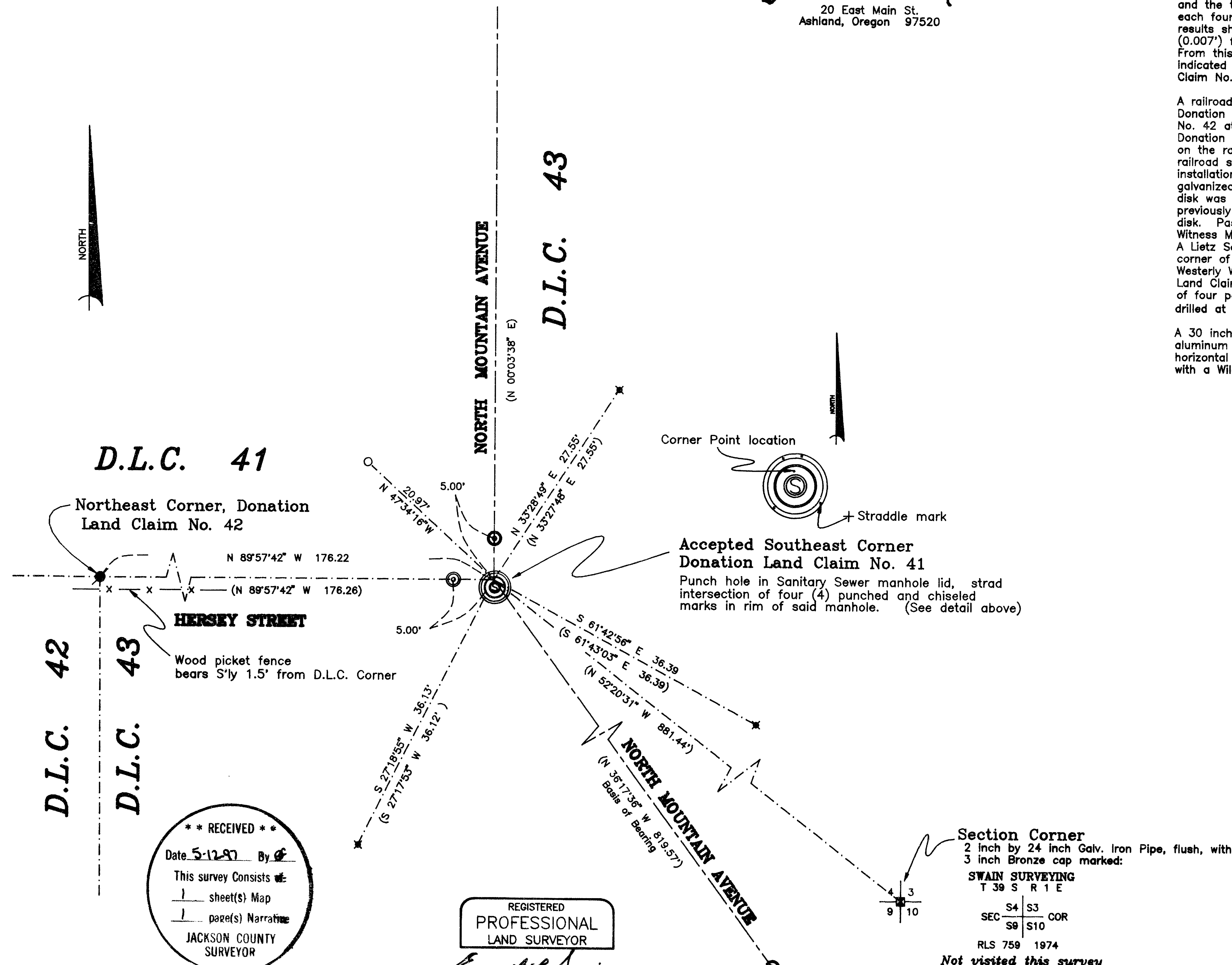
A punch mark was placed at the intersection of the straddle marks found on the manhole rim, and a Wild T2 theodolite, in good adjustment, was placed over the point. Angles were turned between independent horizontal control and the three (3) reference monuments found. Distances were measured to each found reference monument by use of a Wild Invar Subtense Bar. The results showed no distance to vary more than seven thousandths of a foot (0.007') from that of record and the horizontal angles were acceptable. From this evidence it was determined that the Manhole straddle marks still indicated the Accepted location of the Southeast corner of Donation Land Claim No. 41.

A railroad spike was then set on line between the Southeast corner of Donation Land Claim No. 41 and the Northeast corner of Donation Land Claim No. 42 at a distance of five feet (5.00') from the Southeast corner of Donation Land Claim No. 41 and a punch mark place thereon. The punch mark on the railroad spike was then referenced by using cross straddles. The railroad spike was removed and a hole dug large enough to allow the installation of a monument case in which a 30 inch long by 1 inch diameter galvanized iron pipe was driven 33 inches deep. A 3 inch diameter bronze disk was then placed in the top of said galvanized iron pipe. Utilizing the previously set reference straddle marks, place a punch mark on said bronze disk. Passive reflectors were then set at the Westerly five foot (5.00') Witness Monument and at the Southeast corner of Donation Land Claim No. 41. A Lietz Set 4, in good adjustment, was placed over the found Northeast corner of Donation Land Claim No. 42. Distances were measured to both the Westerly Witness Monument set and the found Southeast corner of Donation Land Claim No. 41. The difference in distances resulted in a measurement of four point nine nine five feet (4.995'). The bronze disk was then drilled at the punch hole previously set.

A 30 inch long by 5/8 inch diameter iron rod with a 1.5 inch diameter aluminum cap was set to replace the Northwest reference monument. The horizontal angle and distance was measured to the set reference monument with a Wild T2 and a Wild Invar Subtense Bar.

LEGEND

- ✱ Found Aluminum Cap marked:
 CITY OF ASHLAND
 R.P. 1993
 w/ punch mark
- Found 3" Br. Cap in concrete filled
 PVC sleeve marked:
 CITY OF ASHLAND
 T 39 S R 1 E
 DLC 41
 DLC 42 | DLC 43
 1993
 LS 759
 SURVEY MARKER
- ⊙ Found 3" Br. disk in Mon. Case
 marked:
 CITY OF ASHLAND
 1993
 SURVEY MARKER
 w/ drill hole
- ⊙ Set 1"x30" Galvanized Iron Pipe
 w/ 3" Bronze disk in Mon Case
 marked:
 CITY OF ASHLAND
 1997
 LS 759
 SURVEY MARKER
 w/ drill hole
- Set 5/8"x30" Iron Rod w/
 Aluminum Cap marked:
 CITY OF ASHLAND
 R.P. 1997
 w/ punch mark
- () Indicates record Bearing and Distance
 from Filed Survey No. 13679



D.L.C. 41

D.L.C. 42

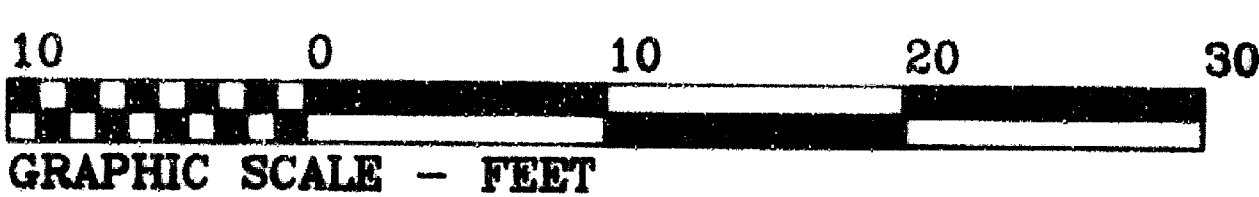
D.L.C. 43

D.L.C. 43

**** RECEIVED ****
 Date 5-12-97 By [Signature]
 This survey consists of:
 1 sheet(s) Map
 1 page(s) Narrative
JACKSON COUNTY
SURVEYOR

REGISTERED
 PROFESSIONAL
 LAND SURVEYOR
Everett L. Swain
 OREGON
 JULY 8, 1966
 EVERETT L. SWAIN
 759
 Surveyor's Registration
 Renewal Date: June 30, 1998

Section Corner
 2 inch by 24 inch Galv. Iron Pipe, flush, with
 3 inch Bronze cap marked:
SWAIN SURVEYING
 T 39 S R 1 E
 SEC 4 S3
 S9 S10 COR
 RLS 759 1974
 Not visited this survey



Assessor's Map: 39S-R 1 E-4DD

JOB: C:\CG4AC\DATA\SEDL41\SEDL41.CRD
 SCREEN FILE: C:\CG4AC\DATA\SEDL41\SE41R12.DWG