

15260

OREGON DEPARTMENT OF TRANSPORTATION
 Located Line
TRAIL CREEK (MAIN ST.) BRIDGE
 RELOCATED OLD CRATER LAKE HIGHWAY
 JACKSON COUNTY
 Scale: 1:1000
 November 1996

BEARINGS BASED ON JACKSON COUNTY SURVEYORS FILE NO. 13613

ASSUMED COORDINATES

THIS DRAWING PREPARED FROM A JACKSON COUNTY SURVEY CONTRACTED BY CBEC CONSULTING ENGINEERS. THE SURVEY NOTES ARE RETAINED IN THE FILES AS FIELD BOOK NUMBER 114-25.

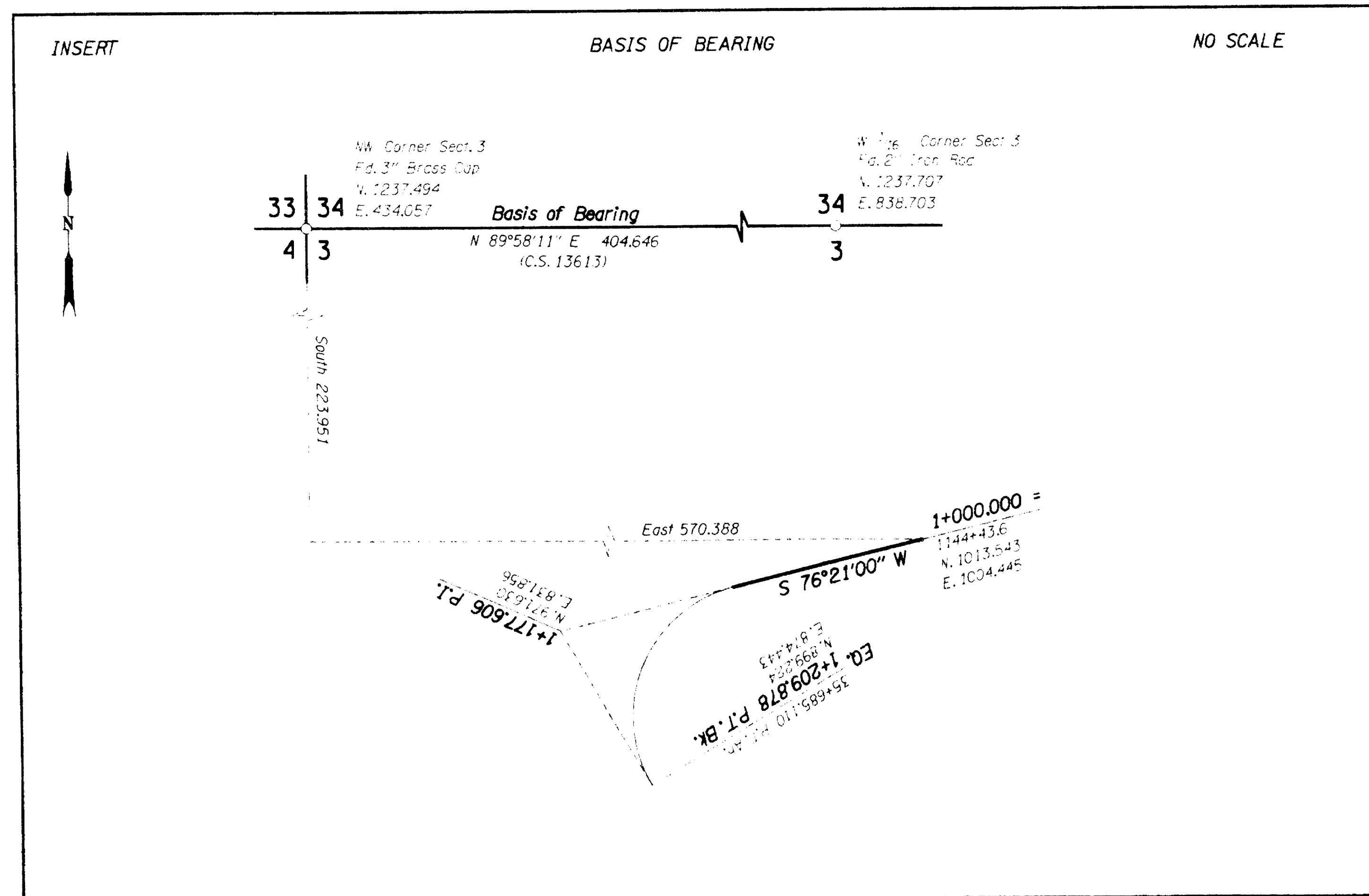
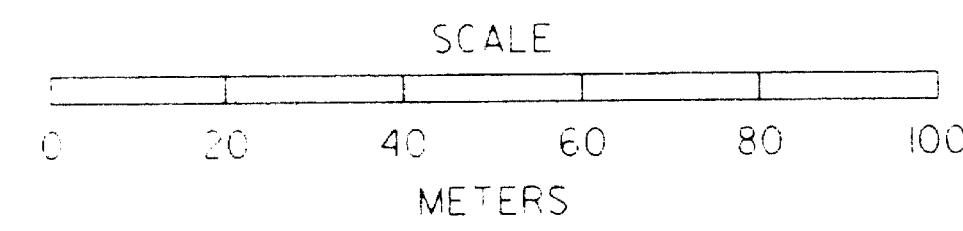
PROJECT NO. 6486
DRG. NO 10B-10-7

NOV 26 1996

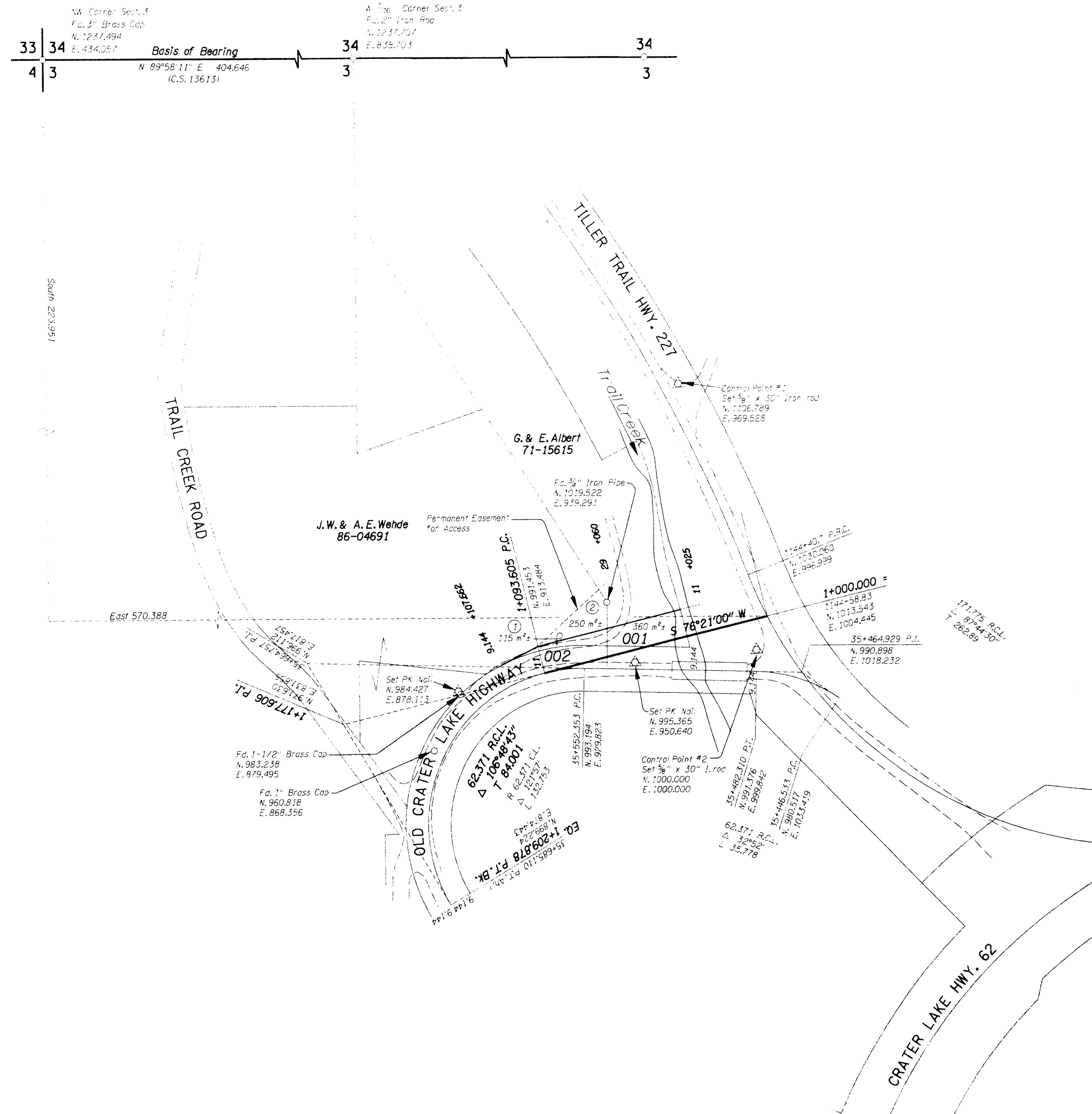
114025RW.dgn

Nov-1996

SLW



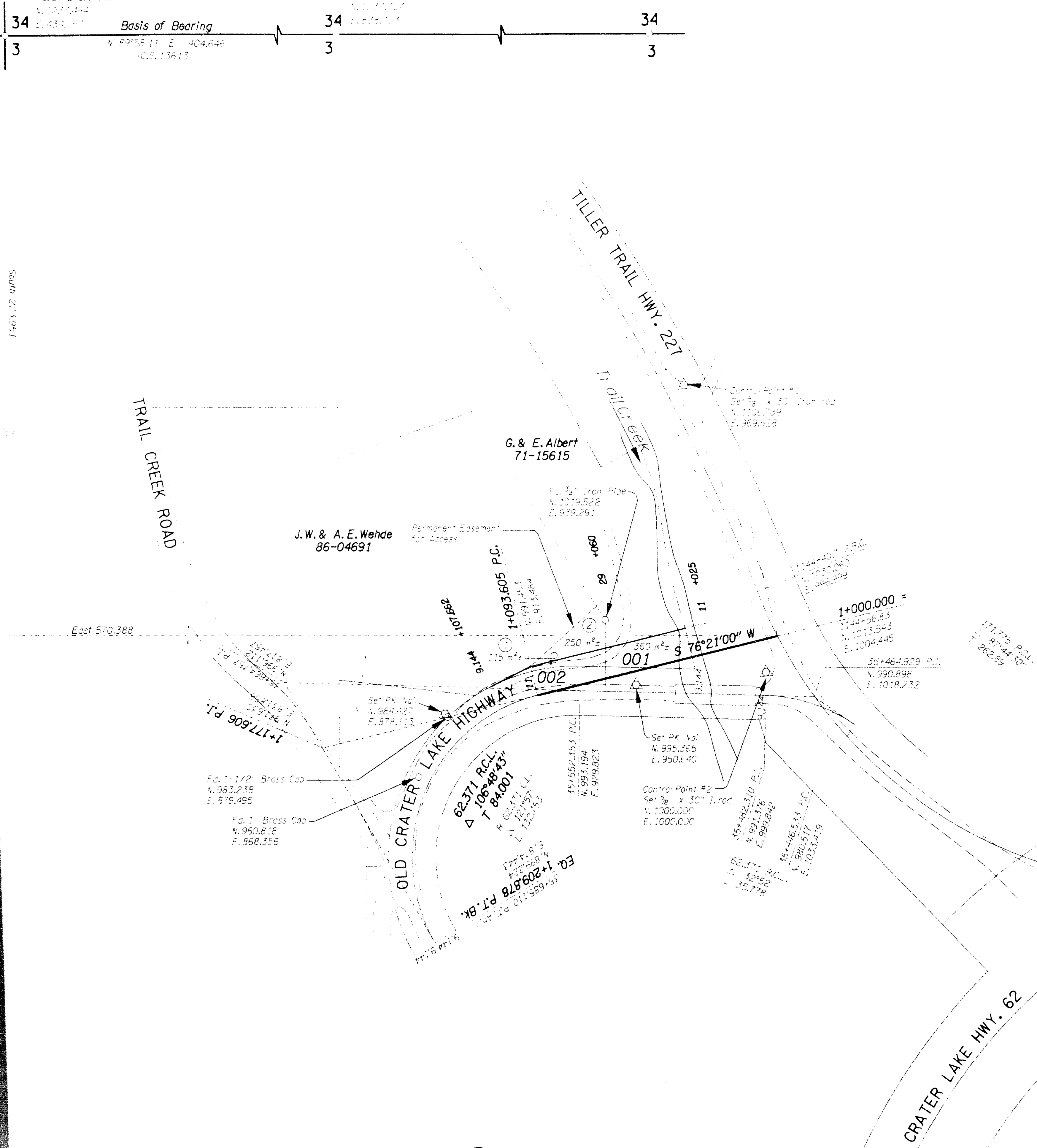
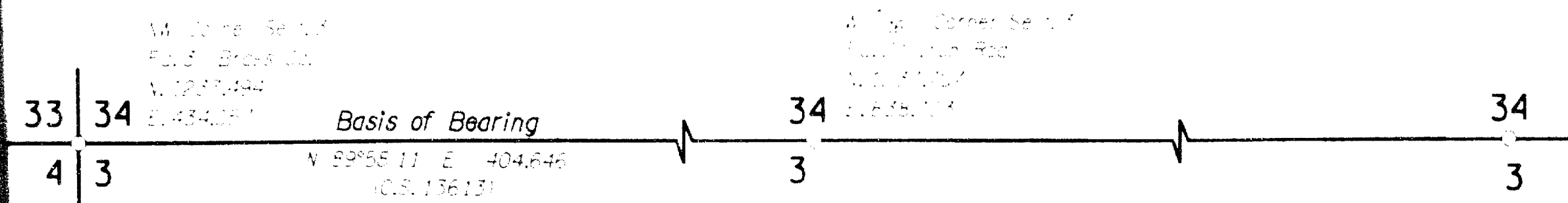
N.W. 1/4 SEC. 3, T.34S., R.1W., W.M.
DRG. NO. 10B-10-7
PROJECT NO. 6486



1 OF 2

TRAIL CREEK (MAIN ST.) BRIDGE RELOCATED OLD CRATER LAKE HIGHWAY JACKSON COUNTY PROJECT NO. 10B-10-7 DRG. NO. 10B-10-7 SCALE: 1:1000 LOCATED LINE

N.W. 1/4 SEC. 3, T.34S., R.1W., W.M.
 DRG. NO. 10B-10-7
 PROJECT NO. 6486



2 OF 2

TRAIL CREEK (MAIN ST.) BRIDGE
 RELOCATED OLD CRATER LAKE HIGHWAY
 JACKSON COUNTY
 LOCATED LINE
 SCALE: 1:1000
 DRG. NO.
 PROJECT NO. 6486

TRAIL CREEK (MAIN ST.) BRIDGE RELOCATED OLD CRATER LAKE HIGHWAY JACKSON COUNTY LOCATED LINE SCALE: 1:1000 DRG. NO. 10B-10-7 PROJECT NO. 6486