

Horizontal Control Survey Map for the Oregon Department of Transportation

NW1/4 and SW1/4, Section 33, T.39S., R.3E., W.M.

Jackson County

Survey Completed 5 March 1994

Scale 1" = 200'

SURVEY NARRATIVE

The purpose of the traverse was to establish horizontal control for an Oregon Department of Transportation bridge replacement project named "Keene Creek Bridge" on the Greensprings Highway

A traverse of "set" horizontal control monuments was established including GPS monuments TAIN and KEEN. Raw closure was 1:96,000 with a final adjusted closure (Compass Rule) of 1:216,000.

A Wild T1610 Electronic Theodolite and DI1600 Distomat were used to make all observations. The T1610 has a standard angular error of +/- 1.5 seconds and the DI1600 has a standard distance error of +/- 3mm +/- 2 ppm.

BEARINGS: Oregon Coordinate System of 1983, 1991 adjustment, south zone.

COORDINATES: This drawing utilizes a Local Datum Plane (LDP) which is relative to the Oregon Coordinate System of 1983, 1991 adjustment, south zone, with respect to the local latitude and ground elevation. The LDP coordinates define true ground distances. To convert the LDP coordinates to the Oregon Coordinate System of 1983, 1991 adjustment, south zone, multiply the LDP coordinates by 0.99983798.

FIELD NOTES: This drawing shows the results of an Oregon Department Of Transportation (ODOT) survey. The field survey notes, book number 3394 are available from ODOT files in Salem, Oregon. Reference horizontal control map to ODOT Right/Way Map 10B-8-9 (rev. August 1995)

TRAVERSE MONUMENT TABLE

MONUMENT NUMBER	NORTHING	EASTING	DATE FOUND OR SET	DESCRIPTION
1	175,386.73	4,384,482.71	SET 3-31-94	SEE NOTE A
2	175,727.69	4,385,067.84	SET 3-31-94	SEE NOTE A
3	176,351.67	4,385,305.89	SET 3-31-94	SEE NOTE A
4	176,613.07	4,385,646.53	SET 3-31-94	SEE NOTE A
5	176,919.63	4,385,876.17	FD. 3-31-94	SEE NOTE B
6	176,444.39	4,385,873.83	FD. 4-1-94	SEE NOTE C
7	175,958.50	4,385,655.03	SET 4-1-94	SEE NOTE A
8	175,498.41	4,385,579.86	SET 4-1-94	SEE NOTE A
9	175,136.62	4,385,708.30	SET 4-1-94	SEE NOTE A
10	175,188.75	4,384,756.64	SET 4-1-94	SEE NOTE A
11	174,989.99	4,383,927.03	SET 4-1-94	SEE NOTE A
12	174,739.97	4,383,860.33	SET 4-1-94	SEE NOTE A
13	174,489.65	4,383,857.15	SET 4-1-94	SEE NOTE A
14	174,285.52	4,383,819.15	FD. 4-1-94	SEE NOTE D
15	174,584.11	4,383,691.18	SET 4-1-94	SEE NOTE A
16	174,924.06	4,383,818.96	SET 4-1-94	SEE NOTE A
TAIN (17)	175,260.926	4,383,986.103	FD. 3-31-94	SEE NOTE E
KEEN	176,564.667	4,379,597.843	FD. 3-31-94	SEE NOTE F

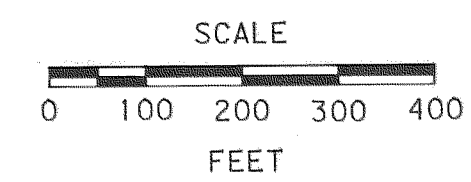
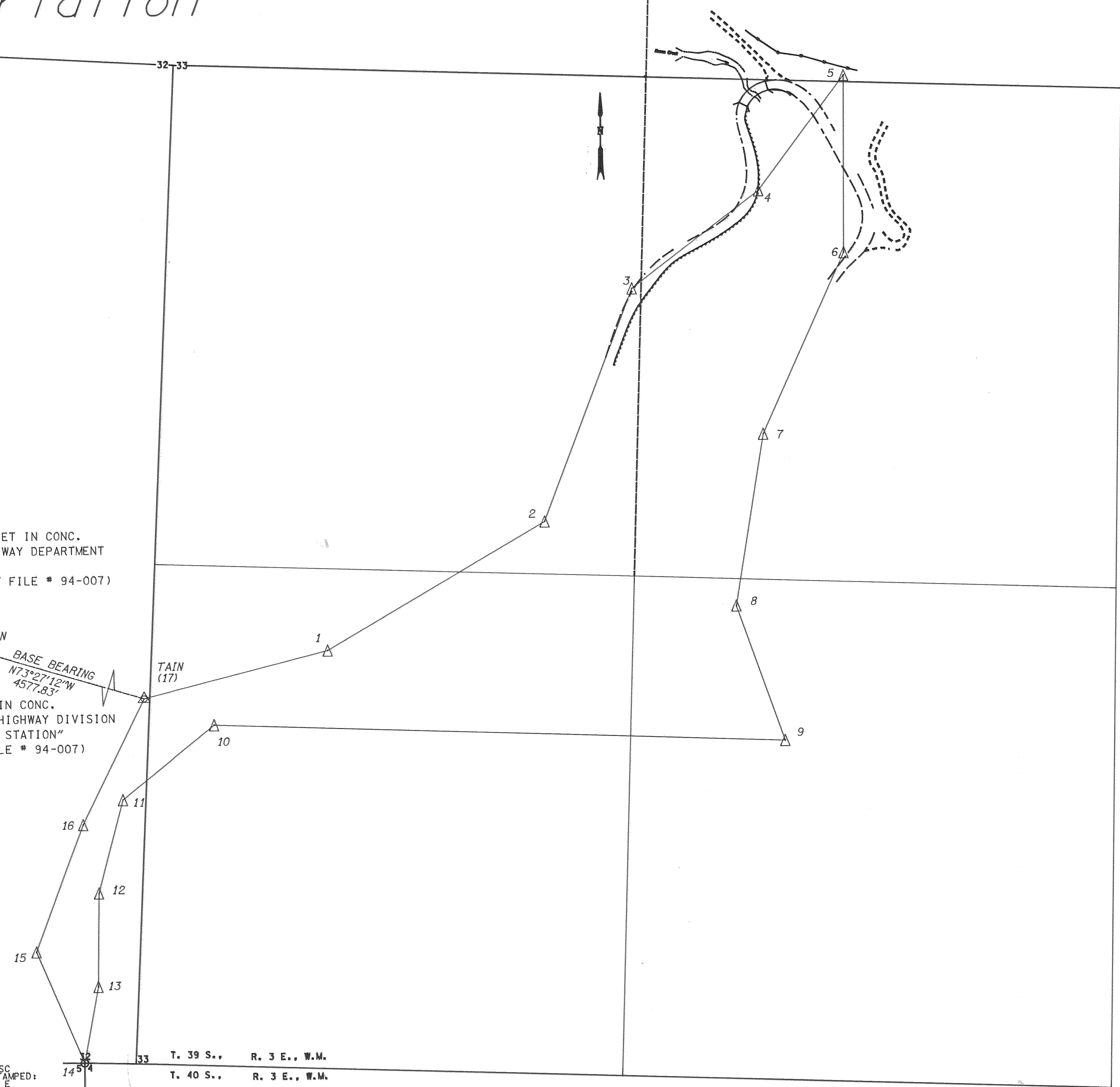
NOTES:

- A: SET 3/8" REBAR WITH 1/2" ALUMINUM CAP STAMPED: OSHD HORIZ CONTROL
- B: FOUND 3/8" REBAR WITH 1/2" ALUMINUM CAP STAMPED: OSHD HORIZ CONTROL *1*
- C: FOUND 3/8" REBAR WITH 1/2" ALUMINUM CAP STAMPED: OSHD HORIZ CONTROL *2*
- D: FOUND 2" BRASS DISC SET ON 1" IRON PIPE STAMPED: T 39 & 40 S R 3 E SEC. COR. 32-5-4 1965
- E: FOUND 3" BRASS DISC SET IN CONCRETE STAMPED: OREGON STATE HIGHWAY DIVISION TAIN 1994 TRIANGULATION STATION (ODOT PHOTOGRAMMETRY FILE # 94-007)
- F: FOUND 3" BRASS DISC SET IN CONCRETE STAMPED: STATE HIGHWAY DEPARTMENT REFERENCE KEEN (ODOT PHOTOGRAMMETRY FILE # 94-007)

FD. 3" BRASS DISC SET IN CONC.
STAMPED: "STATE HIGHWAY DEPARTMENT REFERENCE KEEN"
(ODOT PHOTOGRAMMETRY FILE # 94-007)
(3-31-94)
N. 176,564.667
E. 4,379,597.843

FD. 3" BRASS DISC SET IN CONC.
STAMPED: "OREGON STATE HIGHWAY DIVISION TAIN 1994 TRIANGULATION STATION"
(ODOT PHOTOGRAMMETRY FILE # 94-007)
(3-31-94)
N. 175,260.926
E. 4,383,986.103

FD. 2" BRASS DISC SET ON 1" IRON PIPE STAMPED: T 39 & 40 S R 3 E SEC. COR. 32-5-4 1965
(4-1-94)
N. 174,285.52
E. 4,383,819.15



REGISTERED PROFESSIONAL LAND SURVEYOR
Joan C. Symons
OREGON
JANUARY 29, 1991
Joan C. Symons
2486

RECEIVED
Date 12-4-98 By BC
This survey consists of:
1 sheet(s) Map
0 page(s) Narrative
JACKSON COUNTY SURVEYOR

Expires 30 June 1998
Joan C. Symons
Oregon Department of Transportation
6475 Crater Lake Highway
Central Point, Oregon 97502