

BOUNDARY SURVEY

FOR NORTHWEST TIMBERLANDS LYING IN SECTION 33, TOWNSHIP 36 SOUTH, RANGE 4 WEST OF THE WILLAMETTE MERIDIAN
OCTOBER, 1996
1" = 300'

① NORTH 1/4 CORNER ACCESSORIES

- 4" Madrone bears N25°W 23.7 feet, scribed "N1/4 S33 BT"
- 6" Madrone bears N61°E 38.2 feet, scribed "N1/4 S33 BT"
- 3" Doug Fir bears N83°E 19.0 feet, scribed "N1/4 S33 BT"
- 3" Doug Fir bears S36°E 12.8 feet, scribed "N1/4 S33 BT"

② CENTER 1/4 CORNER ACCESSORIES

- 5" Madrone bears S30°E 20.0 feet, scribed "C1/4 S33 BT"
- 6" Madrone bears N33°E 39.6 feet, scribed "C1/4 S33 BT"
- 5" Oak bears N33°W 9.0 feet, scribed "C1/4 S33 BT"
- 5" Oak bears N31°W 19.9 feet, scribed "C1/4 S33 BT"

③ EAST 1/16 CORNER ACCESSORIES

- 5" Doug Fir bears West 4.1 feet, scribed "E1/16 S33 BT"
- 15" Oak bears N32°E 27.0 feet, scribed "E1/16 S33 BT"

④ NORTHEAST 1/16 CORNER ACCESSORIES

- 8" Doug Fir bears N81°W 18.4 feet, scribed "NE1/16 S33 BT"
- 10" Doug Fir bears S84°E 36.5 feet, scribed "NE1/16 S33 BT"

⑤ CENTEREAST 1/16 CORNER ACCESSORIES

- 11" Madrone bears S86°E 21.3 feet, scribed "CE1/16 S33 BT"
- 4" Doug Fir bears N10°E 7.3 feet, scribed "CE1/16 S33 BT"

⑥ SOUTHEAST 1/16 CORNER ACCESSORIES

- 13" Oak bears S88°W 18.0 feet, scribed "SE1/16 S33 BT"
- 9" Madrone bears S37°W 31.0 feet, scribed "SE1/16 S33 BT"

⑦ CENTEREAST SOUTHEAST 1/64 CORNER ACCESSORIES

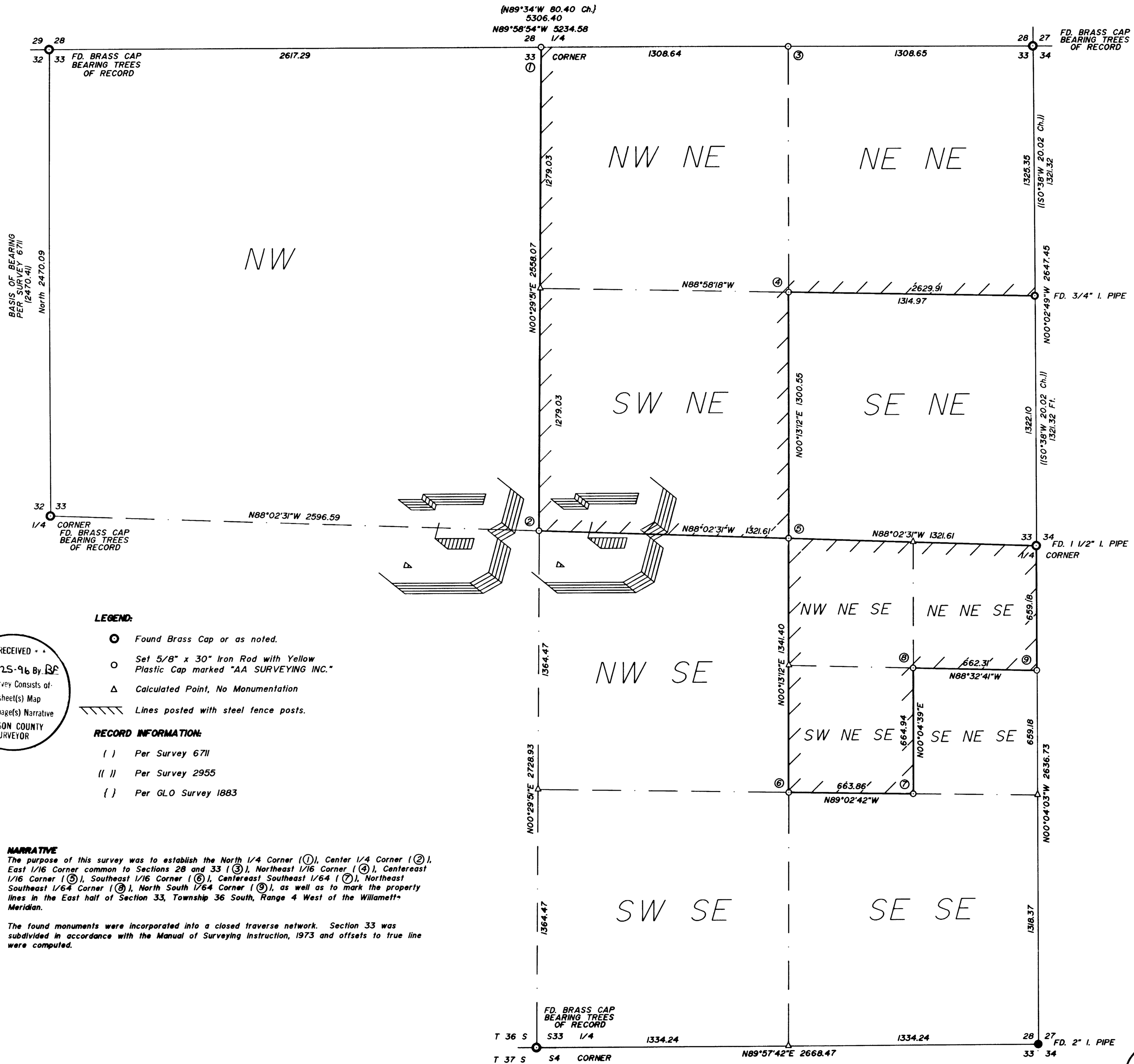
- 4" Oak bears S84°W 7.0 feet, scribed "CE-SE1/64 S33 BT"
- 4" Oak bears S24°W 23.8 feet, scribed "CE-SE1/64 S33 BT"

⑧ NORTHEAST SOUTHEAST 1/64 CORNER ACCESSORIES

- 5" Oak bears S64°E 27.3 feet, scribed "NE-SE1/64 S33 BT"
- 4" Madrone bears N11°E 17.3 feet, scribed "NE-SE1/64 S33 BT"

⑨ NORTH SOUTH 1/64 CORNER ACCESSORIES

- 5" Doug Fir bears S60°E 7.0 feet, scribed "N-S-SE1/64 S33 BT"
- 10" Doug Fir bears N8°E 4.6 feet, scribed "N-S-SE1/64 S33 BT"



* * RECEIVED * *
Date: 11-25-96 By: RF
This survey consists of:
1 sheet(s) Map
1 page(s) Narrative
JACKSON COUNTY
SURVEYOR

- LEGEND:**
- Found Brass Cap or as noted.
 - Set 5/8" x 30" Iron Rod with Yellow Plastic Cap marked "AA SURVEYING INC."
 - △ Calculated Point, No Monumentation
 - Lines posted with steel fence posts.

- RECORD INFORMATION:**
- () Per Survey 671
 - (|) Per Survey 2955
 - () Per GLO Survey 1883

NARRATIVE
The purpose of this survey was to establish the North 1/4 Corner (1), Center 1/4 Corner (2), East 1/16 Corner common to Sections 28 and 33 (3), Northeast 1/16 Corner (4), Centereast 1/16 Corner (5), Southeast 1/16 Corner (6), Centereast Southeast 1/64 (7), Northeast Southeast 1/64 Corner (8), North South 1/64 Corner (9), as well as to mark the property lines in the East half of Section 33, Township 36 South, Range 4 West of the Willamette Meridian.
The found monuments were incorporated into a closed traverse network. Section 33 was subdivided in accordance with the Manual of Surveying Instruction, 1973 and offsets to true line were computed.

1741-86.DWG

REGISTERED
PROFESSIONAL
LAND SURVEYOR

JULY 14, 1978
HERMAN A. PIESKE
1981

EXP. DATE: 12-31-98

AAA

SURVEYING SERVICE, INC.

ENGINEERING • SURVEYING • PLANNING
3076 NE DIAMOND LAKE BLVD.
ROSEBURG, OREGON 97470
TEL (541) 672-2098
FAX (541) 672-0611