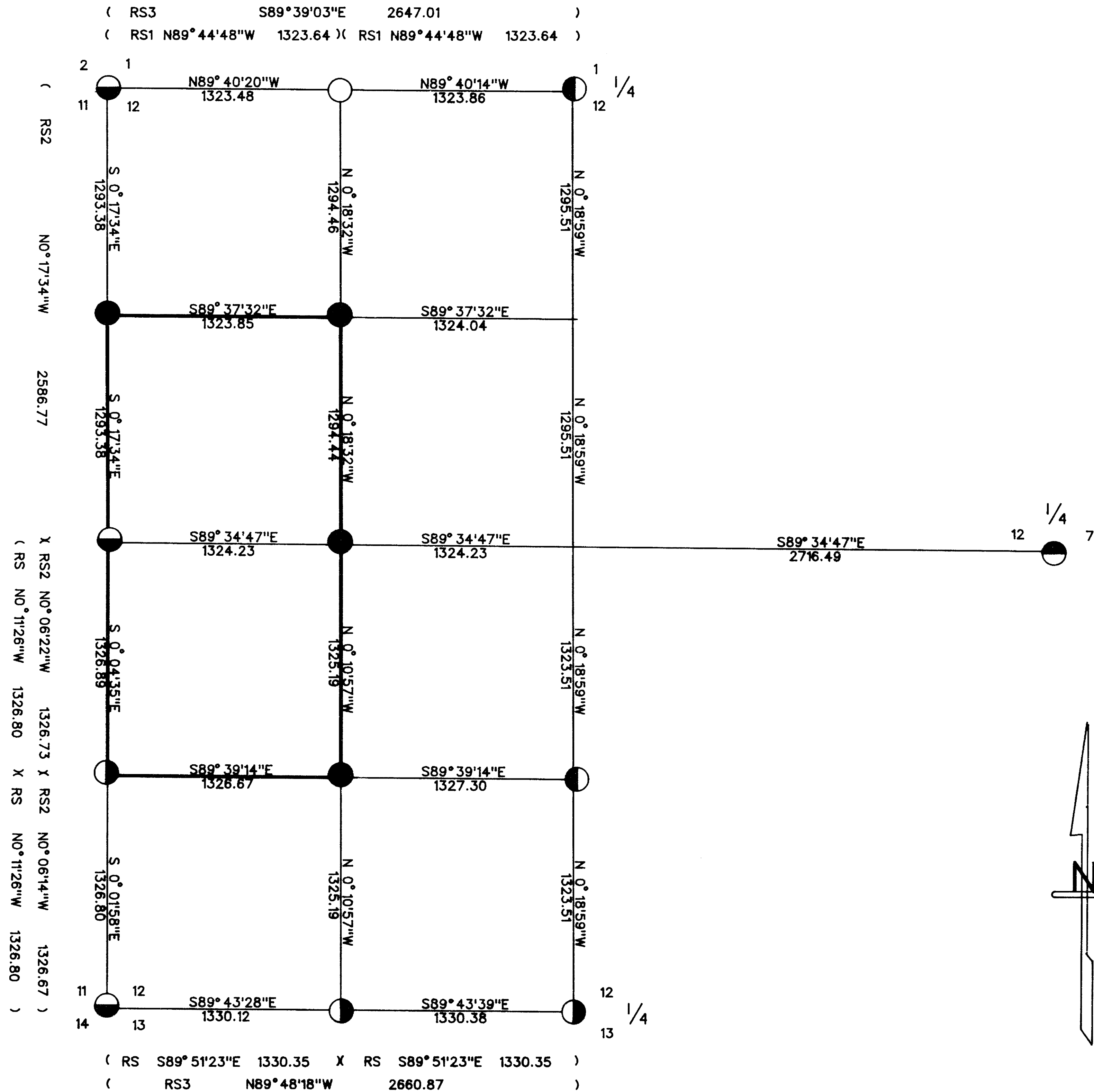


W1/2 S12 T38S R1E W.M.

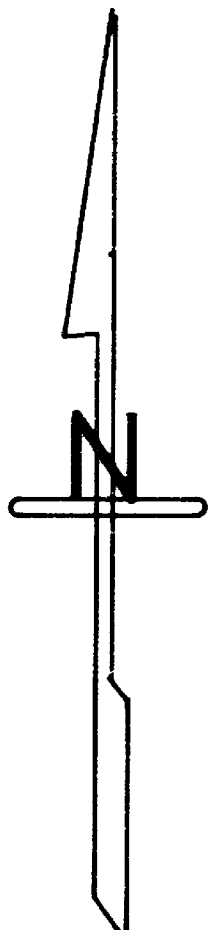


CERTIFICATE OF SURVEY

I, ARTHUR R. RAMBO, REGISTRATION No. 1086 REGISTERED PROFESSIONAL LAND SURVEYOR STATE OF OREGON, HEREBY CERTIFY THAT THIS MAP CORRECTLY REPRESENTS A SURVEY MADE BY ME OR UNDER MY DIRECTION IN CONFORMANCE WITH THE LAWS OF THE STATE OF OREGON.

LEGEND

- SET  $5/8$ " BY 30" REBAR WITH 2" ALUM. CAP
- ⊙ FOUND GENERAL LAND OFFICE SURVEY MONUMENT
- ⊖ FOUND JACKSON COUNTY MONUMENT
- ⊙ FOUND MONUMENT SET SURVEY # 6455
- ⊙ FOUND MONUMENT SET SURVEY # 9434
- FOUND MONUMENT SET SURVEY #13128
- LINES MARKED AND POSTED THIS SURVEY
- RS SURVEY #6455
- RS1 SURVEY #13128
- RS2 SURVEY #9350
- RS3 SURVEY #9434



SCALE

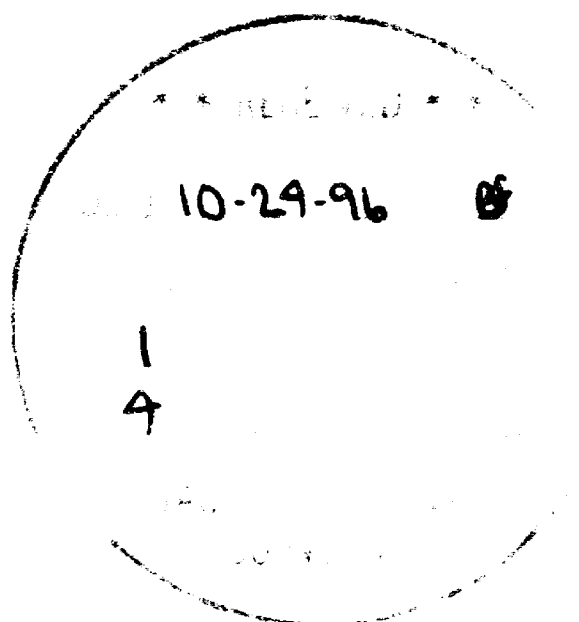
1" = 600'

BASIS OF BEARING

SURVEY #9350  
NORTH ONE HALF WEST LINE

DATE

OCTOBER 22, 1996

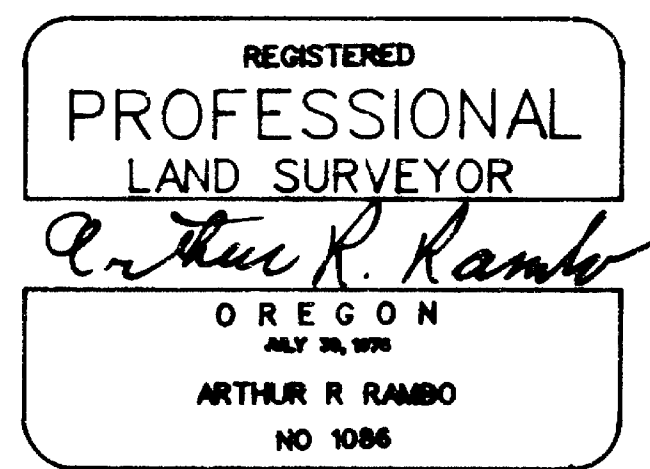


SURVEY FOR

MEDITE CORPORATION  
PO BOX 550  
MEDFORD, OREGON  
97501

SURVEY BY

ARTHUR R. RAMBO  
735 VISTA PARK DRIVE  
EAGLE POINT, OREGON  
97524



REGISTRATION EXPIRES 31 DEC. 1996

NORTH WEST ONE-SIXTEENTH CORNER SECTION 12, TOWNSHIP 38 SOUTH, RANGE 1 EAST. AT THE CORNER LOCATION I SET A 5/8 BY 30 INCH IRON PIN WITH AN ALUMINUM CAP EXPOSED 10 INCHES IN A MOUND OF STONE, MARKED:

T38S R1E  
S12  
NW 1/16  
LS1086

FROM WHICH:

A 9.9 INCH DIAMETER MADRONA BEARS S79°02'56"W, 13.6 FEET WITH NW1/16S12 SCRIBED IN THE UPPER FACE, BT IN THE LOWER FACE.

A 10.6 INCH DIAMETER MADRONA BEARS N48°26'57"E, 11.9 FEET WITH NW1/16S12 SCRIBED IN THE UPPER FACE, BT IN THE LOWER FACE.

REGISTERED  
PROFESSIONAL  
LAND SURVEYOR

*Arthur R. Rambo*

OREGON  
JULY 30, 1976  
ARTHUR R. RAMBO  
No 1086

\*\* RECEIVED \*\*  
Date 10-24-96 By BF  
This survey Consists of:  
1 sheet(s) Map  
4 page(s) Narrative  
JACKSON COUNTY  
SURVEYOR

REGISTRATION EXPIRES 31 DECEMBER 1996

CENTER SOUTH ONE-SIXTEENTH CORNER SECTION 12, TOWNSHIP 38 SOUTH, RANGE 1 EAST. AT THE CORNER LOCATION I FOUND A 2 1/2 INCH BRASS CAP EXPOSED 6 INCHES, MARKED:

LS688  
CS1/16

S12  
1982

CORNERS SET THIS SURVEY

ALL MEASUREMENTS TO BEARING TREES ARE TO THE CENTER OF TREE AT THE BASE UNLESS OTHERWISE STATED. ALL BEARING TREES HAVE A BRASS WASHER STAMPED LS 1086 ATTACHED TO LOWER FACE.

NORTH ONE-SIXTEENTH CORNER COMMON TO SECTIONS 11 AND 12, TOWNSHIP 38 SOUTH, RANGE 1 EAST. AT THE CORNER LOCATION I SET A 5/8 BY 30 INCH IRON PIN WITH AN ALUMINUM CAP EXPOSED 8 INCHES, MARKED:

T38S R1E  
N1/16  
S11 S12  
LS1086

FROM WHICH:

A 10.5 INCH DIAMETER FIR BEARS N55°51'50"E, 5.7 FEET WITH N1/16S12 SCRIBED IN THE UPPER FACE, BT IN THE LOWER FACE.

A 7.2 INCH DIAMETER FIR BEARS N17°14'38"W, 12.1 FEET WITH N1/16S11 SCRIBED IN THE UPPER FACE, BT IN THE LOWER FACE.

SOUTH WEST ONE-SIXTEENTH CORNER SECTION 12, TOWNSHIP 38 SOUTH, RANGE 1 EAST. AT THE CORNER LOCATION I SET A 5/8 BY 30 INCH IRON PIN WITH AN ALUMINUM CAP EXPOSED 8 INCHES IN A MOUND OF STONE, MARKED:

T38S R1E  
SW1/16 . S12  
LS1086

FROM WHICH:

A 9.2 INCH DIAMETER FIR BEARS S87°30'33"W, 23.6 FEET WITH SW1/16S12 SCRIBED IN THE UPPER FACE, BT IN THE LOWER FACE.

A 11.5 INCH DIAMETER FIR BEARS N74°19'31"W, 18.5 FEET WITH SW1/16S12 SCRIBED IN THE UPPER FACE, BT IN THE LOWER FACE.

CENTER WEST ONE-SIXTEENTH CORNER SECTION 12, TOWNSHIP 38 SOUTH, RANGE 1 EAST. AT THE CORNER LOCATION I SET A 5/8 BY 30 INCH IRON PIN WITH AN ALUMINUM CAP EXPOSED 13 INCHES IN A MOUND OF STONE, MARKED:

T38S R1E  
S12  
CW . 1/16  
LS1086

FROM WHICH:

A 10.8 INCH DIAMETER MADRONA BEARS N55°49'17"W, 12.8 FEET WITH CW1/16S12 SCRIBED IN THE UPPER FACE, BT IN THE LOWER FACE.

A 9.2 INCH DIAMETER MADRONA BEARS S61°02'37"E, 38.0 FEET WITH CW1/16S12 SCRIBED IN THE UPPER FACE, BT IN THE LOWER FACE.

ONE-QUARTER CORNER COMMON TO SECTIONS 11 AND 12, TOWNSHIP 38 SOUTH, RANGE 1 EAST. AT THE CORNER LOCATION I FOUND A JACKSON COUNTY CAP EXPOSED 10 INCHES, MARKED:

T38S R1E  
1/4S  
11 12  
JACKSON COUNTY

SOUTH ONE-SIXTEENTH CORNER COMMON TO SECTIONS 11 AND 12, TOWNSHIP 38 SOUTH, RANGE 1 EAST. AT THE CORNER LOCATION I FOUND A YELLOW PLASTIC CAP ON A REBAR EXPOSED 3 INCHES IN A MOUND OF STONE, MARKED:

FRIAR  
.  
PLS961

SECTION CORNER COMMON TO SECTIONS 11, 12, 14, AND 13, TOWNSHIP 38 SOUTH, RANGE 1 EAST. AT THE CORNER LOCATION I FOUND A JACKSON COUNTY CAP EXPOSED 5 INCHES IN A MOUND OF STONE, MARKED:

T38S R1E  
S11 S12  
S14 S13  
JACKSON COUNTY 1974

ONE-QUARTER CORNER COMMON TO SECTIONS 12 AND 13, TOWNSHIP 38 SOUTH, RANGE 1 EAST. AT THE CORNER LOCATION I FOUND A YELLOW PLASTIC CAP FLUSH WITH GROUND LEVEL, MARKED:

FRIAR  
.  
PLS961

WEST ONE-SIXTEENTH CORNER COMMON TO SECTIONS 1 AND 12, TOWNSHIP 38 SOUTH, RANGE 1 EAST. AT THE CORNER LOCATION I FOUND A YELLOW PLASTIC CAP ON A REBAR EXPOSED 1 INCH IN A MOUND OF STONE, MARKED:

BURRELL  
.  
PLS638

ONE-QUARTER CORNER COMMON TO SECTIONS 1 AND 12, TOWNSHIP 38 SOUTH, RANGE 1 EAST. AT THE CORNER LOCATION I FOUND A 2 1/2 INCH BRASS CAP EXPOSED 12 INCHES, MARKED:

LS688  
S1  
1/4 S12  
1982

WEST ONE-SIXTEENTH CORNER COMMON TO SECTIONS 12 AND 13, TOWNSHIP 38 SOUTH, RANGE 1 EAST. AT THE CORNER LOCATION I FOUND A YELLOW PLASTIC CAP FLUSH WITH GROUND LEVEL, MARKED:

FRIAR  
.  
PLS961

ONE-QUARTER CORNER COMMON TO SECTION 12, TOWNSHIP 38 SOUTH, RANGE 1 EAST AND SECTION 7, TOWNSHIP 38 SOUTH, RANGE 2 EAST. AT THE CORNER LOCATION I FOUND A 3 1/2 INCH U.S. GENERAL LAND SURVEY BRASS CAP CEMENTED IN A LARGE ROCK, MARKED:

US GENERAL LAND SURVEY  
T38S  
1/4  
R1E R2E  
S12 S7  
1974

## SURVEY NARRATIVE TO COMPLY WITH O.R.S. 209.250

**LOCATION:** WEST ONE HALF OF SECTION 12, TOWNSHIP 38 SOUTH, RANGE 1 EAST, WILLAMETTE MERIDIAN, JACKSON COUNTY, OREGON.

**SURVEY FOR:** MEDITE CORPORATION  
P.O. BOX 550  
MEDFORD, OREGON 97501

**SURVEY BY:** ARTHUR R. RAMBO LS1086  
735 VISTA PARK DRIVE  
EAGLE POINT, OREGON 97524

**DATE:** OCTOBER 22, 1996

**BASIS OF BEARING:** THE NORTH HALF OF THE WEST LINE SECTION 12, TOWNSHIP 38 SOUTH, RANGE 1 EAST. SURVEY #9434

**PURPOSE:** TO MARK AND POST THE BOUNDARIES OF MEDITE CORPORATION LAND IN THE WEST ONE HALF OF SECTION 12, TOWNSHIP 38 SOUTH, RANGE 1 EAST, AS SHOWN ON THE PLAT TO ACCOMPANY THIS NARRATIVE.

**PROCEDURE:** A SEARCH OF RECORDS REVEALED THAT ALL EXTERIOR CORNERS OF SAID SECTION 12 NEEDED FOR THIS SURVEY HAD BEEN RE-ESTABLISHED FROM ORIGINAL EVIDENCE OR BY PROPORTIONATE MEASUREMENT.

I RAN A TRAVERSE TYING TO CORNERS NEEDED FOR CONTROL TO SUBDIVIDE SAID SECTION 12. I THEN CALCULATED POSITIONS OF INTERIOR CORNERS NEEDED. I RAN A CLOSED TRAVERSE BEGINNING AT THE SOUTH ONE-SIXTEENTH CORNER COMMON TO SECTIONS 11 AND 12 THEN EAST TO THE SOUTH WEST ONE-SIXTEENTH CORNER SECTION 12 THEN NORTH TO THE CENTER WEST ONE-SIXTEENTH CORNER SECTION 12 THEN NORTH TO THE NORTH WEST ONE-SIXTEENTH CORNER SECTION 12 THEN WEST TO THE NORTH ONE-SIXTEENTH CORNER COMMON TO SECTIONS 11 AND 12 TYING TO THE EXTERIOR LINE.

I SET MONUMENTS AND MARKED LINES AS SHOWN ON THE PLAT TO ACCOMPANY THIS NARRATIVE.

CORNERS FOUND AND ACCEPTED FOR CONTROL

SECTION CORNER COMMON TO SECTIONS 2, 1, 12 AND 11, TOWNSHIP 38 SOUTH, RANGE 1 EAST. AT THE CORNER LOCATION I FOUND A JACKSON COUNTY CAP EXPOSED 4 INCHES, MARKED:

T38S R1E  
S2 S1  
S12 S11  
JACKSON COUNTY 1974