

AGATE SUBDIVISION EXTENSION NO. 4
 BEING PORTIONS OF LOTS 171, 172, 173, 179, 180, 181, 184, 185, 186,
 190, 189, & 191 OF ROGUELANDS IRRIGATED ORCHARD TRACTS
 LOCATED IN SEC. 15 & 22 T. 36 S., R. 1 W., W. M.

DEDICATION

KNOW ALL MEN BY THESE PRESENTS THAT WE CLAUD HOOVER, DORIS HOOVER, C.C. HOOVER, ELSIE HOOVER, MELVIN F. HOOVER AND ROSALIND HOOVER ARE THE OWNERS IN FEE SIMPLE OF THE LANDS HEREON DESCRIBED AND THAT WE HAVE SUBDIVIDED THE SAME INTO LOTS, BLOCKS AND STREETS AS SHOWN HEREON, AND THE NUMBER AND SIZE OF THE LOTS AND THE LENGTH OF ALL LINES ARE PLAINLY SET FORTH, AND THAT THIS PLAT IS A CORRECT REPRESENTATION OF THE SAID SUBDIVISION, AND WE DO HEREBY DEDICATE TO THE PUBLIC FOR PUBLIC USE ALL STREETS, AS SHOWN HEREON, AND WE DO HEREBY DESIGNATE SAID SUBDIVISION AS AGATE SUBDIVISION EXTENSION NO. 4.

IN WITNESS WHEREOF WE HAVE SET OUR HANDS AND SEALS THIS 30 DAY OF JULY 1960.

Melvin F. Hoover Claud Hoover
Rosalind Hoover Doris Hoover
Doris Hoover Elsie Hoover

STATE OF OREGON)
 COUNTY OF JACKSON)

July 30, AD. 1960

PERSONALLY APPEARED THE ABOVE NAMED ELSE HOOVER, CLAUD HOOVER, DORIS HOOVER, C.C. HOOVER, MELVIN HOOVER & ROSALIND HOOVER, AND ACKNOWLEDGED THE FOREGOING INSTRUMENT TO BE THEIR VOLUNTARY ACT AND DEED, BEFORE ME.

Raymond A. Beard
 Notary Public for Oregon

MY COMMISSION EXPIRES THE 17th DAY OF May 1963

EXAMINED AND APPROVED BY THE JACKSON COUNTY PLANNING COMMISSION IN REGULAR SESSION THIS 20th DAY OF August 1960

ATTEST: Robert A. Boyer Secretary Clayton President

EXAMINED AND APPROVED BY THE ROGUE RIVER VALLEY IRRIGATION DISTRICT IN REGULAR SESSION THIS 5 DAY OF July 1960

ATTEST: Herald W. Lupton Secretary Otto Bohnerk President

EXAMINED AND APPROVED THIS 4th DAY OF August 1960

Ray Schumacher
 County Assessor

ALL TAXES PAID IN FULL TO DATE THIS 5th DAY OF August 1960

Joseph D. Walsh
 County Sheriff

EXAMINED AND RECOMMENDED FOR APPROVAL BY THE COUNTY COURT THIS THE 27th DAY OF August 1960

Paul B. Lynning
 County Surveyor

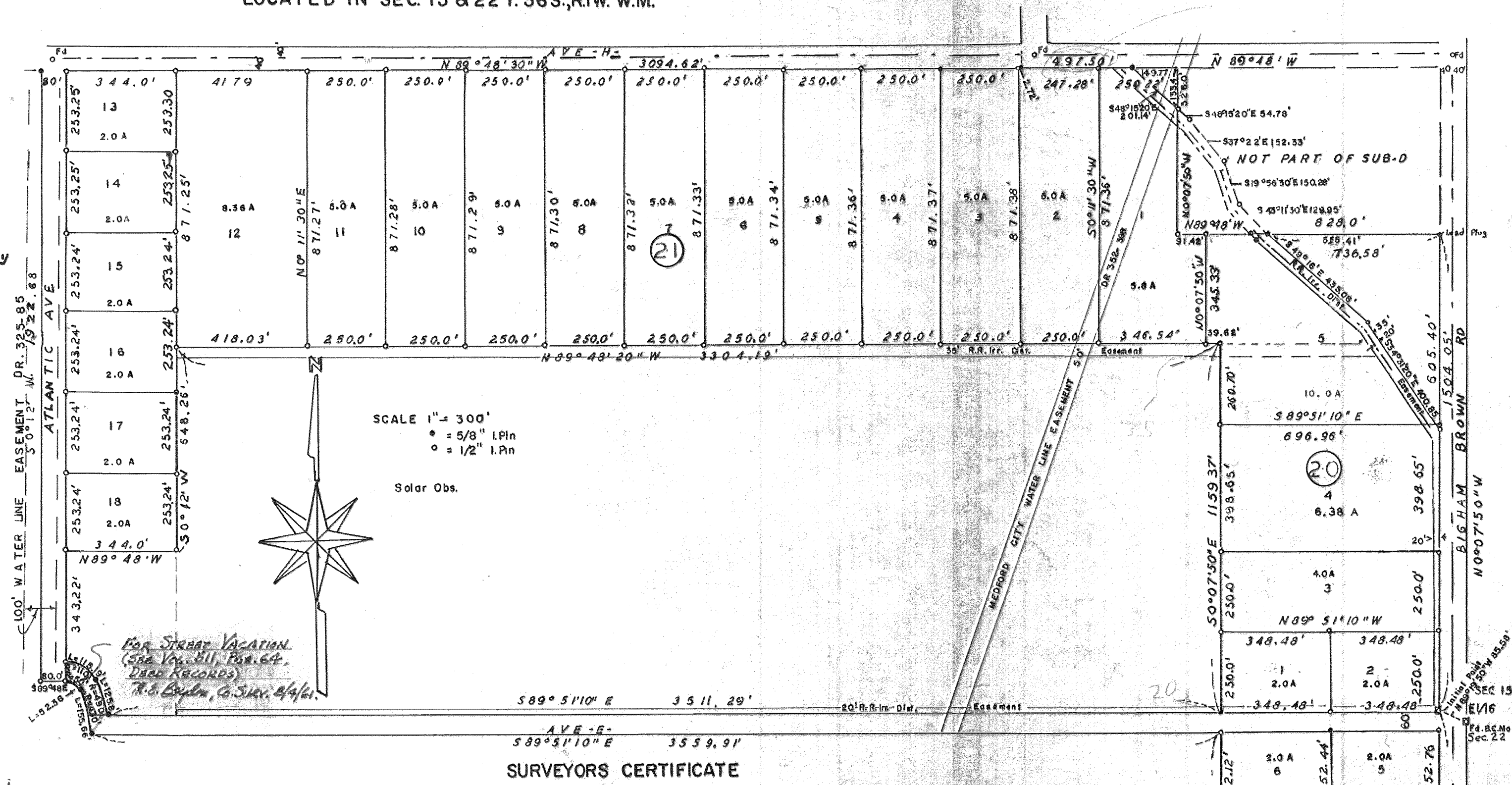
FOR ORDER OF THE COUNTY COURT APPROVING THIS PLAT SEE VOLUME 52, PAGE 625, OF COUNTY COMMISSIONERS JOURNAL OF PROCEEDINGS.

Em. Madch
 County Clerk

496736

FILES FOR RECORD THIS THE 1st DAY OF September 1960 AT 11:25 O'CLOCK A.M. AND RECORDED IN VOLUME 8 OF PLATS AT PAGE 40 OF RECORDS OF JACKSON COUNTY.

Em. Madch
 County Clerk



STATE OF OREGON)
 COUNTY OF JACKSON)

I, EDWARD A. MCGINTY A DULY REGISTERED SURVEYOR OF STATE OF OREGON, BEING FIRST DULY SWORN DO HEREBY CERTIFY THAT I HAVE CORRECTLY SURVEYED AND MARKED WITH THE PROPER MONUMENTS AS PROVIDED BY LAW THE TRACT OF LAND HEREON SHOWN AND THE SAID PLAT IS A CORRECT REPRESENTATION OF THE SAME, AND THE FOLLOWING IS AN ACCURATE DESCRIPTION OF THE BOUNDARY LINES: COMMENCING AT THE E. 1/16 CORNER BETWEEN SECTIONS 15 & 22, T. 36 S., R. 1 W., W. M., JACKSON COUNTY, OREGON; THENCE N. 69° 51' 50" W., 85.58 FEET TO THE INITIAL POINT BEING A CONCRETE MONUMENT WITH A BRONZE DISC; THENCE N. 0° 07' 50" W., 1504.05 FEET; THENCE N. 89° 48' W., 828 FEET; THENCE N. 0° 07' 50" W., 526 FEET TO A POINT ON THE SOUTHERLY LINE OF THE COUNTY ROAD; THENCE N. 89° 48' W., 497.50 FEET; THENCE N. 89° 48' 30" W., 3094.62 FEET; THENCE S. 0° 12' W., 1922.68 FEET; THENCE S. 89° 48' E., 80 FEET TO A POINT OF CURVE HAVING A RADIUS OF 50 FEET; THENCE SOUTHEASTERLY ON AN ARC (LONG CHORD BEARS S. 19° 25' 45" E., 154.82 FEET) TO A POINT OF A CURVE HAVING A RADIUS OF 430 FEET; THENCE SOUTHERLY ON AN ARC (LONG CHORD BEARS S. 19° 25' 45" E., 154.82 FEET) 155.66 FEET; THENCE S. 89° 51' 10" E., 3559.91 FEET; THENCE S. 0° 07' 50" E., 1252.12 FEET TO THE NORTH LINE OF AGATE SUBDIVISION EXTENSION NO. 3; THENCE S. 89° 48' E., 696.96 FEET; THENCE N. 0° 07' 50" W., 1312.76 FEET TO THE POINT OF BEGINNING.

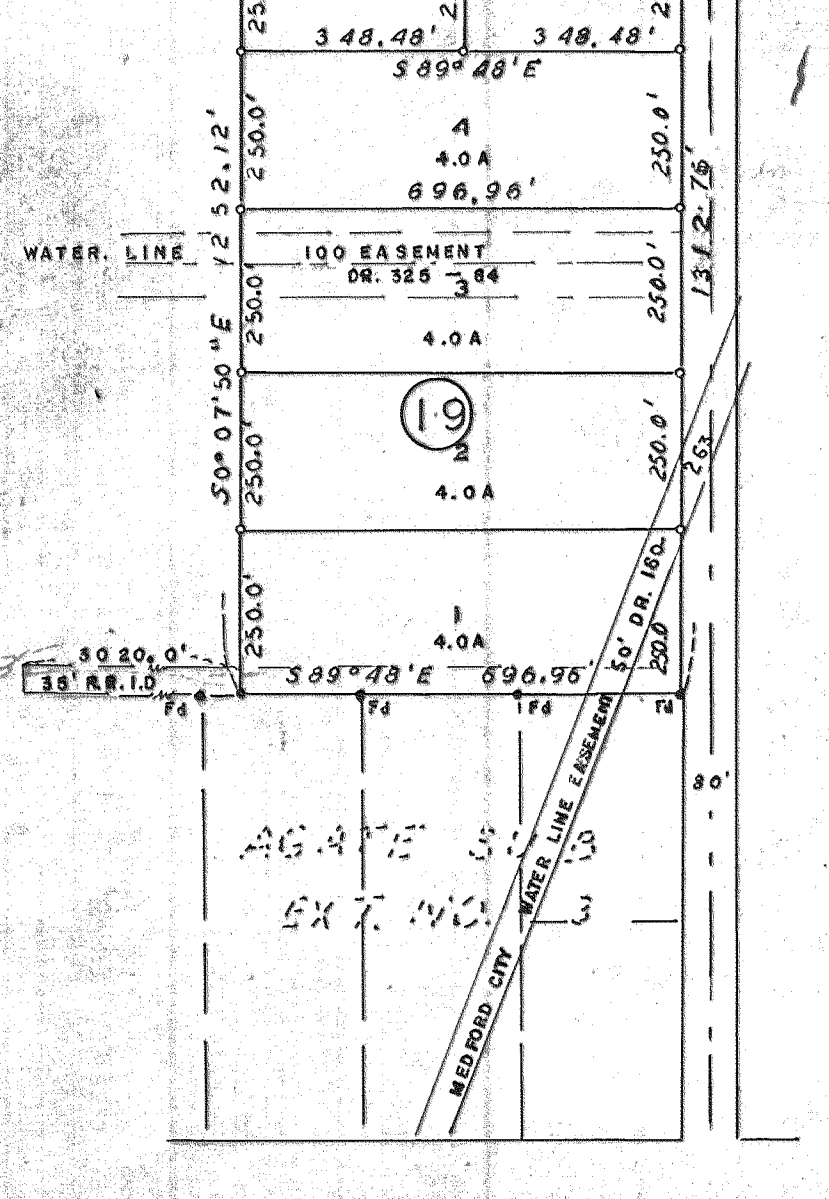
EXCEPT THEREFROM; COMMENCING AT THE SOUTHWEST CORNER OF LOT 1, BLOCK 20 OF THIS SUBDIVISION AS SHOWN; THENCE N. 0° 07' 50" W., 1159.37 FEET; THENCE N. 89° 48' 20" W., 3304.19 FEET; THENCE S. 0° 12' W., 648.26 FEET; THENCE N. 89° 48' W., 344 FEET; THENCE S. 0° 12' W., 343.22 FEET TO A POINT OF CURVE HAVING A RADIUS OF 110 FEET; THENCE SOUTHEASTERLY ON AN ARC (LONG CHORD BEARS S. 58° 48' E., 110 FEET) 115.19 FEET TO A POINT OF CURVE HAVING A RADIUS OF 490 FEET; THENCE SOUTHERLY ON AN ARC (LONG CHORD BEARS S. 22° 26' 40" E., 125.45 FEET) 125.80 FEET; THENCE S. 89° 51' 10" E., 3511.29 FEET TO THE POINT OF BEGINNING.

I HEREBY CERTIFY THAT THIS TRACING IS AN EXACT COPY OF THE ORIGINAL PLAT FILED WITH THE COUNTY CLERK.

SUBSCRIBED AND SWORN TO BEFORE ME THIS 29th DAY OF July 1960.
Raymond A. Beard
 NOTARY PUBLIC FOR OREGON
 MY COMMISSION EXPIRES THE 25th DAY OF August 1962.

I HEREBY CERTIFY THAT THIS TRACING IS AN EXACT COPY OF THE ORIGINAL PLAT FILED WITH THE COUNTY CLERK.

Edward A. McGinty
 SURVEYOR



SUBJECT: Agate Sub-division Extension No. 4.

Compliance with Jackson County Sub-division Ordinance 5.2.3.

The south line of Blk. 19 of this sub-division was determined from monuments found along the north line of Blk. 18, Lots 9, 10 and 11 of Agate Extension No. 3, of record, as shown.

Bigham Brown Road was determined along a portion of the north line and along the east line of the sub-division from monuments found, as shown, which is in close agreement to records indicated in survey by County Engineers office.

The balance of Avenue H was determined from deed records and previous description made by me, finding monuments as shown.

The west and south line of Blk. 21, the west line of 19 & 20 was determined by segregation of this sub-division from a larger tract of the same ownership.

