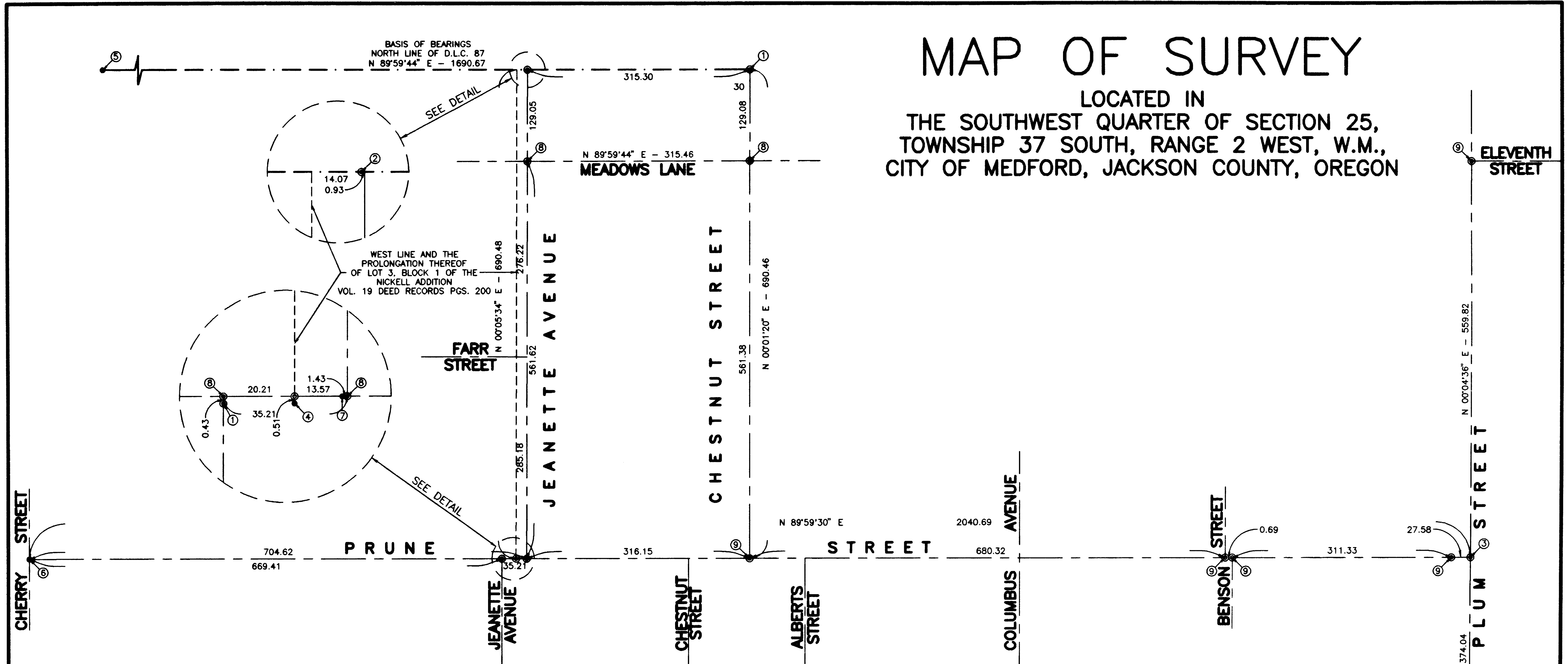


# MAP OF SURVEY

LOCATED IN  
THE SOUTHWEST QUARTER OF SECTION 25,  
TOWNSHIP 37 SOUTH, RANGE 2 WEST, W.M.,  
CITY OF MEDFORD, JACKSON COUNTY, OREGON



## LEGEND

- ① FOUND BRASS DISC SET IN CONCRETE IN MONUMENT CASE
- ② FOUND BRASS DISC SET IN CONCRETE
- ③ FOUND COPPER RIVET IN STONE IN MONUMENT CASE, RESET 2-1/2" DISC WITH 2" IRON PIPE IN CONCRETE IN MONUMENT CASE STAMPED "CITY OF MEDFORD SURVEYOR"
- ④ FOUND COPPER RIVET IN STONE
- ⑤ FOUND 1-1/2" PIPE N.W. CORNER OF D.L.C. 87
- ⑥ FOUND 5/8" REBAR WITH PLASTIC CAP (ILLEGIBLE)
- ⑦ FOUND RAILROAD SPIKE
- ⑧ SET 2-1/2" DISC WITH 2" IRON PIPE IN CONCRETE IN MONUMENT CASE STAMPED "CITY OF MEDFORD SURVEYOR"
- ⑨ FOUND BRASS DISC SET IN CONCRETE IN MONUMENT CASE, RESET 2-1/2" DISC WITH 2" IRON PIPE IN CONCRETE IN MONUMENT CASE STAMPED "CITY OF MEDFORD SURVEYOR"
- FOUND MONUMENT AS NOTED
- FOUND MONUMENT AS NOTED IN MONUMENT CASE
- SET MONUMENT AS NOTED IN MONUMENT CASE

## BASIS OF BEARINGS

THE NORTH LINE OF D.L.C. 87 SHOWN AS N 89°59'44" E ON THAT MINOR LAND PARTITION FILED AS SURVEY NUMBER 8090

## NARRATIVE TO COMPLY WITH O.R.S. 209.250

FOR: CITY OF MEDFORD  
411 WEST EIGHTH STREET  
MEDFORD, OR 97501

SURVEY BY: CITY OF MEDFORD  
LAND SURVEY DIVISION  
411 WEST EIGHTH STREET  
MEDFORD, OR 97501

DATE: FEBRUARY 1994

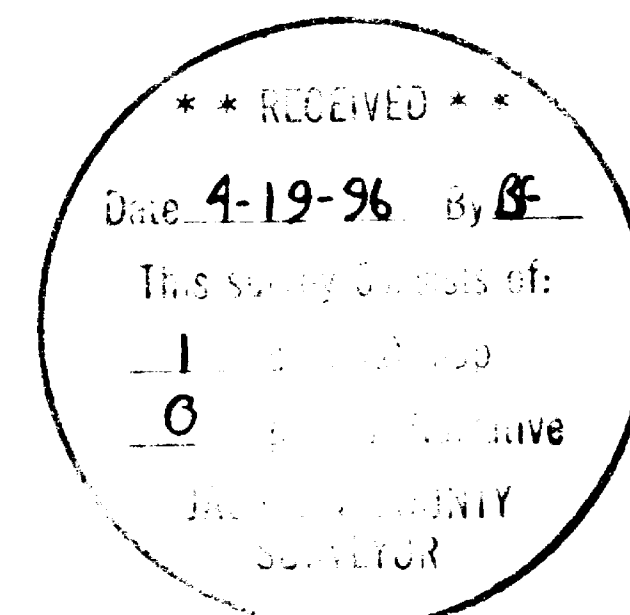
PURPOSE: 1.) TO SET CENTERLINE MONUMENTATION ALONG MEADOWS LANE BETWEEN JEANETTE AVENUE AND CHESTNUT STREET DUE TO STREET IMPROVEMENTS. TO SET MONUMENTATION AT THE INTERSECTION OF PRUNE STREET AND JEANETTE AVENUE DUE TO RESURFACING OF STREET AND FOR FUTURE CONTROL.  
2.) TO PERPETUATE EXISTING CENTERLINE MONUMENTATION ALONG PRUNE STREET BETWEEN CHERRY STREET AND PLUM STREET AND PLUM STREET BETWEEN WITHINGTON STREET AND ELEVENTH STREET DUE TO RESURFACING OF STREETS.

PROCEDURE: 1.) EXISTING MONUMENTATION WAS FOUND AND ANALYZED TO DETERMINE CENTERLINE OF MEADOWS LANE AND THE INTERSECTION OF PRUNE STREET AND JEANETTE AVENUE. FIELD DATA CLOSELY RESEMBLED MONUMENTATION SHOWN ON SURVEY NUMBER 8090.  
2.) EXISTING MONUMENTATION WAS REFERENCED AND NEW MONUMENTATION WAS RESET.

EQUIPMENT: WILD T-1000 TOTAL STATION



EXPIRATION DATE  
12/31/96



DAKOTA AVENUE