

MAP OF SURVEY

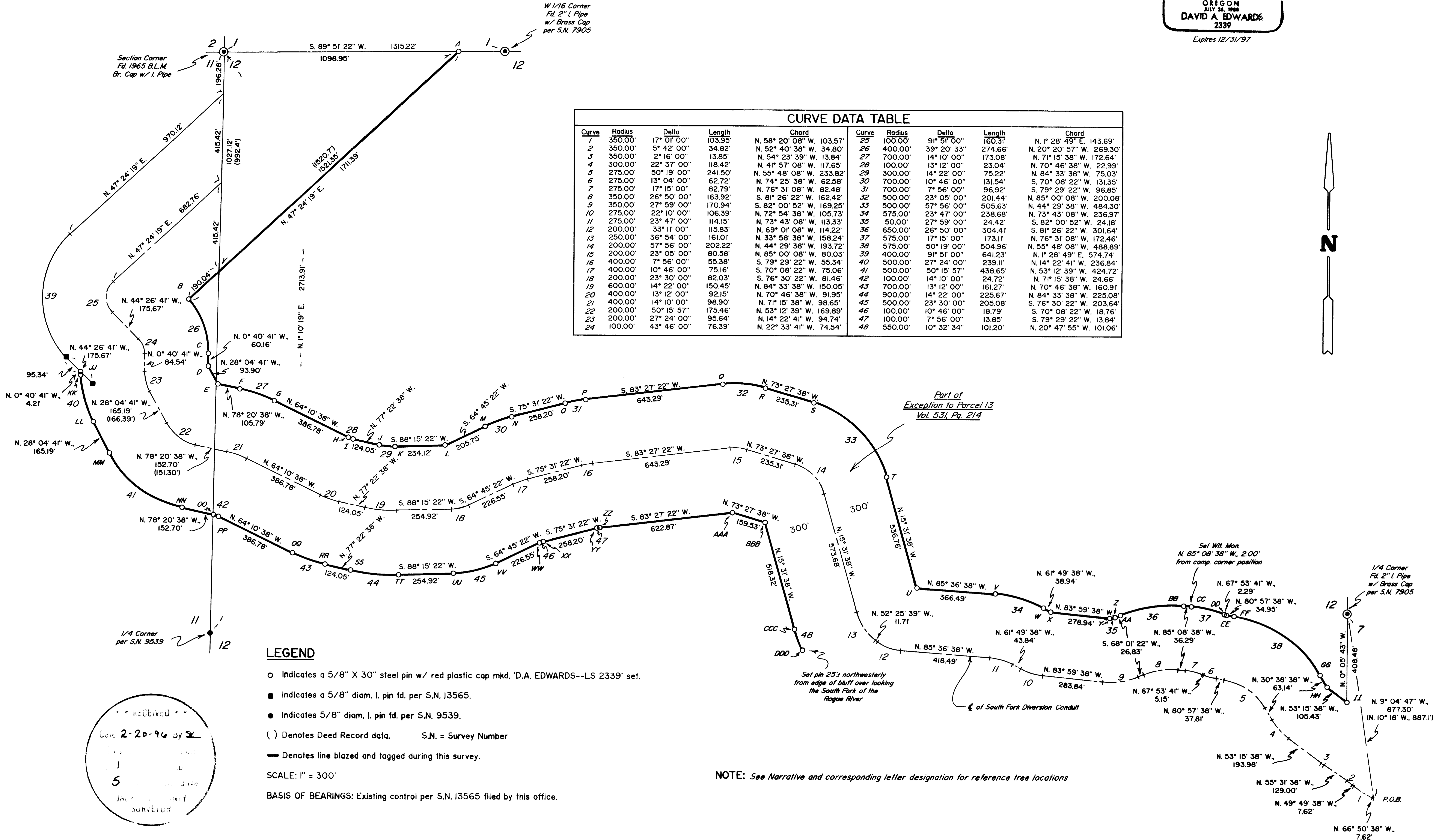
LOCATED in Section 12 & the NE 1/4 of Section 11,
T. 33 S., R. 3 E., W.M.,
Jackson County, Oregon

SURVEYED FOR: Boise Cascade Timber & Wood Products Group
P.O. Box 100
Medford, Oregon 97501

SURVEYED BY: Edwards Surveying and Land Planning Inc.
816 West 8th Street
Medford, Oregon 97501
Phone: (503) 776-2313

January 26, 1996

REGISTERED
PROFESSIONAL
LAND SURVEYOR
David A. Edwards
OREGON
JULY 24, 1988
DAVID A. EDWARDS
2339
Expires 12/31/97



Curve	Radius	Delta	Length	Chord	Curve	Radius	Delta	Length	Chord
1	350.00'	17° 01' 00"	103.95'	N. 58° 20' 08" W. 103.57'	25	100.00'	91° 51' 00"	160.31'	N. 1° 28' 49" E. 143.69'
2	350.00'	5° 42' 00"	34.82'	N. 52° 40' 38" W. 34.80'	26	400.00'	39° 20' 33"	274.66'	N. 20° 20' 57" W. 269.30'
3	350.00'	2° 16' 00"	13.85'	N. 54° 23' 39" W. 13.84'	27	700.00'	14° 10' 00"	173.08'	N. 71° 15' 38" W. 172.64'
4	300.00'	22° 37' 00"	118.42'	N. 41° 57' 08" W. 117.65'	28	100.00'	13° 12' 00"	23.04'	N. 70° 46' 38" W. 22.99'
5	275.00'	50° 19' 00"	241.50'	N. 55° 48' 08" W. 233.82'	29	300.00'	14° 22' 00"	75.22'	N. 84° 33' 38" W. 75.03'
6	275.00'	13° 04' 00"	62.72'	N. 74° 25' 38" W. 62.58'	30	700.00'	10° 46' 00"	131.54'	S. 70° 08' 22" W. 131.35'
7	275.00'	17° 15' 00"	82.79'	N. 76° 31' 08" W. 82.48'	31	700.00'	7° 56' 00"	96.92'	S. 79° 29' 22" W. 96.85'
8	350.00'	26° 50' 00"	163.92'	S. 8° 26' 22" W. 162.42'	32	500.00'	23° 05' 00"	201.44'	N. 85° 00' 08" W. 200.08'
9	350.00'	27° 59' 00"	170.94'	S. 82° 00' 52" W. 169.25'	33	500.00'	57° 56' 00"	505.63'	N. 44° 29' 38" W. 484.30'
10	275.00'	22° 10' 00"	106.39'	N. 72° 54' 38" W. 105.73'	34	575.00'	23° 47' 00"	238.68'	N. 73° 43' 08" W. 236.97'
11	275.00'	23° 47' 00"	114.15'	N. 73° 43' 08" W. 113.33'	35	50.00'	27° 59' 00"	24.42'	S. 82° 00' 52" W. 24.18'
12	200.00'	33° 11' 00"	115.83'	N. 69° 01' 08" W. 114.22'	36	650.00'	26° 50' 00"	304.41'	S. 81° 26' 22" W. 301.64'
13	250.00'	36° 54' 00"	161.01'	N. 33° 58' 38" W. 158.24'	37	575.00'	17° 15' 00"	173.11'	N. 76° 31' 08" W. 172.46'
14	200.00'	57° 56' 00"	202.22'	N. 44° 29' 38" W. 193.72'	38	575.00'	50° 19' 00"	504.96'	N. 55° 48' 08" W. 488.89'
15	200.00'	23° 05' 00"	80.58'	N. 85° 00' 08" W. 80.03'	39	400.00'	91° 51' 00"	641.23'	N. 1° 28' 49" E. 574.74'
16	400.00'	7° 56' 00"	55.38'	S. 79° 29' 22" W. 55.34'	40	500.00'	27° 24' 00"	239.11'	N. 14° 22' 41" W. 236.84'
17	400.00'	10° 46' 00"	75.16'	S. 70° 08' 22" W. 75.06'	41	500.00'	50° 15' 57"	438.65'	N. 53° 12' 39" W. 424.72'
18	200.00'	23° 30' 00"	82.03'	S. 76° 30' 22" W. 81.46'	42	100.00'	14° 10' 00"	24.72'	N. 71° 15' 38" W. 24.66'
19	600.00'	14° 22' 00"	150.45'	N. 84° 33' 38" W. 150.05'	43	700.00'	13° 12' 00"	161.27'	N. 70° 46' 38" W. 160.91'
20	400.00'	13° 12' 00"	92.15'	N. 70° 46' 38" W. 91.95'	44	900.00'	14° 22' 00"	225.67'	N. 84° 33' 38" W. 225.08'
21	400.00'	14° 10' 00"	98.90'	N. 71° 15' 38" W. 98.65'	45	500.00'	23° 30' 00"	205.08'	S. 76° 30' 22" W. 203.64'
22	200.00'	50° 15' 57"	175.46'	N. 53° 12' 39" W. 169.89'	46	100.00'	10° 46' 00"	18.79'	S. 70° 08' 22" W. 18.76'
23	200.00'	27° 24' 00"	95.64'	N. 14° 22' 41" W. 94.74'	47	100.00'	7° 56' 00"	13.85'	S. 79° 29' 22" W. 13.84'
24	100.00'	43° 46' 00"	76.39'	N. 22° 33' 41" W. 74.54'	48	550.00'	10° 32' 34"	101.20'	N. 20° 47' 55" W. 101.06'

LEGEND

- Indicates a 5/8" X 30" steel pin w/ red plastic cap mkd. 'D.A. EDWARDS--LS 2339' set.
 - Indicates a 5/8" diam. I. pin fd. per S.N. 13565.
 - Indicates 5/8" diam. I. pin fd. per S.N. 9539.
 - () Denotes Deed Record data. S.N. = Survey Number
 - Denotes line blazed and tagged during this survey.
- SCALE: 1" = 300'
- BASIS OF BEARINGS: Existing control per S.N. 13565 filed by this office.

NOTE: See Narrative and corresponding letter designation for reference tree locations

RECEIVED
Date 2-20-96 by SK
1
5
JACKSON COUNTY
SURVEYOR

Edwards Surveying & Land Planning Inc.

816 West 8th Street
Medford, OR 97501
Tel.: (503) 776-2313
FAX: (503) 776-9978



598 NE "E" Street, Suite B
Grants Pass, OR 97526
Tel.: (503) 471-7059
FAX: (503) 471-7809

SURVEYING • ENGINEERING • PLANNING

SURVEY NUMBER 14851

SURVEY NARRATIVE TO COMPLY WITH CHAPTER 209, PARAGRAPH 250,
OREGON REVISED STATUTES

At 'ZZ':
A 14" diam. Fir brs. N. 15° E., 19.1 feet.

At 'AAA':
A 7" diam. Fir brs. N. 14° E., 3.0 feet.

At 'BBB':
A 16" diam. Fir brs. N. 24° E., 14.4 feet.

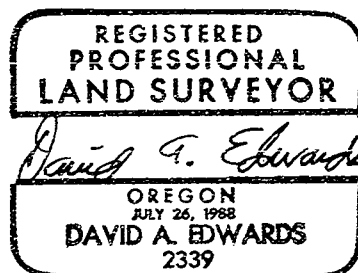
At 'CCC':
A 10" diam. Fir brs. S. 69° E., 23.2 feet.

At 'DDD':
A 12" diam. Fir brs. S. 56° E., 20.3 feet.

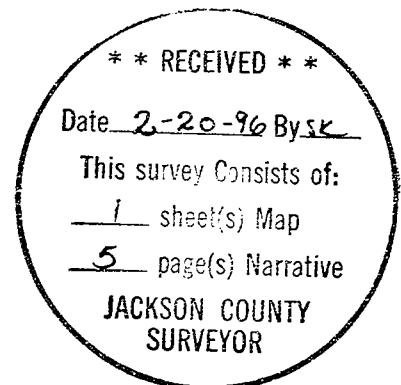
BASIS OF
BEARINGS: Existing control per Survey Number 13565 filed by
this office.

EQUIPMENT: Nikon DTM-A5 Electronic Total Station.

DATE
COMPLETED: January 26, 1996



Expires 12/31/97



NOTE: Mad. = Madrone
Chq. = Chinquapin

Edwards Surveying & Land Planning Inc.

816 West 8th Street
Medford, OR 97501
Tel.: (503) 776-2313
FAX: (503) 776-9978



598 NE "E" Street, Suite B
Grants Pass, OR 97526
Tel.: (503) 471-7059
FAX: (503) 471-7809

SURVEYING • ENGINEERING • PLANNING

SURVEY NUMBER 14851

SURVEY NARRATIVE TO COMPLY WITH CHAPTER 209, PARAGRAPH 250,
OREGON REVISED STATUTES

- At 'JJ':
A 15" diam. Fir brs. S. 81° E., 30.1 feet.
- At 'KK':
A 24" diam. Fir brs. S. 58° E., 26.4 feet.
- At 'LL':
A 33" diam. Fir brs. N. 56° E., 27.5 feet.
- At 'MM':
An 18" diam. Mad. brs. N. 63° E., 19.4 feet.
- At 'NN':
A 16" diam. Mad. brs. N. 3° E., 23.4 feet.
- At 'OO':
A 16" diam. Fir brs. N. 82° E., 7.6 feet.
- At 'PP':
A 13" diam. Fir brs. N. 50° E., 32.6 feet.
- At 'QQ':
An 18" diam. Mad. brs. N 9° W., 13.9 feet.
- At 'RR':
A 15" diam. Mad. brs. N. 13° E., 17.3 feet.
- At 'SS':
A 16" diam. Mad. brs. N. 38° E., 22.9 feet.
- At 'TT':
A 19" diam. Fir brs. N. 7° E., 13.2 feet.
- At 'UU':
A 11" diam. Fir brs. N. 2° W., 7.9 feet.
- At 'VV':
An 18" diam. Fir brs. N. 19° W., 29.2 feet.
- At 'WW':
A 9" diam. Fir brs. N. 20° W., 15.5 feet.
- At 'XX':
A 10" diam. Fir brs. N. 9° E., 9.9 feet.
- At 'YY':
A 6" diam. Cedar brs. N. 43° W., 8.4 feet.

Edwards Surveying & Land Planning Inc.

816 West 8th Street
Medford, OR 97501
Tel.: (503) 776-2313
FAX: (503) 776-9978



598 NE "E" Street, Suite B
Grants Pass, OR 97526
Tel.: (503) 471-7059
FAX: (503) 471-7809

SURVEYING • ENGINEERING • PLANNING

SURVEY NUMBER 14851

SURVEY NARRATIVE TO COMPLY WITH CHAPTER 209, PARAGRAPH 250, OREGON REVISED STATUTES

- At 'T':
A 12" diam. Fir brs. S. 13° W., 7.6 feet.
- At 'U':
A 16" diam. Fir brs. S. 25° E., 9.0 feet.
- At 'V':
A 16" diam. Fir brs. S. 5° E., 16.1 feet.
- At 'W':
A 17" diam. Fir brs. S. 45° W., 26.8 feet.
- At 'X':
A 9" diam. Fir brs. S. 24° E., 10.4 feet.
- At 'Y':
An 8" diam. Fir brs. N. 30° W., 8.1 feet.
- At 'Z':
A 26" diam. Fir brs. S. 47° E., 7.6 feet.
- At 'AA':
A 12" diam. Fir brs. S. 79° E., 16.0 feet.
- At 'BB':
A 10" diam. Fir brs. S. 11° W., 6.7 feet.
- At 'CC' set Wit. Mon.:
A 10" diam. Fir brs. S. 7° W., 3.6 feet.
- At 'DD':
A 12" diam. Chq. brs. S. 48° W., 13.6 feet.
- At 'EE':
A 6" diam. Pine brs. N. 35° E., 4.5 feet.
- At 'FF':
An 18" diam. Fir brs. S. 21° W., 10.5 feet.
- At 'GG':
A 12" diam. Fir brs. S. 69° W., 10.1 feet.
- At 'HH':
A 16" diam. Fir brs. S. 39° W., 26.3 feet.
- At 'II':
An 8" diam. Fir brs. N. 74° W., 9.1 feet.

Edwards Surveying & Land Planning Inc.

816 West 8th Street
Medford, OR 97501
Tel.: (503) 776-2313
FAX: (503) 776-9978



598 NE "E" Street, Suite B
Grants Pass, OR 97526
Tel.: (503) 471-7059
FAX: (503) 471-7809

SURVEYING • ENGINEERING • PLANNING

SURVEY NUMBER 14851

SURVEY NARRATIVE TO COMPLY WITH CHAPTER 209, PARAGRAPH 250,
OREGON REVISED STATUTES

- At 'D':
A 10" diam. Fir brs. S. 28° W., 17.0 feet.
- At 'E':
A 10" diam. Fir brs. S. 30° E., 5.4 feet.
- At 'F':
A 28" diam. Fir brs. S. 1° W., 13.5 feet.
- At 'G':
An 18" diam. Fir brs. S. 17° E., 3.2 feet.
- At 'H':
An 8" diam. Chq. brs. S. 23° E., 6.8 feet.
- At 'I':
A 12" diam. Fir brs. S. 60° E., 8.2 feet.
- At 'J':
A 4" diam. Fir brs. N. 38° E., 3.8 feet.
- At 'K':
An 8" diam. Fir brs. N. 68° E., 3.0 feet.
- At 'L':
A 6" diam. Cedar brs. S. 19° W., 8.6 feet.
- At 'M':
An 8" diam. Fir brs. S. 87° W., 6.8 feet.
- At 'N':
A 6" diam. Fir brs. S. 16° E., 5.1 feet.
- At 'O':
An 8" diam. Cedar brs. S. 65° E., 15.5 feet.
- At 'P':
A 12" diam. Mad. brs. S. 15° E., 8.5 feet.
- At 'Q':
A 12" diam. Fir brs. S. 39° E., 4.8 feet.
- At 'R':
An 8" diam. Fir brs. S. 53° W., 5.7 feet.
- At 'S':
A 6" diam. Fir brs. N. 66° E., 4.2 feet.

Edwards Surveying & Land Planning Inc.

816 West 8th Street
Medford, OR 97501
Tel.: (503) 776-2313
FAX: (503) 776-9978



598 NE "E" Street, Suite B
Grants Pass, OR 97526
Tel.: (503) 471-7059
FAX: (503) 471-7809

SURVEYING • ENGINEERING • PLANNING

SURVEY NUMBER 14851

SURVEY NARRATIVE TO COMPLY WITH CHAPTER 209, PARAGRAPH 250,
OREGON REVISED STATUTES

SURVEY FOR: Boise Cascade Timber and Wood Products Group
P.O. Box 100
Medford, Oregon 97501

LOCATION: In Section 12 and in the Northeast 1/4 of
Section 11, T. 33 S., R. 3 E., W.M.,
Jackson County, Oregon.

PURPOSE: To locate and monument the corners of Boise Cascade
lands in Section 12 and 11, and to blaze trees
marking the boundaries of said lands as shown on
the accompanying map.

PROCEDURE: Utilizing existing control points and data
established by this office during the execution of
Survey Number 13565, as well as additional ties
shown on the accompanying map, computed the
position of the desired boundaries, making use of
Volume 531, Page 214, Deed Records for above said
County and State. The Deed POINT OF BEGINNING
makes a call to the 'Original' 1/4 Corner between
Sections 12 and 7. This corner has since then been
lost and proportioned back in per S.N. 7905;
therefore, the Deed record data was translated and
rotated to provide the most accurate fit to the
center line of the existing canal. The true lines
were then marked and trees were blazed if they were
within 3 feet of the line. Reference trees were
marked 'X BT' on a double blaze and were measured
to the center of the tree at the root crown.
Monuments set on this survey consist of 5/8" x 30"
steel pins with red plastic caps mkd. "D.A. EDWARDS
-LS 2339". The reference trees are situated as
follows:

At 'A':
A 14" diam. Fir brs. N. 67° E., 18.6 feet.
A 19" diam. Fir brs. N. 16° W., 14.1 feet.

At 'R':
An 18" diam. Mad. brs. N. 63° E., 20.75 feet.
A 13" diam. Mad. brs. S. 30° E., 12.0 feet.

At 'C':
A 12" diam. Fir brs. N. 39° W., 16.5 feet.