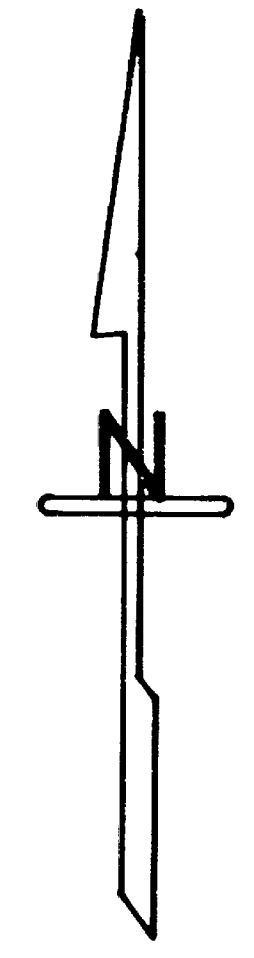
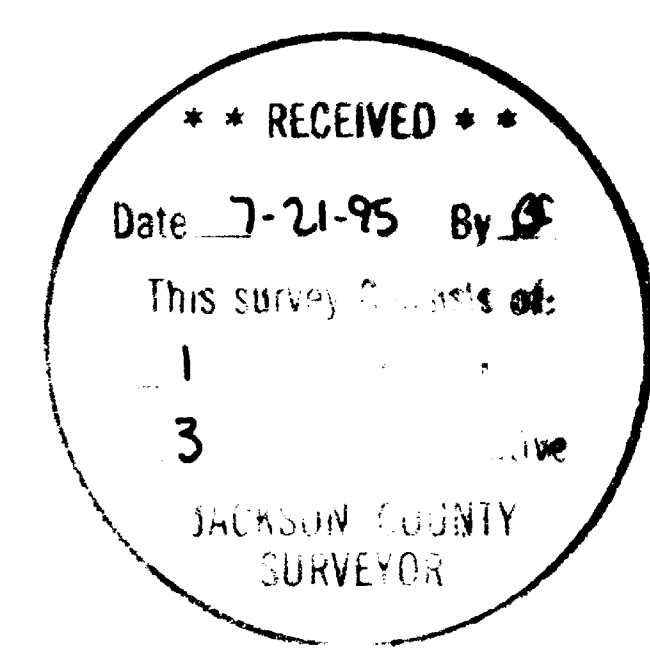
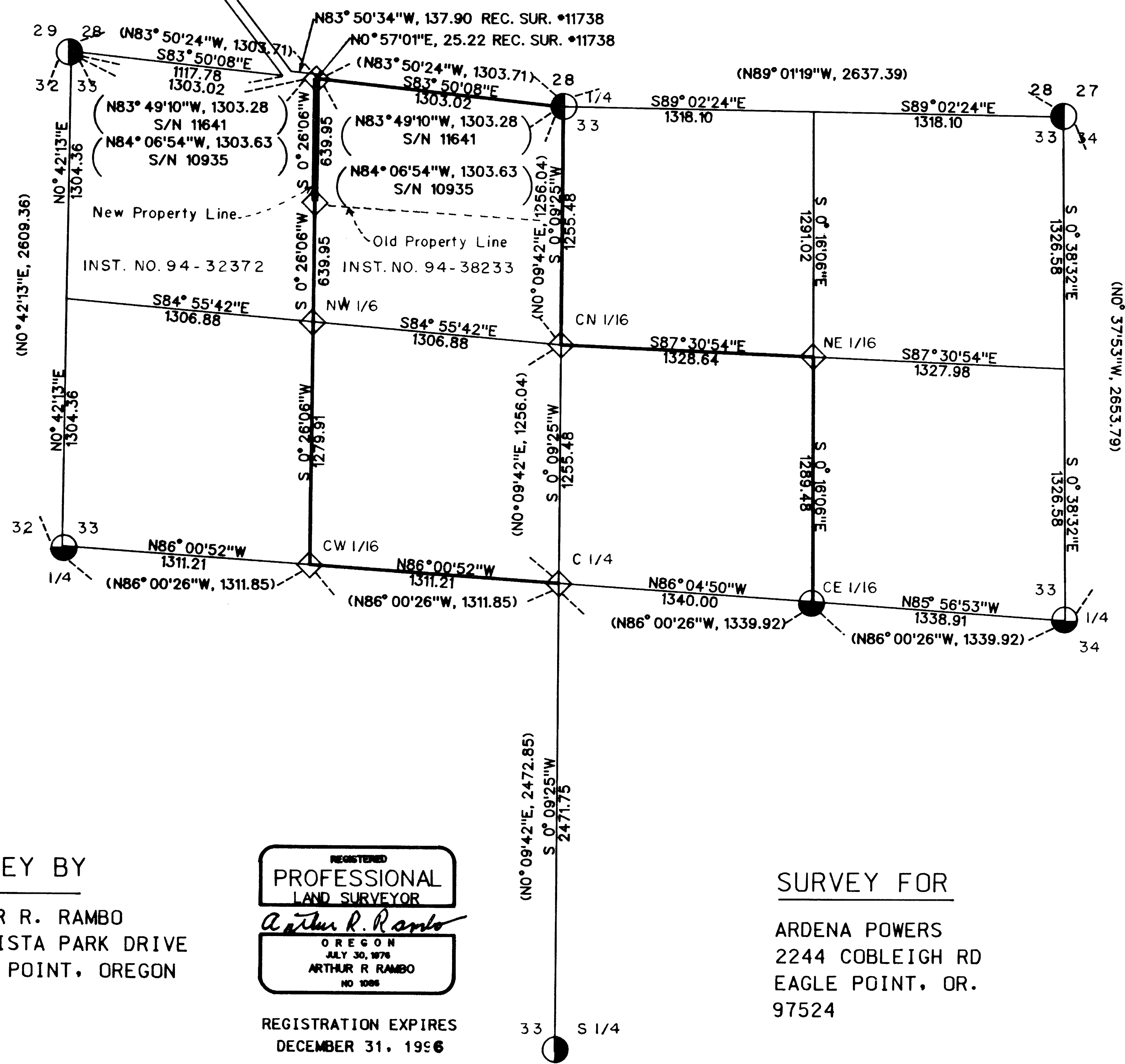
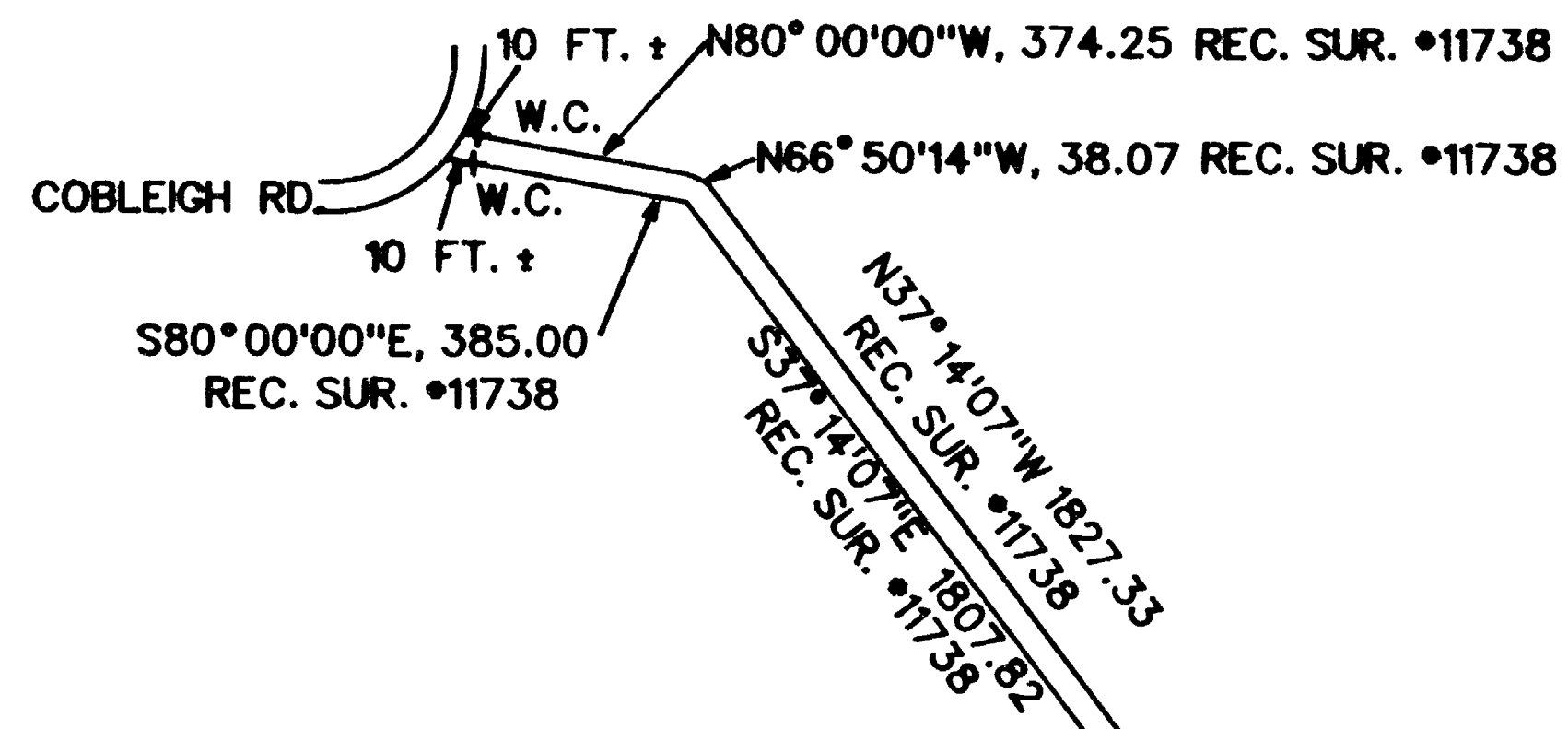


MAP OF SURVEY  
 LOCATED IN  
 N 1/2 S33 T34S R2E W.M.  
 LLA 94-46  
 PROPERTY LINE ADJUSTMENT



LEGEND

- ◇ SET 5/8" BY 30" REBAR WITH 2" ALUM. CAP
- FOUND 1 1/2 INCH ALUM. CAP, SET SURVEY #6458
- FOUND JACKSON COUNTY BRASS CAP ON 1" PIPE
- FOUND BUREAU OF LAND MANAGEMENT BRASS CAP
- ADJUSTED LOT LINE
- LINE MARKED THIS SURVEY
- ( ) DENOTES SURVEY #6458

SCALE

1" = 500'

BASIS OF BEARING

RECORDED SURVEY #6458  
W 1/4 SEC. COR. TO N.W. SEC. COR.

DATE

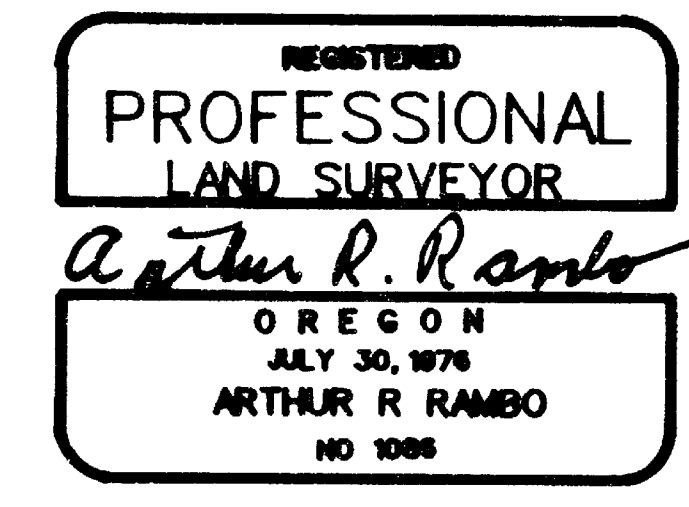
AUGUST 8, 1994

APPROVED BY THE JACKSON COUNTY  
DEPT. OF PLANNING AND DEVELOPEMENT

BY Robin Becker DATE 8-23-94

SURVEY BY

ARTHUR R. RAMBO  
735 VISTA PARK DRIVE  
EAGLE POINT, OREGON  
97524



REGISTRATION EXPIRES  
DECEMBER 31, 1996

SURVEY FOR

ARDENA POWERS  
2244 COBLEIGH RD  
EAGLE POINT, OR.  
97524

14601

CENTER NORTH ONE-SIXTEENTH CORNER. AT THE CORNER  
LOCATION I SET A 5/8" BY 30" IRON PIN WITH 2" DIAMETER  
ALUM. CAP MARKED:

T34S R2E  
S 33  
CN . 1/16  
LS 1086

FROM WHICH:

A 10" DIAMETER OAK BEARS S76°01'E, 32.9 FEET  
MARKED CN 1/16 S33 IN UPPER FACE, BT IN LOWER FACE.  
A 12" DIAMETER OAK BEARS N89°54'W, 22.2 FEET  
MARKED CN 1/16 S33 IN UPPER FACE, BT IN LOWER FACE.

REGISTERED  
PROFESSIONAL  
LAND SURVEYOR

*Arthur R. Rambo*

OREGON  
JULY 30, 1976  
ARTHUR R. RAMBO  
No 1086

EXPIRATION 31 DEC 1996

\*\* RECEIVED \*\*  
Date 7-21-95 By AR  
This survey consists of:  
1 sheet(s) Map  
3 page(s) Narrative  
JACKSON COUNTY  
SURVEYOR

NORTH-NORTHWEST ONE-SIXTYFOURTH CORNER SECTION 33. AT THE CORNER LOCATION I SET A 5/8" BY 30" IRON PIN WITH A 2" DIAMETER ALUM. CAP MARKED:

14601

T34S R2E  
S 33  
NNW . 1/64  
LS 1086

FROM WHICH:

A 9" DIAMETER OAK BEARS S22°55'E, 34.3 FEET MARKED NNW 1/64 S33 IN UPPER FACE, BT IN LOWER FACE.

A 10 1/2 " DIAMETER OAK BEARS N24°44W, 77.6 FEET MARKED NNW 1/64 S33 IN UPPER FACE, BT IN LOWER FACE.

NORTHWEST ONE-SIXTEENTH CORNER SECTION 33. AT THE CORNER LOCATION I SET A 5/8" BY 30" IRON PIN WITH A 2" DIAMETER ALUM. CAP MARKED:

T34S R2E  
S 33  
NW . 1/16  
LS 1086

FROM WHICH:

A 10" DIAMETER CEDAR BEARS S75°43'E, 12.8 FEET MARKED NW 1/16 S33 IN UPPER FACE, BT IN LOWER FACE.

A 7" DIAMETER OAK BEARS S31°18'W, 11.0 FEET MARKED NW 1/16 S33 IN UPPER FACE, BT IN LOWER FACE.

CENTERWEST ONE-SIXTEENTH CORNER SECTION 33. AT THE CORNER LOCATION I SET A 5/8" BY 30" IRON PIN WITH A 2" DIAMETER ALUM. CAP MARKED:

T34S R2E  
S 33  
CW . 1/16  
LS 1086

FROM WHICH:

A 5 1/2" DIAMETER FIR BEARS N67°22'W, 47.1 FEET MARKED CW 1/16 S33 IN UPPER FACE, BT IN LOWER FACE.

A 20" DIAMETER OAK BEARS S15°41'W, 17.6 FEET MARKED CW 1/16 S33 IN UPPER FACE, BT IN LOWER FACE.

CENTER ONE-QUARTER CORNER. AT THE CORNER LOCATION I SET A 5/8" BY 30" IRON PIN WITH 2" DIAMETER ALUM. CAP MARKED:

T34S R2E  
S 33  
C . 1/4  
LS 1086

FROM WHICH:

A 16" DIAMETER UNOPENED FIR BEARS S28°12'W, 9.2 FEET.

A 16" DIAMETER UNOPENED FIR BEARS S74°17'E, 27.7 FEET.

A 14" DIAMETER MADRONA BEARS N60°49'E, 16.5 FEET MARKED C 1/4 S33 IN UPPER FACE, BT IN LOWER FACE.

A 10" DIAMETER MADRONA BEARS N28°06'E, 26.8 FEET MARKED C 1/4 S33 IN UPPER FACE, BT IN LOWER FACE.

NORTHEAST ONE-SIXTEENTH CORNER. AT THE CORNER LOCATION I SET A 5/8" BY 30" IRON PIN WITH 2" DIAMETER ALUM. CAP MARKED:

T34S R2E  
S 33  
NE . 1/16  
LS 1086

FROM WHICH:

AN 8" DIAMETER OAK BEARS S32°06'W, 8.7 FEET MARKED NE 1/16 S33 IN UPPER FACE, BT IN LOWER FACE.

A 10" DIAMETER OAK BEARS S88°56'E, 42.9 FEET MARKED NE 1/16 S33 IN UPPER FACE, BT IN LOWER FACE.

14601

SURVEY NARRATIVE TO COMPLY WITH O.R.S. 209.250

LOCATION: NORTH ONE-HALF OF SECTION 33, TOWNSHIP 34 SOUTH, RANGE 2 EAST, WILLAMETTE MERIDIAN, JACKSON COUNTY, OREGON.

SURVEY FOR: ARDEANA POWERS  
2244 COBLEIGH ROAD  
EAGLE POINT, OREGON 97524

SURVEY BY: ARTHUR R. RAMBO LS 1086  
735 VISTA PARK DRIVE  
EAGLE POINT, OREGON 97524

DATE: AUGUST 8, 1994

BASIS OF BEARING: SURVEY #6458

PURPOSE: BOUNDARY LINE ADJUSTMENT: PLANNING DEPARTMENT FILE NUMBER 94-46-LLA. TO ADJUST THE LOT LINES BETWEEN TAX LOTS 5604 AND 7700. TO SHOW THE ADJUSTMENT LINES FOR SAID LOT LINE ADJUSTMENT (94-46-LLA) FOR JACKSON COUNTY PLANNING DEPARTMENT. TO MARK THE LINES AND SET MONUMENTS AS SHOWN ON THE MAP TO ACCOMPANY THIS NARRATIVE.

PROCEDURE

A SEARCH OF RECORDS REVEALED THAT SAID SECTION 33 HAD BEEN SUBDIVIDED ON SURVEY NUMBER 6458. A SEARCH IN THE FIELD REVEALED THAT THE MONUMENT SET FOR THE CENTER ONE-QUARTER CORNER WAS GONE. ALSO THE MONUMENT AND BEARING TREES FOR THE CENTERWEST ONE-SIXTEENTH WERE GONE DUE TO A MUD SLIDE.

I RAN A CLOSED TRAVERSE SURVEY TYING TO THE EXTERIOR CORNERS OF SAID SECTION 33 NEEDED FOR CONTROL OF THIS SURVEY. I THEN CALCULATED THE SUBDIVISION OF THE SECTION AND SET THE MONUMENTS AND MARKED THE LINES NEEDED AS SHOWN ON THE MAP TO ACCOMPANY THIS NARRATIVE.

CORNERS SET THIS SURVEY

ALL MEASUREMENTS ARE TO THE CENTER OF TREE AT THE BASE UNLESS OTHERWISE STATED. BEARING TREES HAVE A BRASS WASHER MARKED LS 1086 NAILED TO THE LOWER FACE OF TREE.

WEST ONE-SIXTEENTH CORNER COMMON TO SECTION 29 AND 33. AT THE CORNER LOCATION I SET A 5/8" BY 30 " IRON PIN WITH A 2 " DIAMETER ALUM. CAP MARKED:

T34S R2E  
S 29  
W 1/16  
S 33  
LS 1086

FROM WHICH:

A 6" DIAMETER OAK BEARS S66°36'E, 12.8 FEET MARKED W 1/16 S33 IN UPPER FACE, BT IN LOWER FACE.

A 5 1/2" DIAMETER OAK BEARS S71°18'E, 23.1 FEET MARKED W 1/16 S29 IN UPPER FACE, BT IN LOWER FACE.