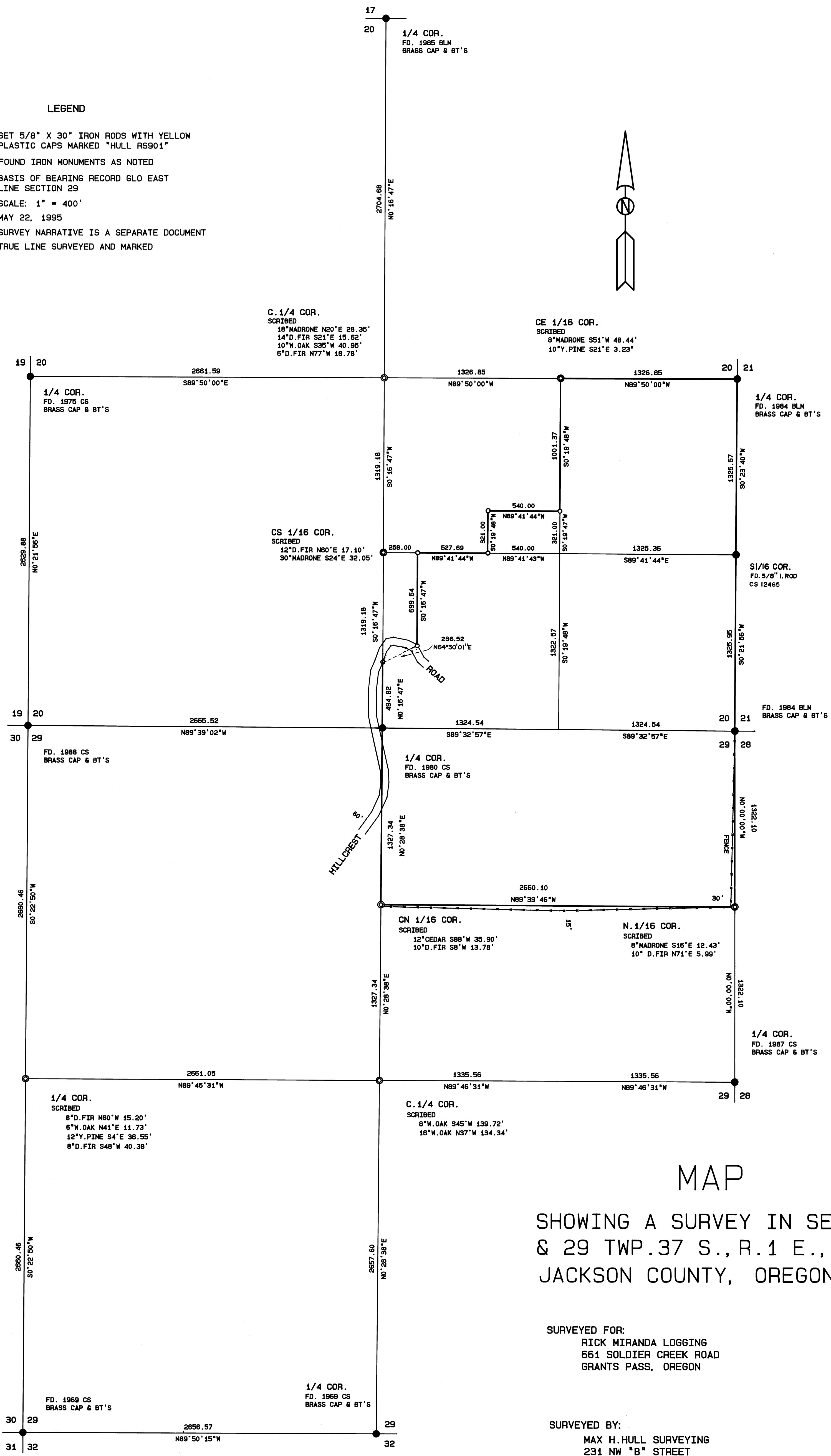


LEGEND

- SET 5/8" X 30" IRON RODS WITH YELLOW PLASTIC CAPS MARKED "HULL RS901"
- FOUND IRON MONUMENTS AS NOTED

BASIS OF BEARING RECORD GLO EAST
LINE SECTION 29
SCALE: 1" = 400'
MAY 22, 1995
SURVEY NARRATIVE IS A SEPARATE DOCUMENT
TRUE LINE SURVEYED AND MARKED



MAP
 SHOWING A SURVEY IN SECTIONS 20
 & 29 TWP. 37 S., R. 1 E., WM.,
 JACKSON COUNTY, OREGON

SURVEYED FOR:
 RICK MIRANDA LOGGING
 661 SOLDIER CREEK ROAD
 GRANTS PASS, OREGON

SURVEYED BY:
 MAX H. HULL SURVEYING
 231 NW "B" STREET
 GRANTS PASS, OREGON

6-16-95
 1
 3

REGISTERED PROFESSIONAL LAND SURVEYOR
 MAX H. HULL



MAX H. HULL Land Surveying

Office 476-2425

231 N. W. 'B' Street Grants Pass, Oregon 97526

14561

SURVEY NARRATIVE to comply with Paragraph 209.250. O.R.S.

DATE: May 22, 1995

FOR: Rick Miranda Logging
661 Soldier Creek Rd
Grants Pass, OR 97526

PURPOSE: To survey and mark the boundaries of property located in Sections 20 and 29. Township 37 South, Range 1 East. of the Willamette Meridian. Jackson County. Oregon.

PROCEDURE: I surveyed a control traverse tieing in the following corners:

East 1/4 corner Section 20: found 1984 BLM brass cap from which I found BTs per CS 2330
A Fir 18" in diam. North 9° East 8.3 feet, blaze healed.
A Fir 18" in diam. South 76° West 29.0 feet, blaze healed.

North 1/4 corner Section 20: found 1985 BLM brass cap from which I found
A Fir 9" in diam. South 2° West 3.3 feet, blaze healed.
A Fir 13" in diam. North 2° West 4.6 feet, blaze healed.

West 1/4 corner Section 20: found 1975 BLM brass cap from which I found
A W.Oak 18" in diam. South 24° East 38.3 feet, blaze healed.
A B.Oak 18" in diam. South 38° East 34.3 feet, blaze healed.
A W.Oak 12" in diam. North 29° West 22.4 feet, blaze healed.

1/4 corner common to Sections 20 and 29: found 1980 CS brass cap from which I found
A Fir 16" in diam. South 41° West 4.4 feet, blaze healed.
A Fir 15" in diam. North 51° 25 feet West 46.9 feet, blaze healed.
A Fir stump 12" in diam. South 47-1/2° East 26.0 feet, blaze healed.

14561

Southeast corner Section 20: found 1984 BLM brass cap from which I found

A Fir 17" in diam. South 70-1/2° East 62.7 feet, blaze healed.

A B.Oak 20" in diam. North 43° West 28.0 feet, blaze healed.

A Fir 15" in diam. North 64° East 60.7 feet, blaze healed.

A Fir 19" in diam. South 13-1/4° West 98.3 feet, blaze healed.

East 1/4 corner Section 29: found a 1987 CS brass cap from which I found

A Fir 16" in diam. snag North 68° East 19.6 feet, scribe visible.

A Fir 15" in diam. South 7° West 33.2 feet, blaze healed.

A Fir 13" in diam. South 58-1/2° East 32.95 feet, blaze healed.

South 1/4 corner Section 29: found a 1969 CS brass cap from which I found

A W.Oak 20" in diam. North 01/2° West 52.8 feet, blaze healed.

A W.Oak 14" in diam. South 79-3/4° West 163.2 feet, blaze healed.

Southwest corner Section 29: found a 1969 CS brass cap from which I found

A W.Oak 13" in diam. South 60° East 58.4 feet, blaze healed.

A Fir 14" in diam. South 46° West 28.5 feet, blaze healed.

A Fir 16" in diam. North 62° West 31.9 feet, blaze healed.

A Fir 24" in diam. North 63-1/2° East 44.9 feet, blaze healed.

Northwest corner of Section 29: found 1988 CS brass cap from which I found

A B.Oak 18" in diam. South 41° East 97.35 feet, blaze healed.

A Y.Pine 29" in diam. North 20° East 63.55 feet, blaze healed.

A W.Oak 12" in diam. South 7° East 64.7 feet, blaze healed.

A Y.Pine 21" in diam. North 81-1/2° West 8.55 feet, blaze healed.

A W.Oak 9" in diam. North 41° East 67.00 feet, blaze healed.

14561

Thence after an extensive search for the West 1/4 corner of Section 29, I calculated and set the corner as indicated on the map; thence I calculated and set the Center 1/4 corners as shown; thence using the record deed descriptions, I survey and mark true line around the perimeter of the property as shown.

Basis of bearing record GLO East line Section 29.

The survey was conducted with a Nikon DTM-A10LG Total Station.

The survey map is a separate document.

** RECEIVED **
Date 6-16-95 By BC
This survey Consists of:
1 sheet(s) Map
3 page(s) Narrative
JACKSON COUNTY
SURVEYOR

REGISTERED
PROFESSIONAL
LAND SURVEYOR

[Signature]
OREGON
JULY 11, 1966
MAX H. HULL
901

RENEW: JUNE 30, 1997.