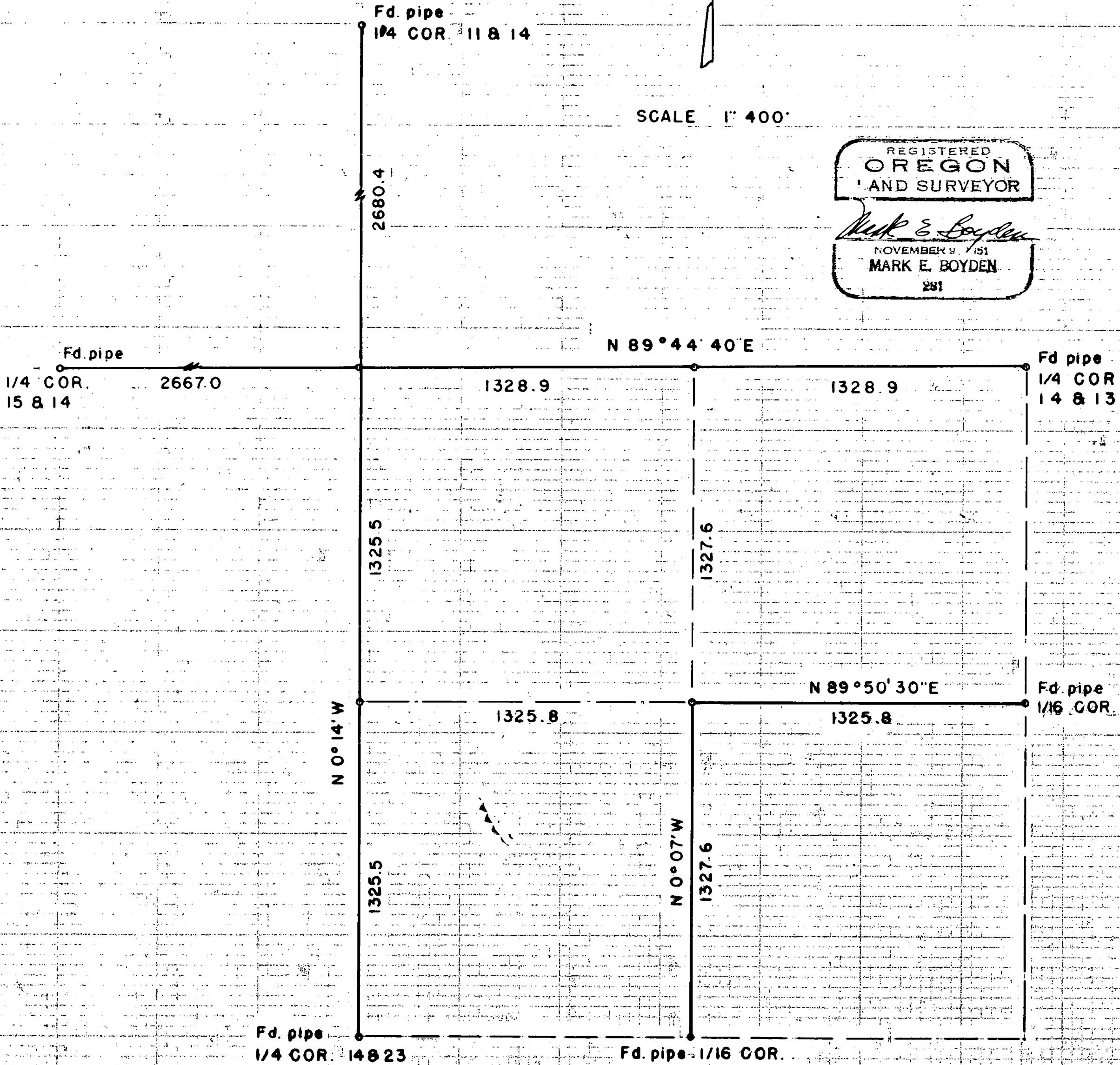
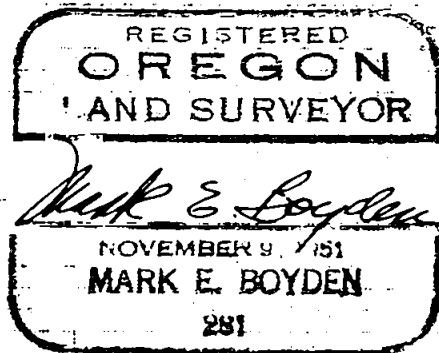


SURVEY FOR
ELK LBR. CO.
SEC. 14. T 32 S., R. 3 E.
M. E. BOYDEN. MAY 1960



SCALE 1" = 400'



SURVEY NARRATIVE TO COMPLY WITH PARAGRAPH 209.250
OREGON REVISED STATUTES

FOR: ELK LUMBER CO.
PURPOSE: To subdivide the southeast quarter of Section 14, Township 32 South, Range 3 East.

PROCEDURE:

The four exterior quarter corners of said Section 14 had previously been re-established by the County Surveyor. Also the south $\frac{1}{16}$ th corner between Sections 13 and 14, and the east $\frac{1}{16}$ th corner between Sections 14 and 23 had been established on a previous survey by this office (see recorded survey No. 828).

From these controls, traversed between the corners indicated by solid lines on the attached map calculating the true location for intermediate Section corners which corners were monumented and referenced as follows:

CENTER QUARTER CORNER:

In that this location falls in the base of a fir tree, I set a 1" galvanized iron pipe for witness corner North $85^{\circ}19'$ West 2.33 feet from the true corner. From said pipe witness corner, scribed the 18" Fir "281-BT" which bears South 76° East, 2.4 feet.

CENTER-EAST ONE SIXTEENTH SECTION CORNER

Set a 1" x 36" galvanized iron pipe for corner with a $\frac{1}{2}$ " expander filled with lead and stamped "E $\frac{1}{16}$ EW-Qtr. line Sec. 14 T32SR3E", from which

A 10" Fir, scribed 281-BT bears South $66^{\circ}W$, 9.4 ft.

An 8" Fir, scribed 281-BT bears North $52^{\circ}W$, 10.3 ft.

CENTER SOUTH ONE SIXTEENTH SECTION CORNER

Set a 1" x 36" galvanized iron pipe with a $\frac{1}{2}$ " expander filled with lead and stamped "S $\frac{1}{16}$ cor N.S. Qtr. line T32SR3E Sec. 14." for corner from which:

a 12" pine, scribed 281-BT bears North $14\frac{1}{4}^{\circ} E$, 20.1 ft.

A 12" pipe, scribed 281-BT bears North $59^{\circ} W$ 52.0 ft.

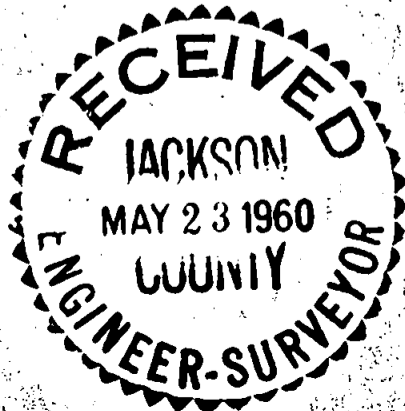
SOUTHEAST ONE SIXTEENTH SECTION CORNER

Set a 1" galvanized iron pipe for corner from which:

a 16" pine, scribed 281-BT bears N. $62\frac{1}{4}^{\circ} E$, 132.6 ft.

a 14" pine scribed 281-BT bears N. $1\frac{1}{2}^{\circ}E$, 151.0 feet.

Meridian was based on the solar bearings previously established on Survey No. 828.



May 1960

