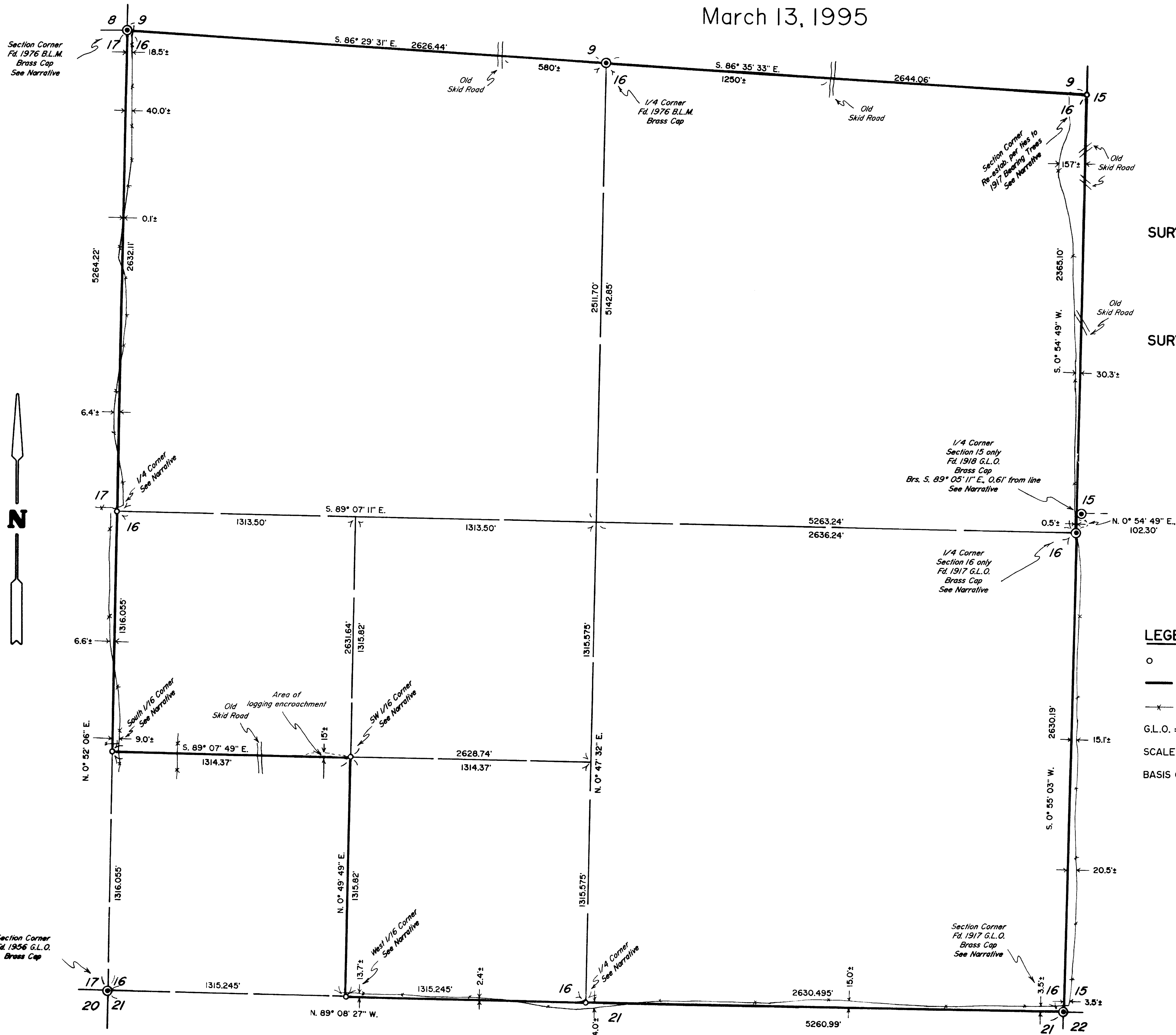


MAP OF SURVEY

LOCATED in Section 16, T. 33 S., R. 1 W., W.M.,
Jackson County, Oregon

March 13, 1995



SURVEY FOR: *Biose Cascade Timber and Wood Products Group*
P.O. Box 100
Medford, Oregon 97501

SURVEY BY: *Edwards Surveying and Land Planning Inc.*
816 West 8th Street
Medford, Oregon 97501
Phone: (503) 776-2313

**** RECEIVED ****
Date 3-19-95 By B
This survey consists of
1 sheet(s) Map
2 sheet(s) Narrative
JACKSON COUNTY
SURVEYOR

REGISTERED
PROFESSIONAL
LAND SURVEYOR
David A. Edwards
OREGON
JULY 26, 1988
DAVID A. EDWARDS
2339
Expires 12/31/95

LEGEND

- Indicates a 5/8" X 30" steel pin w/ red plastic cap mkd. "D.A. EDWARDS--LS 2339" set.
- Denotes lines blazed and tagged during this survey.
- *— Wandering fence line
- G.L.O. = General Land Office B.L.M. = Bureau of Land Management
- SCALE: 1" = 400'
- BASIS OF BEARINGS: Solar observation at the Northwest corner of Section 16.

Edwards Surveying & Land Planning Inc.

816 West 8th Street
Medford, OR 97501
Tel.: (503) 776-2313
FAX: (503) 776-9978



223 SW "I" Street
Grants Pass, OR 97526
Tel.: (503) 471-7059
FAX: (503) 471-7809

SURVEYING • ENGINEERING • PLANNING

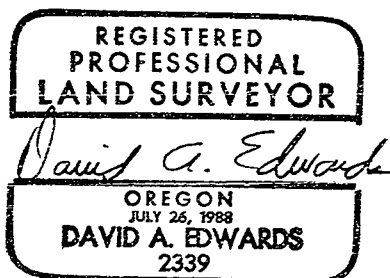
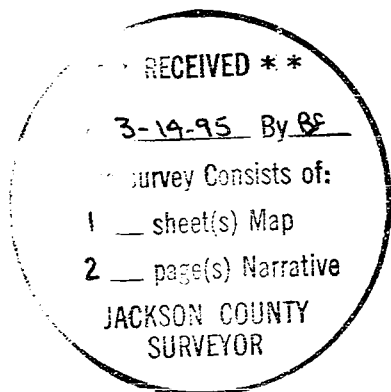
14436

At the South 1/16 cor. of Sections 16 & 17:
A 4" diam. Oak brs. N. 51° E., 8.3 ft.
A 5" diam. Fir brs. N. 23° W., 5.5 ft.

At the West 1/4 corner of Section 16:
A 9" diam. Fir brs. N. 32° E., 8.2 ft.
A 6" diam. Oak brs. S. 20° E., 10.5 ft..
An 8" diam. Oak brs. S. 81° W., 20.2 ft.
An 8" diam. Pine brs. N. 58° W., 9.65 ft.

At the Northeast corner of Section 16 the 1917
G.L.O. monument had been removed. Measurements
from the 1917 B.T.'s led to the discovery of a
mound of stones with an obvious hole where the
pipe had been. A new monument was set in this
hole at the record bearings and distances from
said bearing trees.

BASIS OF
BEARINGS: Solar Observation at the NW corner of Sec. 16.
EQUIPMENT: Nikon DTM-A5 electronic total station.
DATE
COMPLETED: March 13, 1995.



Expires 12/31/95

Edwards Surveying & Land Planning Inc.

816 West 8th Street
Medford, OR 97501
Tel.: (503) 776-2313
FAX: (503) 776-9978



223 SW "I" Street
Grants Pass, OR 97526
Tel.: (503) 471-7059
FAX: (503) 471-7809

SURVEYING • ENGINEERING • PLANNING

14436

SURVEY NUMBER

SURVEY NARRATIVE TO COMPLY WITH CHAPTER 209, PARAGRAPH 250, OREGON REVISED STATUTES

SURVEY FOR: Boise Cascade Timber and Wood Products Group
P.O. Box 100
Medford, Oregon 97501

LOCATION: In Section 16, T. 33 S., R. 1 W., W.M., in Jackson County, Oregon.

PURPOSE: To locate and monument the corners of Boise Cascade land in Section 16 and to blaze trees and place metal tags marking the boundaries of said lands as shown on the attached map.

PROCEDURE: Control traverses were run to tie in the controlling Government corners as shown. The subdivision of Section 16 was then computed based upon these found monuments. The true lines were then marked and trees were blazed if they were within 3' of the line. Aluminum tags mkd. "P/L BCC" were set at maximum 100' intervals along these lines. Bearing trees were marked according to the 1973 B.L.M. Manual and were measured to center of tree at root crown. Monuments set on this survey consist of 5/8" x 30" steel pins with red plastic caps mkd. "D.A. EDWARDS-LS 2339". The bearing trees are situated as follows:

New B.T. at the NW corner of Section 16:
A 12" diam. Pine brs. S. 35° E., 35.8 ft.

New B.T. at the East 1/4 corner Section 16:
A 6" diam. Pine brs. S. 12° W., 20.5 ft.

New B.T. at the West 1/4 corner Section 15:
An 8" diam. Pine brs. N. 67° W., 28.2 ft.

New B.T. at the SE corner of Section 16:
A 7" diam. Fir brs. N. 66° W., 15.7 ft.

At the South 1/4 corner of Section 16:
A 15" diam. Chinquapin brs. N. 32° E., 34.4 ft.
A 20" diam. Cedar brs. S. 40° W., 4.5 ft.
A 10" diam. Fir brs. S. 63° W., 29.1 ft.
An 8" diam. Cedar brs. N. 88° W., 22.0 ft.

At the West 1/16 cor. common to Secs. 16 & 21:
A 10" diam. Oak brs. N. 32° E., 3.9 ft.
A 10" diam. forked Oak brs. S. 82° W., 19.2 ft.

At the SW 1/16 corner of Section 16:
A 12" diam. Fir brs. N. 3° E., 9.5 ft.
An 8" diam. Fir brs. N. 77° E., 3.5 ft.