

**MAP OF SURVEY**  
 In the N.W. 1/4 of the N.E. 1/4 of  
 Section 17, T.37 S., R.2 W., W.M.  
 Jackson County, Oregon

SURVEY FOR:

Bud Ecker  
 1225 Footh Creek Road  
 Gold Hill, OR 97525

SURVEY BY:

L.J. Friar & Associates, P.C.  
 Consulting Land Surveyors  
 304 South Holly Street  
 Medford, Oregon 97501  
 Phone: (503) 772-2782

LEGEND:

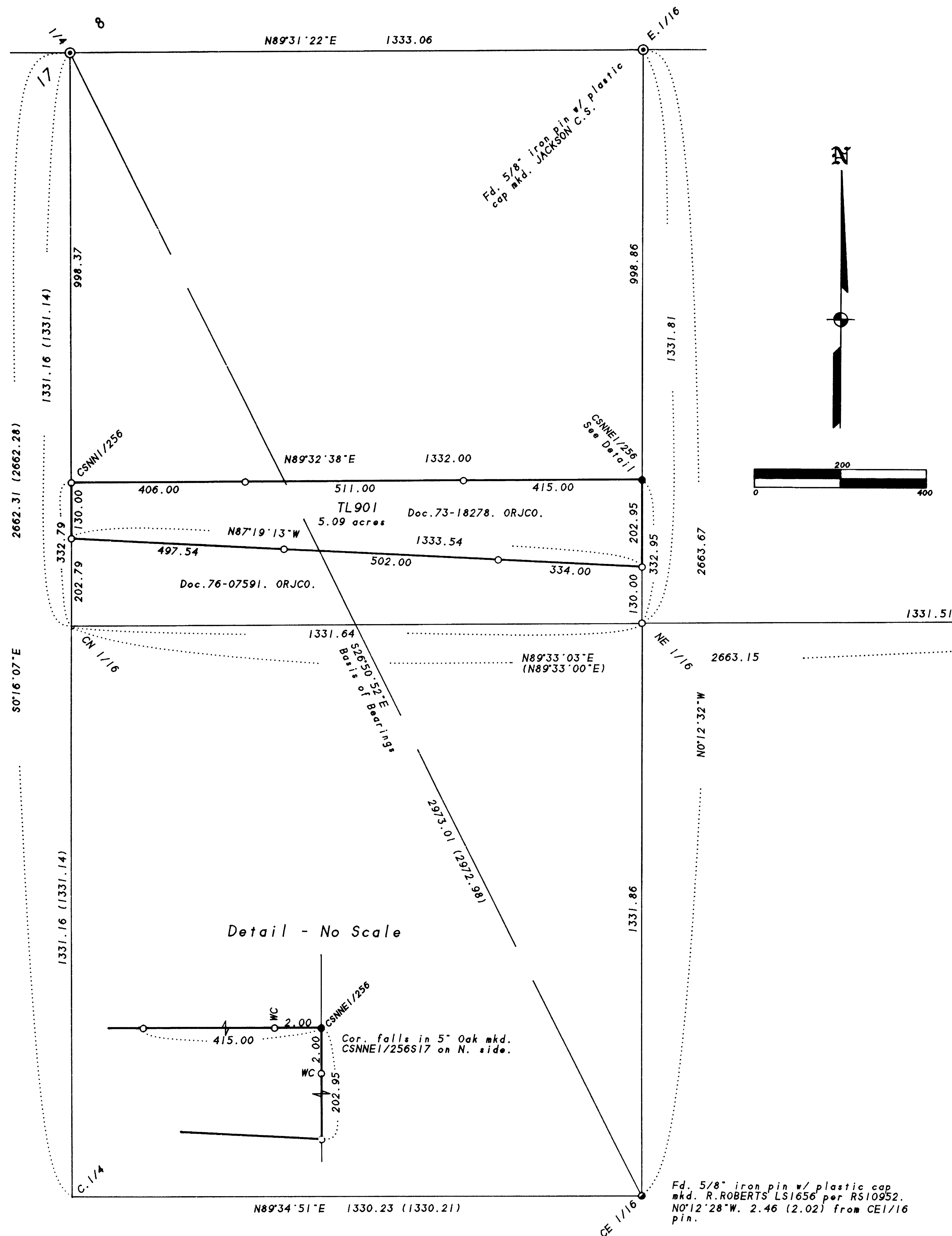
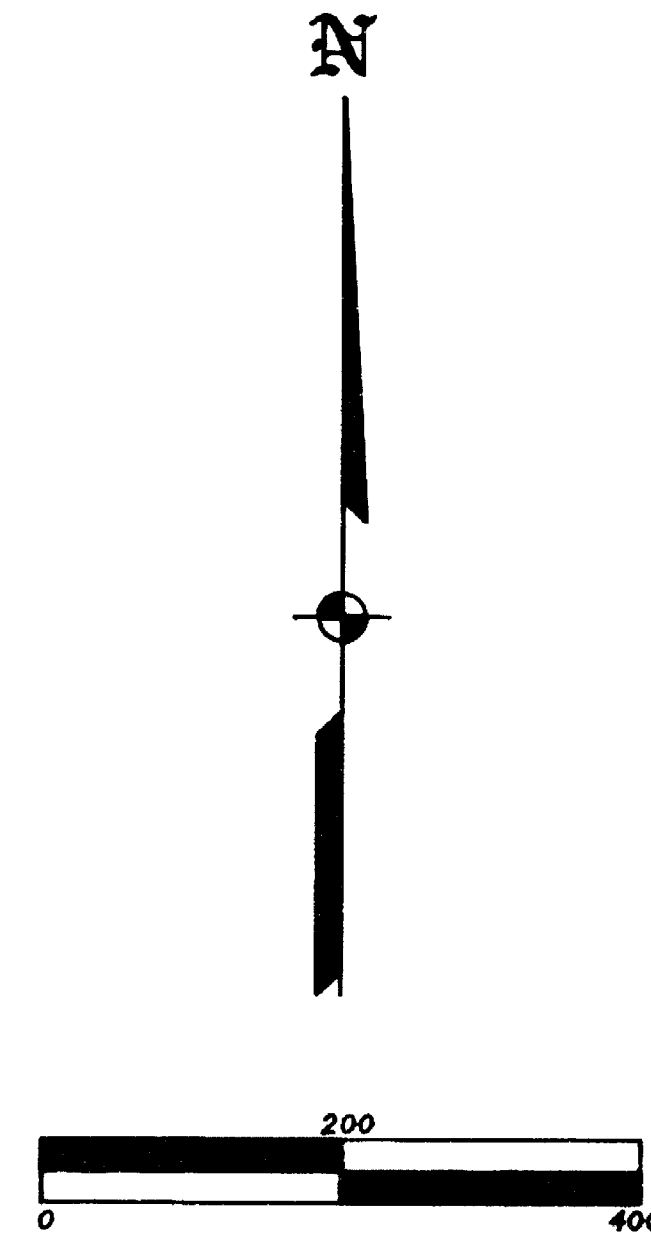
- ⊙ - Found County Surveyor's brass capped monument & accessories, except as noted.
- - Found 5/8" iron pin per RS1934.
- - Found 5/8" iron pin w/ plastic cap mkd. R.ROBERTS LS1656 per RS10952.
- - Set 5/8" x 30" iron pin with plastic cap mkd. L.J. FRIAR & ASSOC. See narrative for accessories to fractional corners.
- RS - Recorded Survey #. ORJCO - Official Records of Jackson County, Oregon.
- ( ) - Record data per RS10952.
- WC - Witness Corner.

BASIS OF BEARINGS: Survey No. 10952.

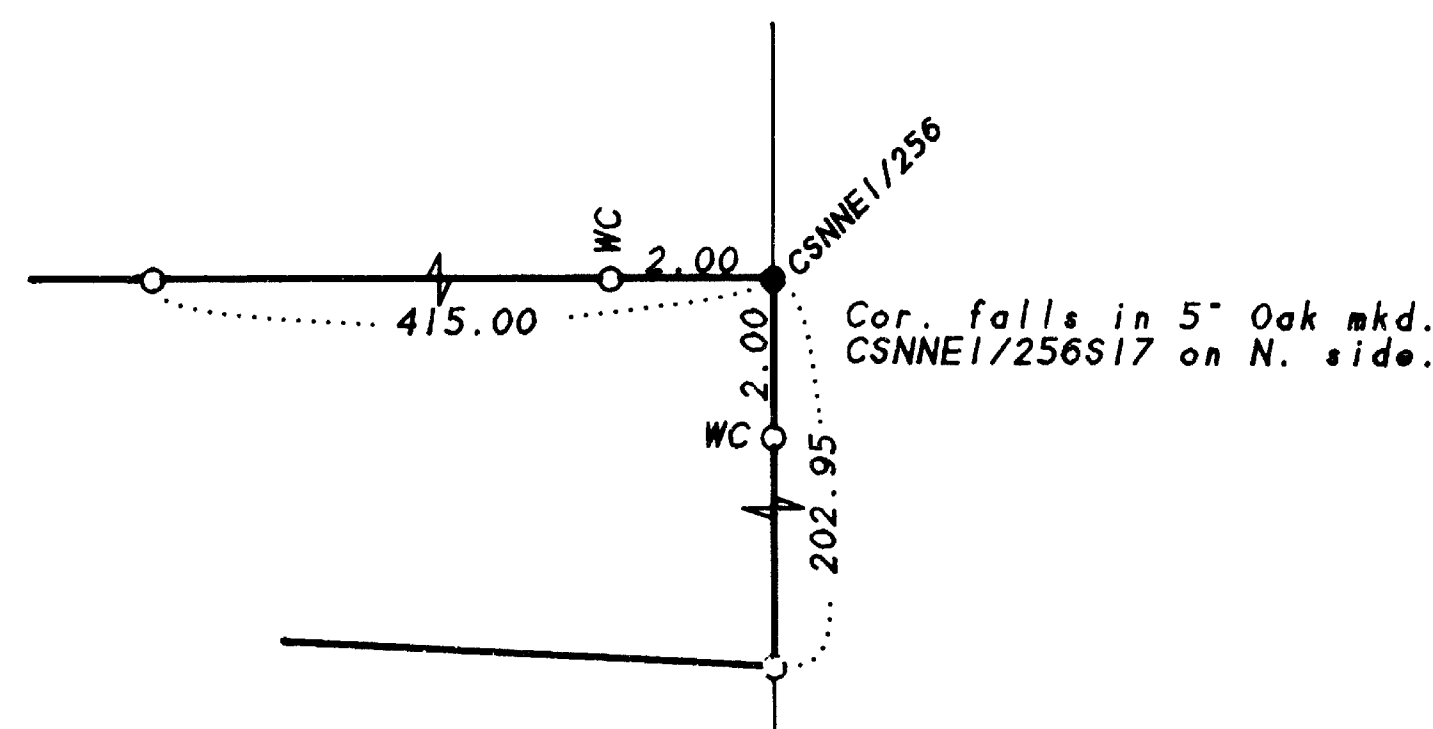
UNIT OF MEASUREMENT - Feet

DATE: December 15, 1994

SCALE: 1" = 200'



Detail - No Scale



Fd. 5/8" iron pin w/ plastic cap  
 mkd. R.ROBERTS LS1656 per RS10952.  
 N0°12'28"W. 2.46 (2.02) from CE1/16  
 pin.

SURVEY NARRATIVE TO COMPLY WITH O.R.S. 209.250

PURPOSE:

To survey and monument the corners of TL 900 and set pins on the North and South lines per the client's request.

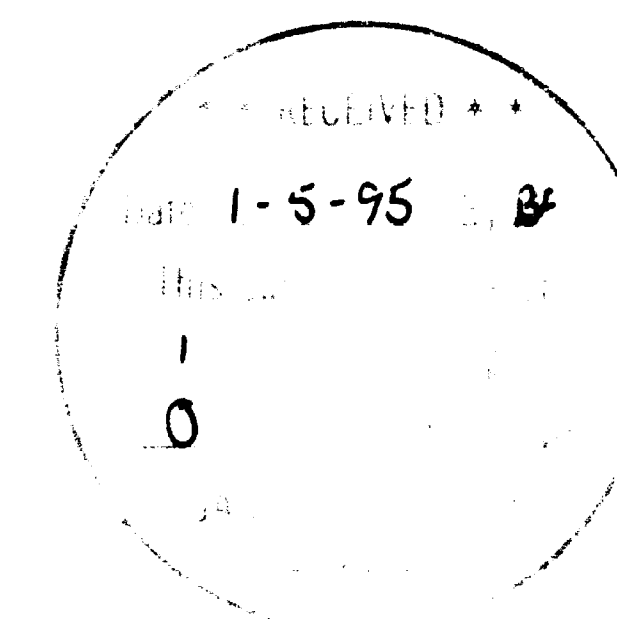
PROCEDURE:

Tied to County Surveyor re-established corners and corners monumented by RS1934 & 10952 into a series of closed loop traverses. Rotated bearings to the diagonal from the N. 1/4 corner to the CE 1/16 corner as calculated from RS10952. Calculated the position of the C. 1/4 per RS10952 by bearing-bearing intersection. Calculated the fractional corners and deed corners needed and set same. Set pins on the North & South lines as shown hereon. Those monuments found as well as those set are as shown hereon.

Accessories to fractional corners:

From the CSNN 1/256 corner:

- A 4" Pine bears N.60°E.. 9.9'. mkd. "XBT".
- An 8" Fir bears N.78°W.. 8.1'. mkd. "CSNN1/256S17BT".



REGISTERED  
 PROFESSIONAL  
 LAND SURVEYOR

James E. Hibbs  
 OREGON  
 JULY 17, 1986  
 JAMES E. HIBBS  
 2234  
 Renewal Date 6-30-95

372W17 TL901