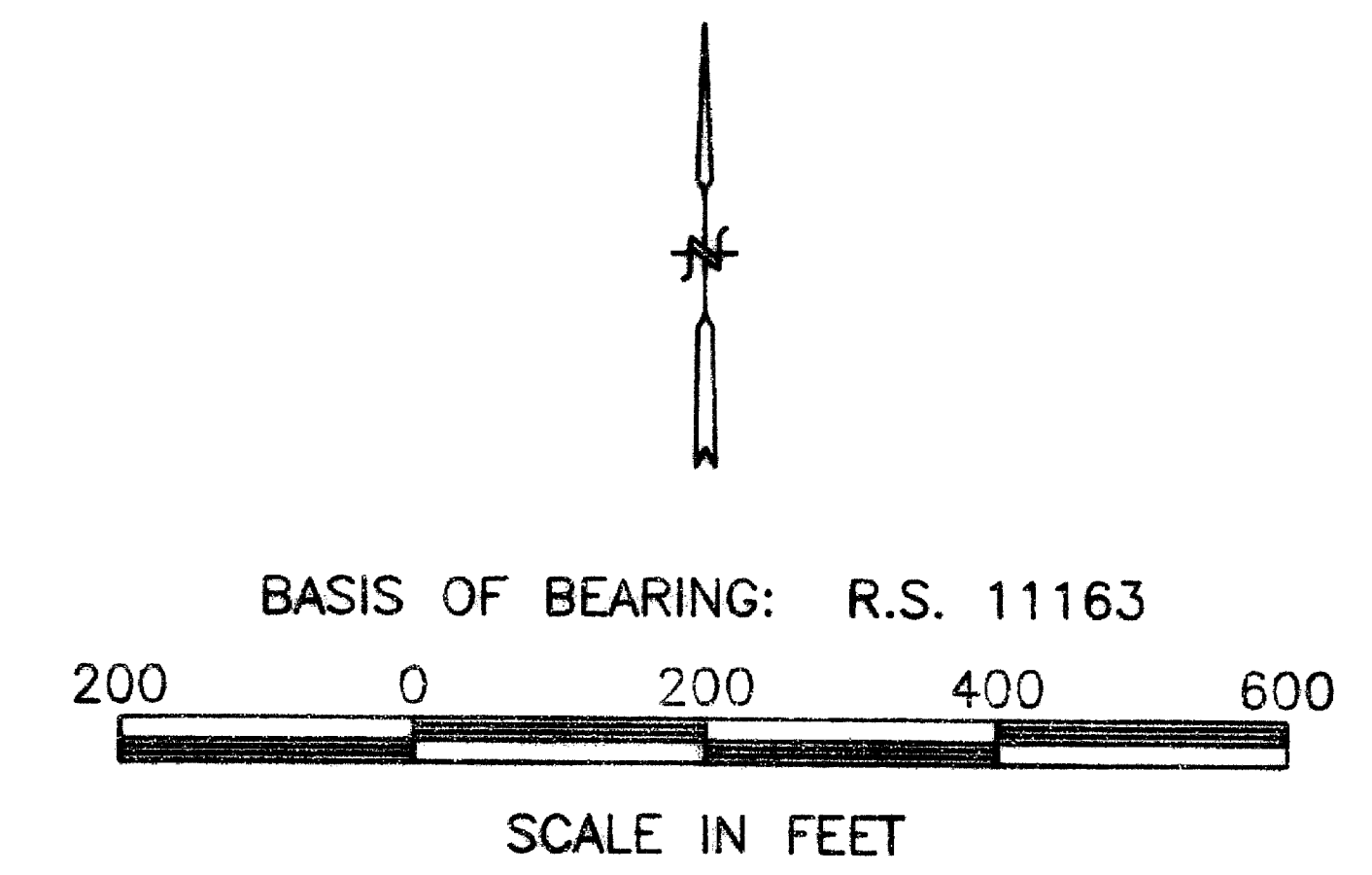
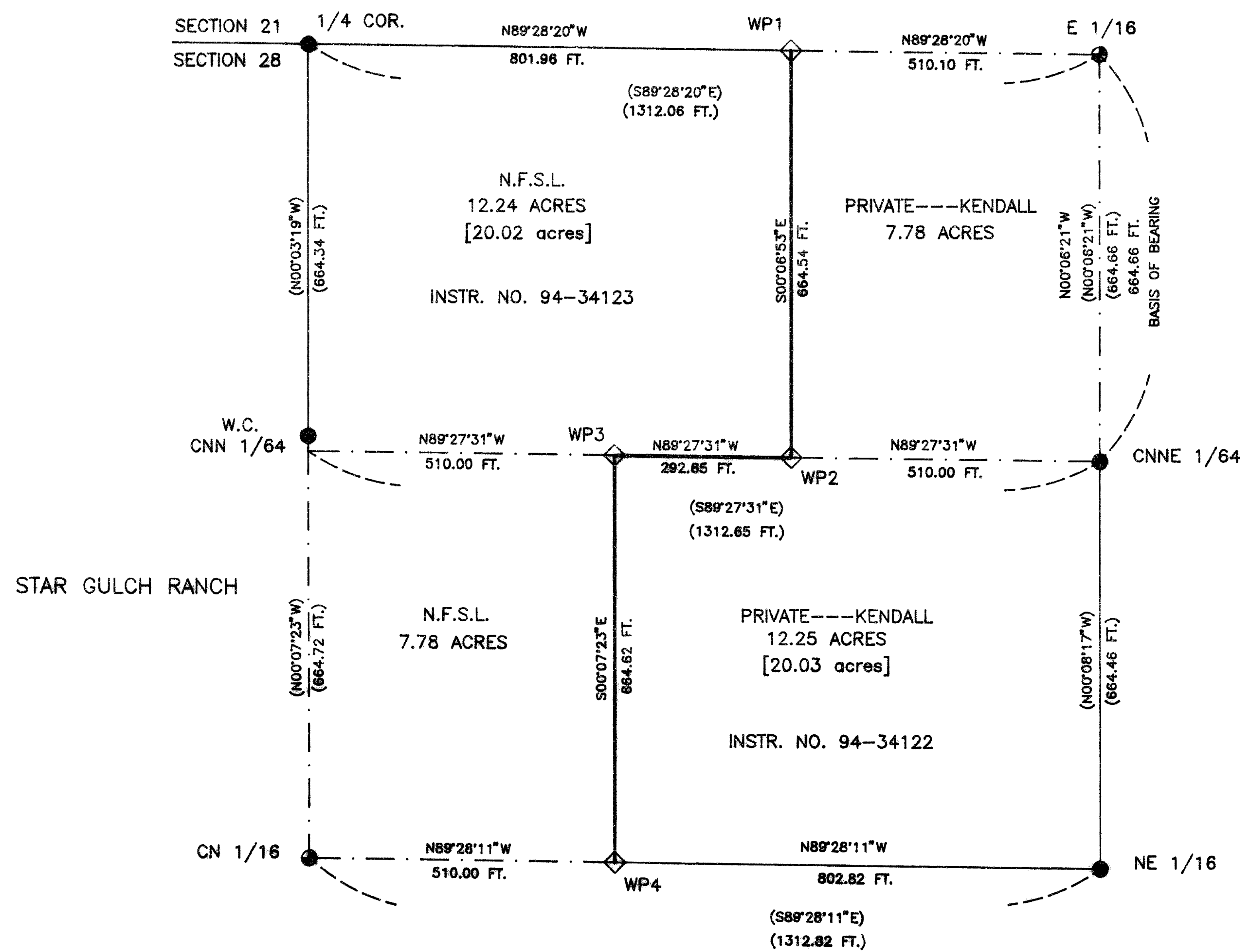


MAP OF SURVEY



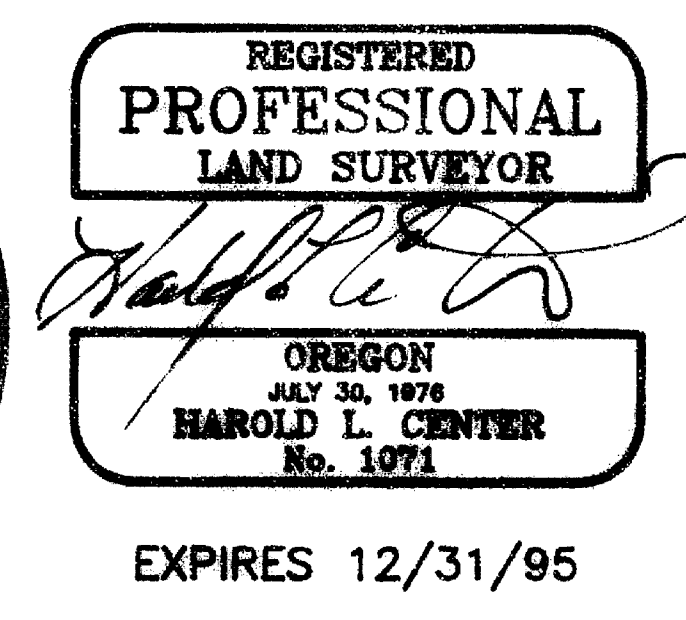
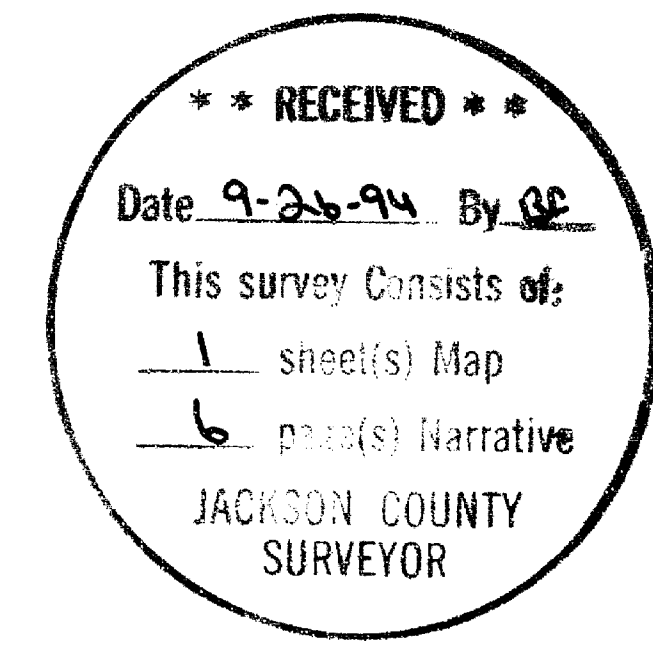
AUGUST 19, 1994

HISTORY OF SURVEYS

SEE ATTACHED NARRATIVE

CERTIFICATE OF SURVEY

I, HAROLD L. CENTER, REGISTRATION NO. 1071, REGISTERED PROFESSIONAL LAND SURVEYOR, STATE OF OREGON, HEREBY CERTIFY THAT THIS PLAT CORRECTLY REPRESENTS A SURVEY MADE BY ME OR UNDER MY DIRECT SUPERVISION IN CONFORMANCE WITH THE LAWS OF THE STATE OF OREGON AT THE REQUEST OF THE UNITED STATES FOREST SERVICE.



LEGEND

- ◇ MONUMENT SET - 5/8" X 24" IRON PIN WITH 1-1/2" DIAMETER ALUMINUM CAP.
- MONUMENT SET BY L.S. 1071, R.S. 11163, 1988.
- MONUMENT SET BY L.S. 222, R.S. 3497, 1967.
- LINE MARKED AND POSTED THIS SURVEY.
- () RECORD SURVEY NO. 11163.
- - - - PROPERTY LINE DE-POSTED THIS SURVEY

APPROVAL 94-22-LLA

APPROVED BY THE JACKSON COUNTY DEPARTMENT OF PLANNING AND DEVELOPMENT

APPROVED BY: Carol Parker DATE: 9-26-94

TAX LOTS
393W28 - TL700
393W - TL3700

PROJECT NO. ROR 94-5

U.S. DEPARTMENT OF AGRICULTURE
FOREST SERVICE
REGION 6 - ROGUE RIVER NATIONAL FOREST

LOT LINE ADJUSTMENT
94-22-LLA
T.39S.,R.3W.,NW1/4NE1/4,SEC. 28

REVIEWED BY: Harold L. Center DATE: 9/26/94
APPROVED BY: David Rising DATE: 9/26/94

**SURVEY NARRATIVE TO COMPLY WITH
PARAGRAPH 209.250, OREGON REVISED STATUTES**

SURVEY FOR:

Thomas E. Kendall
290 Star Gulch Road
Jacksonville, Oregon 97530

-and-

U.S. Forest Service
P.O. Box 520
Medford, Oregon 97501

LOCATION:

Township 39 South, Range 3 West, NW 1/4 NE 1/4 Section 28, W.M.,
Jackson County, Oregon.

PURPOSE:

The purpose of this survey is to establish the adjusted property boundaries as outlined in Jackson County Lot Line Adjustment (94-22-LLA). These adjusted property boundaries will resolve encroachments by the U.S. Forest Service and Thomas E. Kendall. This survey will eventually be sent to the Bureau of Land Management so a supplemental plat can be drawn, correcting federal ownership of lands within this Quarter of a Section.

HISTORY OF SURVEYS:

This current survey is based on my 1988 survey; reference Jackson County Record of Survey No. 11163. A detailed history of surveys can be found in that 1988 survey.

PROCEDURE:

Prior to commencement of this survey an investigation of all controlling corner points was made. All were found to agree with the descriptions as outlined in Record of Survey No. 11163. From the northeast 1/16 corner, I traversed around the NW 1/4 NE 1/4 northerly, tying in the CNNE 1/64 corner for Section 28 and the E 1/16 corner for Sections 21 and 28. I then traversed westerly and southerly establishing positions for the new property corners as shown on the attached Map of Survey. I closed my traverse by tying to two traverse points from Record of Survey No. 11163. The BLM Manual (1973) was followed for marking of the new property corners. Because this tract of land will eventually be noted on a BLM supplemental plat, the new property corners established this survey were marked as witness points (WP), as per section 4-17 of the manual. These witness points are the true property corners for this survey, and mark the boundary between private and federal ownership.

That portion of the N 1/2 of this 40 acre tract that was previously marked and posted as National Forest land that will now become private, was de-posted as follows: Aluminum posts were left in the ground, but all National Forest Boundary signs were removed. Blazes on trees that were originally painted red were painted with black paint. Bearing tree tags and signs were left on the trees.

The new boundary between private and Forest Service was marked and posted with six foot aluminum posts with National Forest Boundary signs attached. Trees along the line were blazed and painted with red timber marking paint.

BASIS OF BEARING:

Record Survey No. 11163- (CNNE 1/64 to E 1/16)

EQUIPMENT USED:

Wild T-2 theodolite and Sokkisha Red 2L EDM.

CORNERS ACCEPTED FOR CONTROL

The one-quarter corner for sections 21 and 28, Township 39 South, Range 3 West, W.M.

At the corner point, I found a 2 7/8-inch diameter iron post with a 2 1/4-inch diameter brass disk inside, marked:

S21
1/4 _____
S28
1967
RLS 222
ORE

from which,

A 12-inch diameter fir bears S. 83° 47' 14" W., 4.85 feet distance. This tree is now dead.

A 15-inch diameter oak bears N. 9° 32' 14" E., 16.60 feet distance, marked with a decayed face (no marks visible).

A 22-inch diameter fir bears N. 25° 52' 14" E., 31.06 feet distance, marked with a healed blaze.

A 14-inch diameter pine bears S. 62° 06' 46" E., 52.20 feet distance, with fragmentary scribe marks visible in a partially healed blaze.

The East one-sixteenth corner for sections 21 and 28, Township 39 South, Range 3 West, W.M.

At the corner point, I found a 2 1/2-inch diameter brass cap monument protruding 6 inches above ground, marked:

T39S R3W
 S21
 E 1/16—
 S28
 1988
 LS 1071

from which,

A 17-inch diameter pine bears S. 10° 15' 28" W., 52.71 feet distance, with fragmentary scribe marks visible in a partially healed blaze.

A 13-inch diameter fir bears N. 78° 29' 32" W., 9.92 feet distance, with fragmentary scribe marks visible in a partially healed blaze.

The center-north northeast 1/64th corner for section 28, Township 39 South, Range 3 West, W.M.

At the corner point, I found a 2 7/8-inch diameter iron post with a 2 1/4-inch diameter brass disk inside, marked:

S28
 CNNE
 .
 1/64
 1967
 RLS 222
 ORE

A 3/4-inch diameter iron pipe bears West, 1.00 feet distance.

The northeast one-sixteenth corner for section 28, Township 39 South, Range 3 West, W.M.

At the corner point, I found a 2 7/8-inch diameter iron post with a 2 1/4-inch diameter brass disk inside, marked:

NE 1/16 S28
 .
 1967
 RLS 222
 ORE

from which,

A 15-inch diameter fir bears N. 58° 59' 20" W., 30.30 feet distance, marked with a healed blaze.

A 7-inch diameter oak bears N. 41° 16' 40" E., 31.86 feet distance, marked with a healed blaze.

The center-north one-sixteenth corner for section 28, Township 39 South, Range 3 West, W.M.

At the corner point, I found a 2 1/2-inch diameter brass cap monument protruding 6 inches above ground, marked:

T39S R3W
 C
 N 1/16 | S28
 C
 1988
 LS 1071

from which,

A 9-inch diameter oak bears S. 72° 56' 58" W., 13.82 feet distance, with fragmentary scribe marks visible in a partially healed blaze.

A 14-inch diameter fir bears S. 66° 37' 02" E., 21.40 feet distance, with fragmentary scribe marks visible in a partially healed blaze.

The witness corner for the center-north-north 1/64th corner, section 28, Township 39 South, Range 3 West, W.M.

At the witness corner point, I found a 2 7/8-inch diameter iron post with a 2 1/4-inch diameter brass disk inside, marked:

WC
 C
 CNN 1/64 | S28
 C
 1967
 RLS 222
 ORE

no accessories were found.

NOTE: The above-mentioned witness corner bears N. 0° 07' 23" W., 25.00 feet distance from the CNN 1/64 corner position, which falls on the side of a cutbank, north of Star Gulch Road.

PROPERTY CORNERS ESTABLISHED THIS SURVEY:

WP1.

At the corner point, I set a 5/8-inch diameter X 24-inch long iron pin, with a 1 1/2-inch diameter aluminum cap set flush with the ground, marked:

WP1
S21
.
S28
1994
LS 1071

No accessories were marked.

WP2.

At the corner point, I set a 5/8-inch diameter X 24-inch long iron pin, with a 1 1/2-inch diameter aluminum cap set flush with the ground, marked:

WP2
S28
.
1994
LS 1071

No accessories were marked.

WP3.

At the corner point, I set a 5/8-inch diameter X 24-inch long iron pin, with a 1 1/2-inch diameter aluminum cap set flush with the ground, marked:

WP3
S28
.
1994
LS 1071

No accessories were marked.

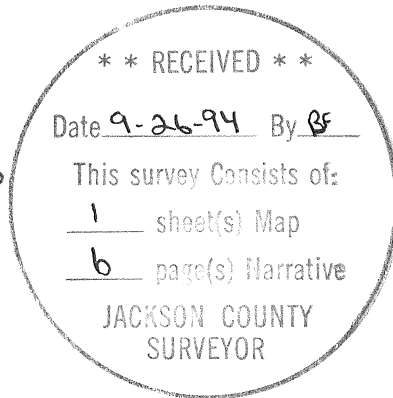
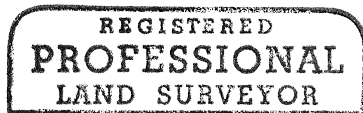
WP4.

At the corner point, I set a 5/8-inch diameter X 24-inch long iron pin, with a 1 1/2-inch diameter aluminum cap set flush with the ground, marked:

WP4
S28
.
1994
LS 1071

No accessories were marked.

August 19, 1994



EXPIRES 12/31/95

HAROLD L. CENTER
Registered Professional Land Surveyor
Oregon Certificate No. 1071