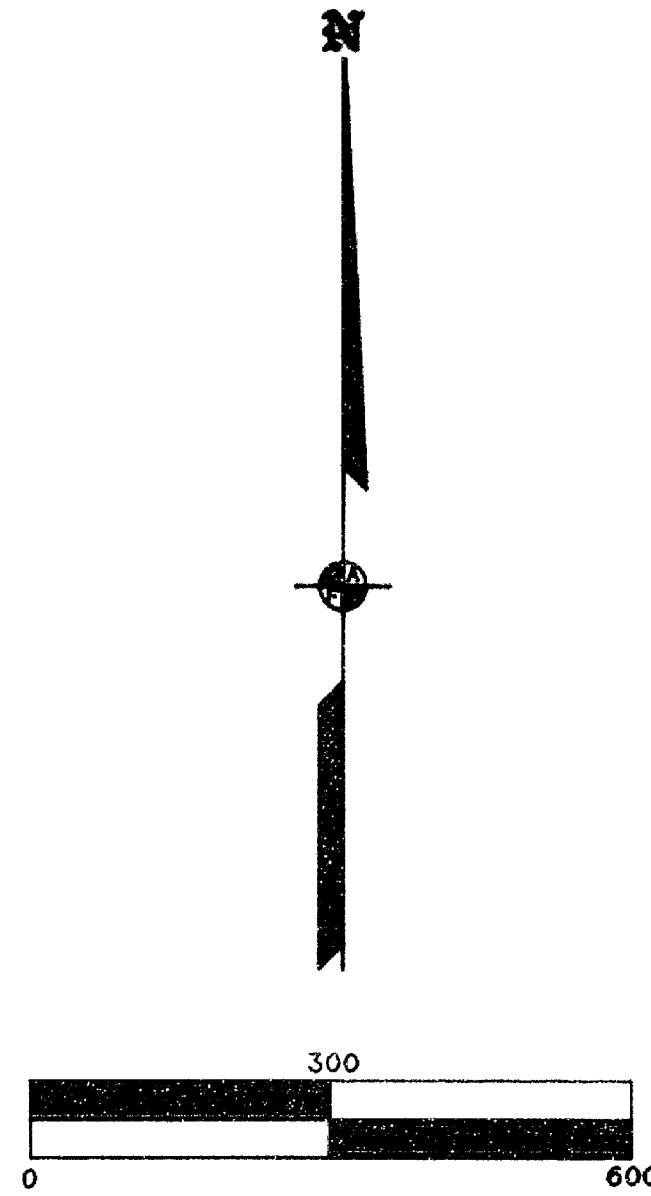


**MAP OF SURVEY**  
 Being the N.E. 1/4 of the S.W. 1/4  
 of Sec. 23, T. 38 S., R 4 W., W.M.  
 Jackson County, Oregon



SURVEY FOR:

Jim Lundberg  
 13230 Highway 238  
 Jacksonville, OR 97530

SURVEY BY:

L.J. Friar & Associates P.C.  
 Consulting Land Surveyors  
 304 South Holly Street  
 Medford, OR 97501  
 Phone: (503) 772-2782

LEGEND:

- ⊙ - Found B.L.M. brass capped monument & accessories.
- ⊙ - Found County Surveyor's brass capped monument & accessories.
- - Found 5/8" iron pin w/ plastic cap mkd. FRIAR PLS961 per RS9308.
- - Set 5/8" x30" iron pin w/ plastic mkd. L.J.FRIAR & ASSOC. See narrative for accessories to fractional corners.
- ( ) - Record data as shown. RS = Recorded Survey #.

BASIS OF BEARINGS: RS 9308

UNIT OF MEASUREMENT: Feet

DATE: August 10, 1994

SCALE: 1" = 200'

SURVEY NARRATIVE TO COMPLY WITH O.R.S. 209.250.

PURPOSE: To survey and monument the corners of the N.E. 1/4 of the S.W. 1/4 of Section 23.

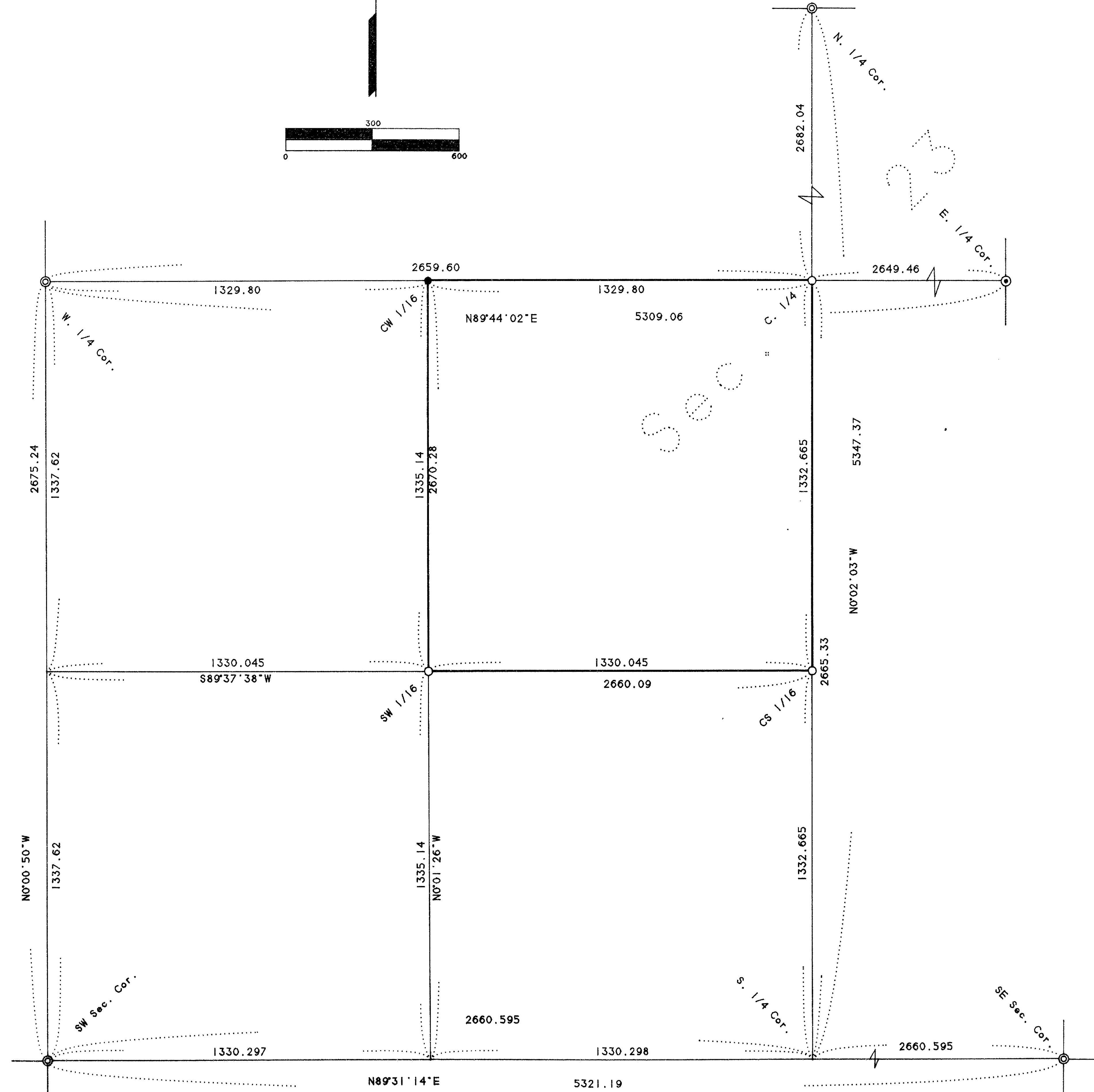
PROCEDURE: From existing control established previously by this office during RS8941 & 9308, made a tie to the S.W. corner of the Section. The found distance between the S.E. corner and the S.W. corner matched that shown on previous Surveys by this office and by RS4684. The found position of the S.W. corner was held by this Survey. A slight bearing difference was found between this Survey and previous Surveys by this office since the S.W. corner position shown on the previous Surveys by this office was map record per RS4684. With the exterior Sectional corners tied, fractionalized the S.W. 1/4 of the Section and set pins as shown hereon.

Accessories to the fractional corners are as follows:

At the C. 1/4 corner:  
 A 14" Oak bears N.85°E.. 68.5'. Mkd C1/4S23BT.  
 A 5/8" iron pin bears S.12°23'E.. 30.19'.  
 A 5/8" iron pin bears S.87°27'W.. 13.71'.  
 A 5/8" iron pin bears N.05°47'W.. 15.22'.

At the CS 1/16 corner:  
 A 36" Pine bears S.24°E.. 66.9'. Mkd CS1/16S23BT.  
 A 5/8" iron pin bears S.65°26'W.. 12.82'.

At the SW 1.16 corner:  
 An 8" Madrone bears N.87°E.. 17.5'. Mkd SW1/16S23BT.  
 A 10" Madrone bears S.24°W.. 13.5'. Mkd SW1/16S23BT.  
 A 1/2" iron pipe bears S.69°10'W.. 3.12'.



384W23C TL100

