

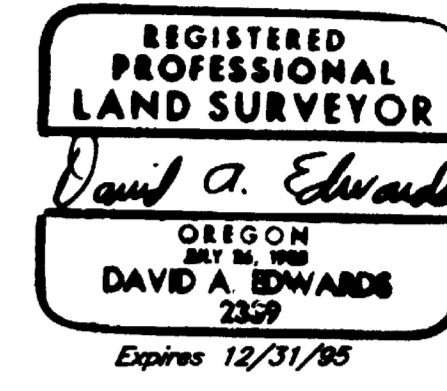
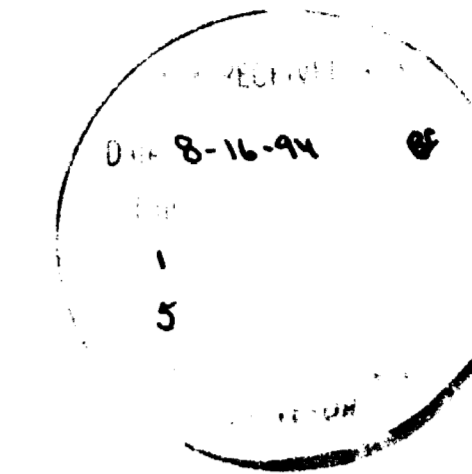
SURVEYED FOR: Boise Cascade Timber and Wood Products Group  
P.O. Box 100  
Medford, Oregon 97501

# MAP OF SURVEY

LOCATED in Section 6, T. 33 S., R. 1 W., W.M.,  
in Jackson County, Oregon.

July 28, 1994

SURVEYED BY: Edwards Surveying and Land Planning, Inc.  
816 West 8th Street  
Medford, Oregon 97501  
Phone (503) 776-2313

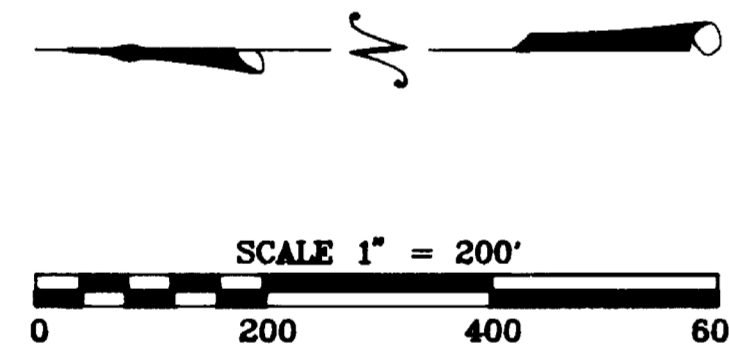


### LEGEND

- ⊙ Indicates BLM Brass capped iron pipe per S.N. 13594.
- Indicates 5/8" x 30" I. Pin w/cap mkd. "D.A. EDWARDS-LS 2339" fd. per S.N. 13594.
- Indicates 5/8" x 24" steel pin w/red plastic cap mkd. "D.A. EDWARDS-LS 2339" set unless noted otherwise.
- Indicates property line tagged and blazed this survey.

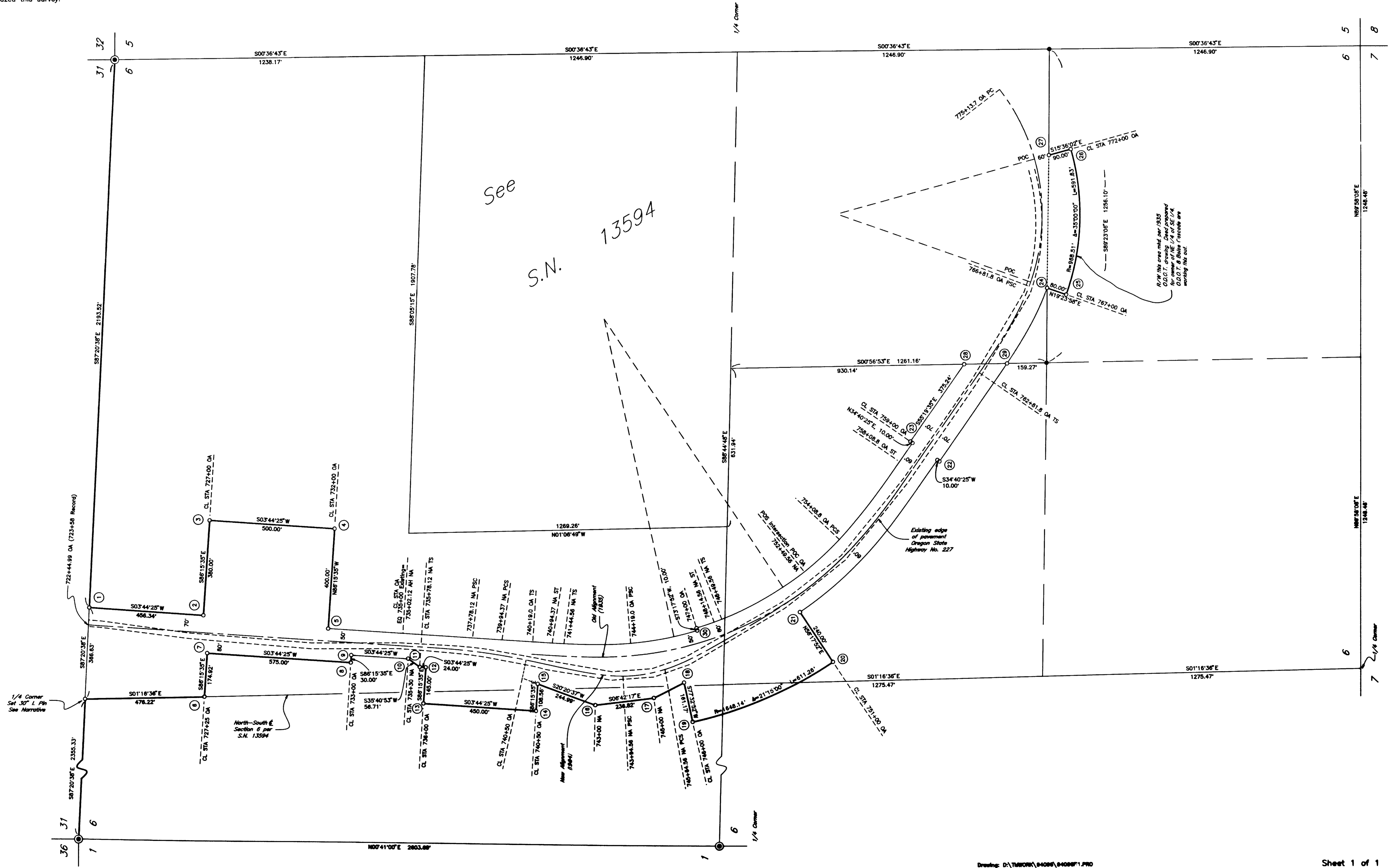
- AH = Ahead
- CL = Centerline
- EQ = Equation
- NA = New Alignment
- OA = Old Alignment
- PC = Point of Curvature
- PCS = Point of Curve to Spiral
- POC = Point on Curve
- POS = Point on Spiral
- PSC = Point of Spiral to Curve
- ST = Spiral to Tangent
- STA = Station
- TS = Tangent to Spiral

Doc. No. = Official records for Jackson County, Oregon  
 S.N. = Survey Number  
 Vol. & Pg. = Deed records for Jackson County, Oregon  
 BASIS OF BEARINGS: Existing control per Survey Number 13594



NOTE: R/W mons. with a (2) alongside have bearing trees established. See separate narrative.

DEEDS used in R/W establishment: Vol. 203, Pg. 536;  
Vol. 210, Pg. 526; Vol. 215, Pg. 564; Vol. 218, Pg. 611  
and Doc. No. 85-13390.



# Edwards Surveying & Land Planning Inc.

816 West 8th Street  
Medford, OR 97501  
Tel.: (503) 776-2313  
FAX: (503) 776-9978



223 SW "I" Street  
Grants Pass, OR 97526  
Tel.: (503) 471-7059  
FAX: (503) 471-7809

SURVEYING • ENGINEERING • PLANNING

## 14150

AT: 25

FROM WHICH: A 6" diam. Fir bears N. 55° W. for 4.3' to center of tree mkd. "X BT" on double blaze.

An 8" diam. Fir bears S. 16° E. for 17.5' to center of tree mkd. "X BT" on double blaze.

AT: 26

FROM WHICH: An 8" diam. Fir bears N. 57° W. for 12.3' to center of tree mkd. "X BT" on double blaze.

A 6" diam. Fir bears N. 6° W. for 17.7' to center of tree mkd. "X BT" on double blaze.

AT: 27

FROM WHICH: A 15" diam. Fir bears S. 23° W. for 16.4' to center of tree mkd. "X BT" on double blaze.

A 5" diam. Fir bears S. 12° E. for 5.2' to center of tree mkd. "X BT" on double blaze.

AT: 28

FROM WHICH: An 8" diam. Fir bears N. 37° W. for 12.7' to center of tree mkd. "X BT" on double blaze.

A 12" diam. Fir bears N. 27° E. for 14.0' to center of tree mkd. "X BT" on double blaze.

AT: 29

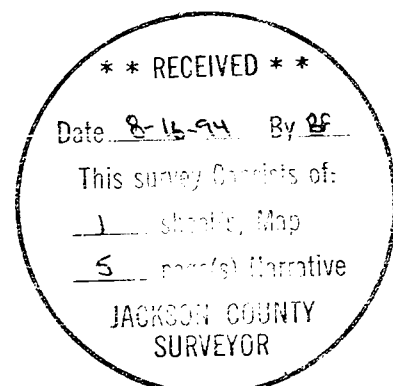
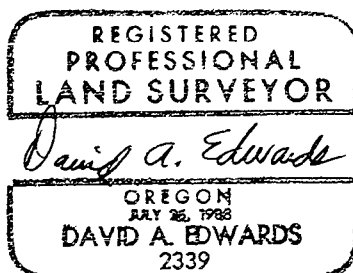
FROM WHICH: A 9" diam. Fir bears N. 88° W. for 5.3' to center of tree mkd. "X BT" on double blaze.

A 10" diam. Fir bears S. 29° W. for 8.4' to center of tree mkd. "X BT" on double blaze.

AT: 30 60' R/W

FROM WHICH: A 17" diam. Pine bears N. 46° W. for 9.1' to center of tree mkd. "X BT" on double blaze.

A 7" diam. Fir bears N. 27° E. for 10.8' to center of tree mkd. "X BT" on double blaze.



Expires 12/31/95

# Edwards Surveying & Land Planning Inc.

816 West 8th Street  
Medford, OR 97501  
Tel.: (503) 776-2313  
FAX: (503) 776-9978



223 SW "I" Street  
Grants Pass, OR 97526  
Tel.: (503) 471-7059  
FAX: (503) 471-7809

SURVEYING • ENGINEERING • PLANNING

14150

AT: 17

FROM WHICH: A 19" diam. Cedar bears S. 59° W. for 31.5' to center of tree mkd. "X BT" on double blaze.

A 20" diam. Cedar bears N. 78° W. for 35.5' to center of tree mkd. "X BT" on double blaze.

AT: 18

FROM WHICH: No trees marked at this corner

AT: 19

FROM WHICH: A 17" diam. Fir bears S. 87° E. for 10.2' to center of tree mkd. "X BT" on double blaze.

A 13" diam. Ponderosa Pine bears S. 42° W. for 8.2' to center of tree mkd. "X BT" on double blaze.

AT: 20

FROM WHICH: An 11" diam. Fir bears N. 72° E. for 20.2' to center of tree mkd. "X BT" on double blaze.

An 8" diam. Fir bears S. 27° W. for 11.7' to center of tree mkd. "X BT" on double blaze.

AT: 21

FROM WHICH: A 12" diam. Fir bears N. 34° E. for 2.5' to center of tree mkd. "X BT" on double blaze.

An 8" diam. Fir bears N. 78° W. for 9.7' to center of tree mkd. "X BT" on double blaze.

AT: 22 70' R/W

FROM WHICH: A 5" diam. Ponderosa Pine bears S. 48° W. for 6.5' to center of tree mkd. "X BT" on double blaze.

A 12' diam. Madrone bears S. 8° W. for 11.5' to center of tree mkd. "X BT" on double blaze.

AT: 23 70' R/W

FROM WHICH: A 7" diam. Ponderosa Pine bears N. 68° W. for 11.9' to center of tree mkd. "X BT" on double blaze.

A 7" diam. Ponderosa Pine bears S. 20° E. for 13.4' to center of tree mkd. "X BT" on double blaze.

AT: 24

FROM WHICH: A 5" diam. Fir bears N. 53° W. for 9.6' to center of tree mkd. "X BT" on double blaze.

A 4" diam. Fir bears S. 50° W. for 7.6' to center of tree mkd. "X BT" on double blaze.

# Edwards Surveying & Land Planning Inc.

816 West 8th Street  
Medford, OR 97501  
Tel.: (503) 776-2313  
FAX: (503) 776-9978



223 SW "I" Street  
Grants Pass, OR 97526  
Tel.: (503) 471-7059  
FAX: (503) 471-7809

SURVEYING • ENGINEERING • PLANNING

## 14150

AT: 9

FROM WHICH: A 17" diam. Ponderosa Pine bears N. 31° for 4.0' to center of tree mkd. "X BT" on double blaze.

An 18" diam. Fir bears S. 10° W. for 5.1' to center of tree mkd. "X BT" on double blaze.

AT: 10

FROM WHICH: An 8" diam. Pine bears S. 0° E. for 7.2' to center of tree mkd. "X BT" on double blaze.

An 11" diam. Fir bears N. 71° W. for 22.1' to center of tree mkd. "X BT" on double blaze.

AT: 11

FROM WHICH: A 10" diam. Pine bears S. 79° E. for 18.7' to center of tree mkd. "X BT" on double blaze.

A 21" diam. Fir bears S. 7° W. for 3.9' to center of tree mkd. "X BT" on double blaze.

AT: 12

FROM WHICH: A 13" diam. Fir bears N. 2° W. for 11.8' to center of tree mkd. "X BT" on double blaze.

A 15" diam. Pine bears N. 70° E. for 22.3' to center of tree mkd. "X BT" on double blaze.

AT: 13

FROM WHICH: A 26" diam. Fir bears N. 20° W. for 25.2' to center of tree mkd. "X BT" on double blaze.

A 20" diam. Madrone bears S. 32° W. for 15.1' to center of tree mkd. "X BT" on double blaze.

AT: 14

FROM WHICH: A 9" diam. Fir bears S. 81° E. for 15.1' to center of tree mkd. "X BT" on double blaze.

An 11" diam. Fir bears S. 88° W. for 17.0' to center of tree mkd. "X BT" on double blaze.

AT: 15

FROM WHICH: An 11" diam. Fir bears N. 2° W. for 16.7' to center of tree mkd. "X BT" on double blaze.

A 12" diam. Ponderosa Pine bears S. 32° W. for 10.8' to center of tree mkd "X BT" on double blaze.

AT: 16

FROM WHICH: A 19" diam. Ponderosa Pine bears S. 67° E. for 2.8' to center of tree mkd. "X BT" on double blaze.

An 11" diam. Ponderosa Pine bears S. 63° W. for 7.6' to center of tree mkd. "X BT" on double blaze.

# Edwards Surveying & Land Planning Inc.

816 West 8th Street  
Medford, OR 97501  
Tel.: (503) 776-2313  
FAX: (503) 776-9978



223 SW "I" Street  
Grants Pass, OR 97526  
Tel.: (503) 471-7059  
FAX: (503) 471-7809

SURVEYING • ENGINEERING • PLANNING

14150

AT: 1

FROM WHICH: A 9" diam. Fir bears N. 10° E. for 14.7' to center of tree mkd. "X BT" on double blaze.

A 10" diam. Ponderosa Pine bears N. 64° W. for 15.2' to center of tree mkd. "X BT" on double blaze.

AT: 2

FROM WHICH: An 8" diam. Fir bears N. 36° E. for 9.8' to center of tree mkd. "X BT" on double blaze.

A 9" diam. Fir bears S. 78° E. for 14.4' to center of tree mkd. "X BT" on double blaze.

AT: 3

FROM WHICH: A 16" diam. Fir bears N. 52° E. for 28.1' to center of tree mkd. "X BT" on double blaze.

A 10" diam. Cedar bears S. 16° W. for 18.8' to center of tree mkd. "X BT" on double blaze.

AT: 4

FROM WHICH: A 6" diam. Fir bears S. 43° E. for 5.9' to center of tree mkd. "X BT" on double blaze.

A 5" diam. Fir bears S. 41° W. for 9.7' to center of tree mkd. "X BT" on double blaze.

AT: 5

FROM WHICH: A 16" diam. Madrone bears N. 41° W. for 22.7' to center of tree mkd. "X BT" on double blaze.

A 34" diam. Cedar bears S. 79° E. for 14.0' to center of tree mkd. "X BT" on double blaze.

AT: 6

FROM WHICH: A 14" diam. Fir bears S. 73° W. for 10.6' to center of tree mkd. "X BT" on double blaze.

An 8" diam. Fir bears N. 60° E. for 7.8' to center of tree mkd. "X BT" on double blaze.

AT: 7

FROM WHICH: A 17" diam. Ponderosa Pine bears S. 55° E. for 19.7' to center of tree mkd. "X BT" on double blaze.

An 11" diam. Fir bears S. 54° W. for 10.8' to center of tree mkd. "X BT" on double blaze.

AT: 8

FROM WHICH: A 17" diam. Fir bears S. 71° E. for 4.5' to center of tree mkd. "X BT" on double blaze.

An 11" diam. Fir bears S. 28° E. for 16.1' to center of tree mkd. "X BT" on double blaze.

# Edwards Surveying & Land Planning Inc.

816 West 8th Street  
Medford, OR 97501  
Tel.: (503) 776-2313  
FAX: (503) 776-9978



223 SW "I" Street  
Grants Pass, OR 97526  
Tel.: (503) 471-7059  
FAX: (503) 471-7809

SURVEYING • ENGINEERING • PLANNING

SURVEY NUMBER 14150

SURVEY NARRATIVE TO COMPLY WITH CHAPTER 209, PARAGRAPH 250,  
OREGON REVISED STATUTES

SURVEY FOR: Boise Cascade Timber & Wood Products Group  
P.O. Box 100  
Medford, Oregon 97501

LOCATION: In Section 6, T. 33 S., R. 1 W., W.M. in Jackson  
County, Oregon.

PURPOSE: To locate and monument a portion of the right of  
way lines of Oregon State Highway Number 227.

PROCEDURE: After thoroughly researching the records of the  
Highway Dept. through local O.D.O.T. personnel it  
was determined that no right of way monuments  
existed. In 1983 O.D.O.T. crews tied to the NW  
and West 1/4 corners of Section 6 and coordinates  
for these corners are on the face of the 1984  
realignment survey map. Using these ties and our  
own ties to the same corners, as well as ties to  
the physical location of the travel surface, a  
rotation and translation was applied and an  
alignment computed. Monuments set on this survey  
consist of 5/8" x 24" steel pins with red plastic  
caps mkd. "D.A. EDWARDS-LS 2339". Bearing trees  
were marked as described following.

BASIS OF  
BEARINGS: Existing control per Survey Number 13594.

EQUIPMENT: Nikon DTM-A5 Electronic Total Station.

DATE  
COMPLETED: July 28, 1994.

BEARING TREES:

AT: 1/4 Section 6 and Section 31

FROM WHICH: An 11" diam. Fir bears N. 29° E. for 22.4' to  
center of tree mkd. "1/4 S31 BT" on single blaze.

A 30" diam. Ponderosa Pine bears S. 38° E. for  
35.3' to center of tree mkd. "1/4 S6 BT" on  
single blaze.

A 12" diam. Madrone bears S. 50° W. for 20.1' to  
center of tree mkd. "1/4 S6 BT" on single blaze.

A 40" diam. Ponderosa Pine bears N. 45° W. for  
11.1' to center of tree mkd. "1/4 S31 BT" on  
single blaze.